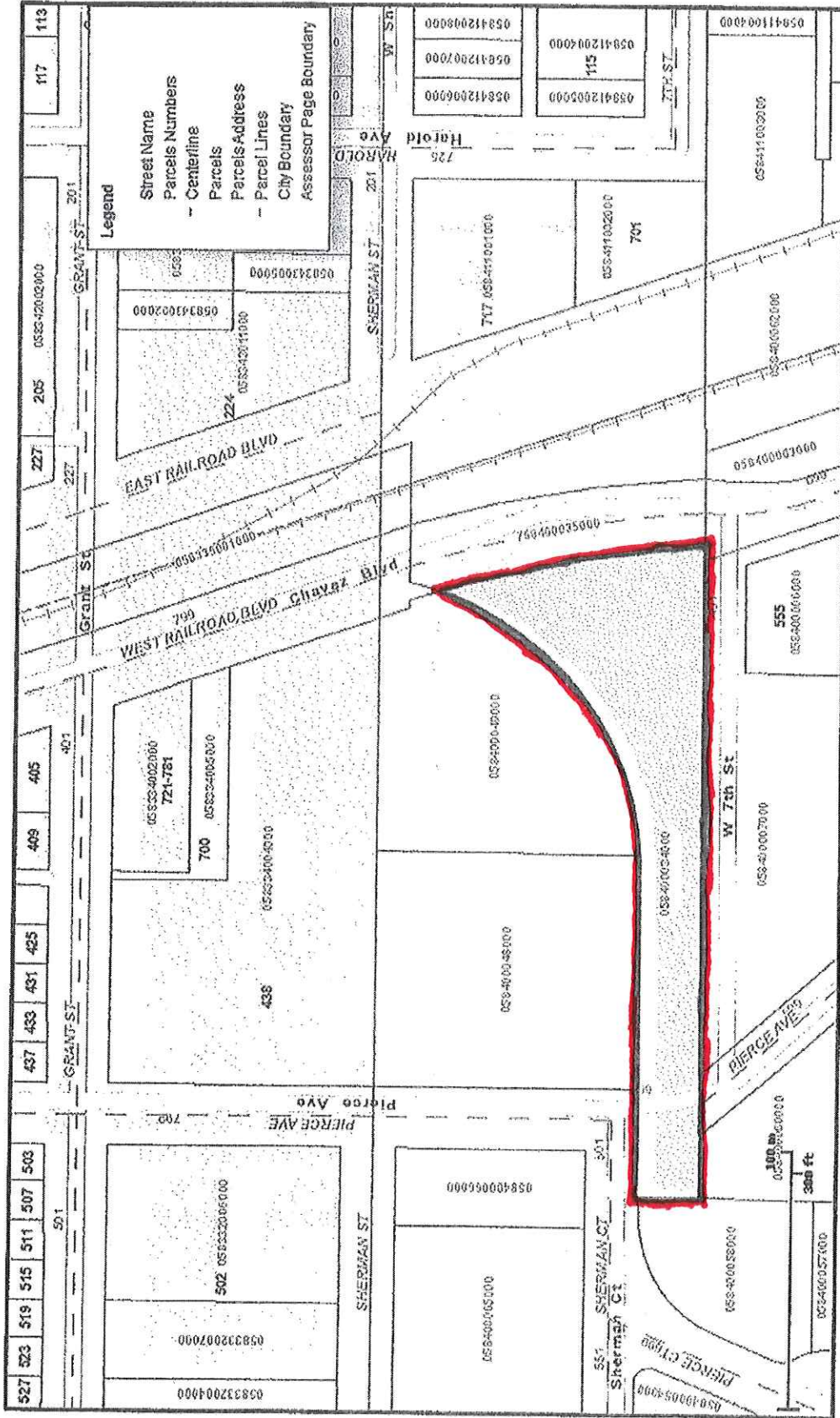

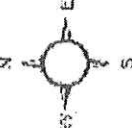


Site Map of Proposed Site 15- 701 Cesar Chavez Blvd. Showing Existing and Planned Structures







1" = 188 ft

Sub Title

03/25/2015

This map represents a visual display of related geographic information. Data provided hereon is not a guarantee of actual field conditions. To be sure of complete accuracy, please contact Imperial County staff for the most up-to-date information.