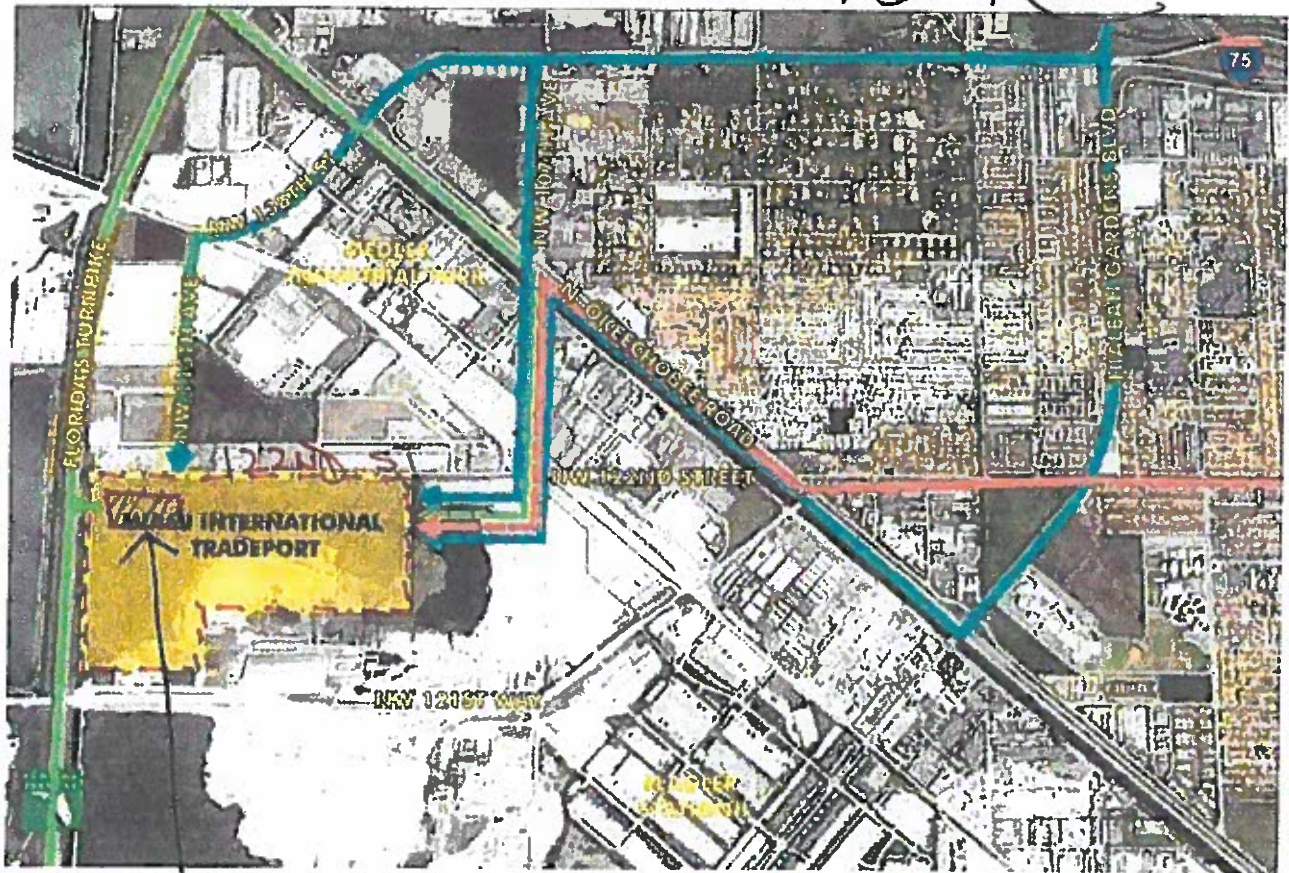




7-5-17 (S)



Conveniently located on the southeast corner of NW 115th Avenue and NW 122nd Street, Medley, FL, just east of the Florida Turnpike and south of Okeechobee Road. Close proximity to transportation hubs including Miami International Airport (MIA) (12 miles), Port of Miami (18 miles), Ft. Lauderdale International Airport (FLL) (28 miles) and Port Everglades (28 miles).

For leasing information contact:

Peter Sheridan

O 561.981.4860 M 954.439.4941

psheridan@libertyproperty.com

11440 NW. 122ND ST.
BUILDING "C"
SUITE # 600
MEDLEY, FL. 33178

↑
PROPERTY SITE
BOUNDARY STREETS!

MIAMI INTERNATIONAL TRADEPORT

11450 NW 122ND Street, Medley, FL

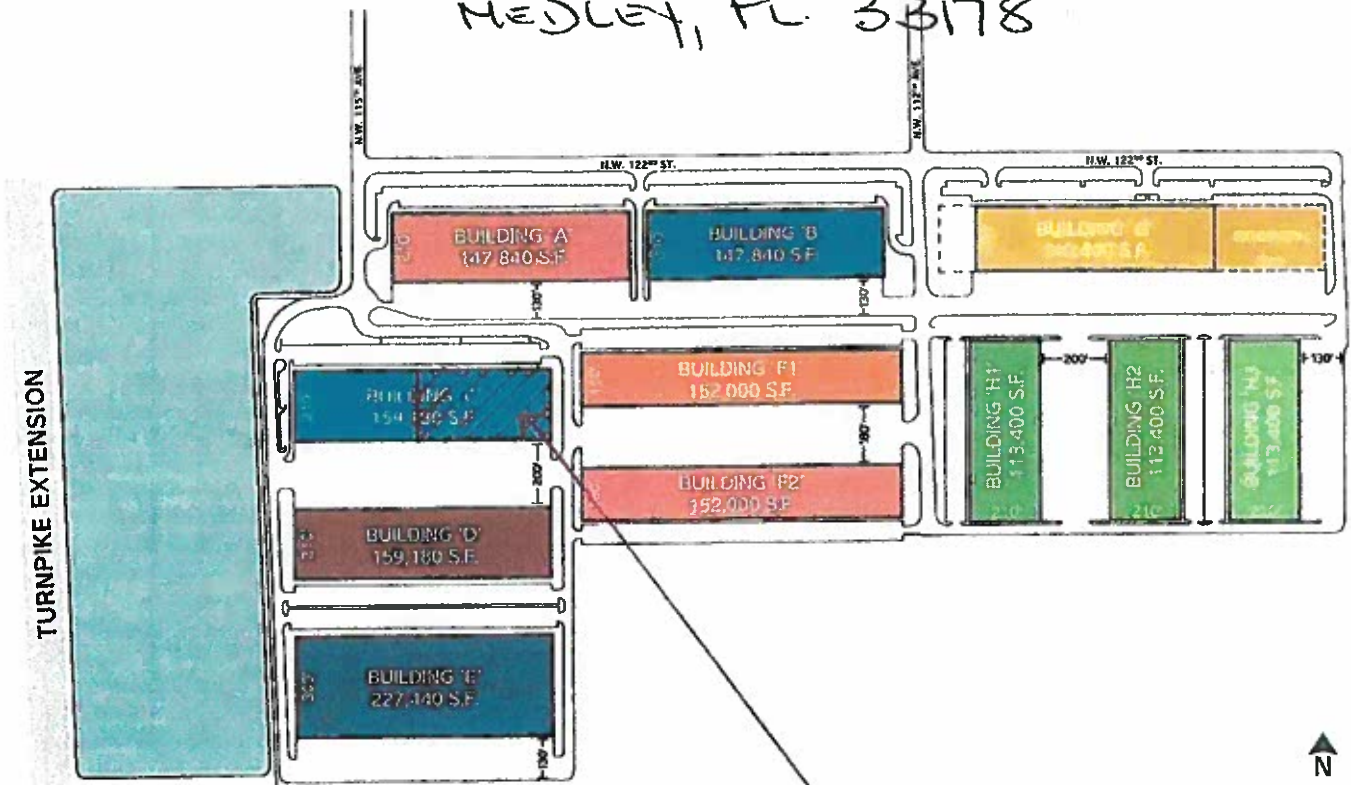
SITE PLAN

11440 N.W. 122ND ST.

BUILDING "C"

SUITE # 600

MEDLEY, FL 33178



FTZ APPLICATION
SPACE 79,590 ~~A~~

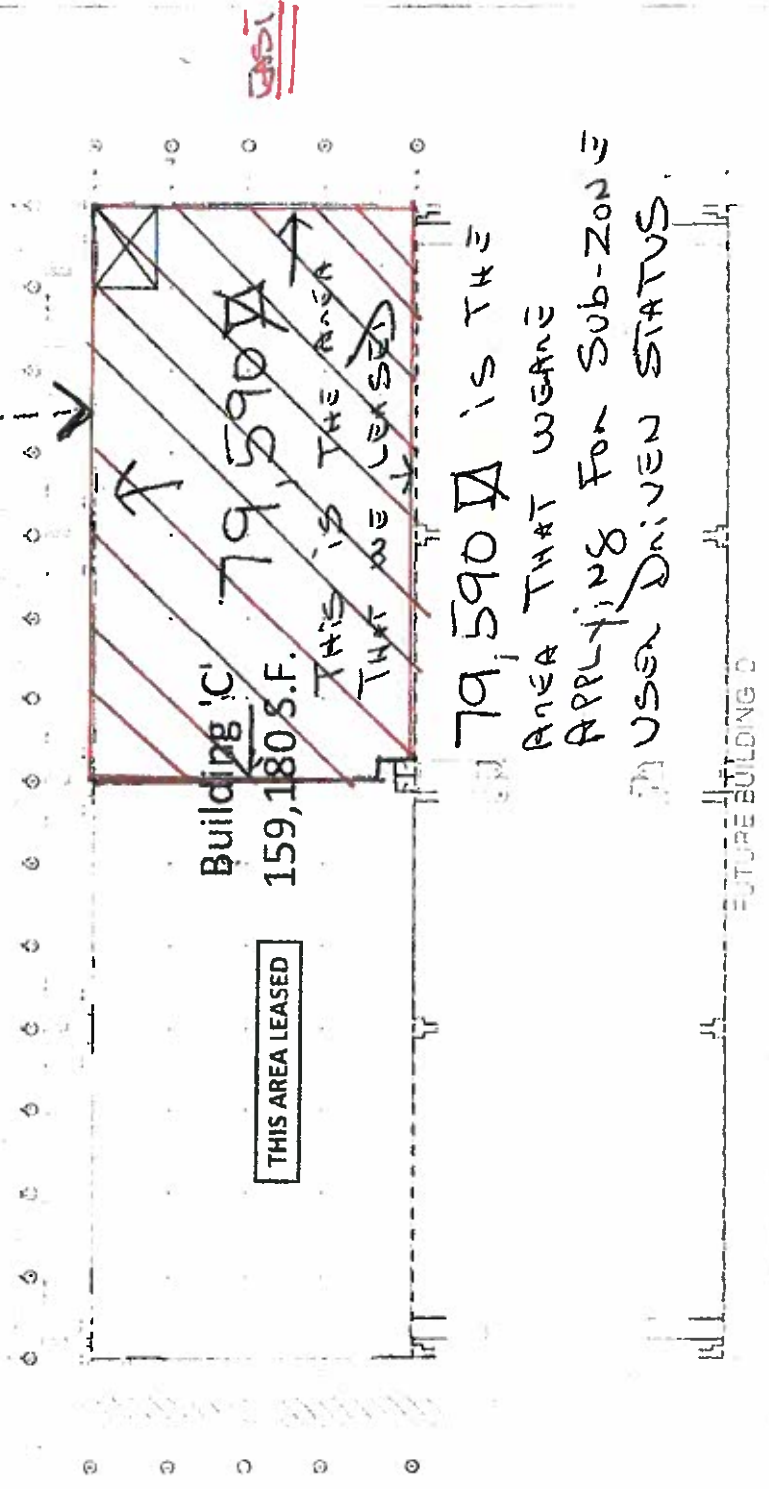
7-5-17 (SU)

NORTH

REVISED ON 7-5-17 by SANTIAGO ARAGON JR.

11440 N.W. 122ND ST.
BUILDING C, SUITE # 600
MEDLEY, FLORIDA. 33178

LIBERTY PROPERTY TRUST
LIBERTY TRUST



Building 'C'
159,180 S.F.

THIS AREA LEASED

THIS IS THE AREA
THAT WE LEASED

79,590 sq ft
AREA THAT WE ARE
APPLYING FOR SUB-ZONE
USER DRIVEN STATUS.

FUTURE BUILDING

SITE - FLOOR PLAN

1

BUILDING 'C'

MIAMI INTERNATIONAL TRADEPORT
BUILDING 'C'
12.04.15
15082.21
PLC

SOUTH

REVISED ON 7-5-17 by SANTIAGO ANAGON, JR.

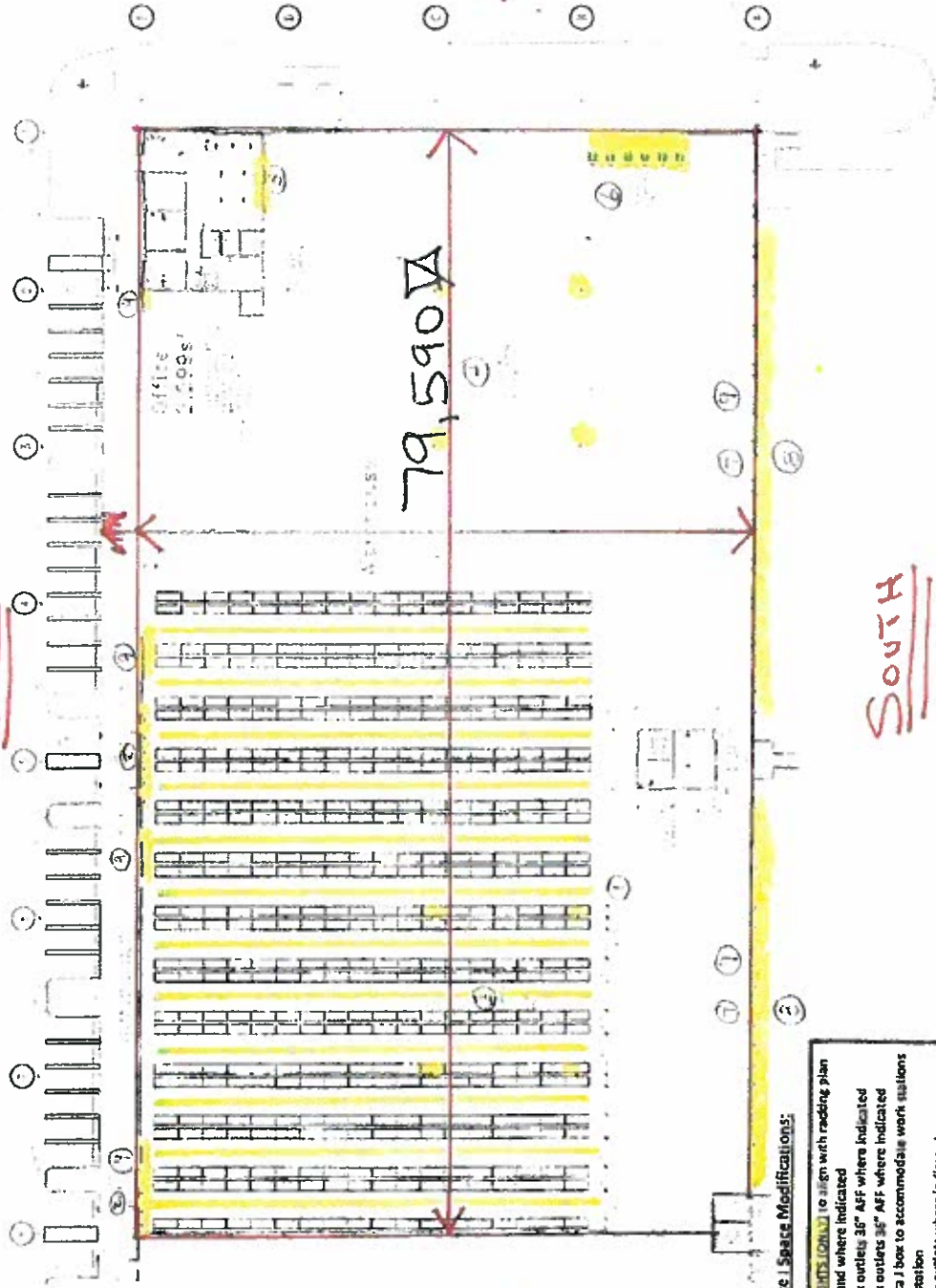
NORTH

WEST

EST

SOUTH

79,590A



Proposed Phase I Space Modifications:

1. Relocate EXISTING LIGHTS (shown in yellow) to align with racking plan
2. Add nine bollards as and where indicated
3. Add four 110 v duplex outlets 36" AFF where indicated
4. Add four 110 v duplex outlets 36" AFF where indicated
5. Add electrical and data J box to accommodate work stations
6. Add forklift charging station
7. Add eight 110v duplex outlets where indicated
8. Add 22 edge of docks, one at each overhead door
9. Install translucent film on all windows in warehouse, including vision panels on overhead doors

FTZ APPLICATION WILL BE FOR
79,590A SQ. FT.