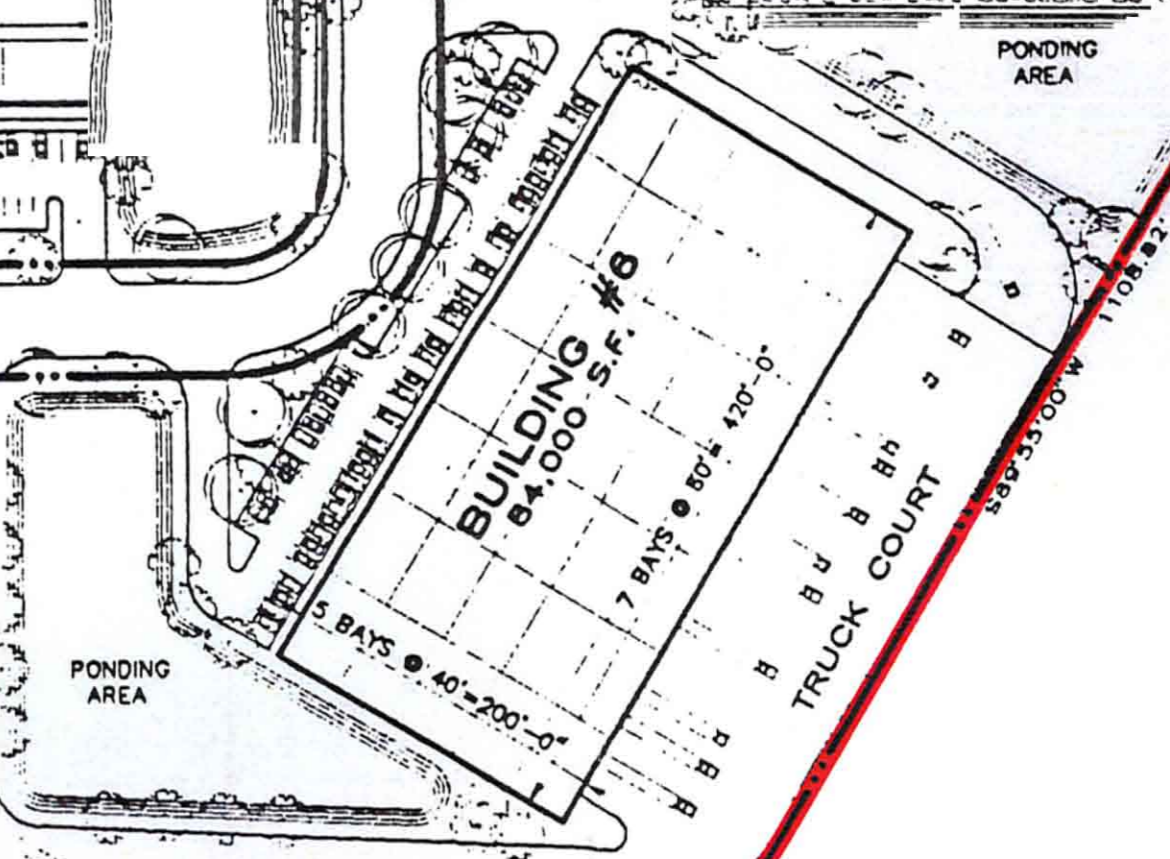
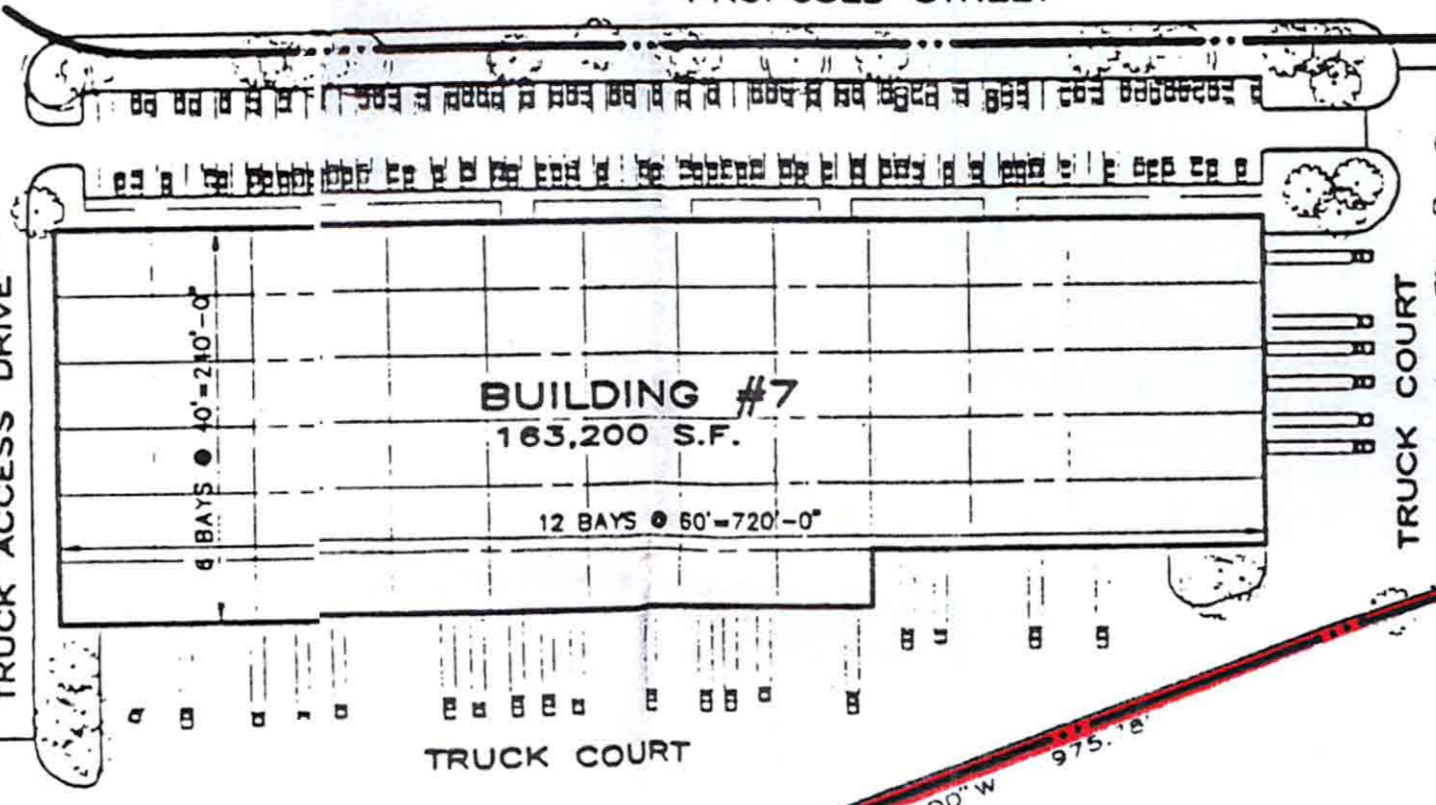
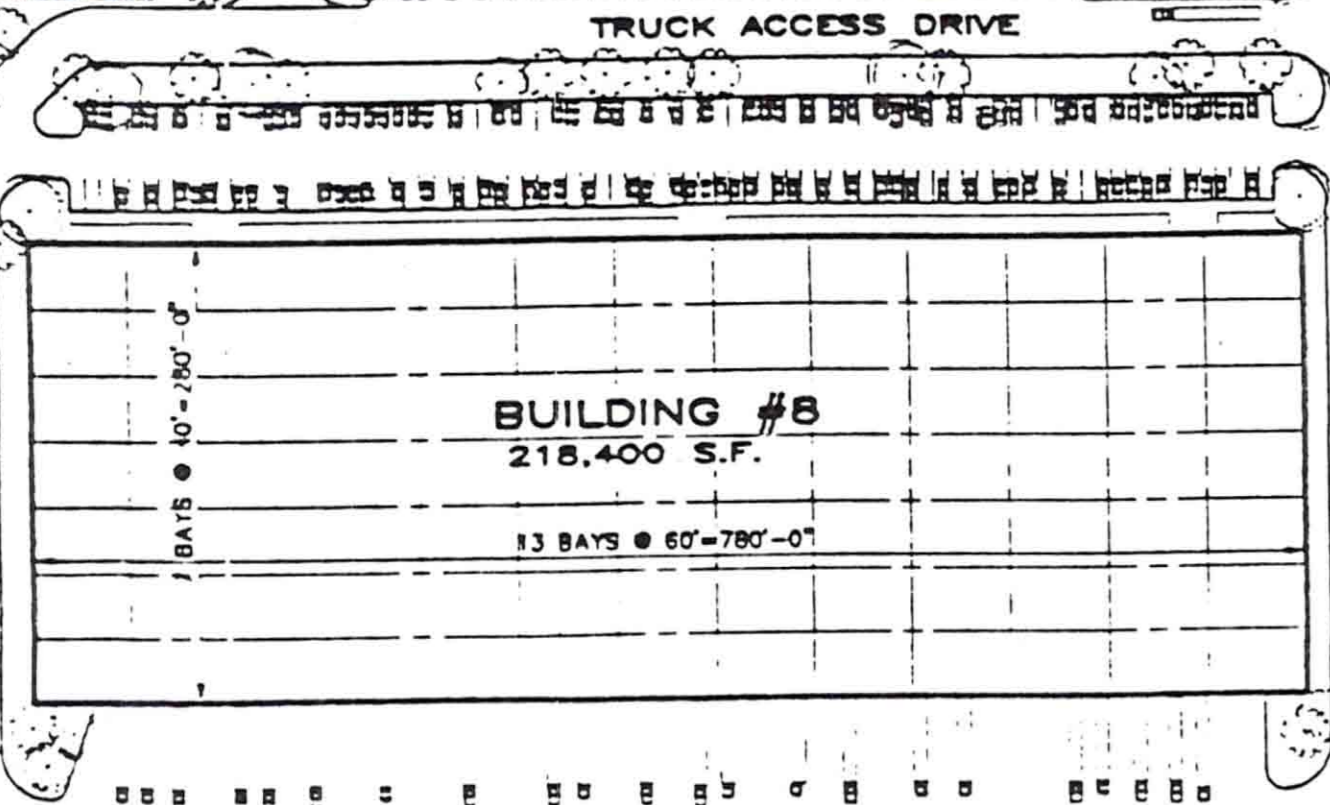
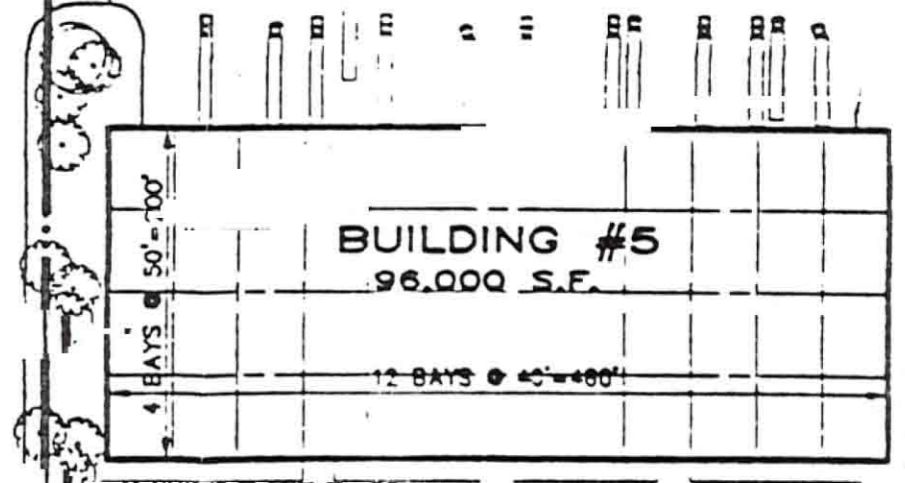
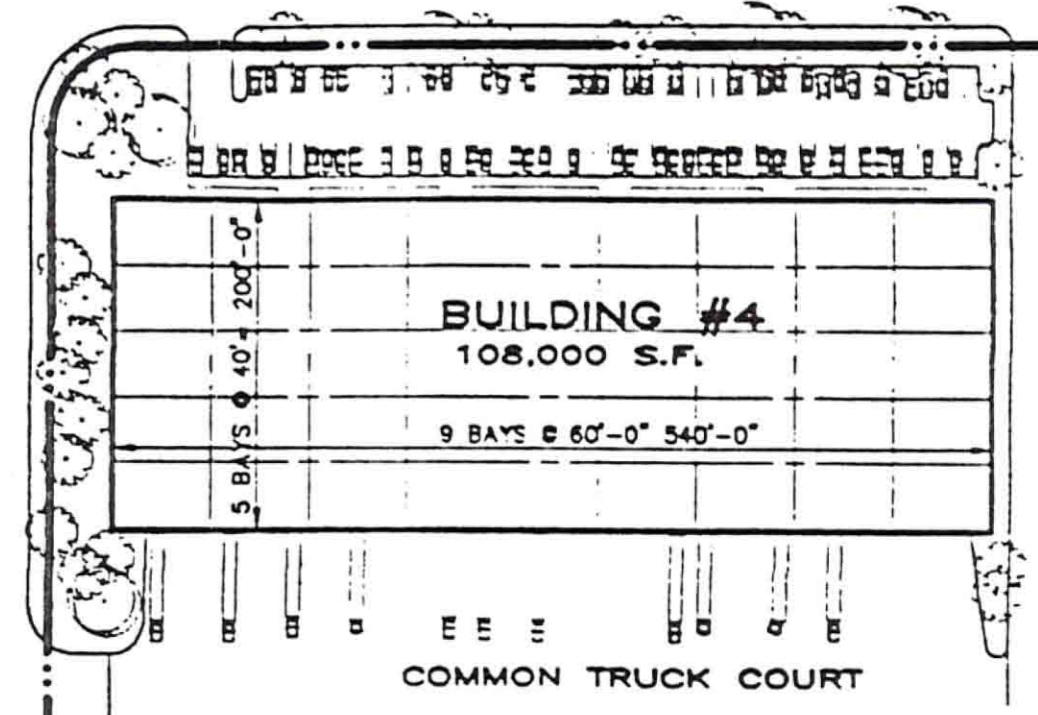
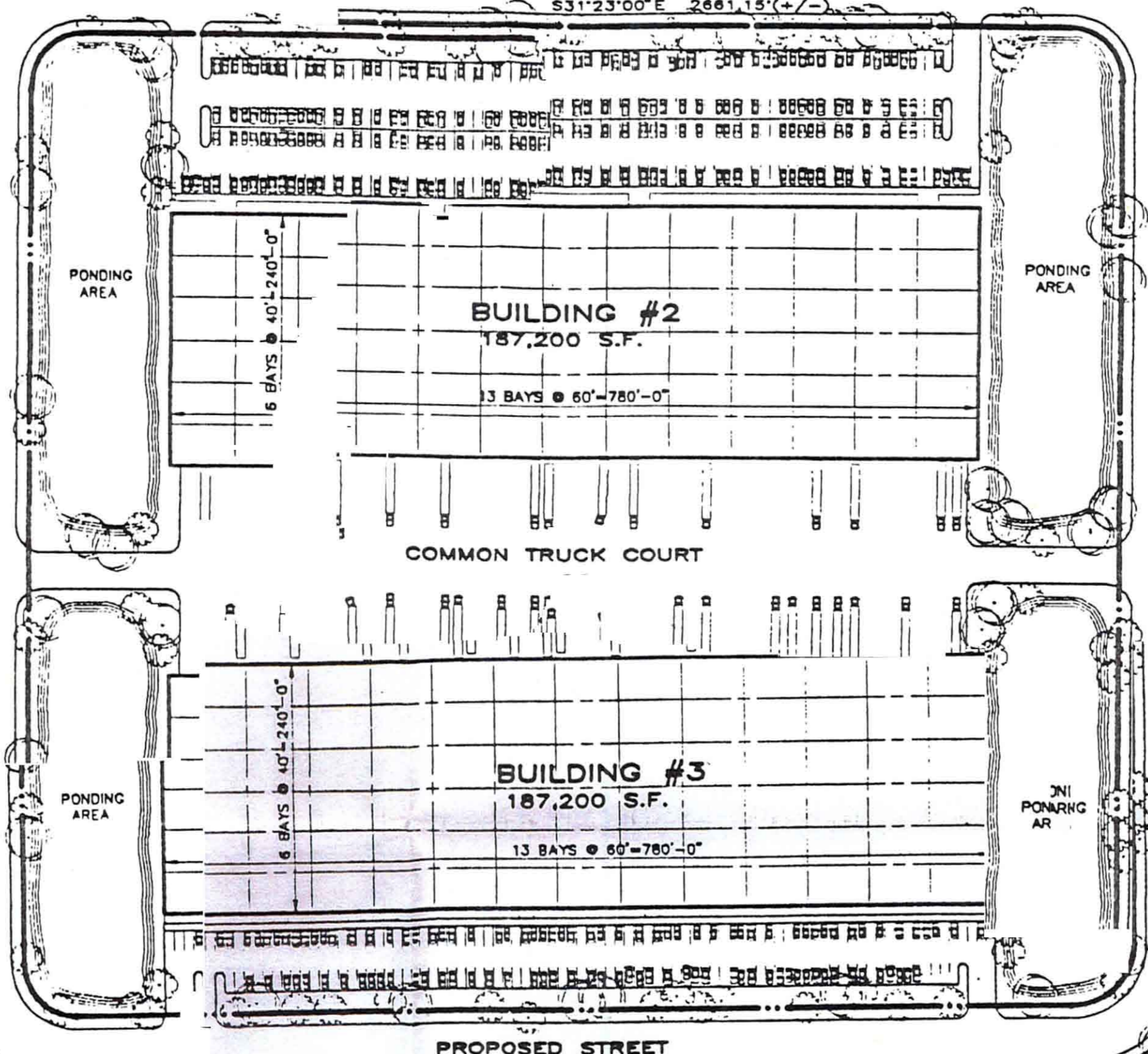
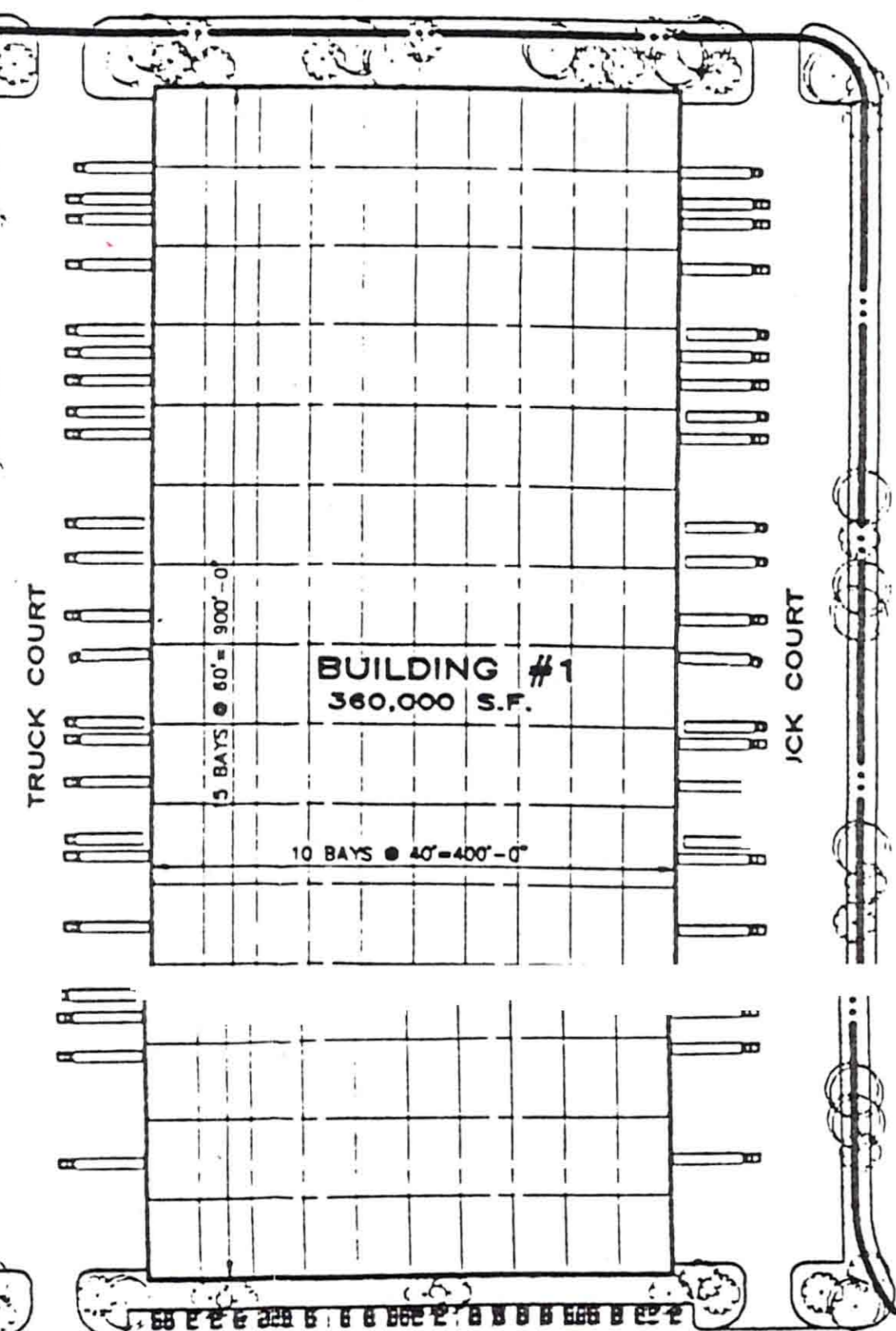


ALDERETE ROAD

S31°23'00"E 2661.15'(+/-)

C-3
FUTURE
COMMERCIAL SITE



S47°38'00"W 511.07'

N62°16'00"E 1398.90'

PONDING AREA

TRUCK COURT

TRUCK COURT

PONDING AREA

PONDING AREA

COMMON TRUCK COURT

COMMON TRUCK COURT

PROPOSED STREET

TRUCK ACCESS DRIVE

TRUCK ACCESS DRIVE

TRUCK ACCESS DRIVE

TRUCK COURT

TRUCK COURT

PONDING AREA

PONDING AREA

PONDING AREA

TRUCK COURT

TRUCK COURT

PONDING AREA

N27°03'30"W 1180.15'(+/-)

N28°38'00"W 396.90'

N51°26'00"W 975.18'

