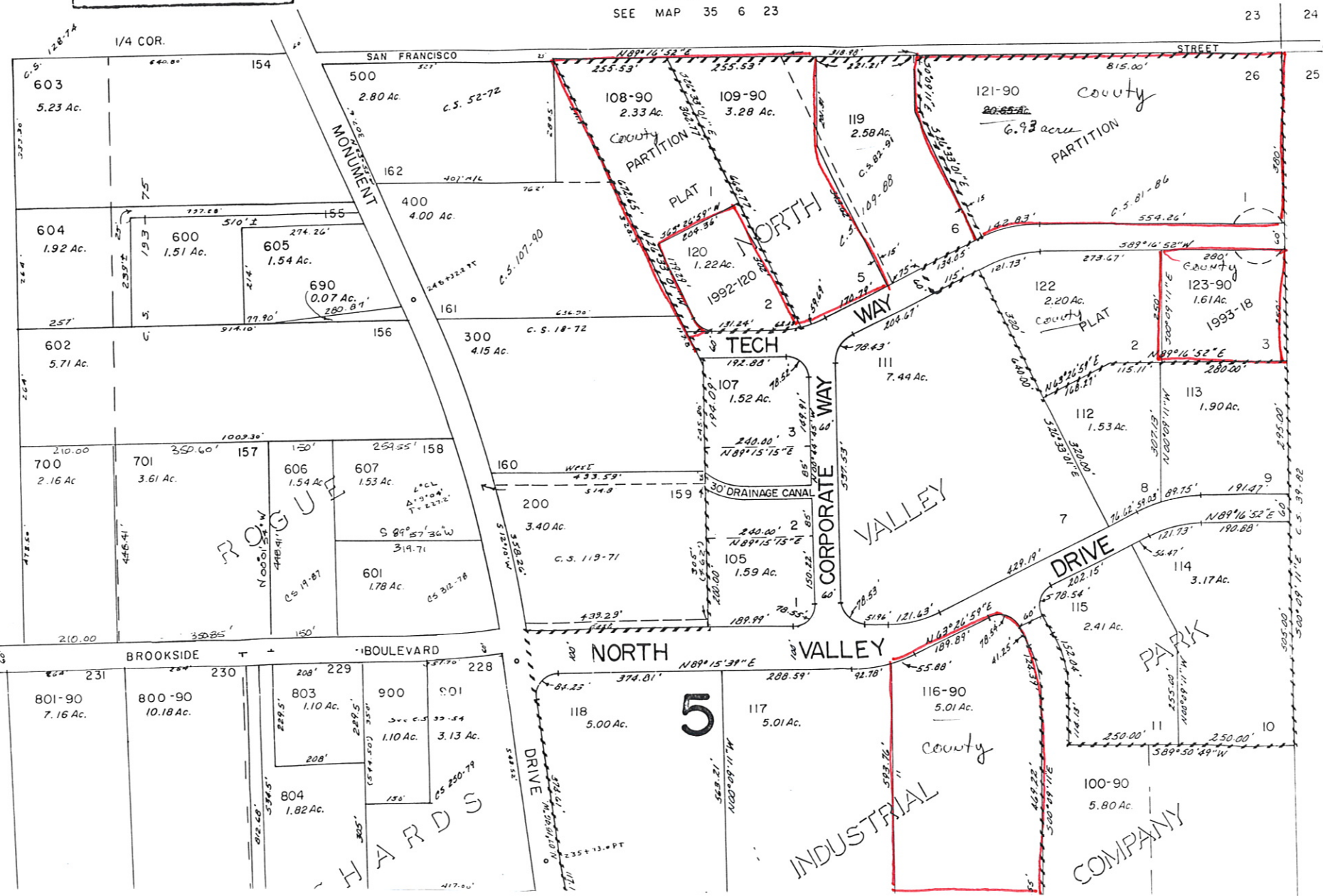


NE1/4 SEC. 26 T.35S. R.6W. W.M.
JOSEPHINE COUNTY

This map was prepared for
assessment purpose only.

1" = 200'
SEE MAP 35 6 23



CANCELLED T.L.
 106-90
 190-90
 191-90
 192
 110-90
 193-90
 801-40

SEE MAP 35 6 25B