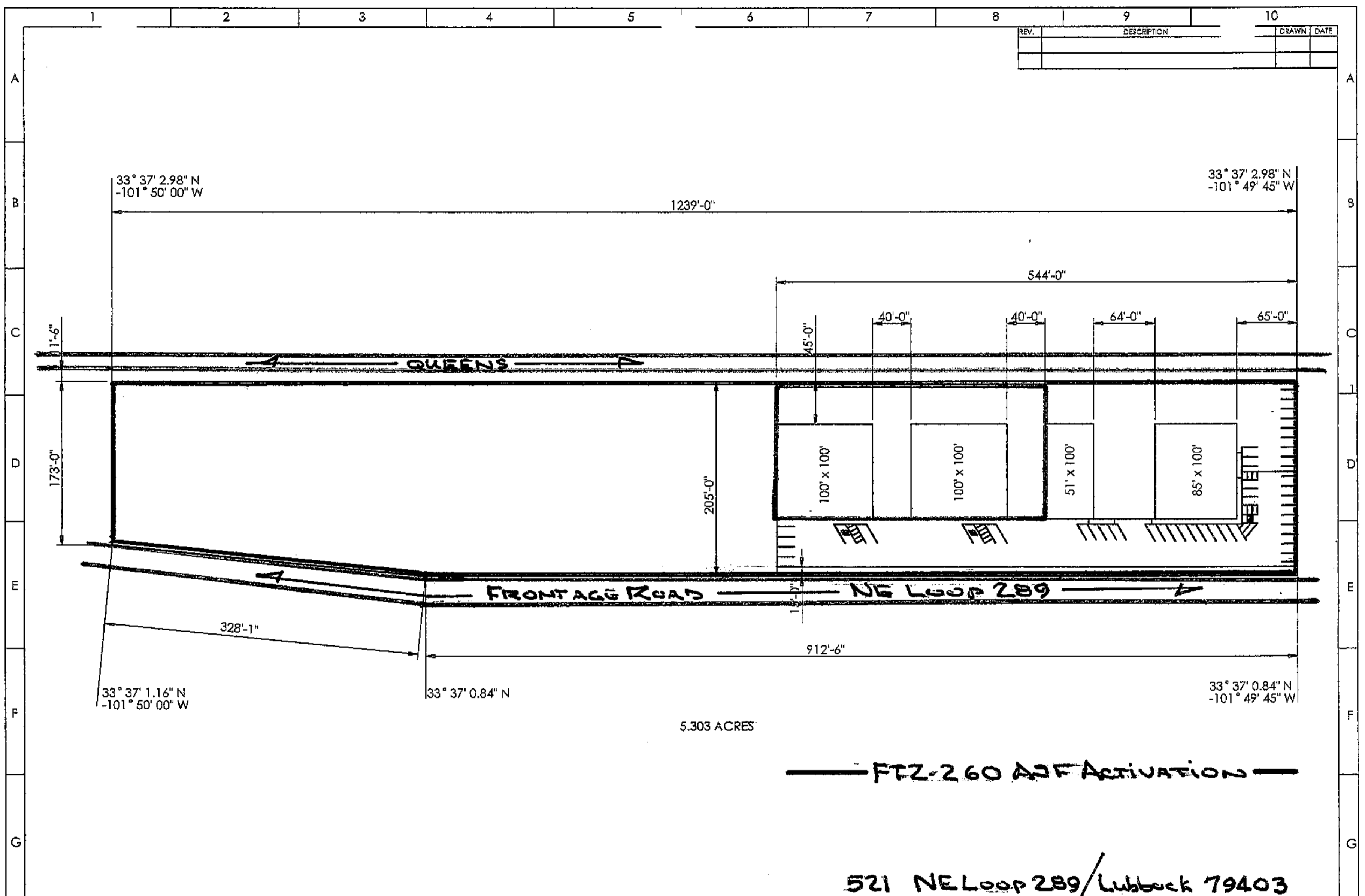


REV.	DESCRIPTION	DRAWN	DATE

5.303 ACRES

NOTES:	THIS DRAWING IS THE PROPERTY OF J&B INDUSTRIAL SERVICES LUBBOCK, TEXAS, USA AND SHALL NOT BE USED FOR ANY PURPOSE EXCEPT FOR THE MANUFACTURE OF ARTICLES FOR J&B INDUSTRIAL SERVICES EXCEPT UPON WRITTEN PERMISSION FROM J&B INDUSTRIAL SERVICES. DRAWINGS AND ALL COPIES ARE TO BE DESTROYED UPON REQUEST.	TOLERANCES UNLESS OTHERWISE SPECIFIED DIMENSIONS ARE IN INCHES. MACHINED SURFACES ARE TO BE 125 UNLESS OTHERWISE SPECIFIED.	DATE	
	FRACTIONAL ± 1/32 ANGULAR: ± 0.5° .X ± 0.06 .XXX ± 0.005 .XX ± 0.03 .XXXX ± 0.0005	NAME	CO. NAME: J&B INDUSTRIAL SERVICES	
	DO NOT SCALE DRAWING	APPR.:	PART DESC.:	BUILDING PLAT
			PROCESS:	BUILDING PLAT
				SHEET 1 OF 1

REV.	DESCRIPTION	DRAWN	DATE



FTZ-260 A2F Activation

521 NE Loop 289 / Lubbock 79403

NOTES:	THIS DRAWING IS THE PROPERTY OF J&B INDUSTRIAL SERVICES LUBBOCK, TEXAS, USA AND SHALL NOT BE USED FOR ANY PURPOSE EXCEPT FOR THE MANUFACTURE OF ARTICLES FOR J&B INDUSTRIAL SERVICES EXCEPT UPON WRITTEN PERMISSION FROM J&B INDUSTRIAL SERVICES. DRAWINGS AND ALL COPIES ARE TO BE DESTROYED UPON REQUEST.	TOLERANCES UNLESS OTHERWISE SPECIFIED DIMENSIONS ARE IN INCHES. MACHINED SURFACES ARE TO BE 125 UNLESS OTHERWISE SPECIFIED.	LAST DATUM LETTER USED:	NAME	DATE	JB Industrial Services <small>A CABINET SPECIALIST COMPANY LUBBOCK, TEXAS</small>	
		FRACTIONAL: ± 1/32	DRAWN:	JLR	3/25/09		COO. NAME: J&B INDUSTRIAL SERVICES
		ANGULAR: ± 0.5°	APPR.:				PART DESC: BUILDING PLAT
		.X ± 0.06 .XXX ± 0.005 .XX ± 0.03 .XXXX ± 0.0005	MATERIAL:				PROGESS: BUILDING PLAT
			DO NOT SCALE DRAWING		PART NO. BUILDING PLAT	SHEET 1 OF 1	