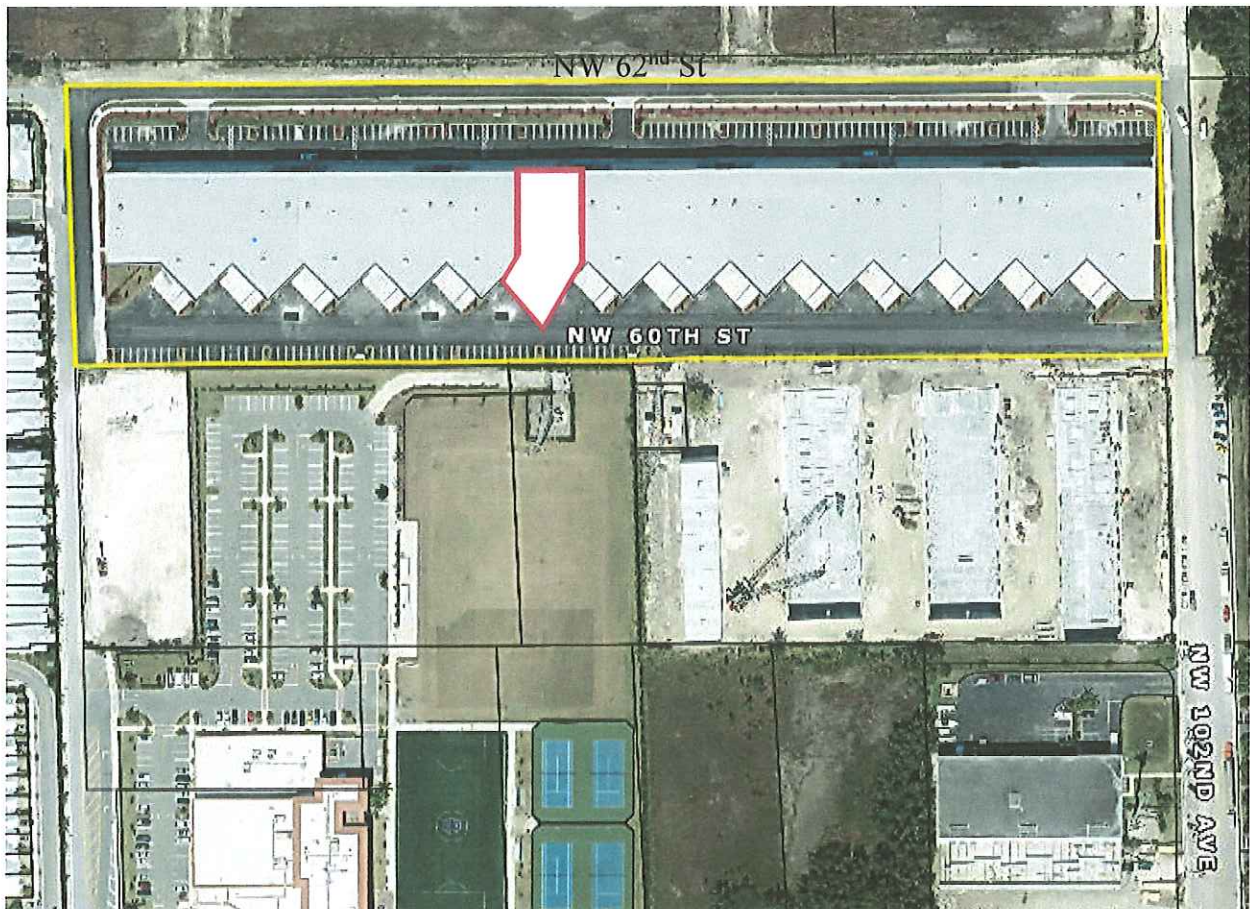


ATTACHMENTS

Attach the documents listed below (Items 10 and 11, plus Item 12 if applicable) directly behind the text of your request.

10. A clear and detailed site map showing existing and planned structures. The site boundaries must be outlined clearly **in red**. Note that if streets or similar landmarks are not legible on the site map, you will also need to provide a detailed street map with the proposed site's boundaries **in red**. Any map should be no larger than letter-sized (8 1/2" x 11") and clearly labeled, with legends provided for any markings.



11. Comments from U.S. Customs and Border Protection (CBP): The grantee generally should provide comments from CBP with the submitted request. Alternatively, the grantee may provide a copy of the request to CBP at the time the request is submitted to the FTZ Board, in which case the grantee should also communicate with CBP regarding the 20-day timeframe in the FTZ Board's regulations for CBP to provide comments to the FTZ Board.

(Submitted by Grantee)