

CLAYCO
THE ART & SCIENCE OF BUILDING

#1 TRANSAM PLAZA DRIVE, SUITE 400
CAMBRIDGE TERRACE, IL 60181
Ph 877.282.5998 Fx 630.282.5665

FORUM
THE ART & SCIENCE OF BUILDING

11111 W. 15TH AVENUE, SUITE 100
DENVER, CO 80202
Ph 303.733.1111 Fx 303.733.1111

Client: **STOCK AND ASSOCIATES**
Architect: **PERKINS+WILL**
Mechanical Engineer: **ALJIBR ALJIBR**
Electrical Engineer: **ALJIBR ALJIBR**
Structural Engineer: **ALJIBR ALJIBR**
Landscape Architect: **FORUM**

PROJECT:
MIDWEST COMMERCE CENTER
JOHNSON COUNTY, KANSAS

USA and Global Company

USA

111328

DATE: 11.13.08

PROJECT: MIDWEST COMMERCE CENTER

SCALE: AS SHOWN

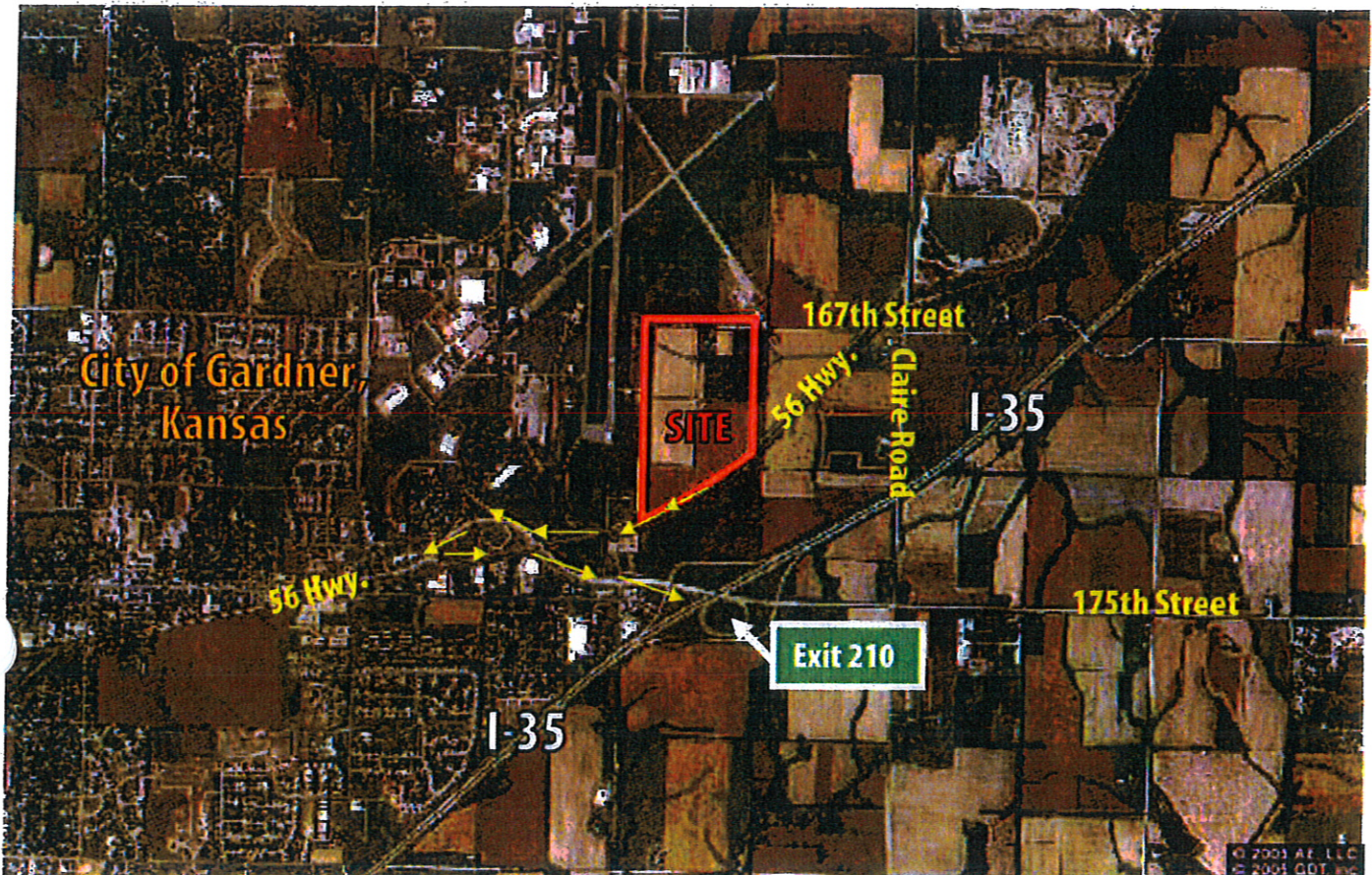
DATE: 11.13.08

A1-01

OVERALL SITE PLAN

Interstate Access Map

MIDWEST
COMMERCE CENTER
GARDNER, KANSAS



Distance from Midwest Commerce Center to:

- | | |
|-----------------------------------|------------------|
| 1. Interstate 35 Interchange #210 | 2 Miles |
| 2. Interstate 35 On Ramp North | 2 3/8 Miles |
| 3. Interstate 35 On Ramp South | 2 Miles |
| 4. US Highway 56 | 0 Miles (Fronts) |
| 5. Paved South Clair Road | < 1/8 Mile |