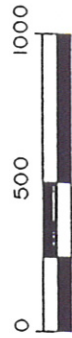


CLIENT: WISCONSIN BUREAU OF AERONAUTICS

# SURVEY PLAT

GRID NORTH, WISCONSIN  
STATE PLANE COORDINATE  
SYSTEM, SOUTH ZONE  
1983 DATUM

N



## LEGEND

- ⊙ 3/4" REBAR FOUND
- ⊙ 3/4" IRON PIPE FOUND
- ⊙ 3/4" REBAR FOUND
- ⊙ 3/4" REBAR SET
- ⊕ ALUMINUM MONUMENT FOUND
- ( ) PREVIOUSLY RECORDED AS

**FEE ACQUISITION**  
4,965,668 SQ. FT.  
113.996 ACRES

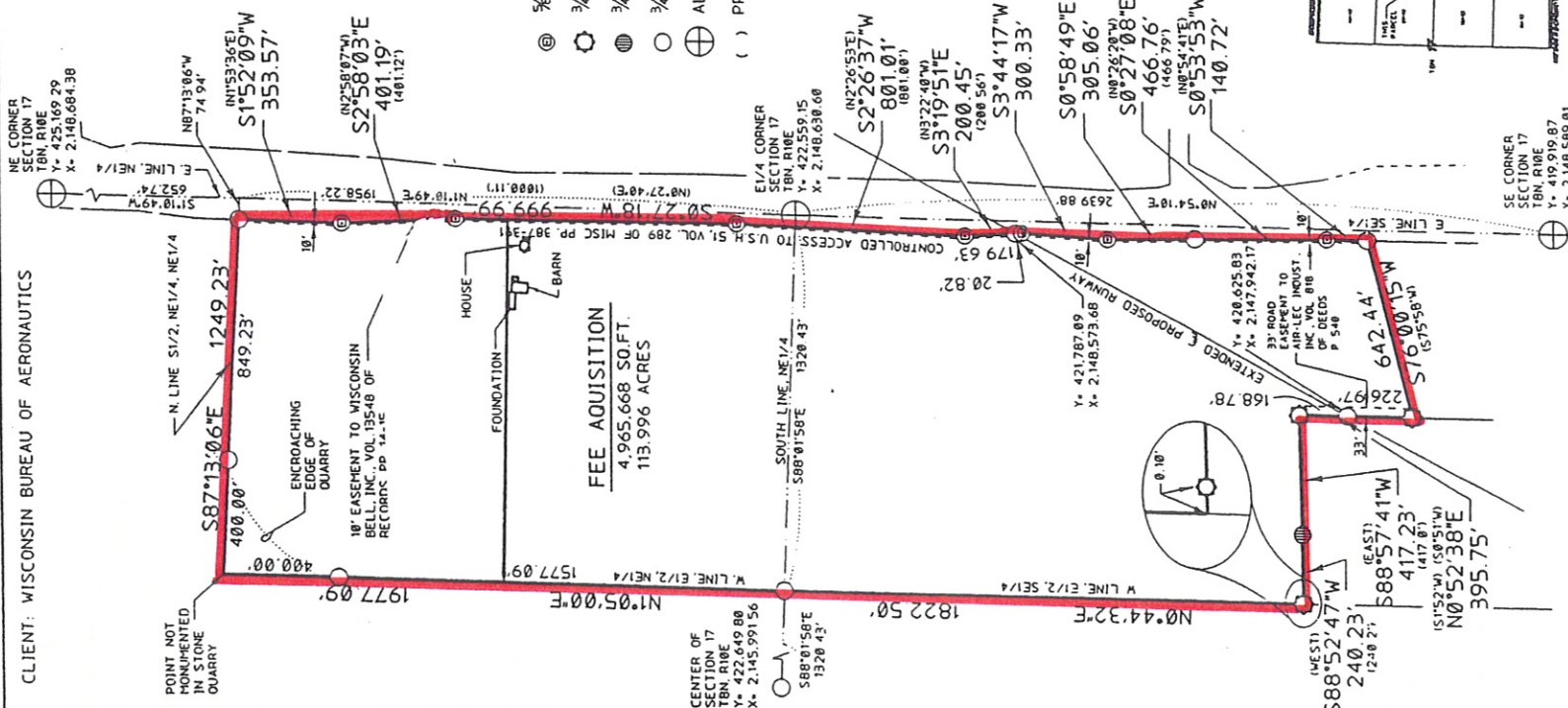
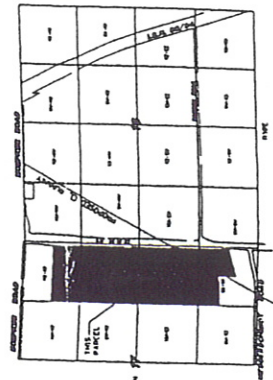
CENTER OF SECTION 17  
T8N, R18E  
Y. 422,649.80  
X. 2,145,991.56

SOUTH LINE, NE1/4  
S88°01'50"E 1320.43'

E1/4 CORNER SECTION 17  
T8N, R18E  
Y. 422,559.15  
X. 2,148,638.68

ROSS A. MICHAELS  
S-1696  
MADISON  
WI  
LAND SURVEYOR  
*Ross A. Michaels*  
7/16/96

## LOCATION MAP



**MEAD & HUNT**  
Engineers - Surveyors  
Madison, Wisconsin  
Tele: 16081-273-6380  
FAX: 16081-273-6380

Dwg. No. N 9119 S  
Sheet 1 of 2  
Job No. W99-965