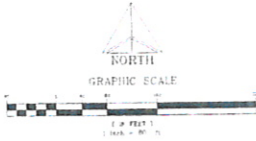
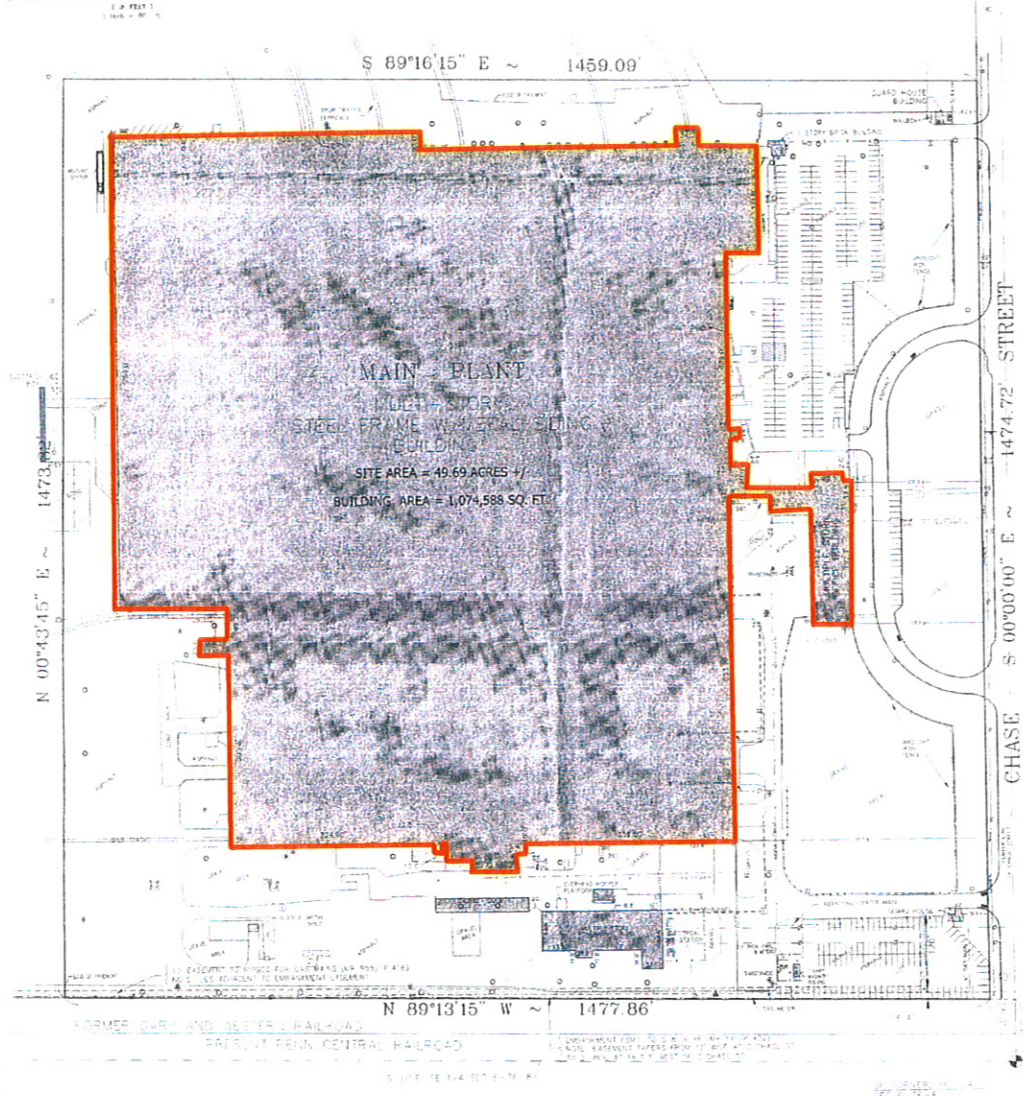


ALTA/ACSM LAND TITLE SURVEY

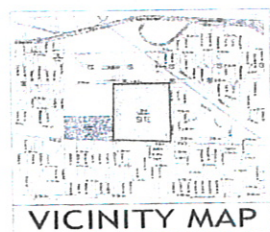


Legal Description:
 Part of the Southeast Quarter of Section 6, Township 36 North, Range 8 West, more particularly described as follows: Commencing at the Southeast corner of said Section 6; thence South 60°00'00" East along the center line of Chase Street, a distance of 101.0 feet; thence North 80°13'15" West along the North Right-of-Way line of the Penn Central Railroad (formerly the Gary and Western Railroad), a distance of 49 feet to the point of beginning; thence continuing along said line, a distance of 1,477.86 feet; thence North 00°43'45" East, a distance of 1,473.72 feet; thence South 00°16'15" East, a distance of 1,459.09 feet; thence South 00°00'00" East along the West Right-of-Way line of Chase Street, a distance of 1,474.72 feet to the point of beginning, containing 49.69 Acres, more or less, all in the City of Gary, Lake County, Indiana.



MAIN PLANT
 UNIT - STORE
 STEEL FRAME W/ METAL BUILDING
 BUILDING
 SITE AREA = 49.69 ACRES +/-
 BUILDING AREA = 1,074,588 SQ. FT.

LAND AREA SURVEYED = 2,164,469.72 Sq. Ft. / 49.689 Acres



LEGEND:

| | | | |
|-----|--------------------|---|--------------------|
| 2 | POWER POLE | ○ | OPEN GRATE MANHOLE |
| 4 | POWER POLE - 4000V | ○ | CATION BUSHING |
| 6 | LIGHT POLE | ■ | CURB ORA |
| 8 | WATER MOUNT | ■ | CHALK |
| 12 | PIPE - 4" DIA | ■ | MANHOLE |
| 14 | PIPE - 6" DIA | ■ | STEEL BOLLARD |
| 16 | WATER DITCH | ■ | SET-HIGH MARK |
| 18 | STEEL PIPE | ○ | 3" BENCH |
| 20 | STEEL PIPE | ○ | 4" BENCH |
| 22 | STEEL PIPE | ○ | 6" BENCH |
| 24 | STEEL PIPE | ○ | 8" BENCH |
| 26 | STEEL PIPE | ○ | 10" BENCH |
| 28 | STEEL PIPE | ○ | 12" BENCH |
| 30 | STEEL PIPE | ○ | 14" BENCH |
| 32 | STEEL PIPE | ○ | 16" BENCH |
| 34 | STEEL PIPE | ○ | 18" BENCH |
| 36 | STEEL PIPE | ○ | 20" BENCH |
| 38 | STEEL PIPE | ○ | 22" BENCH |
| 40 | STEEL PIPE | ○ | 24" BENCH |
| 42 | STEEL PIPE | ○ | 26" BENCH |
| 44 | STEEL PIPE | ○ | 28" BENCH |
| 46 | STEEL PIPE | ○ | 30" BENCH |
| 48 | STEEL PIPE | ○ | 32" BENCH |
| 50 | STEEL PIPE | ○ | 34" BENCH |
| 52 | STEEL PIPE | ○ | 36" BENCH |
| 54 | STEEL PIPE | ○ | 38" BENCH |
| 56 | STEEL PIPE | ○ | 40" BENCH |
| 58 | STEEL PIPE | ○ | 42" BENCH |
| 60 | STEEL PIPE | ○ | 44" BENCH |
| 62 | STEEL PIPE | ○ | 46" BENCH |
| 64 | STEEL PIPE | ○ | 48" BENCH |
| 66 | STEEL PIPE | ○ | 50" BENCH |
| 68 | STEEL PIPE | ○ | 52" BENCH |
| 70 | STEEL PIPE | ○ | 54" BENCH |
| 72 | STEEL PIPE | ○ | 56" BENCH |
| 74 | STEEL PIPE | ○ | 58" BENCH |
| 76 | STEEL PIPE | ○ | 60" BENCH |
| 78 | STEEL PIPE | ○ | 62" BENCH |
| 80 | STEEL PIPE | ○ | 64" BENCH |
| 82 | STEEL PIPE | ○ | 66" BENCH |
| 84 | STEEL PIPE | ○ | 68" BENCH |
| 86 | STEEL PIPE | ○ | 70" BENCH |
| 88 | STEEL PIPE | ○ | 72" BENCH |
| 90 | STEEL PIPE | ○ | 74" BENCH |
| 92 | STEEL PIPE | ○ | 76" BENCH |
| 94 | STEEL PIPE | ○ | 78" BENCH |
| 96 | STEEL PIPE | ○ | 80" BENCH |
| 98 | STEEL PIPE | ○ | 82" BENCH |
| 100 | STEEL PIPE | ○ | 84" BENCH |
| 102 | STEEL PIPE | ○ | 86" BENCH |
| 104 | STEEL PIPE | ○ | 88" BENCH |
| 106 | STEEL PIPE | ○ | 90" BENCH |
| 108 | STEEL PIPE | ○ | 92" BENCH |
| 110 | STEEL PIPE | ○ | 94" BENCH |
| 112 | STEEL PIPE | ○ | 96" BENCH |
| 114 | STEEL PIPE | ○ | 98" BENCH |
| 116 | STEEL PIPE | ○ | 100" BENCH |
| 118 | STEEL PIPE | ○ | 102" BENCH |
| 120 | STEEL PIPE | ○ | 104" BENCH |
| 122 | STEEL PIPE | ○ | 106" BENCH |
| 124 | STEEL PIPE | ○ | 108" BENCH |
| 126 | STEEL PIPE | ○ | 110" BENCH |
| 128 | STEEL PIPE | ○ | 112" BENCH |
| 130 | STEEL PIPE | ○ | 114" BENCH |
| 132 | STEEL PIPE | ○ | 116" BENCH |
| 134 | STEEL PIPE | ○ | 118" BENCH |
| 136 | STEEL PIPE | ○ | 120" BENCH |
| 138 | STEEL PIPE | ○ | 122" BENCH |
| 140 | STEEL PIPE | ○ | 124" BENCH |
| 142 | STEEL PIPE | ○ | 126" BENCH |
| 144 | STEEL PIPE | ○ | 128" BENCH |
| 146 | STEEL PIPE | ○ | 130" BENCH |
| 148 | STEEL PIPE | ○ | 132" BENCH |
| 150 | STEEL PIPE | ○ | 134" BENCH |
| 152 | STEEL PIPE | ○ | 136" BENCH |
| 154 | STEEL PIPE | ○ | 138" BENCH |
| 156 | STEEL PIPE | ○ | 140" BENCH |
| 158 | STEEL PIPE | ○ | 142" BENCH |
| 160 | STEEL PIPE | ○ | 144" BENCH |
| 162 | STEEL PIPE | ○ | 146" BENCH |
| 164 | STEEL PIPE | ○ | 148" BENCH |
| 166 | STEEL PIPE | ○ | 150" BENCH |
| 168 | STEEL PIPE | ○ | 152" BENCH |
| 170 | STEEL PIPE | ○ | 154" BENCH |
| 172 | STEEL PIPE | ○ | 156" BENCH |
| 174 | STEEL PIPE | ○ | 158" BENCH |
| 176 | STEEL PIPE | ○ | 160" BENCH |
| 178 | STEEL PIPE | ○ | 162" BENCH |
| 180 | STEEL PIPE | ○ | 164" BENCH |
| 182 | STEEL PIPE | ○ | 166" BENCH |
| 184 | STEEL PIPE | ○ | 168" BENCH |
| 186 | STEEL PIPE | ○ | 170" BENCH |
| 188 | STEEL PIPE | ○ | 172" BENCH |
| 190 | STEEL PIPE | ○ | 174" BENCH |
| 192 | STEEL PIPE | ○ | 176" BENCH |
| 194 | STEEL PIPE | ○ | 178" BENCH |
| 196 | STEEL PIPE | ○ | 180" BENCH |
| 198 | STEEL PIPE | ○ | 182" BENCH |
| 200 | STEEL PIPE | ○ | 184" BENCH |
| 202 | STEEL PIPE | ○ | 186" BENCH |
| 204 | STEEL PIPE | ○ | 188" BENCH |
| 206 | STEEL PIPE | ○ | 190" BENCH |
| 208 | STEEL PIPE | ○ | 192" BENCH |
| 210 | STEEL PIPE | ○ | 194" BENCH |
| 212 | STEEL PIPE | ○ | 196" BENCH |
| 214 | STEEL PIPE | ○ | 198" BENCH |
| 216 | STEEL PIPE | ○ | 200" BENCH |
| 218 | STEEL PIPE | ○ | 202" BENCH |
| 220 | STEEL PIPE | ○ | 204" BENCH |
| 222 | STEEL PIPE | ○ | 206" BENCH |
| 224 | STEEL PIPE | ○ | 208" BENCH |
| 226 | STEEL PIPE | ○ | 210" BENCH |
| 228 | STEEL PIPE | ○ | 212" BENCH |
| 230 | STEEL PIPE | ○ | 214" BENCH |
| 232 | STEEL PIPE | ○ | 216" BENCH |
| 234 | STEEL PIPE | ○ | 218" BENCH |
| 236 | STEEL PIPE | ○ | 220" BENCH |
| 238 | STEEL PIPE | ○ | 222" BENCH |
| 240 | STEEL PIPE | ○ | 224" BENCH |
| 242 | STEEL PIPE | ○ | 226" BENCH |
| 244 | STEEL PIPE | ○ | 228" BENCH |
| 246 | STEEL PIPE | ○ | 230" BENCH |
| 248 | STEEL PIPE | ○ | 232" BENCH |
| 250 | STEEL PIPE | ○ | 234" BENCH |
| 252 | STEEL PIPE | ○ | 236" BENCH |
| 254 | STEEL PIPE | ○ | 238" BENCH |
| 256 | STEEL PIPE | ○ | 240" BENCH |
| 258 | STEEL PIPE | ○ | 242" BENCH |
| 260 | STEEL PIPE | ○ | 244" BENCH |
| 262 | STEEL PIPE | ○ | 246" BENCH |
| 264 | STEEL PIPE | ○ | 248" BENCH |
| 266 | STEEL PIPE | ○ | 250" BENCH |
| 268 | STEEL PIPE | ○ | 252" BENCH |
| 270 | STEEL PIPE | ○ | 254" BENCH |
| 272 | STEEL PIPE | ○ | 256" BENCH |
| 274 | STEEL PIPE | ○ | 258" BENCH |
| 276 | STEEL PIPE | ○ | 260" BENCH |
| 278 | STEEL PIPE | ○ | 262" BENCH |
| 280 | STEEL PIPE | ○ | 264" BENCH |
| 282 | STEEL PIPE | ○ | 266" BENCH |
| 284 | STEEL PIPE | ○ | 268" BENCH |
| 286 | STEEL PIPE | ○ | 270" BENCH |
| 288 | STEEL PIPE | ○ | 272" BENCH |
| 290 | STEEL PIPE | ○ | 274" BENCH |
| 292 | STEEL PIPE | ○ | 276" BENCH |
| 294 | STEEL PIPE | ○ | 278" BENCH |
| 296 | STEEL PIPE | ○ | 280" BENCH |
| 298 | STEEL PIPE | ○ | 282" BENCH |
| 300 | STEEL PIPE | ○ | 284" BENCH |
| 302 | STEEL PIPE | ○ | 286" BENCH |
| 304 | STEEL PIPE | ○ | 288" BENCH |
| 306 | STEEL PIPE | ○ | 290" BENCH |
| 308 | STEEL PIPE | ○ | 292" BENCH |
| 310 | STEEL PIPE | ○ | 294" BENCH |
| 312 | STEEL PIPE | ○ | 296" BENCH |
| 314 | STEEL PIPE | ○ | 298" BENCH |
| 316 | STEEL PIPE | ○ | 300" BENCH |
| 318 | STEEL PIPE | ○ | 302" BENCH |
| 320 | STEEL PIPE | ○ | 304" BENCH |
| 322 | STEEL PIPE | ○ | 306" BENCH |
| 324 | STEEL PIPE | ○ | 308" BENCH |
| 326 | STEEL PIPE | ○ | 310" BENCH |
| 328 | STEEL PIPE | ○ | 312" BENCH |
| 330 | STEEL PIPE | ○ | 314" BENCH |
| 332 | STEEL PIPE | ○ | 316" BENCH |
| 334 | STEEL PIPE | ○ | 318" BENCH |
| 336 | STEEL PIPE | ○ | 320" BENCH |
| 338 | STEEL PIPE | ○ | 322" BENCH |
| 340 | STEEL PIPE | ○ | 324" BENCH |
| 342 | STEEL PIPE | ○ | 326" BENCH |
| 344 | STEEL PIPE | ○ | 328" BENCH |
| 346 | STEEL PIPE | ○ | 330" BENCH |
| 348 | STEEL PIPE | ○ | 332" BENCH |
| 350 | STEEL PIPE | ○ | 334" BENCH |
| 352 | STEEL PIPE | ○ | 336" BENCH |
| 354 | STEEL PIPE | ○ | 338" BENCH |
| 356 | STEEL PIPE | ○ | 340" BENCH |
| 358 | STEEL PIPE | ○ | 342" BENCH |
| 360 | STEEL PIPE | ○ | 344" BENCH |
| 362 | STEEL PIPE | ○ | 346" BENCH |
| 364 | STEEL PIPE | ○ | 348" BENCH |
| 366 | STEEL PIPE | ○ | 350" BENCH |
| 368 | STEEL PIPE | ○ | 352" BENCH |
| 370 | STEEL PIPE | ○ | 354" BENCH |
| 372 | STEEL PIPE | ○ | 356" BENCH |
| 374 | STEEL PIPE | ○ | 358" BENCH |
| 376 | STEEL PIPE | ○ | 360" BENCH |
| 378 | STEEL PIPE | ○ | 362" BENCH |
| 380 | STEEL PIPE | ○ | 364" BENCH |
| 382 | STEEL PIPE | ○ | 366" BENCH |
| 384 | STEEL PIPE | ○ | 368" BENCH |
| 386 | STEEL PIPE | ○ | 370" BENCH |
| 388 | STEEL PIPE | ○ | 372" BENCH |
| 390 | STEEL PIPE | ○ | 374" BENCH |
| 392 | STEEL PIPE | ○ | 376" BENCH |
| 394 | STEEL PIPE | ○ | 378" BENCH |
| 396 | STEEL PIPE | ○ | 380" BENCH |
| 398 | STEEL PIPE | ○ | 382" BENCH |
| 400 | STEEL PIPE | ○ | 384" BENCH |
| 402 | STEEL PIPE | ○ | 386" BENCH |
| 404 | STEEL PIPE | ○ | 388" BENCH |
| 406 | STEEL PIPE | ○ | 390" BENCH |
| 408 | STEEL PIPE | ○ | 392" BENCH |
| 410 | STEEL PIPE | ○ | 394" BENCH |
| 412 | STEEL PIPE | ○ | 396" BENCH |
| 414 | STEEL PIPE | ○ | 398" BENCH |
| 416 | STEEL PIPE | ○ | 400" BENCH |
| 418 | STEEL PIPE | ○ | 402" BENCH |
| 420 | STEEL PIPE | ○ | 404" BENCH |
| 422 | STEEL PIPE | ○ | 406" BENCH |
| 424 | STEEL PIPE | ○ | 408" BENCH |
| 426 | STEEL PIPE | ○ | 410" BENCH |
| 428 | STEEL PIPE | ○ | 412" BENCH |
| 430 | STEEL PIPE | ○ | 414" BENCH |
| 432 | STEEL PIPE | ○ | 416" BENCH |
| 434 | STEEL PIPE | ○ | 418" BENCH |
| 436 | STEEL PIPE | ○ | 420" BENCH |
| 438 | STEEL PIPE | ○ | 422" BENCH |
| 440 | STEEL PIPE | ○ | 424" BENCH |
| 442 | STEEL PIPE | ○ | 426" BENCH |
| 444 | STEEL PIPE | ○ | 428" BENCH |
| 446 | STEEL PIPE | ○ | 430" BENCH |
| 448 | STEEL PIPE | ○ | 432" BENCH |
| 450 | STEEL PIPE | ○ | 434" BENCH |
| 452 | STEEL PIPE | ○ | 436" BENCH |
| 454 | STEEL PIPE | ○ | 438" BENCH |
| 456 | STEEL PIPE | ○ | 440" BENCH |
| 458 | STEEL PIPE | ○ | 442" BENCH |
| 460 | STEEL PIPE | ○ | 444" BENCH |
| 462 | STEEL PIPE | ○ | 446" BENCH |
| 464 | STEEL PIPE | ○ | 448" BENCH |
| 466 | STEEL PIPE | ○ | 450" BENCH |
| 468 | STEEL PIPE | ○ | 452" BENCH |
| 470 | STEEL PIPE | ○ | 454" BENCH |
| 472 | STEEL PIPE | ○ | 456" BENCH |
| 474 | STEEL PIPE | ○ | 458" BENCH |
| 476 | STEEL PIPE | ○ | 460" BENCH |
| 478 | STEEL PIPE | ○ | 462" BENCH |
| 480 | STEEL PIPE | ○ | 464" BENCH |
| 482 | STEEL PIPE | ○ | 466" BENCH |
| 484 | STEEL PIPE | ○ | 468" BENCH |
| 486 | STEEL PIPE | ○ | 470" BENCH |
| 488 | STEEL PIPE | ○ | 472" BENCH |
| 490 | STEEL PIPE | ○ | 474" BENCH |
| 492 | STEEL PIPE | ○ | 476" BENCH |
| 494 | STEEL PIPE | ○ | 478" BENCH |
| 496 | STEEL PIPE | ○ | 480" BENCH |
| 498 | STEEL PIPE | ○ | 482" BENCH |
| 500 | STEEL PIPE | ○ | 484" BENCH |

DEED NO. 10
 Chase Street & North of Chase

STATE OF INDIANA)
 COUNTY OF LAKE)

THIS IS TO CERTIFY that this map or plan and the survey on which it is based were made in accordance with the provisions of the laws of the State of Indiana, and that the same have been approved and attested by ALTA/ACSM in 2005, and include items 1, 2, 3, 4, 5, 6, 7, 8, 9, 10, 11 and 12 of Table A thereof. Pursuant to the Affidavit contained in accordance with the laws of the State of Indiana, the undersigned certify that the professional opinion of a land surveyor was obtained in the State of Indiana, the Indiana Board of Land Surveyors does not exceed the amount specified therein.

DATE: 10/10/05

TORRENGA SURVEYING, LLC
 Registered Land Surveyor No. LC2000011

| | | | | | |
|--|---|-----------------------------|---|--|--|
| | CLIENT: Chase St Industrial Center 400 Chase St Gary, IN 46508 Phone: 773-844-4000 Fax: 773-844-4001 E-MAIL: info@torrenga.com WWW: www.torrenga.com | DATE: 10/10/05 DRAWN BY: | ALTA/ACSM Land Title Survey 400 Chase Street GARY, INDIANA 46508 LAKE COUNTY | TORRENGA SURVEYING, LLC PROFESSIONAL LAND SURVEYORS 907 RIDGE ROAD, MUNSTER, INDIANA 46321 TEL. NO. (219) 856-1998 WWW: WWW.TORRENGA.COM | |
|--|---|-----------------------------|---|--|--|