

WEST PLAT BOUNDARY $N01^{\circ}59'48'' E 1170.00'$

173.28' (PLAT)

11.23
 N 88°20' 34" W
 500.00'
 4.99.96'
 NORTH LINE OF THE S.W. 1/4
 1488.41' E W
 SOUTH R/W PER R.P.B.J. PG. 164
 SOUTH R/W PER C.R.B. 4540. PG. 1372

169.56'

111.44'

44.25'

286.65'

(1) STORY C.B.S.

135.65'

171.10'

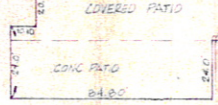
44.20'

37.05'

13.35'

249.05'

1 STORY C.B.S.
 BUILDING ADDITION
 CONCRETE FLOOR ELEVATION = 13.55



$S01^{\circ}59'48'' W 1170.00'$

588°41'15" E
 PENNOCK'S JUPITER INDUSTRIAL PARK FIRST ADDITION
 PG. 30, PG. 13

500.00'

CONCRETE DOCK AREA

STAIRS (TYP)

STAIRS (TYP)

STAIRS (TYP)

208.47'

279.80'

122.15'

74.0'

111.0'

STAIRS (TYP)

42.40'

34.00'

18.10'

154.60'

8.35'

2.75'

1.4'

79.00'

151.10'

159.79'

79.00'

11.44'

11.23'

11.23'

11.23'

11.23'

11.23'

11.23'

11.23'

11.23'

11.23'

11.23'

11.23'

11.23'

11.23'

11.23'

11.23'