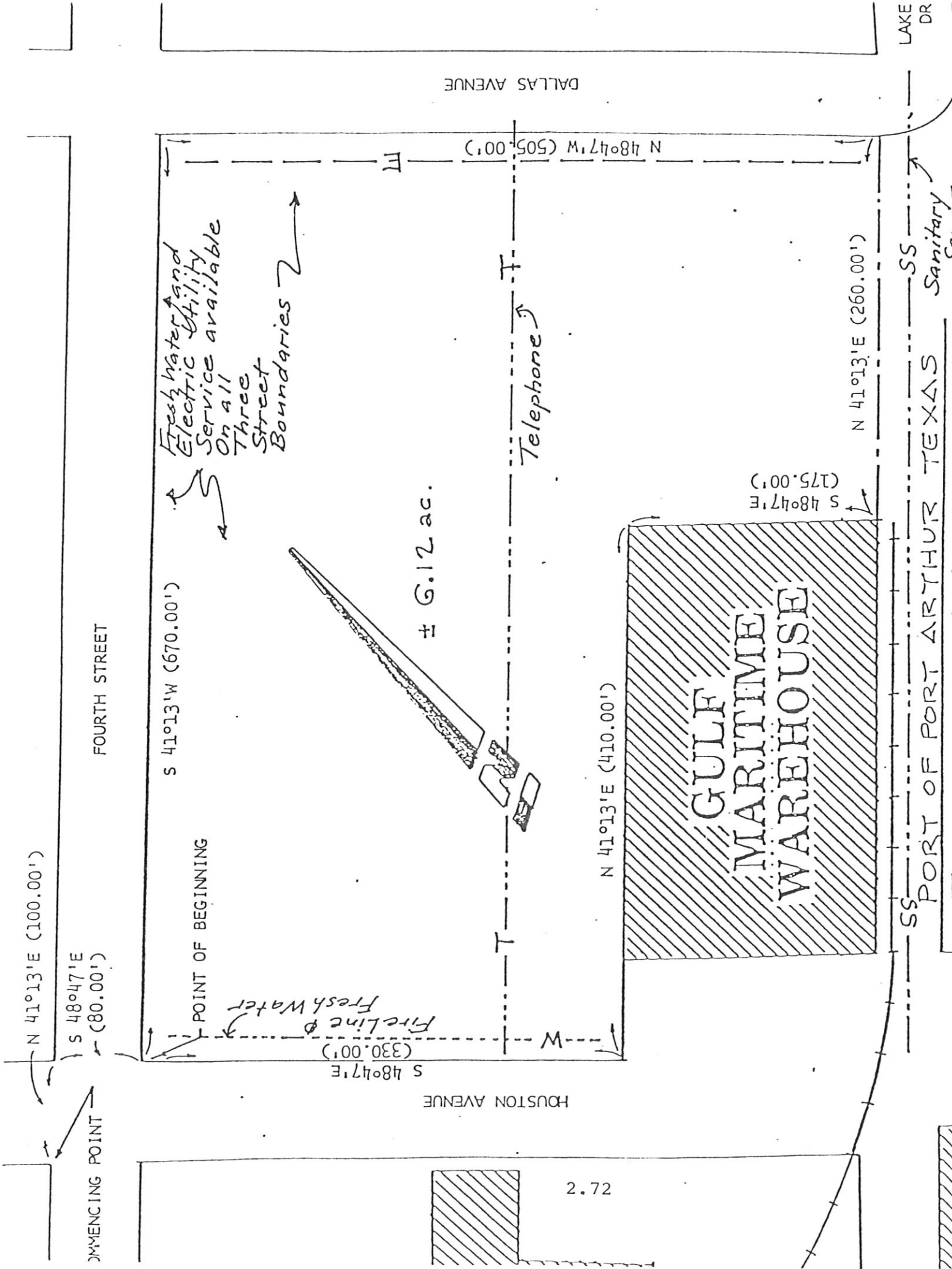




SITE #1

PORT OF PORT ARTHUR, TEXAS

2.68
2.59



N 41°13'E (100.00')

S 48°47'E (80.00')

FOURTH STREET

S 41°13'W (670.00')

POINT OF BEGINNING

S 48°47'E (330.00')
Fireline & Fresh Water

Fresh water and Electric Utility Service available on all Three Street Boundaries

± 6.12 ac.

HOUSTON AVENUE

2.72

W

N 41°13'E (410.00')

GULF MARITIME WAREHOUSE

S 48°47'E (175.00')

N 48°47'W (505.00')

Telephone

N 41°13'E (260.00')

LAKE DR

SS Sanitary Sewer

SS PORT OF PORT ARTHUR TEXAS

FOREIGN TRADE ZONE SITE #1