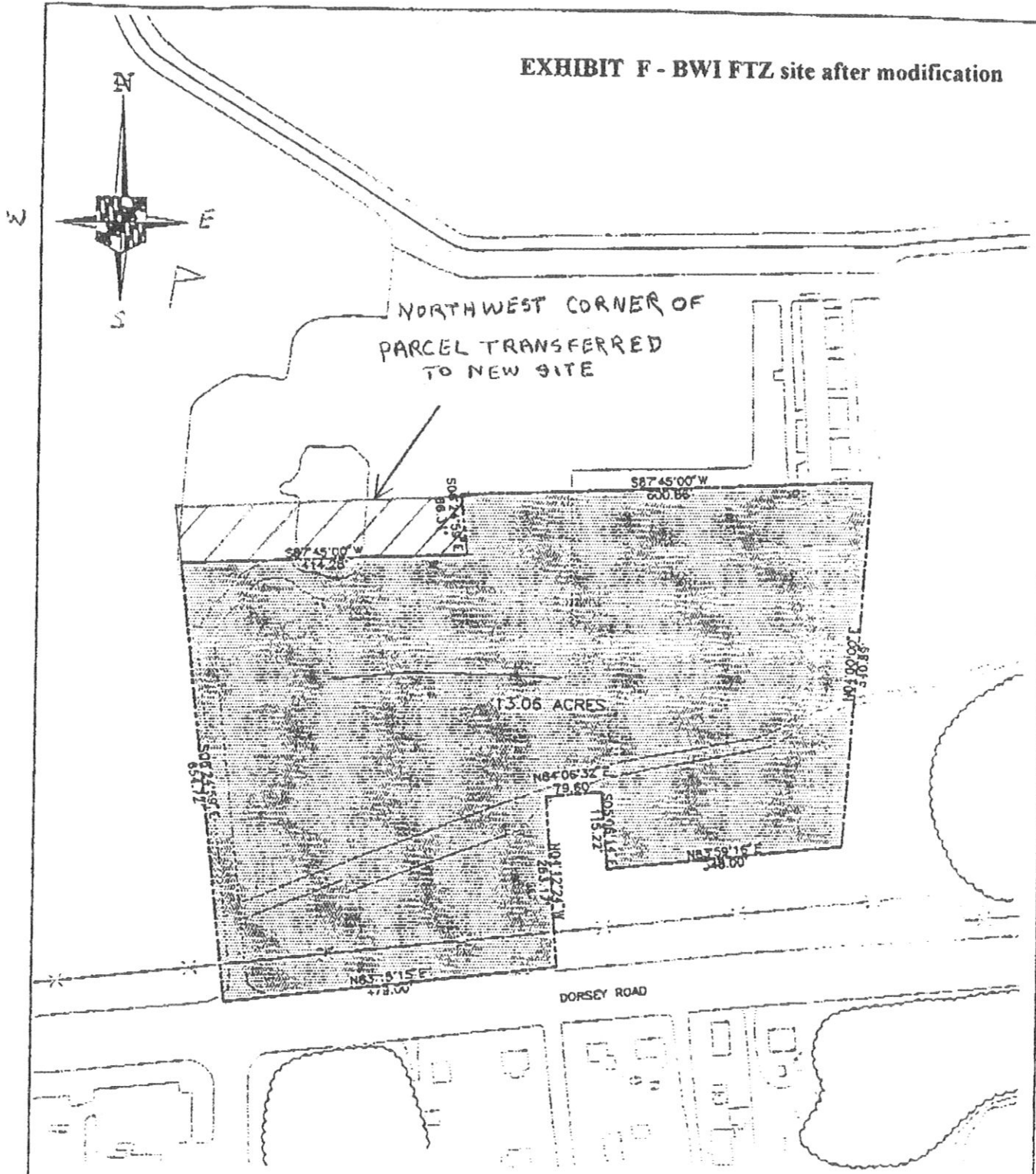



ENLARGED AREA FROM EXHIBIT "E"

### EXHIBIT F - BWI FTZ site after modification



 <b>BW</b> BALTIMORE/WASHINGTON INTERNATIONAL AIRPORT	MARYLAND DEPARTMENT OF TRANSPORTATION MARYLAND AVIATION ADMINISTRATION OFFICE OF PLANNING AND ENGINEERING	
	APPLICATION FOR FOREIGN TRADE ZONE	
<b>URS Greiner</b> CONSULTING ENGINEERING AND PLANNING THURMONT, MARYLAND	SCALE 1" = 200'	EXHIBIT NO.
	DATE SEPT. 11, 1997	