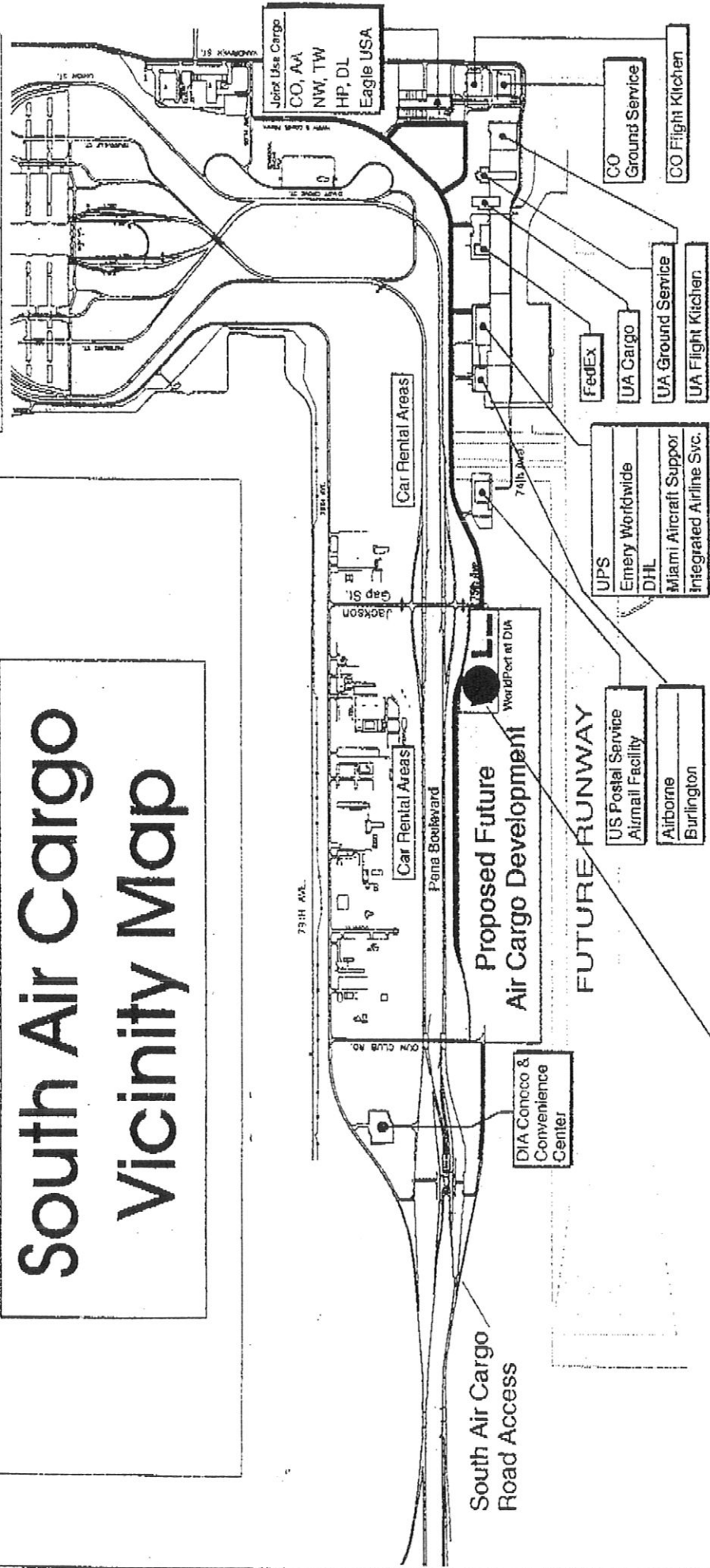


**Denver International Airport**

**South Air Cargo  
Vicinity Map**

For Further Information,  
Please Contact our  
Business Development Office  
at (303)342-2200 x-2523  
fax (303)342-2525



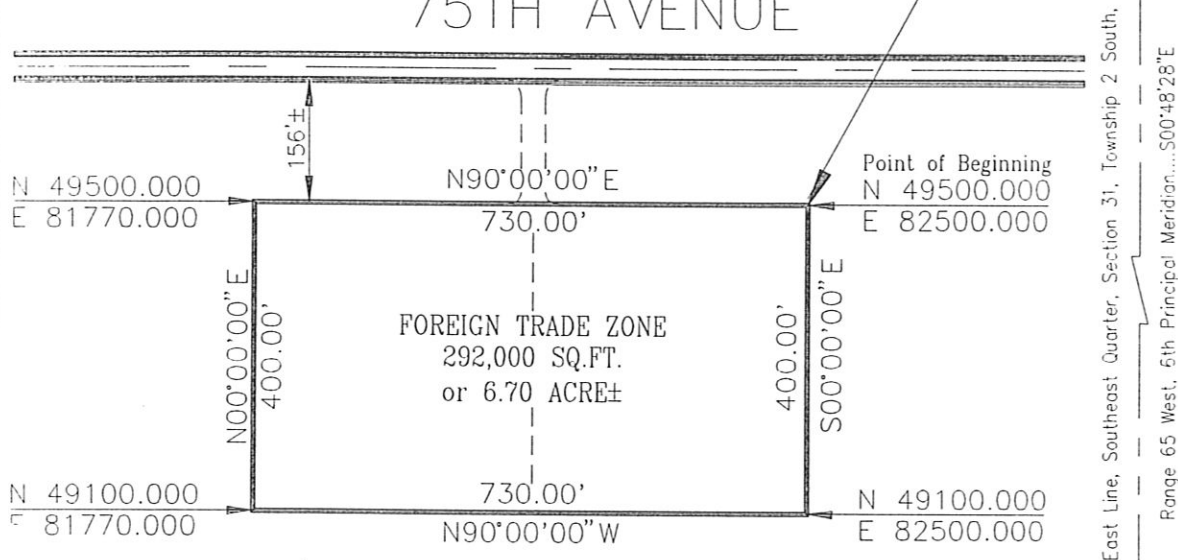
6.7 acre site  
FTZ 123, Denver, Colorado



SCALE: 1" = 200'

POINT OF COMMENCEMENT  
 East Quarter Corner, Section 31,  
 Township 2 South, Range 65 West,  
 6th Principal Meridian, being a 3"  
 Brass Cap in concrete, L.S. #14592,  
 N50206.626, E83582.002

75TH AVENUE



SE 1/4, T2S, R65W, SEC. 31

Southeast Corner, Section 31,  
 Township 2 South, Range 65 West,  
 6th Principal Meridian, being a  
 Pipe with Blocked Cap, not marked  
 N47549.919, E83619.456

The Basis of Bearings and Survey Coordinate System values  
 are taken from the Denver International Airport (DIA) grid  
 control map, which may be reviewed at the DIA Engineering  
 Section, Survey Office, 7141-Powhaton Rd., Denver, Co. 80249

Note: This does not represent a monumented  
 land survey. Nor does it represent a search  
 for easements or Rights-of-Way of record.  
 It is intended only to depict the attached  
 description.

*Michael Steffens* 2/19/97

Michael Steffens P.E. Date  
 Manager of Construction



CITY AND COUNTY OF DENVER  
 DEPARTMENT OF AVIATION  
 DENVER INTERNATIONAL AIRPORT

REVISED		
NO.	DATE	NAME

FOREIGN TRADE ZONE  
 PROPOSED LEASE AREA  
 EXHIBIT

REQUESTED BY: P. GINGRAS	DATE 2/19/97	SCALE 1"=200'	DRAWN BY: JMM FIELD BY: --- CHECKED BY: K.R.C.	SHEET NO. 1 OF 1 SHEETS	DRAWING NO. ADDD1204112511 FREGN13N.DWG
-----------------------------	-----------------	------------------	--	----------------------------	---