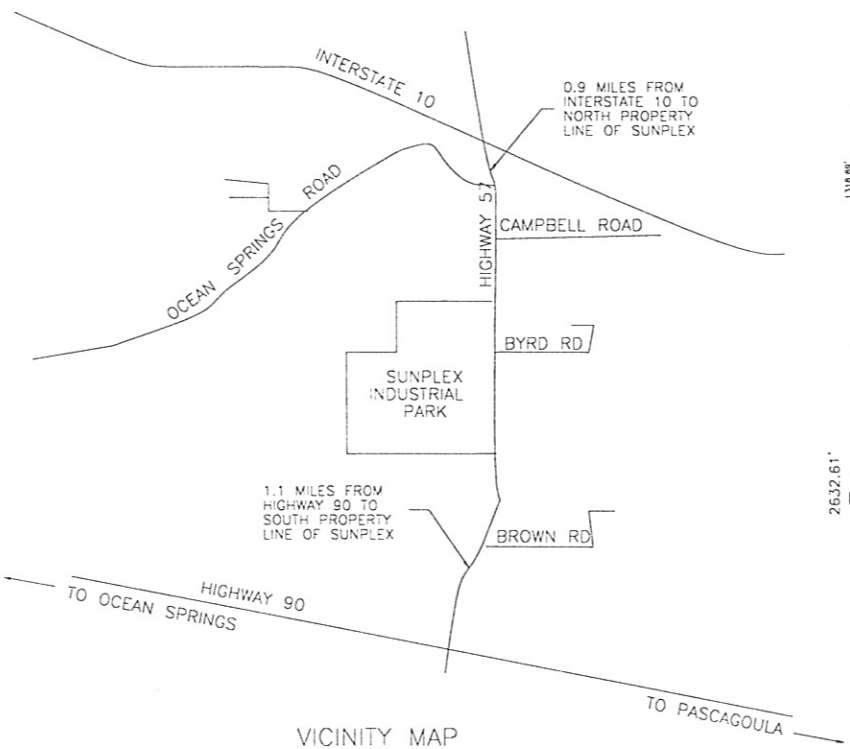


Jackson County Sunplex Industrial Park Two Parcels, 65 Acres Total

LOT OWNERSHIP KEY

1-	21-	42A-	OPTICAL TOOLING AND EQUIPMENT CO.
2-	22-	42B-	RTS ACCELERATOR TECHNOLOGY'S INC.
3-	23-	43-	MERCIER'S CABINET AND WOODWORKING
4-	24-	44-	
5-	25-	45-	
6-	26-	46-	
7-	27-	47-	
8-	28-	48-	
9-	29-	49-	
10-	30-	50-	
11-	31-	51-	
12-	32-	52-	
13-	33-	53-	
14-	34-	54-	
15-	35-	55-	
16-	36-	56-	
17-	37-	57-	
18-	38-		
19-	39-		
20A-	40-		
20B-	41-		
20C-			

NW CORNER OF THE
NW 1/4 OF THE NE 1/4
OF SECTION 19, T7S, R7W

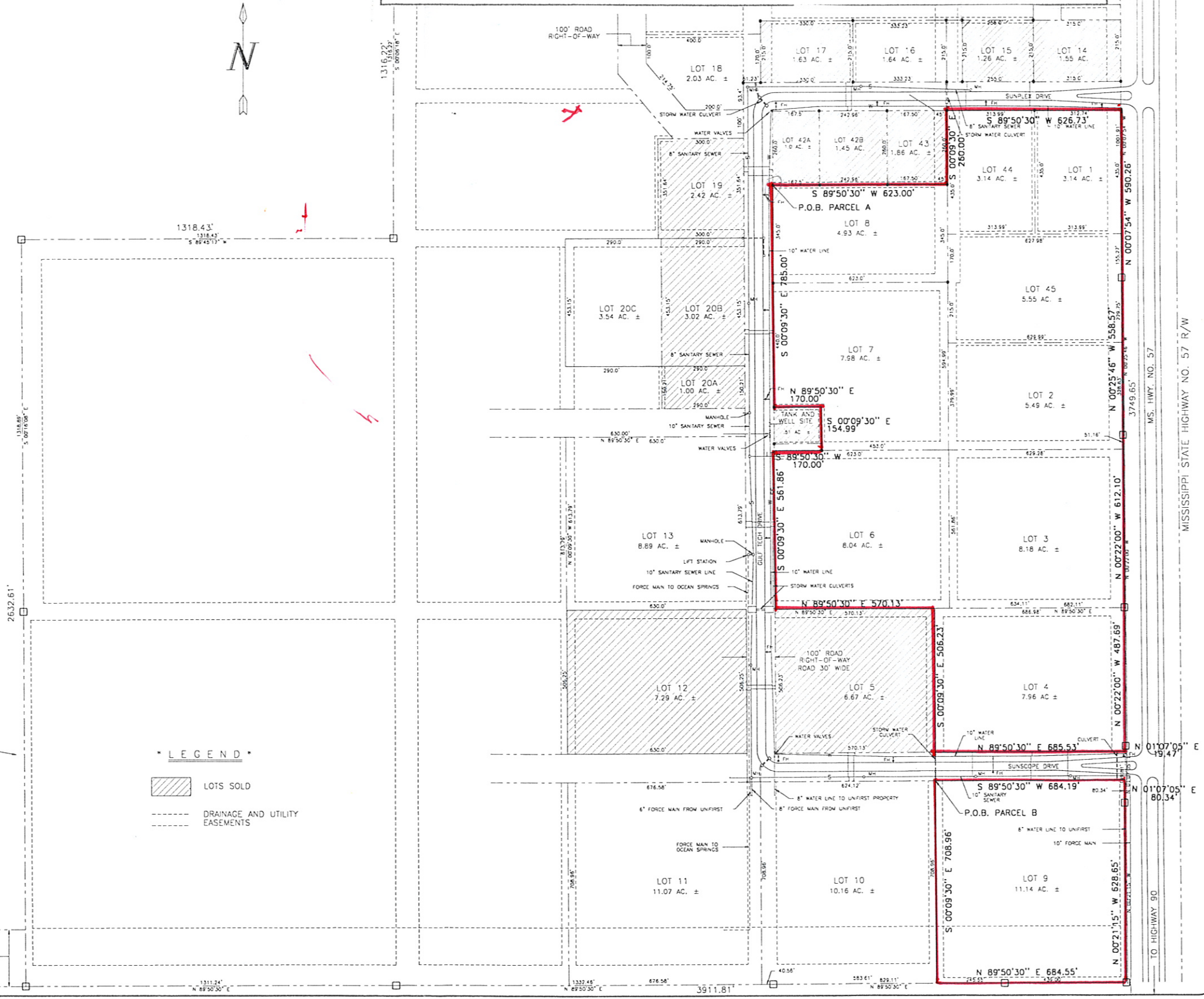


VICINITY MAP
NTS

NOTE:
SEE SUNPLEX PROTECTIVE COVENANTS
FOR ACTUAL DRAINAGE EASEMENT
WIDTHS AND RESTRICTIONS. EXACT
WIDTHS AND LOCATION OF UTILITY
EASEMENTS AND RESTRICTIONS WITHIN
UTILITY EASEMENTS ARE TO BE ARRANGED
AND AGREED WITH SINGING RIVER ELECTRICAL
POWER ASSOCIATION FOR EACH LOT BEFORE
SALE.

LEGEND

- LOTS SOLD
- DRAINAGE AND UTILITY EASEMENTS



COMPTON ENGINEERING, P.A.
CONSULTING ENGINEERS
1706 Convent Avenue
Pascagoula, Mississippi 39567
Phone: (601) 762-3970
Fax: (601) 769-9079
BBS: (601) 762-0602

SUNPLEX INDUSTRIAL PARK
LOT LAYOUTS AND VICINITY MAP

SCALE:	1" = 200'
DWG. NO.:	9-435
JOB NO.:	3387
DATE:	12/4/96
DSGN.:	N/A
DWG. BY:	M.G.HILL
CHK.:	L.J. COMPTON
APVD.:	

VIEWING SCALES
AS SHOWN ON ORIGINAL DRAWING OR THIS PARTIAL PRINT
SCALE ACCURACY
0 1'