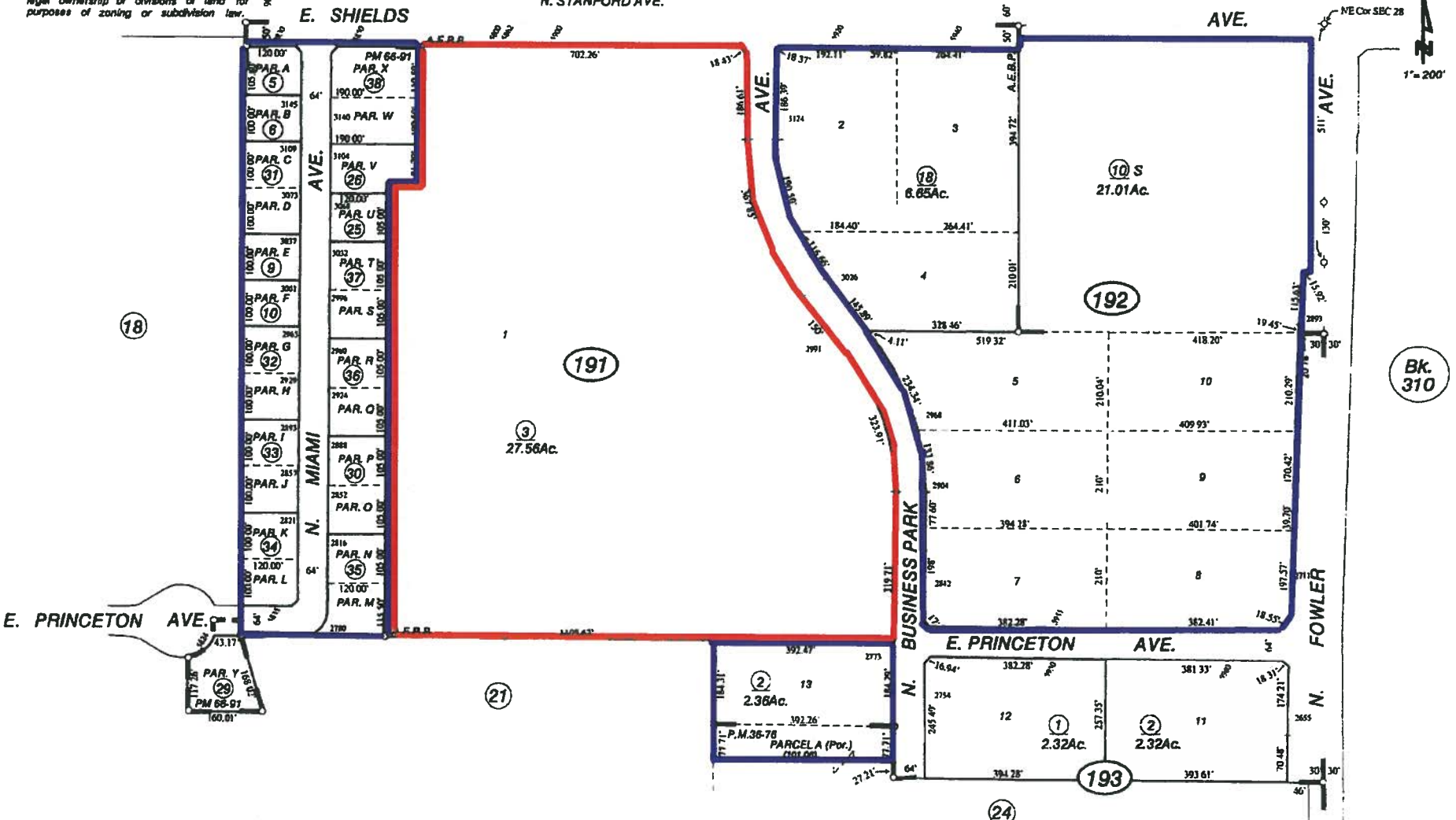


SUBDIVIDED LAND IN POR. SEC. 28, T. 13 S., R. 21 E., M.D.B.&M.

Tax Rate Area 5-353 (14)

496-19

NOTE: This map is for Assessment purposes only. It is not to be construed as portraying legal ownership or divisions of land for purposes of zoning or subdivision law.



Airways East Business Park - Tr. No. 3428 - Plat Bk. 38, Pgs. 95-97
Parcel Map No. 80-12, Bk. 36, Pgs. 76 & 77
Parcel Map No. 2004-35, Bk. 66, Pg. 91 & 92

Assessor's Map Bk. 496 - Pg. 19
County of Fresno, Calif.

Site 8

NOTE - Assessor's Block Numbers Shown in Ellipses.
Assessor's Parcel Numbers Shown in Circles.

— To be Removed

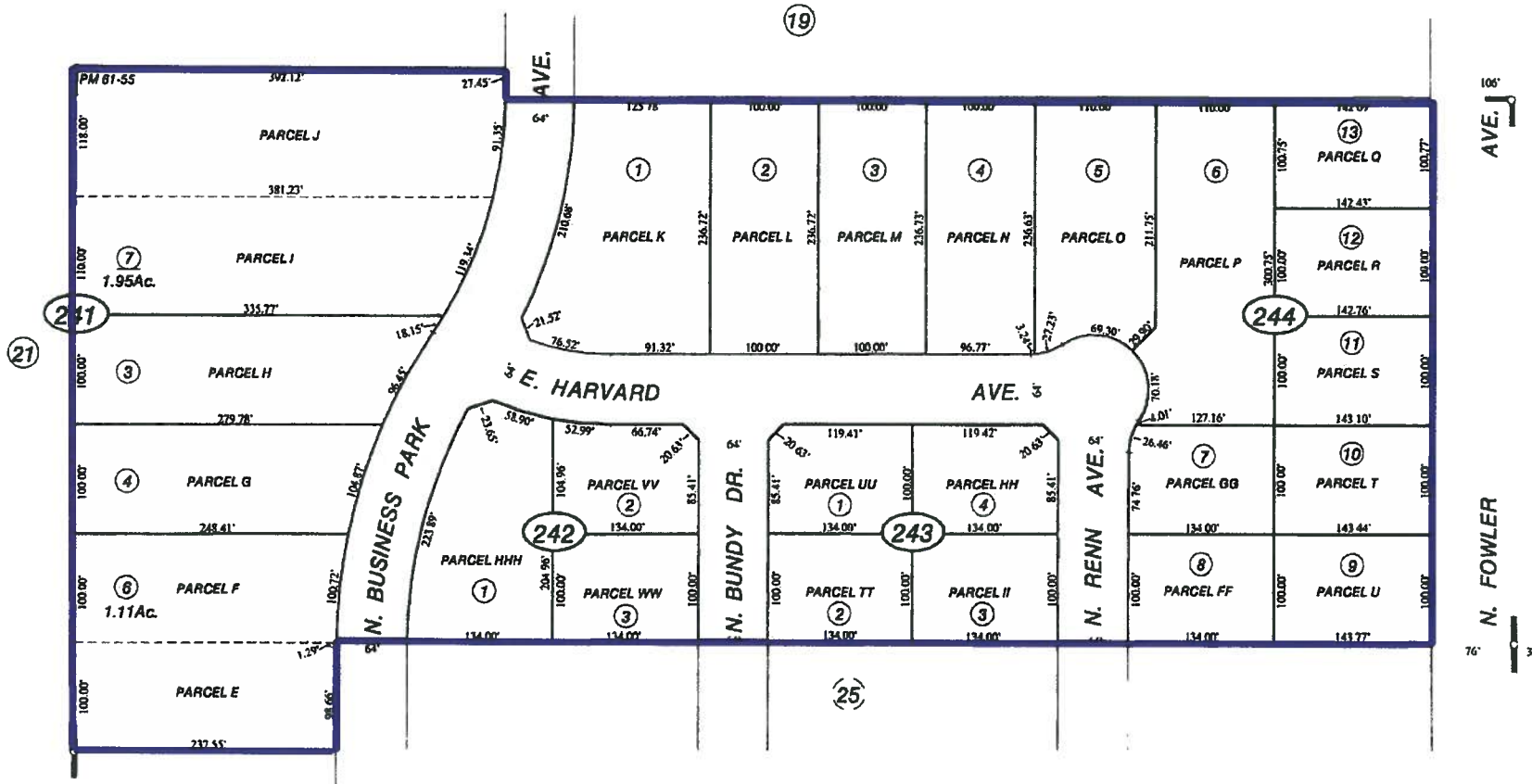
— Remaining

SUBDIVIDED LAND IN POR. SEC. 28, T.13 S., R.21 E., M.D.B.& M.

Tax Rate Area
5-353

496-24

--- NOTE ---
This map is for Assessment purposes only.
It is not to be construed as portraying
legal ownership or divisions of land for
purposes of zoning or subdivision law.



Parcel Map No. 00-12, Bk. 61, Pgs. 55-56

Assessor's Map Bk. 496 - Pg. 24
County of Fresno, Calif.

Site 8

NOTE - Assessor's Block Numbers Shown in Ellipses.
Assessor's Parcel Numbers Shown in Circles.

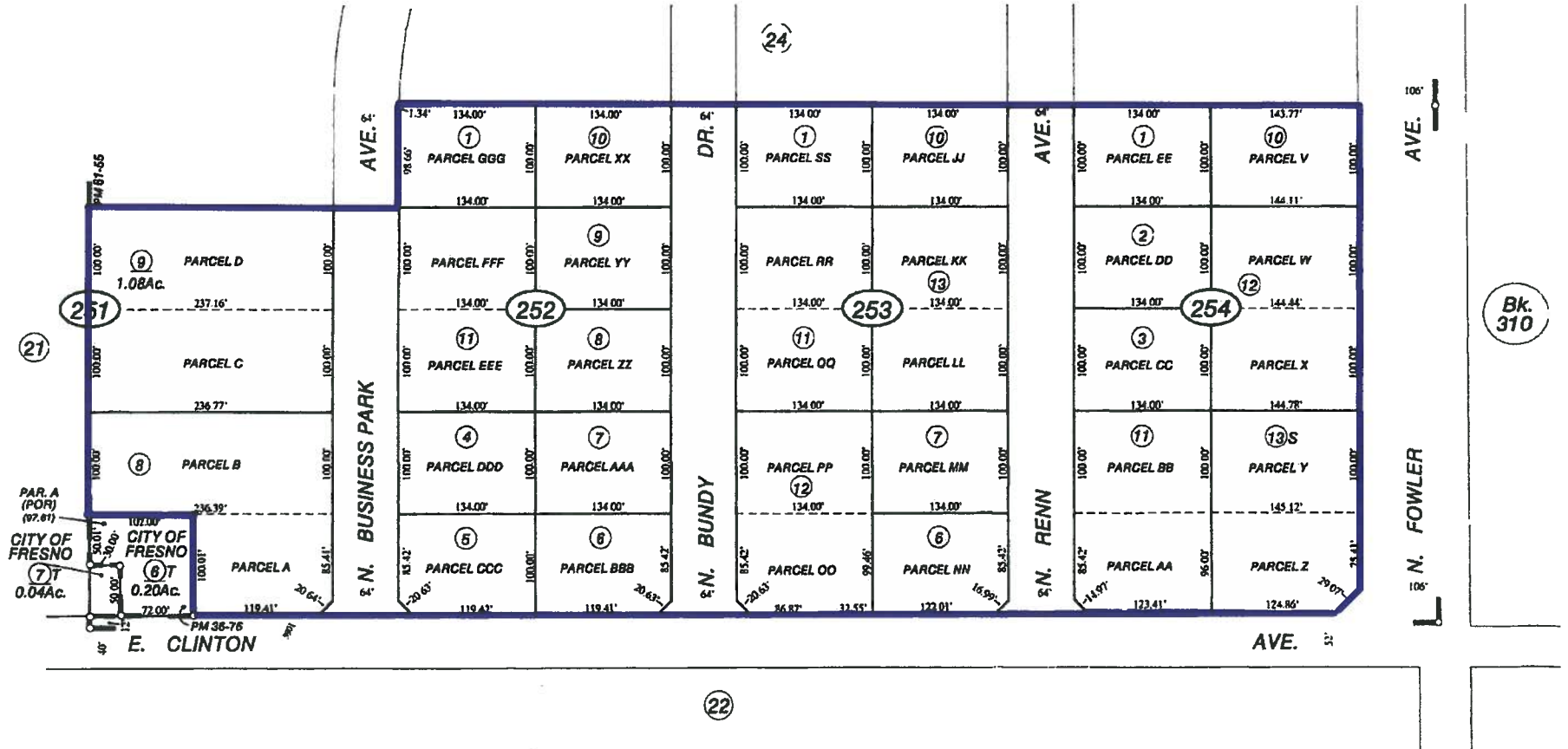
— To be Removed

SUBDIVIDED LAND IN POR. SEC. 28, T.13 S., R.21 E., M.D.B.& M.

Tax Rate Area
5-353

496-25

--- NOTE ---
This map is for Assessment purposes only.
It is not to be construed as portraying
legal ownership or divisions of land for
purposes of zoning or subdivision law.



Parcel Map No. 80-12 - Bk. 36, Pgs. 76-77
Parcel Map No. 00-12 - Bk. 61, Pgs. 55-56

Assessor's Map Bk. 496 - Pg. 25
County of Fresno, Calif.

NOTE - Assessor's Block Numbers Shown in Ellipses.
Assessor's Parcel Numbers Shown in Circles.

Site 8

— To be Removed