

MAP NO. 12659

SHEET 3 OF 8 SHEETS

SIEMPRE VIVA BUSINESS PARK

BASIS OF BEARINGS

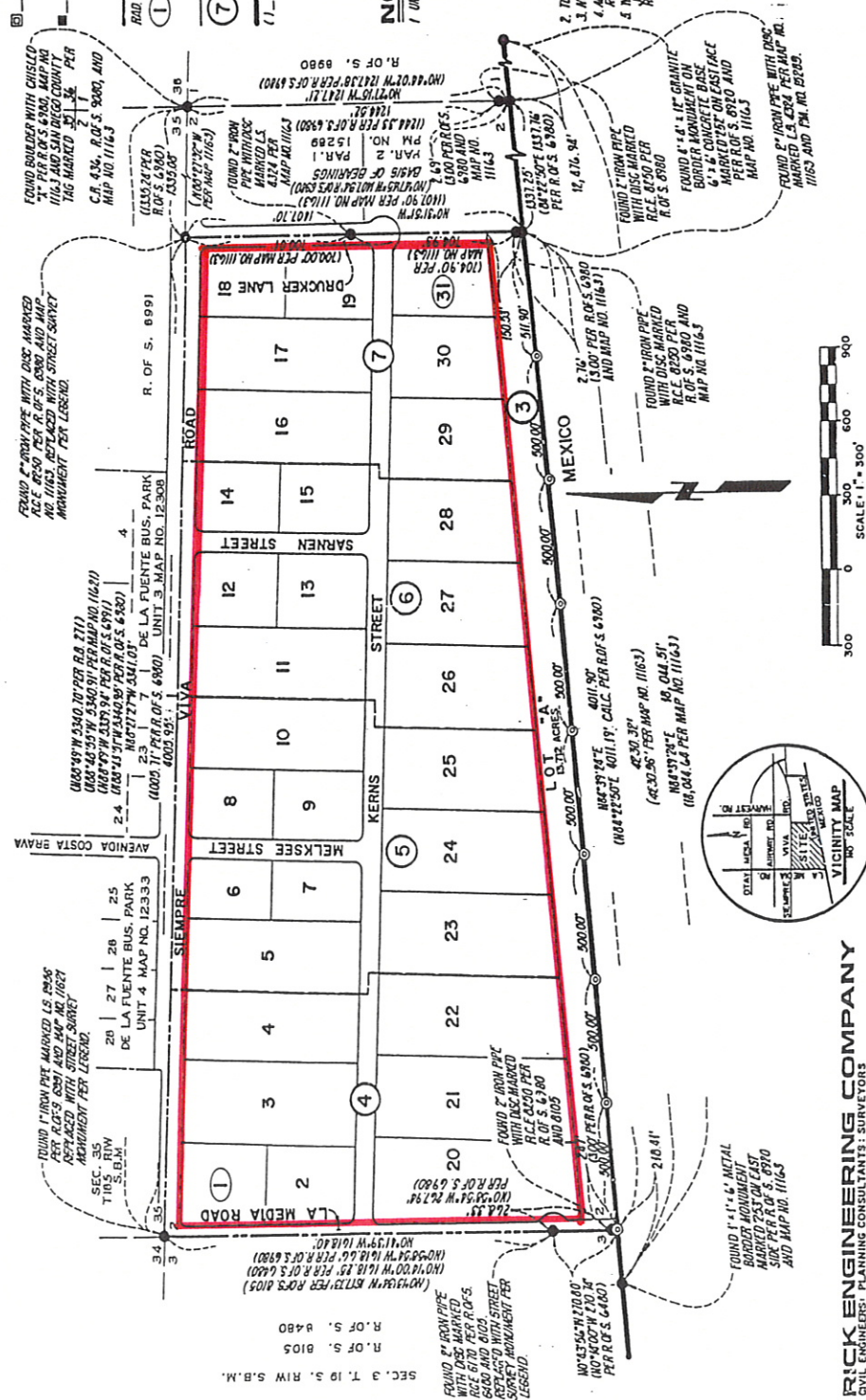
THE BASIS OF BEARINGS FOR THIS MAP IS THE WESTERY LINE OF PARCEL MAP NO. 15287, L.S. N. 0° 41' 51" W

LEGEND

- INDICATES FOUND MONUMENT AS NOTED HEREON
- INDICATES WILL SET 2" x 4" IRON PIPE WITH DISC MARKED L.S. 3169
- ⊗ INDICATES WILL SET STREET SURVEY MONUMENT PER SAN DIEGO REGIONAL STANDARD DRAWINGS M-10 AND M-10-1 WITH DISC MARKED L.S. 3169
- ⊕ INDICATES STREET SURVEY MONUMENT MARKED PER L.S. 1917 PER MAP NO. 12333 NOT SET PRIOR TO THE RECONSTRUCTION OF THIS MAP
- ⊖ INDICATES SUBDIVISION BOUNDARY
- ⊙ INDICATES RADIAL BEARING
- ① ③① INDICATES FIRST AND LAST LOT NUMBER, RESPECTIVELY
- ⑦ INDICATES SHEET NUMBER (INDICATE MAP ONLY)
- ① INDICATES SHEET NO. (INDICATE MAP ONLY)
- ① INDICATES INTERSECTIONAL BOUNDARY
- ① INDICATES RECORD INFORMATION AS NOTED HEREON

NOTES

- 1 UNLESS OTHERWISE SHOWN ON THIS MAP:
 - A. ALL LOT CORNERS EXCEPT AS DESCRIBED BELOW WILL BE MONUMENTED BY A 3/4" x 1/4" IRON PIPE WITH DISC STAMPED L.S. 3169.
 - B. LOT CORNERS ALONG THE BOUNDARIES OF DECOMPOSED STREET RIGHT OF WAY WILL BE MONUMENTED BY 4" DISC STAMPED L.S. 3169 SET AT AN ANGLE OF THE LOT LINE AS INDICATED ON THIS MAP.
 - C. ALL CORNERS OF THE BOUNDARIES OF DECOMPOSED STREET RIGHT OF WAY WILL BE MONUMENTED BY 4" DISC STAMPED L.S. 3169 SET AT AN ANGLE OF 7.00° IN THE SUDHWALK. THE OFFSET SHALL BE MEASURED RADIALLY.
- 2 TOTAL AREA WITHIN THE SUBDIVISION BOUNDARY IS: 151,401 ACRES
- 3 NUMBER OF LOTS: 31 AND LOT "A"
- 4 ALL DISTANCES AND/OR STREET WIDTHS SHOWN WITHOUT DIMENSIONAL REPRESENTATION SHALL BE TO ZERO HUNDRETHS.
- 5 WATER EASEMENT TO OXY WATER DISTRICT RECORDED UNDER MAP NO. 89-353966 OF OFFICIAL RECORDS LIES ENTIRELY WITHIN LA MEDIA ROAD



JOB NO. 10019 B
L.C. 138 - 1779

PROCEDURE OF SURVEY. INDEX MAP AND LOT "A"

TM. 86-1023 W.O. 861023

RED = PROPOSED BOUNDARIES



RICK ENGINEERING COMPANY
CIVIL ENGINEERS, PLANNING CONSULTANTS, SURVEYORS
3000 FLO FLO DRIVE, CARLSBAD, CALIFORNIA 92008 (619) 729-4487
345 S. RAMON SANTA FE RD. SAN MARCO CA. 92081 (619) 744-4800