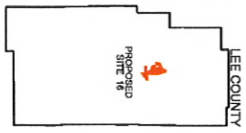
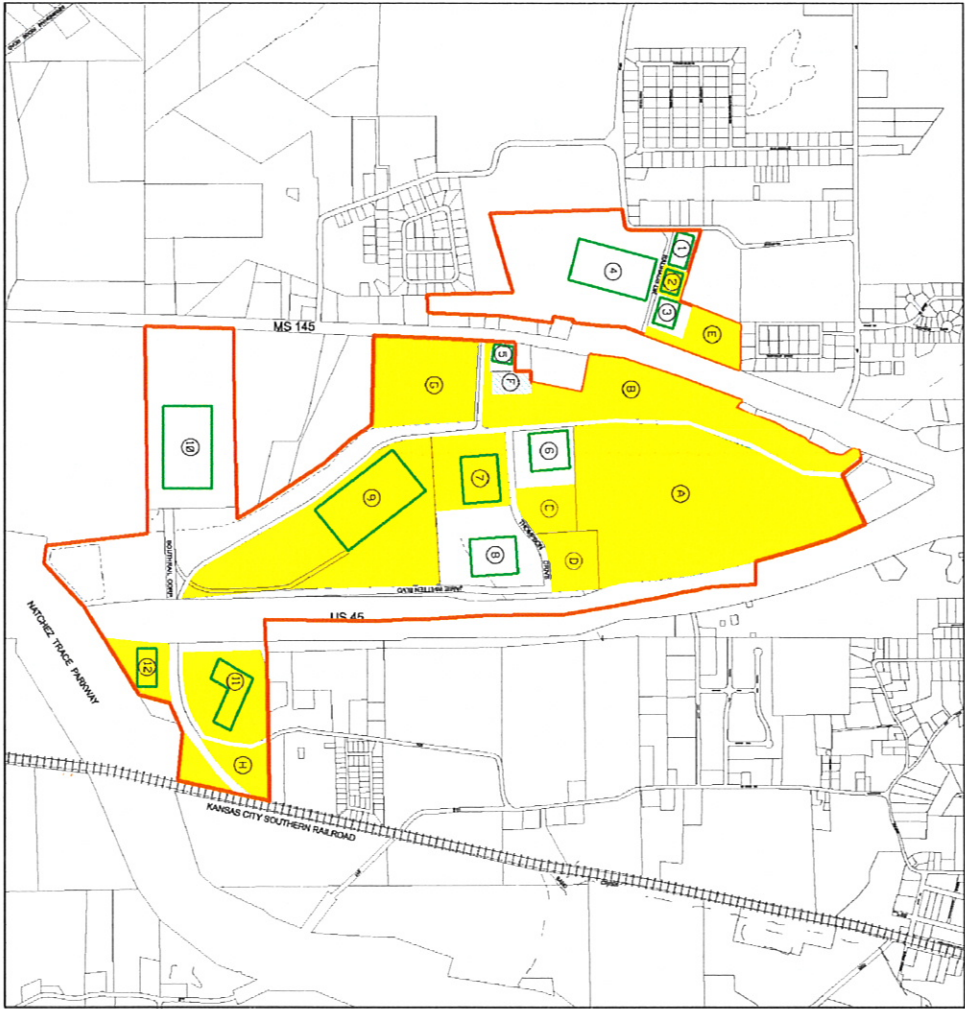
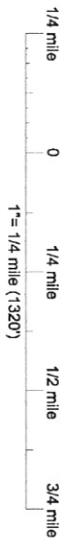


TURNER INDUSTRIAL PARK GENERAL PURPOSE AREA



- LEGEND:**
- GENERAL PURPOSE ZONE BOUNDARY
  - EXISTING FACILITIES/ACREAGE
1. FOAMMADE INDUSTRIES/ 3.1 ACRES
  2. PRECISION BLADES/ 2.0 ACRES
  3. GRAHAM ROOFING/ 4.0 ACRES
  4. BAUHAUS SOUTH, INC./ 50.4 ACRES
  5. MARTIN SUPPLY COMPANY/ 2 ACRES
  6. VF JEANSWEAR CORPORATION/ 10.1 ACRES
  7. STRUCTURED FIBERS/ 16.0 ACRES
  8. OMEGA MOTION, LLC/ 21.4 ACRES
  9. LANE FURNITURE INDUSTRIES/ 53.4 ACRES
  10. FMC/ 45.5 ACRES
  11. SHURPET-STONE CONTAINER/ 19.7 ACRES
  12. WAREHOUSE, LANE FURNITURE INDUSTRIES/ 7.4 ACRES
- TOTAL INDUSTRIAL ACREAGE= 235 ACRES
- AVAILABLE SITES/ ACREAGE

- A. LEE COUNTY/101.0 ACRES
  - B. LEE COUNTY/27.0 ACRES
  - C. LEE COUNTY/7.15 ACRES
  - D. LEE COUNTY/8.82 ACRES
  - E. LEE COUNTY/8.0 ACRES
  - F. MS BUREAU OF MARCOT/CS/9.25 ACRES
  - G. LEE COUNTY/25.0 ACRES
  - H. LEE COUNTY/8.0 ACRES
- TOTAL AVAILABLE ACREAGE= 194.02 ACRES



LEE COUNTY  
PROPOSED SITE 16



COMMUNITY DEVELOPMENT FOUNDATION  
300 WEST MAIN STREET, P.O. BOX 4  
LEE COUNTY, MISSISSIPPI 39001  
TOLL FREE: 800.523.3463 PHONE: 662.842.4521  
FAX: 662.241.0093 EMAIL: INFO@CDPMS.ORG  
WEBSITE: WWW.CDPMS.ORG

