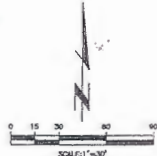


SEE SHEET NO. 3

LEGEND:

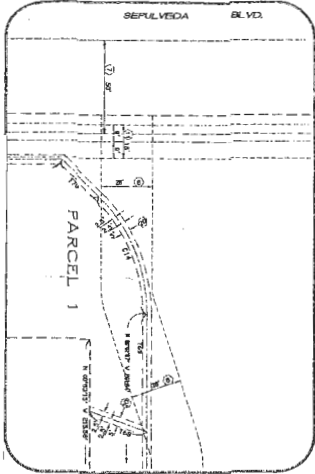
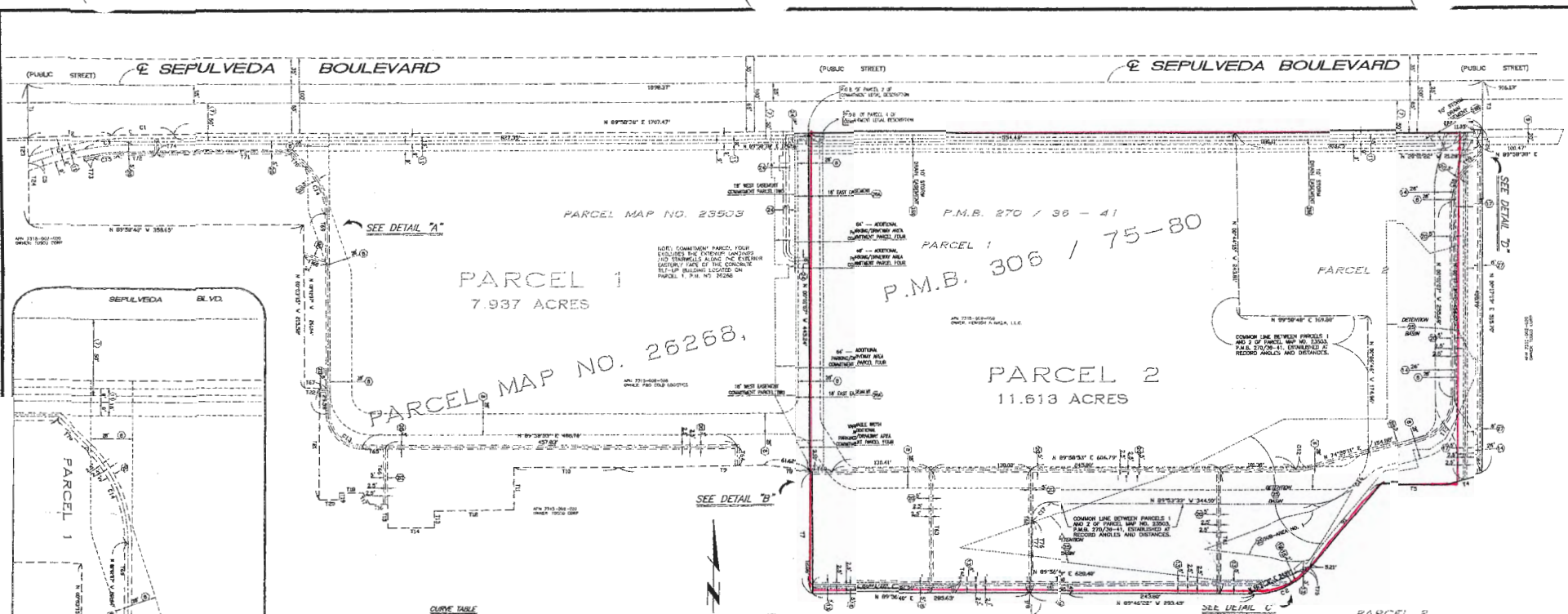
1	EXISTING CONCRETE
2	EXISTING CONCRETE
3	EXISTING CONCRETE
4	EXISTING CONCRETE
5	EXISTING CONCRETE
6	EXISTING CONCRETE
7	EXISTING CONCRETE
8	EXISTING CONCRETE
9	EXISTING CONCRETE
10	EXISTING CONCRETE
11	EXISTING CONCRETE
12	EXISTING CONCRETE
13	EXISTING CONCRETE
14	EXISTING CONCRETE
15	EXISTING CONCRETE
16	EXISTING CONCRETE
17	EXISTING CONCRETE
18	EXISTING CONCRETE
19	EXISTING CONCRETE
20	EXISTING CONCRETE
21	EXISTING CONCRETE
22	EXISTING CONCRETE
23	EXISTING CONCRETE
24	EXISTING CONCRETE
25	EXISTING CONCRETE
26	EXISTING CONCRETE
27	EXISTING CONCRETE
28	EXISTING CONCRETE
29	EXISTING CONCRETE
30	EXISTING CONCRETE
31	EXISTING CONCRETE
32	EXISTING CONCRETE
33	EXISTING CONCRETE
34	EXISTING CONCRETE
35	EXISTING CONCRETE
36	EXISTING CONCRETE
37	EXISTING CONCRETE
38	EXISTING CONCRETE
39	EXISTING CONCRETE
40	EXISTING CONCRETE
41	EXISTING CONCRETE
42	EXISTING CONCRETE
43	EXISTING CONCRETE
44	EXISTING CONCRETE
45	EXISTING CONCRETE
46	EXISTING CONCRETE
47	EXISTING CONCRETE
48	EXISTING CONCRETE
49	EXISTING CONCRETE
50	EXISTING CONCRETE
51	EXISTING CONCRETE
52	EXISTING CONCRETE
53	EXISTING CONCRETE
54	EXISTING CONCRETE
55	EXISTING CONCRETE
56	EXISTING CONCRETE
57	EXISTING CONCRETE
58	EXISTING CONCRETE
59	EXISTING CONCRETE
60	EXISTING CONCRETE
61	EXISTING CONCRETE
62	EXISTING CONCRETE
63	EXISTING CONCRETE
64	EXISTING CONCRETE
65	EXISTING CONCRETE
66	EXISTING CONCRETE
67	EXISTING CONCRETE
68	EXISTING CONCRETE
69	EXISTING CONCRETE
70	EXISTING CONCRETE
71	EXISTING CONCRETE
72	EXISTING CONCRETE
73	EXISTING CONCRETE
74	EXISTING CONCRETE
75	EXISTING CONCRETE
76	EXISTING CONCRETE
77	EXISTING CONCRETE
78	EXISTING CONCRETE
79	EXISTING CONCRETE
80	EXISTING CONCRETE
81	EXISTING CONCRETE
82	EXISTING CONCRETE
83	EXISTING CONCRETE
84	EXISTING CONCRETE
85	EXISTING CONCRETE
86	EXISTING CONCRETE
87	EXISTING CONCRETE
88	EXISTING CONCRETE
89	EXISTING CONCRETE
90	EXISTING CONCRETE
91	EXISTING CONCRETE
92	EXISTING CONCRETE
93	EXISTING CONCRETE
94	EXISTING CONCRETE
95	EXISTING CONCRETE
96	EXISTING CONCRETE
97	EXISTING CONCRETE
98	EXISTING CONCRETE
99	EXISTING CONCRETE
100	EXISTING CONCRETE



NO.	DESCRIPTION	DATE
1	REVISION FOR NEW CONCRETE	09-12-01
2	REVISION FOR PROFESSIONAL POLICY & SIGNATURE	12-20-01
3	REVISION FOR NEW CONCRETE	01-24-02
4	REVISION FOR NEW CONCRETE	03-05-02
5	REVISION FOR NEW CONCRETE	03-27-02
6	REVISION FOR NEW CONCRETE	04-05-02
7	REVISION FOR NEW CONCRETE	04-23-02
8	REVISION FOR NEW CONCRETE	05-02-02
9	REVISION FOR NEW CONCRETE	05-21-02
10	REVISION FOR NEW CONCRETE	06-03-02
11	REVISION FOR NEW CONCRETE	06-12-02

<p>LEGAL DESCRIPTION:</p> <p>SEE SHEET NO. 1 FOR COMPLETE LEGAL DESCRIPTION</p>	<p>BASIS OF BEARINGS:</p> <p>THE BEARINGS SHOWN HEREON ARE BASED ON THE COVERAGE OF SURVEYING INSTRUMENTS BEING A SERIES OF 1" AS PER RECORD OF SURVEY FILED IN BOOK 176, PAGES 18 AND 21 OF RECORDS OF SURVEYS, RECORDS OF COUNTY OF LOS ANGELES, STATE OF CALIFORNIA.</p>	<p>PREPARED FOR:</p> <p>NEWSON DEVELOPMENT CORPORATION 4636 E. UNIVERSITY DRIVE, SUITE 265 PHOENIX, AZ 85034 PHONE: (480) 929-1773 FAX: (480) 929-1771</p>	<p>PREPARED BY:</p> <p>Thienes Engineering, Inc. CIVIL ENGINEERING - LAND SURVEYING 11800 VALLEY VIEW AVENUE SUITE 100 CARSON, CALIFORNIA 90746 TEL: (415) 651-6111 FAX: (415) 651-1113</p>	<p>ALTA/ACSM LAND TITLE SURVEY</p> <p>1710 EAST SEPULVEDA BOULEVARD</p> <p>CARSON CALIFORNIA</p> <p>DRAWN BY: JMW CHECKED BY: MWS SCALE: 1" = 30' DATE: AUGUST, 2001 J.K. BOONE SHEET 4 OF 4</p>
---	---	--	--	--

SEE SHEETS 1 & 2 FOR NEIGHBORING COORDINATIONS, SURVEYOR'S INDEX, ETC. NOTES, AND SURVEYOR'S CERTIFICATE.
SEE SHEET 3 FOR 30' SCALE DETAIL MAP SHEET WESTERLY OF THIS SHEET.



SEE DETAIL "A"

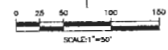
SEE DETAIL "B"

SEE DETAIL "C"

SEE DETAIL "D"

CURVE TABLE

MARKER	CHG	ANGLE	LENGTH
C1	270°41'	188.81'	62.87'
C2	302°47'	80.00'	63.86'
C3	102°47'	441.21'	64.21'
C4	102°47'	423.20'	64.21'
C5	170°41'	80.00'	71.45'
C6	170°41'	188.81'	62.87'
C7	40°47'	84.50'	62.25'
C8	40°47'	80.00'	62.26'
C9	40°47'	47.88'	63.84'
C10	170°41'	80.00'	62.26'
C11	170°41'	80.00'	62.26'
C12	170°41'	80.00'	62.26'
C13	170°41'	80.00'	62.26'
C14	170°41'	80.00'	62.26'
C15	170°41'	80.00'	62.26'
C16	170°41'	80.00'	62.26'
C17	170°41'	80.00'	62.26'
C18	170°41'	80.00'	62.26'
C19	170°41'	80.00'	62.26'
C20	170°41'	80.00'	62.26'

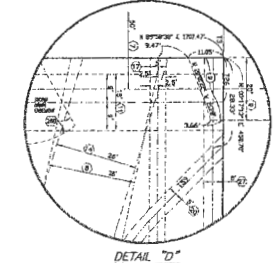
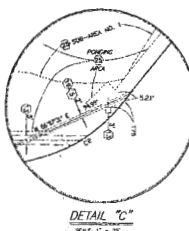
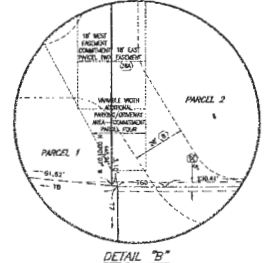


LEGEND:

- 1. BOUNDARY LINE
- 2. EASEMENT
- 3. UTILITY LINE
- 4. CURVE
- 5. TANGENT
- 6. COMMON LINE
- 7. ADJACENT PROPERTY
- 8. PUBLIC STREET
- 9. PRIVATE DRIVE
- 10. FENCE
- 11. CONCRETE WALL
- 12. IRON PIPE
- 13. WOOD POST
- 14. CONCRETE POST
- 15. METAL PIPE
- 16. METAL POST
- 17. METAL PIPE WITH CAP
- 18. METAL POST WITH CAP
- 19. METAL PIPE WITH CAP AND BRACKET
- 20. METAL POST WITH CAP AND BRACKET
- 21. METAL PIPE WITH CAP AND BRACKET AND PLATE
- 22. METAL POST WITH CAP AND BRACKET AND PLATE
- 23. METAL PIPE WITH CAP AND BRACKET AND PLATE AND WELDED END
- 24. METAL POST WITH CAP AND BRACKET AND PLATE AND WELDED END
- 25. METAL PIPE WITH CAP AND BRACKET AND PLATE AND WELDED END AND BRACKET
- 26. METAL POST WITH CAP AND BRACKET AND PLATE AND WELDED END AND BRACKET
- 27. METAL PIPE WITH CAP AND BRACKET AND PLATE AND WELDED END AND BRACKET AND PLATE
- 28. METAL POST WITH CAP AND BRACKET AND PLATE AND WELDED END AND BRACKET AND PLATE
- 29. METAL PIPE WITH CAP AND BRACKET AND PLATE AND WELDED END AND BRACKET AND PLATE AND WELDED END
- 30. METAL POST WITH CAP AND BRACKET AND PLATE AND WELDED END AND BRACKET AND PLATE AND WELDED END
- 31. METAL PIPE WITH CAP AND BRACKET AND PLATE AND WELDED END AND BRACKET AND PLATE AND WELDED END AND BRACKET
- 32. METAL POST WITH CAP AND BRACKET AND PLATE AND WELDED END AND BRACKET AND PLATE AND WELDED END AND BRACKET
- 33. METAL PIPE WITH CAP AND BRACKET AND PLATE AND WELDED END AND BRACKET AND PLATE AND WELDED END AND BRACKET AND PLATE
- 34. METAL POST WITH CAP AND BRACKET AND PLATE AND WELDED END AND BRACKET AND PLATE AND WELDED END AND BRACKET AND PLATE
- 35. METAL PIPE WITH CAP AND BRACKET AND PLATE AND WELDED END AND BRACKET AND PLATE AND WELDED END AND BRACKET AND PLATE AND WELDED END
- 36. METAL POST WITH CAP AND BRACKET AND PLATE AND WELDED END AND BRACKET AND PLATE AND WELDED END AND BRACKET AND PLATE AND WELDED END
- 37. METAL PIPE WITH CAP AND BRACKET AND PLATE AND WELDED END AND BRACKET AND PLATE AND WELDED END AND BRACKET AND PLATE AND WELDED END AND BRACKET
- 38. METAL POST WITH CAP AND BRACKET AND PLATE AND WELDED END AND BRACKET AND PLATE AND WELDED END AND BRACKET AND PLATE AND WELDED END AND BRACKET
- 39. METAL PIPE WITH CAP AND BRACKET AND PLATE AND WELDED END AND BRACKET AND PLATE AND WELDED END AND BRACKET AND PLATE AND WELDED END AND BRACKET AND PLATE
- 40. METAL POST WITH CAP AND BRACKET AND PLATE AND WELDED END AND BRACKET AND PLATE AND WELDED END AND BRACKET AND PLATE AND WELDED END AND BRACKET AND PLATE

TANGENT TABLE

MARKER	DISTANCE	BEARING	MARKER	DISTANCE	BEARING
71	21.20'	N 89°50'21" W	740	8.20'	N 89°50'21" W
72	102.81'	N 89°50'21" W	741	16.20'	N 89°50'21" W
73	102.81'	N 89°50'21" W	742	16.20'	N 89°50'21" W
74	48.50'	N 89°50'21" W	743	32.20'	N 89°50'21" W
75	81.00'	N 89°50'21" W	744	28.20'	N 89°50'21" W
76	142.50'	N 89°50'21" W	745	120.20'	N 89°50'21" W
77	142.50'	N 89°50'21" W	746	120.20'	N 89°50'21" W
78	84.20'	N 89°50'21" W	747	120.20'	N 89°50'21" W
79	84.20'	N 89°50'21" W	748	120.20'	N 89°50'21" W
80	188.20'	N 89°50'21" W	749	120.20'	N 89°50'21" W
81	188.20'	N 89°50'21" W	750	38.20'	N 89°50'21" W
82	32.20'	N 89°50'21" W	751	102.20'	N 89°50'21" W
83	32.20'	N 89°50'21" W	752	102.20'	N 89°50'21" W
84	32.20'	N 89°50'21" W	753	22.20'	N 89°50'21" W
85	32.20'	N 89°50'21" W	754	22.20'	N 89°50'21" W
86	32.20'	N 89°50'21" W	755	22.20'	N 89°50'21" W
87	32.20'	N 89°50'21" W	756	22.20'	N 89°50'21" W
88	32.20'	N 89°50'21" W	757	22.20'	N 89°50'21" W
89	32.20'	N 89°50'21" W	758	22.20'	N 89°50'21" W
90	32.20'	N 89°50'21" W	759	22.20'	N 89°50'21" W
91	32.20'	N 89°50'21" W	760	22.20'	N 89°50'21" W
92	32.20'	N 89°50'21" W	761	22.20'	N 89°50'21" W
93	32.20'	N 89°50'21" W	762	22.20'	N 89°50'21" W
94	32.20'	N 89°50'21" W	763	22.20'	N 89°50'21" W
95	32.20'	N 89°50'21" W	764	22.20'	N 89°50'21" W
96	32.20'	N 89°50'21" W	765	22.20'	N 89°50'21" W
97	32.20'	N 89°50'21" W	766	22.20'	N 89°50'21" W
98	32.20'	N 89°50'21" W	767	22.20'	N 89°50'21" W
99	32.20'	N 89°50'21" W	768	22.20'	N 89°50'21" W
100	32.20'	N 89°50'21" W	769	22.20'	N 89°50'21" W
101	32.20'	N 89°50'21" W	770	22.20'	N 89°50'21" W
102	32.20'	N 89°50'21" W	771	22.20'	N 89°50'21" W
103	32.20'	N 89°50'21" W	772	22.20'	N 89°50'21" W
104	32.20'	N 89°50'21" W	773	22.20'	N 89°50'21" W
105	32.20'	N 89°50'21" W	774	22.20'	N 89°50'21" W
106	32.20'	N 89°50'21" W	775	22.20'	N 89°50'21" W
107	32.20'	N 89°50'21" W	776	22.20'	N 89°50'21" W
108	32.20'	N 89°50'21" W	777	22.20'	N 89°50'21" W
109	32.20'	N 89°50'21" W	778	22.20'	N 89°50'21" W
110	32.20'	N 89°50'21" W	779	22.20'	N 89°50'21" W
111	32.20'	N 89°50'21" W	780	22.20'	N 89°50'21" W



REVISIONS

NO.	DATE	DESCRIPTION
1	08-12-01	REVISED PER CLIENT AND ATTORNEY COMMENTS
2	08-12-01	REVISED PER PROFESSIONAL SEAL & CLIENT & ATTORNEY COMMENTS
3	08-28-02	REVISED PER NEW COMPARISON FOR TITLE INSURANCE
4	03-05-02	REVISED PER NEW FIELD INSPECTION AND ATTORNEY COMMENTS
5	03-05-02	REVISED PER ATTORNEY COMMENTS
6	03-05-02	REVISED PER NEW COMPARISON SUPPLEMENTAL COMMENT AND NEW FIELD INSPECTION
7	08-23-02	REVISED PER NEW COMPARISON FOR TITLE INSURANCE
8	10-02-02	REVISED PER NEW COMPARISON SUPPLEMENTAL COMMENT AND NEW FIELD INSPECTION
9	12-19-02	REVISED PER NEW TITLE COMMITMENT AND NEW FIELD INSPECTION

LEGAL DESCRIPTION

BASIS OF BEARINGS

PREPARED FOR

PREPARED BY

ALTA/ACSM LAND TITLE SURVEY

SEE SHEET ONE FOR LEGAL DESCRIPTION

THE BEARINGS SHOWN HEREON ARE BASED ON THE CONTINENTAL NORTH AMERICAN DATUM BEING N 89°50'21" E AS PER RECORD OF SURVEY FILED IN BOOK 176, PAGE 10 AND AS PER RECORD OF SURVEY RECEIVED OF COUNTY OF LOS ANGELES, STATE OF CALIFORNIA.

HEWSON DEVELOPMENT CORPORATION
4576 G UNIVERSITY DRIVE, SUITE 265
PASADENA, CA 91104
PHONE: (480) 828-1773
FAX: (480) 828-1771

Thienes Engineering, Inc.
CIVIL ENGINEERING - LAND SURVEYING
14000 VALLEY VIEW AVENUE
LA BREA, CALIFORNIA 90639
IN 91001-0011 4077053-1113

1710 EAST SEPULVEDA BOULEVARD
CARSON
CALIFORNIA
DRAWN BY: DMH CHECKED BY: PCS SCALE: 1" = 50' DATE: AUGUST, 2001 J.N. BURRO SHEET 2 OF 4

SEE SHEET 1 FOR BOUNDARY ESTABLISHMENT, SURVEYORS' NOTES, TITLE NOTES, SURVEYORS' CERTIFICATE AND MONUMENT NOTES. SEE SHEETS 3 & 4 FOR 30' SCALE DETAIL MAP SHEETS. (SEE SHEET 1 FOR LEGAL DESCRIPTION)