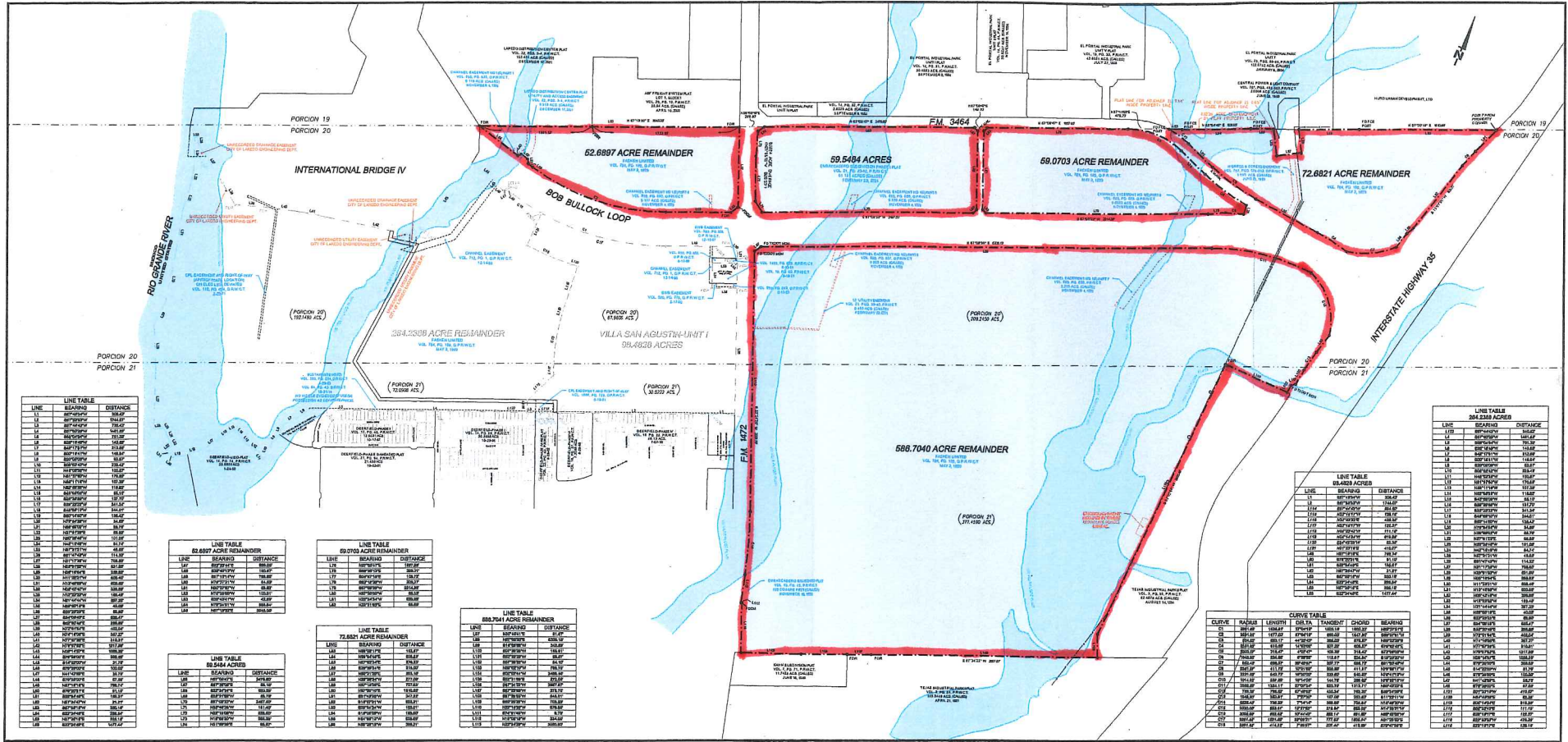


SURVEY MAP RG-6-2004-EMBFTZ

OF
830.6945 ACRES OF LAND
OUT OF

A 1530.61 ACRE PARCEL OF LAND CONVEYED FROM NORBERT J. DICKMAN AND ROBERT DICKSON TO FASKEN LIMITED AS RECORDED IN VOLUME 764, PAGE 186, OFFICIAL PUBLIC RECORDS OF WEBB COUNTY, TEXAS, BEING SITUATED IN PORCION 20, ABSTRACT 48, ORIGINAL GRANTEE BAUTISTA GARCIA AND PORCION 21, ABSTRACT 49, ORIGINAL GRANTEE LEONARDO GARCIA AND SURVEY 2415, F. AND I. FARIAS ORIGINAL GRANTEES, WEBB COUNTY, TEXAS.



LINE TABLE

LINE	BEARING	DISTANCE
L1	S89°50'00"W	30.00'
L2	S89°50'00"W	30.00'
L3	S89°50'00"W	30.00'
L4	S89°50'00"W	30.00'
L5	S89°50'00"W	30.00'
L6	S89°50'00"W	30.00'
L7	S89°50'00"W	30.00'
L8	S89°50'00"W	30.00'
L9	S89°50'00"W	30.00'
L10	S89°50'00"W	30.00'
L11	S89°50'00"W	30.00'
L12	S89°50'00"W	30.00'
L13	S89°50'00"W	30.00'
L14	S89°50'00"W	30.00'
L15	S89°50'00"W	30.00'
L16	S89°50'00"W	30.00'
L17	S89°50'00"W	30.00'
L18	S89°50'00"W	30.00'
L19	S89°50'00"W	30.00'
L20	S89°50'00"W	30.00'
L21	S89°50'00"W	30.00'
L22	S89°50'00"W	30.00'
L23	S89°50'00"W	30.00'
L24	S89°50'00"W	30.00'
L25	S89°50'00"W	30.00'
L26	S89°50'00"W	30.00'
L27	S89°50'00"W	30.00'
L28	S89°50'00"W	30.00'
L29	S89°50'00"W	30.00'
L30	S89°50'00"W	30.00'

LINE TABLE
62.6887 ACRE REMAINDER

LINE	BEARING	DISTANCE
L1	S89°50'00"W	30.00'
L2	S89°50'00"W	30.00'
L3	S89°50'00"W	30.00'
L4	S89°50'00"W	30.00'
L5	S89°50'00"W	30.00'
L6	S89°50'00"W	30.00'
L7	S89°50'00"W	30.00'
L8	S89°50'00"W	30.00'
L9	S89°50'00"W	30.00'
L10	S89°50'00"W	30.00'
L11	S89°50'00"W	30.00'
L12	S89°50'00"W	30.00'
L13	S89°50'00"W	30.00'
L14	S89°50'00"W	30.00'
L15	S89°50'00"W	30.00'
L16	S89°50'00"W	30.00'
L17	S89°50'00"W	30.00'
L18	S89°50'00"W	30.00'
L19	S89°50'00"W	30.00'
L20	S89°50'00"W	30.00'
L21	S89°50'00"W	30.00'
L22	S89°50'00"W	30.00'
L23	S89°50'00"W	30.00'
L24	S89°50'00"W	30.00'
L25	S89°50'00"W	30.00'
L26	S89°50'00"W	30.00'
L27	S89°50'00"W	30.00'
L28	S89°50'00"W	30.00'
L29	S89°50'00"W	30.00'
L30	S89°50'00"W	30.00'

LINE TABLE
59.0703 ACRE REMAINDER

LINE	BEARING	DISTANCE
L1	S89°50'00"W	30.00'
L2	S89°50'00"W	30.00'
L3	S89°50'00"W	30.00'
L4	S89°50'00"W	30.00'
L5	S89°50'00"W	30.00'
L6	S89°50'00"W	30.00'
L7	S89°50'00"W	30.00'
L8	S89°50'00"W	30.00'
L9	S89°50'00"W	30.00'
L10	S89°50'00"W	30.00'
L11	S89°50'00"W	30.00'
L12	S89°50'00"W	30.00'
L13	S89°50'00"W	30.00'
L14	S89°50'00"W	30.00'
L15	S89°50'00"W	30.00'
L16	S89°50'00"W	30.00'
L17	S89°50'00"W	30.00'
L18	S89°50'00"W	30.00'
L19	S89°50'00"W	30.00'
L20	S89°50'00"W	30.00'
L21	S89°50'00"W	30.00'
L22	S89°50'00"W	30.00'
L23	S89°50'00"W	30.00'
L24	S89°50'00"W	30.00'
L25	S89°50'00"W	30.00'
L26	S89°50'00"W	30.00'
L27	S89°50'00"W	30.00'
L28	S89°50'00"W	30.00'
L29	S89°50'00"W	30.00'
L30	S89°50'00"W	30.00'

LINE TABLE
588.7040 ACRE REMAINDER

LINE	BEARING	DISTANCE
L1	S89°50'00"W	30.00'
L2	S89°50'00"W	30.00'
L3	S89°50'00"W	30.00'
L4	S89°50'00"W	30.00'
L5	S89°50'00"W	30.00'
L6	S89°50'00"W	30.00'
L7	S89°50'00"W	30.00'
L8	S89°50'00"W	30.00'
L9	S89°50'00"W	30.00'
L10	S89°50'00"W	30.00'
L11	S89°50'00"W	30.00'
L12	S89°50'00"W	30.00'
L13	S89°50'00"W	30.00'
L14	S89°50'00"W	30.00'
L15	S89°50'00"W	30.00'
L16	S89°50'00"W	30.00'
L17	S89°50'00"W	30.00'
L18	S89°50'00"W	30.00'
L19	S89°50'00"W	30.00'
L20	S89°50'00"W	30.00'
L21	S89°50'00"W	30.00'
L22	S89°50'00"W	30.00'
L23	S89°50'00"W	30.00'
L24	S89°50'00"W	30.00'
L25	S89°50'00"W	30.00'
L26	S89°50'00"W	30.00'
L27	S89°50'00"W	30.00'
L28	S89°50'00"W	30.00'
L29	S89°50'00"W	30.00'
L30	S89°50'00"W	30.00'

LINE TABLE
72.6821 ACRE REMAINDER

LINE	BEARING	DISTANCE
L1	S89°50'00"W	30.00'
L2	S89°50'00"W	30.00'
L3	S89°50'00"W	30.00'
L4	S89°50'00"W	30.00'
L5	S89°50'00"W	30.00'
L6	S89°50'00"W	30.00'
L7	S89°50'00"W	30.00'
L8	S89°50'00"W	30.00'
L9	S89°50'00"W	30.00'
L10	S89°50'00"W	30.00'
L11	S89°50'00"W	30.00'
L12	S89°50'00"W	30.00'
L13	S89°50'00"W	30.00'
L14	S89°50'00"W	30.00'
L15	S89°50'00"W	30.00'
L16	S89°50'00"W	30.00'
L17	S89°50'00"W	30.00'
L18	S89°50'00"W	30.00'
L19	S89°50'00"W	30.00'
L20	S89°50'00"W	30.00'
L21	S89°50'00"W	30.00'
L22	S89°50'00"W	30.00'
L23	S89°50'00"W	30.00'
L24	S89°50'00"W	30.00'
L25	S89°50'00"W	30.00'
L26	S89°50'00"W	30.00'
L27	S89°50'00"W	30.00'
L28	S89°50'00"W	30.00'
L29	S89°50'00"W	30.00'
L30	S89°50'00"W	30.00'

CURVE TABLE

CURVE	RADIUS	LENGTH	DIR.	TANGENT	CHORD	BEARING
C1	100.00'	100.00'	90°	100.00'	100.00'	S0°00'00"W
C2	100.00'	100.00'	90°	100.00'	100.00'	S0°00'00"W
C3	100.00'	100.00'	90°	100.00'	100.00'	S0°00'00"W
C4	100.00'	100.00'	90°	100.00'	100.00'	S0°00'00"W
C5	100.00'	100.00'	90°	100.00'	100.00'	S0°00'00"W
C6	100.00'	100.00'	90°	100.00'	100.00'	S0°00'00"W
C7	100.00'	100.00'	90°	100.00'	100.00'	S0°00'00"W
C8	100.00'	100.00'	90°	100.00'	100.00'	S0°00'00"W
C9	100.00'	100.00'	90°	100.00'	100.00'	S0°00'00"W
C10	100.00'	100.00'	90°	100.00'	100.00'	S0°00'00"W
C11	100.00'	100.00'	90°	100.00'	100.00'	S0°00'00"W
C12	100.00'	100.00'	90°	100.00'	100.00'	S0°00'00"W
C13	100.00'	100.00'	90°	100.00'	100.00'	S0°00'00"W
C14	100.00'	100.00'	90°	100.00'	100.00'	S0°00'00"W
C15	100.00'	100.00'	90°	100.00'	100.00'	S0°00'00"W
C16	100.00'	100.00'	90°	100.00'	100.00'	S0°00'00"W
C17	100.00'	100.00'	90°	100.00'	100.00'	S0°00'00"W
C18	100.00'	100.00'	90°	100.00'	100.00'	S0°00'00"W
C19	100.00'	100.00'	90°	100.00'	100.00'	S0°00'00"W
C20	100.00'	100.00'	90°	100.00'	100.00'	S0°00'00"W

NOTES:
LOCATIONS OF UTILITIES SHOWN ON THIS SURVEY SHALL NOT BE USED FOR CONSTRUCTION PURPOSES. CONSTRUCTION CONTRACTORS SHALL STILL BE REQUIRED TO HAVE REQUESTS FOR ACTUAL LOCATIONS OF UTILITIES TO RESPECTIVE UTILITY COMPANIES AND PUBLIC UTILITIES DEPARTMENTS IN ACCORDANCE WITH APPLICABLE FEDERAL, STATE AND LOCAL REQUIREMENTS.
BY GRAPHICALLY PLOTTING, THIS PARCEL WAS DETERMINED TO BE PARTIALLY WITHIN A 100 YEAR FREQUENCY FLOOD ZONE AS PER FLOOD INSURANCE RATE MAPS FOR WEBB COUNTY, TEXAS COMMUNITY PANELS 481059 0648B AND 481059 0650D, EFFECTIVE DATE OF MAY 17, 1992.

LEGEND

- EXISTING BOUNDARY LINE
- 1/4" = 1' (SEE ALSO BOUNDARY MAP DATED 1997)
- 1/8" = 1' (SEE ALSO BOUNDARY MAP DATED 1997)
- 1/16" = 1' (SEE ALSO BOUNDARY MAP DATED 1997)
- 1/32" = 1' (SEE ALSO BOUNDARY MAP DATED 1997)
- 1/64" = 1' (SEE ALSO BOUNDARY MAP DATED 1997)
- 1/128" = 1' (SEE ALSO BOUNDARY MAP DATED 1997)
- 1/256" = 1' (SEE ALSO BOUNDARY MAP DATED 1997)
- 1/512" = 1' (SEE ALSO BOUNDARY MAP DATED 1997)
- 1/1024" = 1' (SEE ALSO BOUNDARY MAP DATED 1997)
- 1/2048" = 1' (SEE ALSO BOUNDARY MAP DATED 1997)
- 1/4096" = 1' (SEE ALSO BOUNDARY MAP DATED 1997)
- 1/8192" = 1' (SEE ALSO BOUNDARY MAP DATED 1997)
- 1/16384" = 1' (SEE ALSO BOUNDARY MAP DATED 1997)
- 1/32768" = 1' (SEE ALSO BOUNDARY MAP DATED 1997)
- 1/65536" = 1' (SEE ALSO BOUNDARY MAP DATED 1997)
- 1/131072" = 1' (SEE ALSO BOUNDARY MAP DATED 1997)
- 1/262144" = 1' (SEE ALSO BOUNDARY MAP DATED 1997)
- 1/524288" = 1' (SEE ALSO BOUNDARY MAP DATED 1997)
- 1/1048576" = 1' (SEE ALSO BOUNDARY MAP DATED 1997)
- 1/2097152" = 1' (SEE ALSO BOUNDARY MAP DATED 1997)
- 1/4194304" = 1' (SEE ALSO BOUNDARY MAP DATED 1997)
- 1/8388608" = 1' (SEE ALSO BOUNDARY MAP DATED 1997)
- 1/16777216" = 1' (SEE ALSO BOUNDARY MAP DATED 1997)
- 1/33554432" = 1' (SEE ALSO BOUNDARY MAP DATED 1997)
- 1/67108864" = 1' (SEE ALSO BOUNDARY MAP DATED 1997)
- 1/134217728" = 1' (SEE ALSO BOUNDARY MAP DATED 1997)
- 1/268435456" = 1' (SEE ALSO BOUNDARY MAP DATED 1997)
- 1/536870912" = 1' (SEE ALSO BOUNDARY MAP DATED 1997)
- 1/1073741824" = 1' (SEE ALSO BOUNDARY MAP DATED 1997)
- 1/2147483648" = 1' (SEE ALSO BOUNDARY MAP DATED 1997)
- 1/4294967296" = 1' (SEE ALSO BOUNDARY MAP DATED 1997)
- 1/8589934592" = 1' (SEE ALSO BOUNDARY MAP DATED 1997)
- 1/17179869184" = 1' (SEE ALSO BOUNDARY MAP DATED 1997)
- 1/34359738368" = 1' (SEE ALSO BOUNDARY MAP DATED 1997)
- 1/68719476736" = 1' (SEE ALSO BOUNDARY MAP DATED 1997)
- 1/137438953472" = 1' (SEE ALSO BOUNDARY MAP DATED 1997)
- 1/274877906944" = 1' (SEE ALSO BOUNDARY MAP DATED 1997)
- 1/549755813888" = 1' (SEE ALSO BOUNDARY MAP DATED 1997)
- 1/1099511627776" = 1' (SEE ALSO BOUNDARY MAP DATED 1997)
- 1/2199023255552" = 1' (SEE ALSO BOUNDARY MAP DATED 1997)
- 1/4398046511104" = 1' (SEE ALSO BOUNDARY MAP DATED 1997)
- 1/8796093022208" = 1' (SEE ALSO BOUNDARY MAP DATED 1997)
- 1/17592186044416" = 1' (SEE ALSO BOUNDARY MAP DATED 1997)
- 1/35184372088832" = 1' (SEE ALSO BOUNDARY MAP DATED 1997)
- 1/70368744177664" = 1' (SEE ALSO BOUNDARY MAP DATED 1997)
- 1/140737488355328" = 1' (SEE ALSO BOUNDARY MAP DATED 1997)
- 1/281474976710656" = 1' (SEE ALSO BOUNDARY MAP DATED 1997)
- 1/562949953421312" = 1' (SEE ALSO BOUNDARY MAP DATED 1997)
- 1/1125899906842624" = 1' (SEE ALSO BOUNDARY MAP DATED 1997)
- 1/2251799813685248" = 1' (SEE ALSO BOUNDARY MAP DATED 1997)
- 1/4503599627370496" = 1' (SEE ALSO BOUNDARY MAP DATED 1997)
- 1/9007199254740992" = 1' (SEE ALSO BOUNDARY MAP DATED 1997)
- 1/18014398509481984" = 1' (SEE ALSO BOUNDARY MAP DATED 1997)
- 1/36028797018963968" = 1' (SEE ALSO BOUNDARY MAP DATED 1997)
- 1/72057594037927936" = 1' (SEE ALSO BOUNDARY MAP DATED 1997)
- 1/144115188075855872" = 1' (SEE ALSO BOUNDARY MAP DATED 1997)
- 1/288230376151711744" = 1' (SEE ALSO BOUNDARY MAP DATED 1997)
- 1/576460752303423488" = 1' (SEE ALSO BOUNDARY MAP DATED 1997)
- 1/1152921504606846976" = 1' (SEE ALSO BOUNDARY MAP DATED 1997)
- 1/2305843009213693952" = 1' (SEE ALSO BOUNDARY MAP DATED 1997)
- 1/4611686018427387904" = 1' (SEE ALSO BOUNDARY MAP DATED 1997)
- 1/9223372036854775808" = 1' (SEE ALSO BOUNDARY MAP DATED 1997)
- 1/18446744073709551616" = 1' (SEE ALSO BOUNDARY MAP DATED 1997)
- 1/36893488147419103232" = 1' (SEE ALSO BOUNDARY MAP DATED 1997)
- 1/73786976294838206464" = 1' (SEE ALSO BOUNDARY MAP DATED 1997)
- 1/147573952589676412928" = 1' (SEE ALSO BOUNDARY MAP DATED 1997)
- 1/295147905179352825856" = 1' (SEE ALSO BOUNDARY MAP DATED 1997)
- 1/590295810358705651712" = 1' (SEE ALSO BOUNDARY MAP DATED 1997)
- 1/1180591620717411303424" = 1' (SEE ALSO BOUNDARY MAP DATED 1997)
- 1/2361183241434822606848" = 1' (SEE ALSO BOUNDARY MAP DATED 1997)
- 1/4722366482869645213696" = 1' (SEE ALSO BOUNDARY MAP DATED 1997)
- 1/9444732965739290427392" = 1' (SEE ALSO BOUNDARY MAP DATED 1997)
- 1/18889465931478580854784" = 1' (SEE ALSO BOUNDARY MAP DATED 1997)
- 1/37778931862957161709568" = 1' (SEE ALSO BOUNDARY MAP DATED 1997)
- 1/75557863725914323419136" = 1' (SEE ALSO BOUNDARY MAP DATED 1997)
- 1/151115727451828646838272" = 1' (SEE ALSO BOUNDARY MAP DATED 1997)
- 1/302231454903657293676544" = 1' (SEE ALSO BOUNDARY MAP DATED 1997)
- 1/604462909807314587353088" = 1' (SEE ALSO BOUNDARY MAP DATED 1997)
- 1/1208925819614629174706176" = 1' (SEE ALSO BOUNDARY MAP DATED 1997)
- 1/2417851639229258349412352" = 1' (SEE ALSO BOUNDARY MAP DATED 1997)
- 1/4835703278458516698824704" = 1' (SEE ALSO BOUNDARY MAP DATED 1997)
- 1/9671406556917033397649408" = 1' (SEE ALSO BOUNDARY MAP DATED 1997)
- 1/19342813113834066795298816" = 1' (SEE ALSO BOUNDARY MAP DATED 1997)
- 1/38685626227668133590597632" = 1' (SEE ALSO BOUNDARY MAP DATED 1997)
- 1/77371252455336267181195264" = 1' (SEE ALSO BOUNDARY MAP DATED 1997)
- 1/15474250491067253436239056" = 1' (SEE ALSO BOUNDARY MAP DATED 1997)
- 1/30948500982134506872478112" = 1' (SEE ALSO BOUNDARY MAP DATED 1997)
- 1/61897001964269013744956224" = 1' (SEE ALSO BOUNDARY MAP DATED 1997)
- 1/123794003928538027489924448" = 1' (SEE ALSO BOUNDARY MAP DATED 1997)
- 1/247588007857076054979848896" = 1' (SEE ALSO BOUNDARY MAP DATED 1997)
- 1/495176015714152109959697792" = 1' (SEE ALSO BOUNDARY MAP DATED 1997)
- 1/990352031428304219919395584" = 1' (SEE ALSO BOUNDARY MAP DATED 1997)
- 1/1980704062856608439838791168" = 1' (SEE ALSO BOUNDARY MAP DATED 1997)
- 1/3961408125713216879677582336" = 1' (SEE ALSO BOUNDARY MAP DATED 1997)
- 1/7922816251426433759355164672" = 1' (SEE ALSO BOUNDARY MAP DATED 1997)
- 1/15845632502852867518710329344" = 1' (SEE ALSO BOUNDARY MAP DATED 1997)
- 1/316912650057057350374206