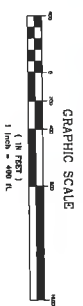
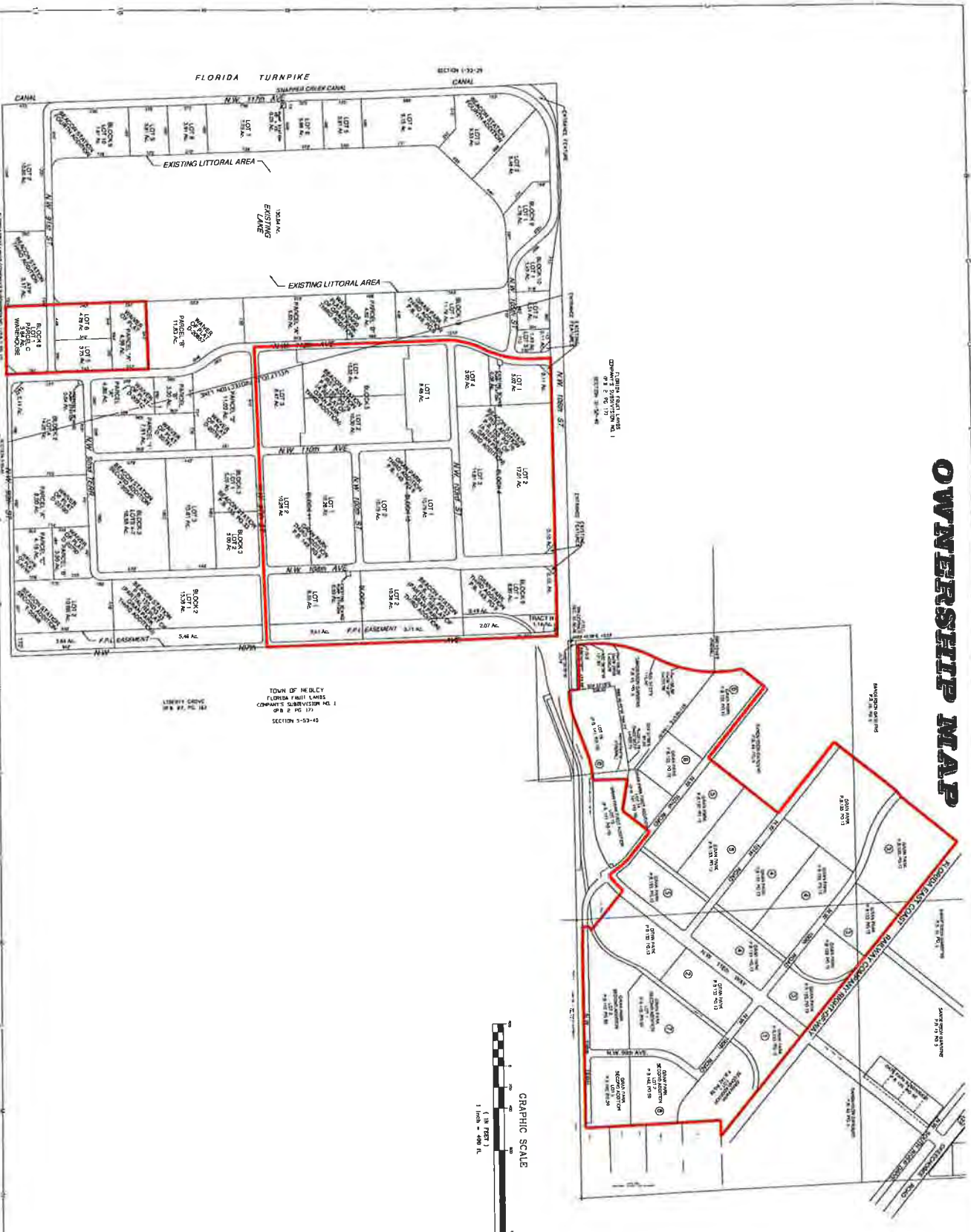
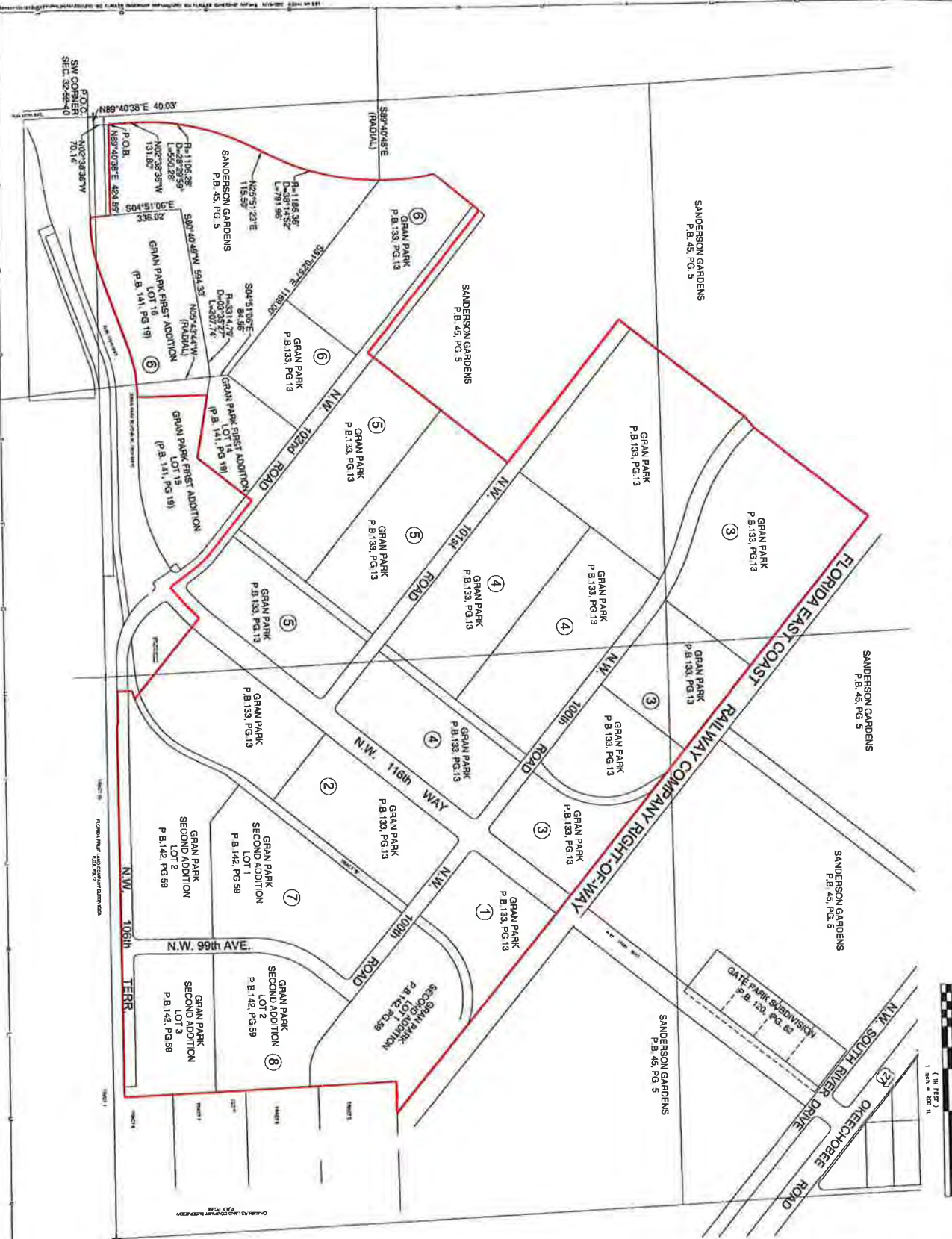


OWNERSHIP MAP



TITLE SHEET 1 OF 1 SHEET	OWNERSHIP MAP	MIAMI-DADE COUNTY, FLORIDA	LUDOVICI & ORANGE CONSULTING ENGINEERS, INC. 129 PALERMO AVENUE, CORAL GABLES, FLORIDA 33134 • 304449-1200 LD 1012	DATE	REVISIONS	BY
	BEACON STATION	SEC. 32-52-40				

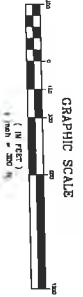
OWNERSHIP MAP



PREPARED BY: LUDOVICI & ORANGE CONSULTING ENGINEERS, INC. 320 PALERMO AVENUE, CORAL GABLES, FLORIDA 33134 • 305/448-1000 • LR 1012	OWNERSHIP MAP BEACON STATION	MIAMI-DADE COUNTY, FLORIDA SEC. 32-52-40	GRAPHIC SCALE (IN FEET) 1" = 500'	NORTH
	REVISIONS NO. DATE	DATE	DRAWN BY: CHECKED BY: SCALE IN FEET: DATE: 1-29-2011 SHEET: 1 OF 2 SHEETS	REVISIONS NO. DATE

OWNERSHIP MAP

FLORIDA FRUIT LANDS
CORPORATION'S SUBDIVISION NO. 1
SECTION 6-53-40



FLORIDA FRUIT LANDS
COMPANY'S SUBDIVISION NO. 1
SECTION 7 53-40

NO	DATE	REVISIONS	OWNERSHIP MAP		MIAMI-DADE COUNTY, FLORIDA	LUDOVICI & ORANGE CONSULTING ENGINEERS, INC. <small>323 PALERMO AVENUE CORAL GABLES FLORIDA 33134 • 305/448-1800 • LR 1012</small>
			FLAGLER STATION		SEC. 6-53-40	