

SUBDIVIDED BY  
IMMANUEL G. BERGE, JR.  
IN 1986

U.  
No. 1  
DEPENDENT RESURVEY  
OF LOT 21 I.  
LOTS 34 - 36  
DESIGNATED  
AND THE DEPENDENT RESURVEY  
A PORTION OF LOT 19

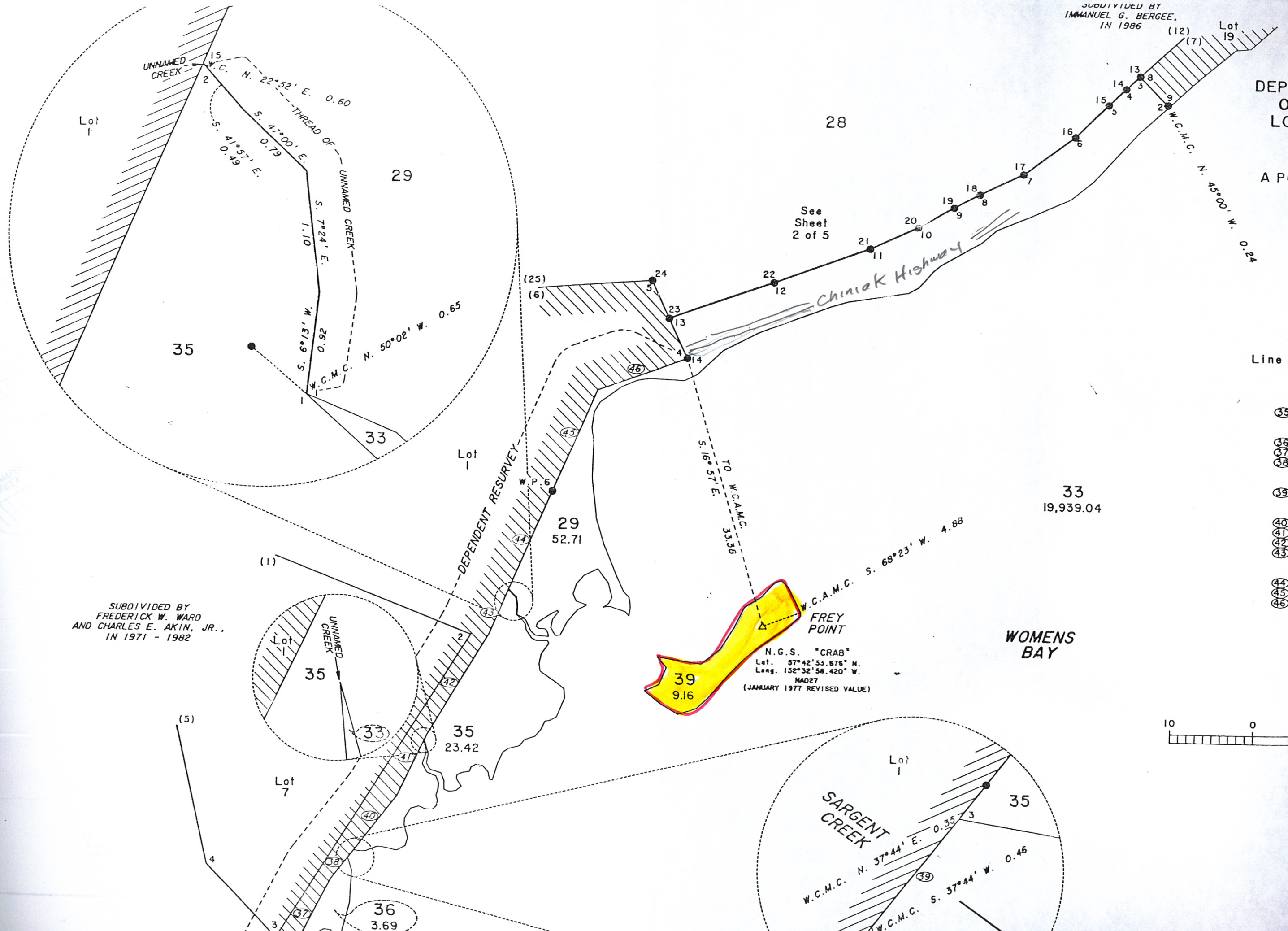
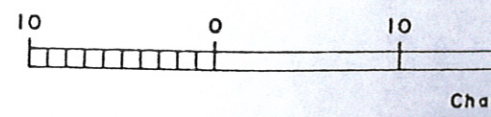
A PORTION OF  
LINE 4-  
Identical  
Line 1-2, Lot 36,  
and Line 1-2

- (35) Across Ru N. 19°11'
- (36) Lo N. 19°11'
- (37) N. 27°02'
- (38) N. 37°44'
- (39) Across Sai N. 37°44'
- (40) Lo N. 37°44'
- (41) N. 25°23'
- (42) N. 30°49'
- (43) N. 22°52'
- (44) Lo N. 22°52'
- (45) N. 22°52'
- (46) N. 69°52'

SUBDIVIDED BY  
FREDERICK W. WARD  
AND CHARLES E. AKIN, JR.,  
IN 1971 - 1982

N.G.S. "CRAB"  
Lat. 57°42'53.676" N.  
Long. 152°32'58.420" W.  
MAD27  
(JANUARY 1977 REVISED VALUE)

WOMENS BAY



See  
Sheet  
2 of 5

Chiniak Highway

TO W.C.A.M.C.  
S. 16°57' E. 33.38

W.C.A.M.C. S. 68°23' W. 4.88

FREY POINT

SARGENT CREEK

W.C.M.C. N. 37°44' E. 0.3573  
W.C.M.C. S. 37°44' W. 0.46