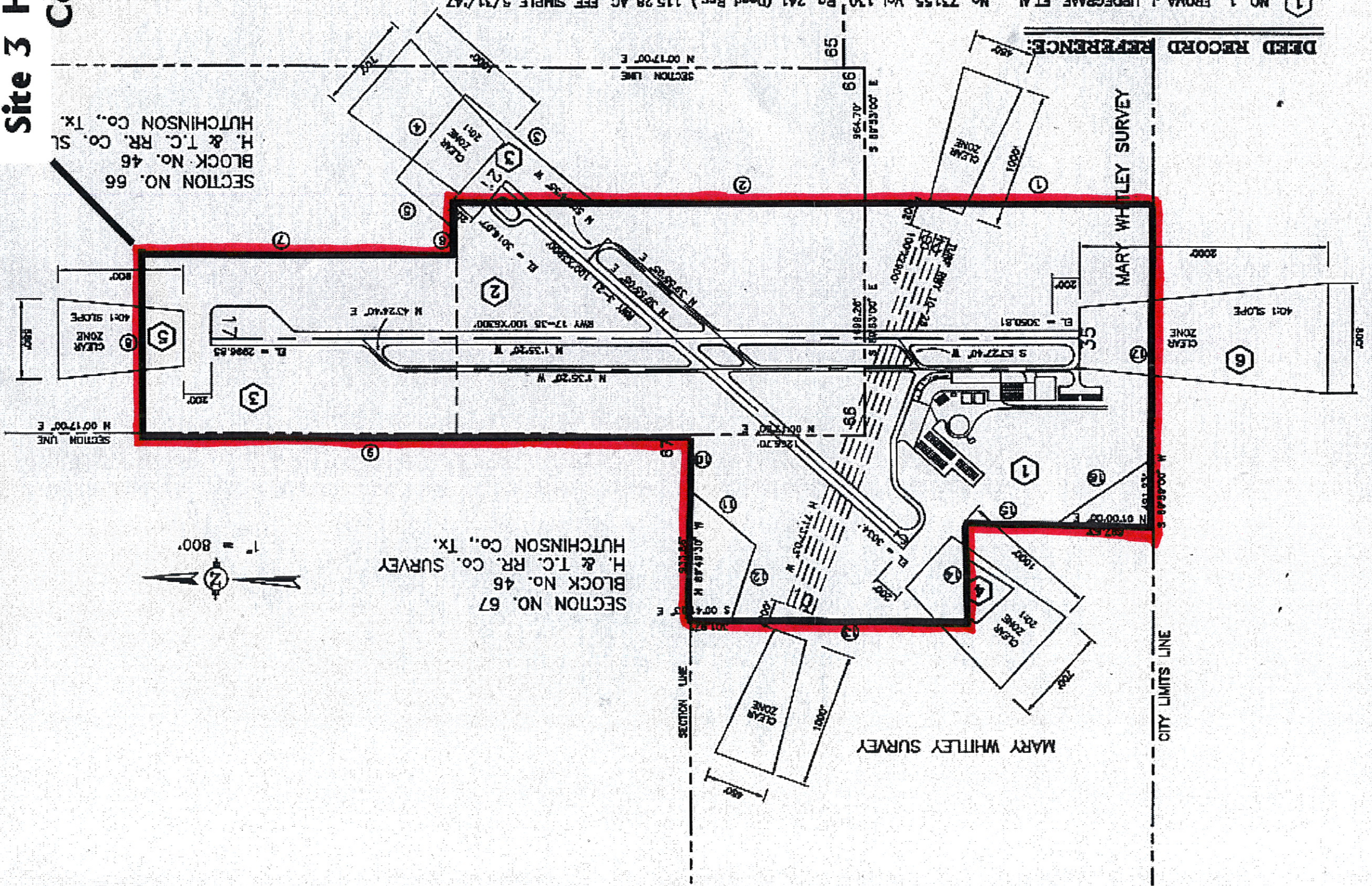
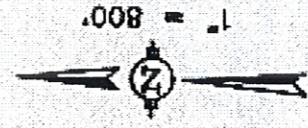


Site 3 Hutchinson Co. Airport

SECTION NO. 66
BLOCK NO. 46
H. & T.C. RR. CO. SL
HUTCHINSON CO., TX.

SECTION NO. 67
BLOCK NO. 46
H. & T.C. RR. CO. SURVEY
HUTCHINSON CO., TX.



DEED RECORD REFERENCE:

NO. 1 FROM J. UPDEGRAFF, ET AL. NO. 73155, Vol 130, Pg. 241 (Deed Rec.) 115.28 AC. FEE SIMPLE 5/31/47
 NO. 2 M. & M. CATTLE COMPANY No. 72402, Vol 129 Pg. 38 (Deed Rec.) 161.59 AC. FEE SIMPLE 8/05/49
 NO. 3 JOHNSON INTERESTS Vol 322, Pg. 382 (DEED REC) 68.64 AC. FEE SIMPLE 6/28/65
 NO. 3 JOHNSON INTERESTS Vol 322, Pg. 382 (DEED REC) 13.82 AC. FEE SIMPLE 6/28/65
 NO. 4 M. & M. CATTLE CO. Vol 319, Pg. 278 (DEED REC) 2.028 AC. CLR. ZONE ESMT 5/20/65
 NO. 5 VARIOUS GRANTORS Vol 322, Pg. 235-628 (DEED REC) 7.095 AC. CLR. ZONE EASEMT 6/06/65
 NO. 6 VARIOUS GRANTORS Vol 322, Pg. 235 THRU 626 (DEED REC) 22.055 AC. CLR. ZONE EASEMT 6/20/65

- ① NO. 1 FROM J. UPDEGRAFF, ET AL. NO. 73155, Vol 130, Pg. 241 (Deed Rec.) 115.28 AC. FEE SIMPLE 5/31/47
- ② NO. 2 M. & M. CATTLE COMPANY No. 72402, Vol 129 Pg. 38 (Deed Rec.) 161.59 AC. FEE SIMPLE 8/05/49
- ③ NO. 3 JOHNSON INTERESTS Vol 322, Pg. 382 (DEED REC) 68.64 AC. FEE SIMPLE 6/28/65
- ③ NO. 3 JOHNSON INTERESTS Vol 322, Pg. 382 (DEED REC) 13.82 AC. FEE SIMPLE 6/28/65
- ④ NO. 4 M. & M. CATTLE CO. Vol 319, Pg. 278 (DEED REC) 2.028 AC. CLR. ZONE ESMT 5/20/65
- ⑤ NO. 5 VARIOUS GRANTORS Vol 322, Pg. 235-628 (DEED REC) 7.095 AC. CLR. ZONE EASEMT 6/06/65
- ⑥ NO. 6 VARIOUS GRANTORS Vol 322, Pg. 235 THRU 626 (DEED REC) 22.055 AC. CLR. ZONE EASEMT 6/20/65