

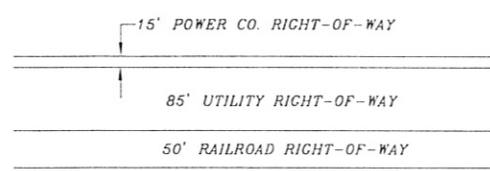
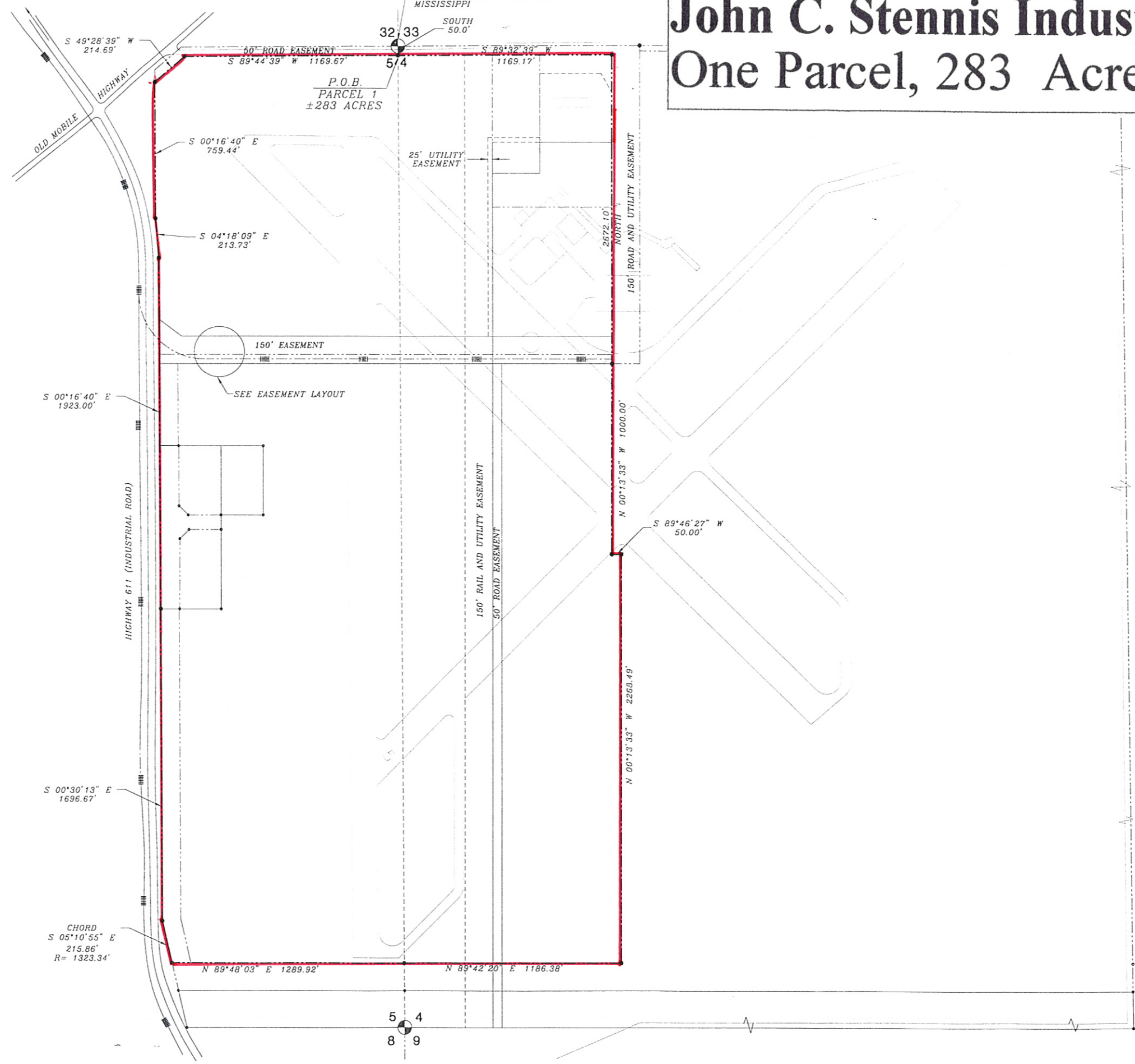
Jackson County John C. Stennis Industrial Park One Parcel, 283 Acres Total

TO U.S.
HIGHWAY 90

CONCRETE MONUMENT
NW CORNER OF SECTION 4
T8S, R5W, JACKSON COUNTY,
MISSISSIPPI

P.O.B.
PARCEL 1
±283 ACRES

SCALE: 1" = 300'



EASEMENT LAYOUT
NTS

JOHN C. STENNIS
INDUSTRIAL PARK
PASCAGOULA, MISSISSIPPI

COMPTON ENGINEERING, P.A.
CONSULTING ENGINEERS
Pascagoula, Mississippi
Phone: (601) 762-3970
Fax: (601) 769-9079



JACKSON COUNTY ECONOMIC DEVELOPMENT
AVAILABLE LANDS AT THE JOHN C.
STENNIS INDUSTRIAL PARK

SCALE:	1" = 300'
DWG. NO.:	G-799
JOB NO.:	9596
DATE:	1/28/97
DSGN.:	N/A
DWG. BY:	M.G. HILL
CHK.:	A.E. MASTERS
APVD.:	A.E. MASTERS

VERIFY SCALED
DRAWING IS ONE INCH ON
IF NOT ONE INCH ON
SCALE INCLUDING
SCALE