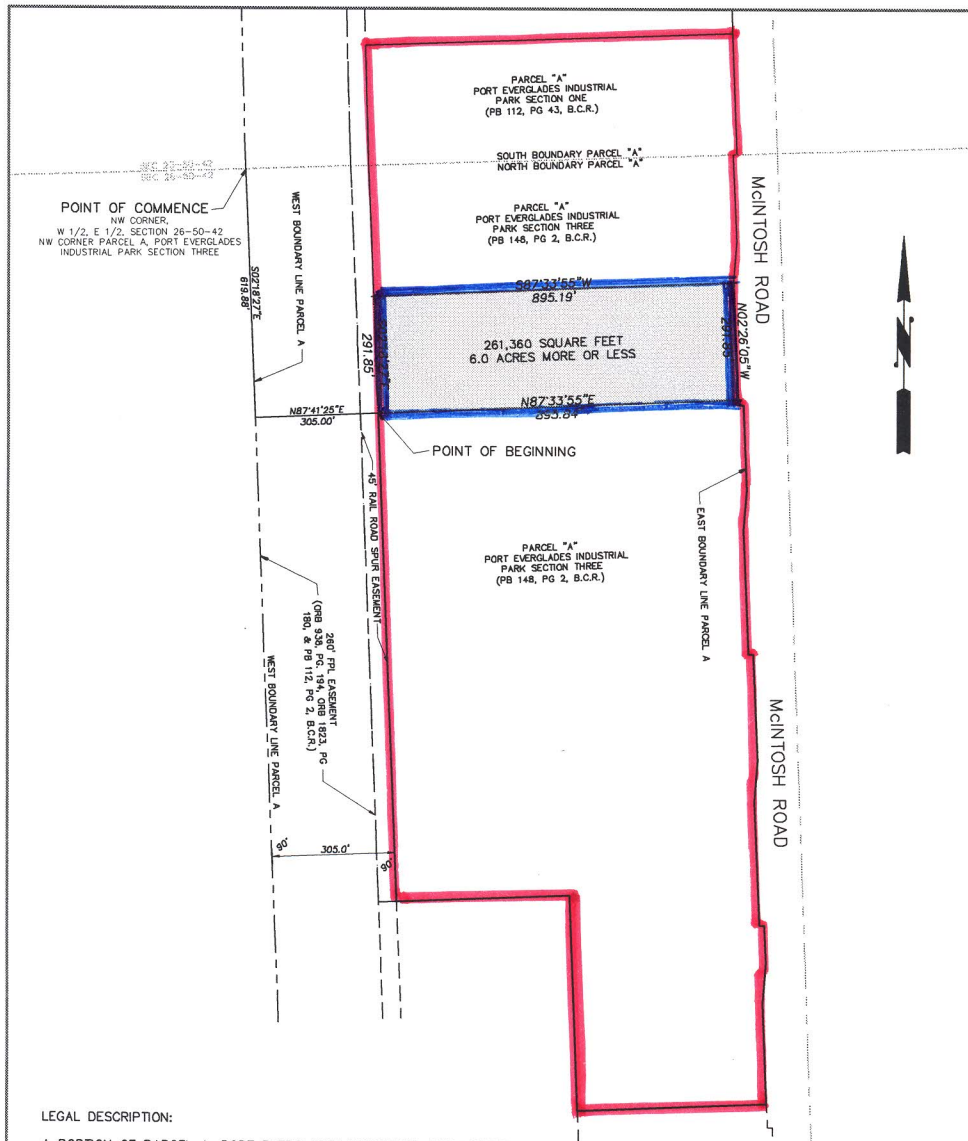


FTZ#25 Site 1



POINT OF COMMENCEMENT
NW CORNER
NW 1/2, E 1/2, SECTION 26-50-42
CORNER PARCEL A, PORT EVERGLADES
INDUSTRIAL PARK SECTION THREE

PARCEL "A"
PORT EVERGLADES INDUSTRIAL
PARK SECTION THREE
(PB 148, PG 2, B.C.R.)

PARCEL "A"
PORT EVERGLADES INDUSTRIAL
PARK SECTION THREE
(PB 148, PG 2, B.C.R.)

LEGAL DESCRIPTION:

A PORTION OF PARCEL A, PORT EVERGLADES INDUSTRIAL PARK SECTION THREE, ACCORDING TO THE PLAT THEREOF, AS RECORDED IN PLAT BOOK 148, PAGE 2, OF THE PUBLIC RECORDS OF BROWARD COUNTY, FLORIDA, DESCRIBED AS FOLLOWS:

COMMENCE AT THE NORTHWEST CORNER OF SAID PARCEL A, PORT EVERGLADES INDUSTRIAL PARK SECTION THREE; THENCE SOUTH 02°18'27" EAST, ALONG THE WEST BOUNDARY LINE OF SAID PARCEL A, A DISTANCE OF 619.88 FEET; THENCE NORTH 87°41'25" EAST, A DISTANCE OF 305.00 FEET TO A POINT ON THE EAST LINE OF A 45 FOOT RAIL ROAD SPUR EASEMENT, AS SHOWN ON CRAVEN, THOMPSON & ASSOCIATES, INC. DRAWING OF A 50 ACRE PARCEL, DRAWING NUMBER 97-0081 AND DATED 7-15-02, AND BEING THE POINT OF BEGINNING OF THIS DESCRIPTION; THENCE NORTH 87°33'55" EAST, A DISTANCE OF 895.84 FEET TO A POINT ON THE EAST BOUNDARY LINE OF SAID PARCEL A; THENCE NORTH 02°26'05" WEST, ALONG THE SAID EAST LINE OF PARCEL A, A DISTANCE OF 291.85 FEET; THENCE SOUTH 87°33'55" WEST, A DISTANCE OF 895.19 FEET TO A POINT ON THE EAST LINE OF SAID 45 FOOT RAIL ROAD SPUR EASEMENT; THENCE SOUTH 02°18'27" EAST, ALONG THE EAST LINE OF SAID RAIL ROAD SPUR EASEMENT A DISTANCE OF 291.85 FEET TO THE POINT OF BEGINNING.

SAID LANDS SITUATE IN THE CITY OF HOLLYWOOD, BROWARD COUNTY, FLORIDA. CONTAINING 261,360 SQUARE FEET OR 6.0 ACRES, MORE OR LESS.

NOTES:

1. THIS SKETCH OF DESCRIPTION DOES NOT REPRESENT A BOUNDARY SURVEY.

5. BEARINGS SHOWN HEREON ARE BASED ON AN ASSUMED MERIDIAN. THE WEST BOUNDARY OF PARCEL A, PORT EVERGLADES INDUSTRIAL PARK SECTION THREE, BEARS SOUTH 02°18'27" EAST.

7. FOR CLARITY PURPOSES THE OPENINGS AND NON VEHICULAR ACCESS LINES ALONG WITH ALL EASEMENTS EFFECTING THIS SKETCH OF DESCRIPTION ARE NOT SHOWN HEREON, REFER TO "PORT EVERGLADES INDUSTRIAL PARK SECTION THREE", PLAT BOOK 148, PG. 2, B.C.R. FOR THIS INFORMATION.

Parcel C

3401 McIntosh Road

BROWARD COUNTY		PORT EVERGLADES DEPARTMENT Hollywood/ Ft. Lauderdale/ Dania	
PROJECT: SKETCH OF DESCRIPTION FOREIGN TRADE ZONE 6.0 ACRE LAND SWAP			
DESIGNED:	DRAWN: MTB	CHECKED:	DRAWING No: 2009 S 5000
DATE: 06-30-09	SCALE: 1"=300'	CADD FILE:	SHEET: 1 OF: 1