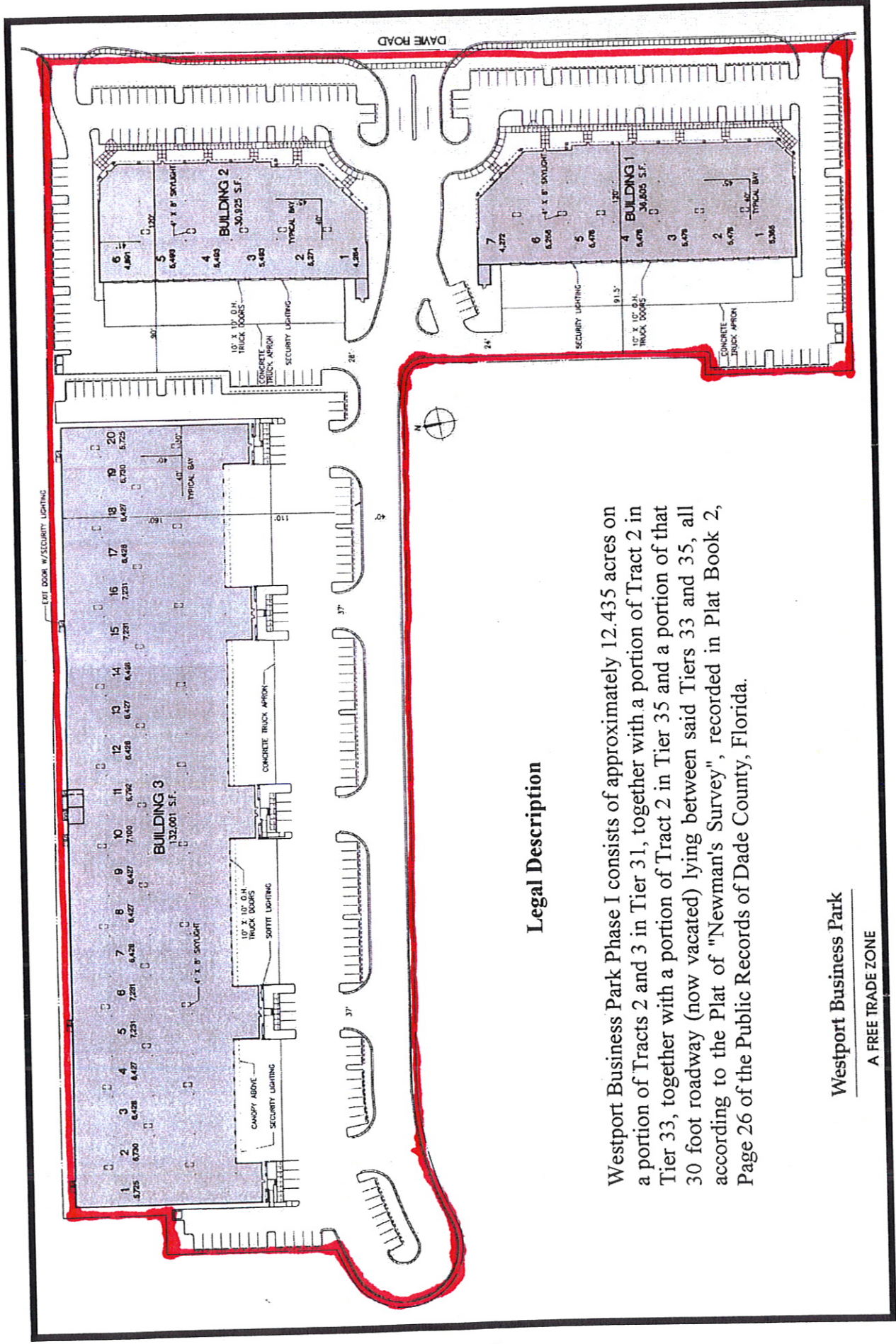


**Westport Business Park
2501, 2525, 2551 Davie Road
Davie, Broward County, Florida**



Legal Description

Westport Business Park Phase I consists of approximately 12.435 acres on a portion of Tracts 2 and 3 in Tier 31, together with a portion of Tract 2 in Tier 33, together with a portion of Tract 2 in Tier 35 and a portion of that 30 foot roadway (now vacated) lying between said Tiers 33 and 35, all according to the Plat of "Newman's Survey", recorded in Plat Book 2, Page 26 of the Public Records of Dade County, Florida.

Westport Business Park
A FREE TRADE ZONE