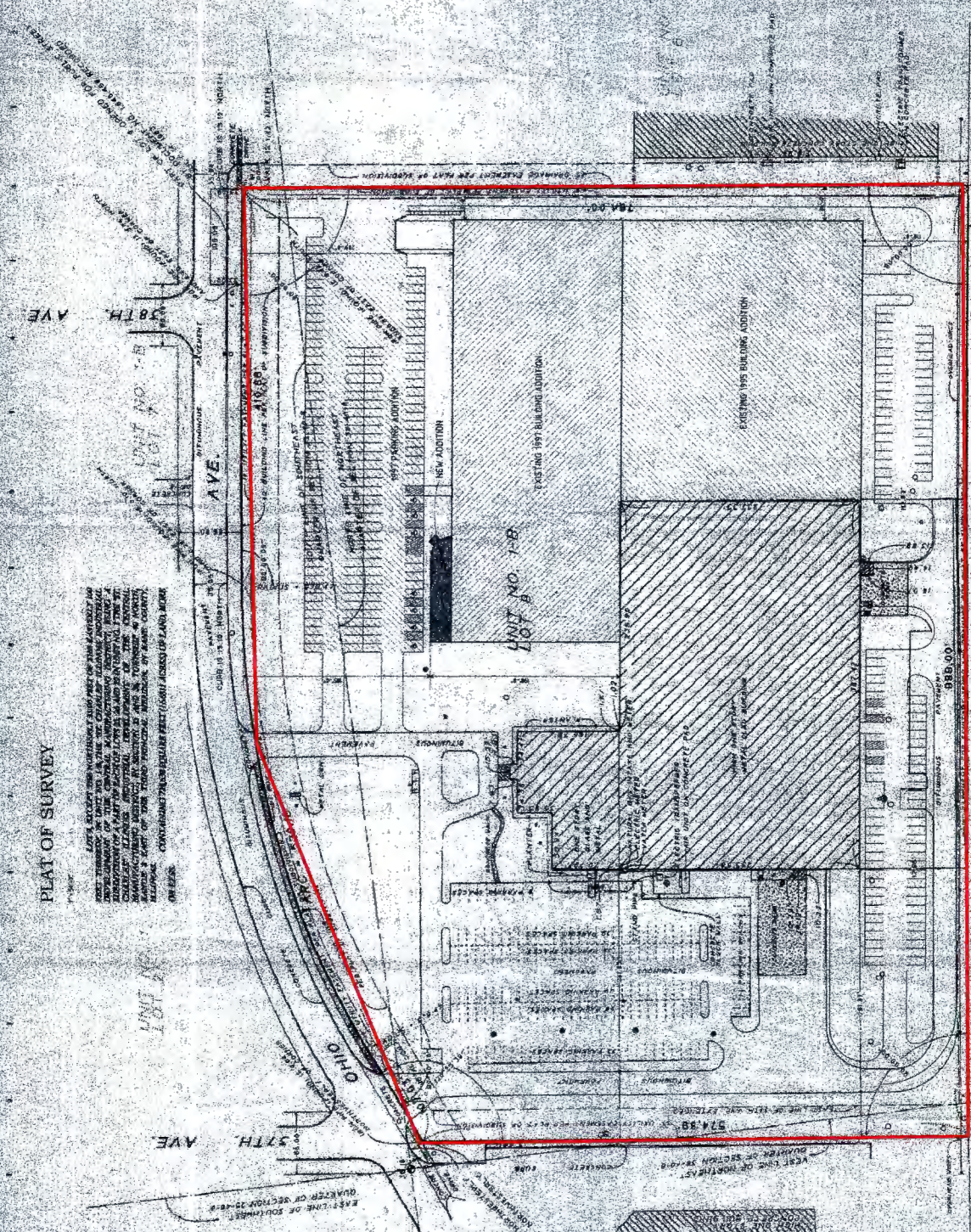


PLAT OF SURVEY

THIS PLAT SHOWS THE NORTHWEST CORNER OF THE EAST HALF OF SECTION 36, TOWNSHIP 36 NORTH, RANGE 10 WEST, COUNTY OF COOK, ILLINOIS, AS BEING A PART OF THE TRACT OF LAND CONTAINED IN THE ORIGINAL RECORDS OF THE COUNTY CLERK OF COOK COUNTY, ILLINOIS, AND AS BEING A PART OF THE TRACT OF LAND CONTAINED IN THE ORIGINAL RECORDS OF THE COUNTY CLERK OF COOK COUNTY, ILLINOIS, AND AS BEING A PART OF THE TRACT OF LAND CONTAINED IN THE ORIGINAL RECORDS OF THE COUNTY CLERK OF COOK COUNTY, ILLINOIS.



NOTICE
 THIS PLAT IS SUBJECT TO THE RECORDS OF THE COUNTY CLERK OF COOK COUNTY, ILLINOIS, AND TO THE RECORDS OF THE COUNTY CLERK OF COOK COUNTY, ILLINOIS, AND TO THE RECORDS OF THE COUNTY CLERK OF COOK COUNTY, ILLINOIS.

CHICAGO AND NORTHWESTERN RAILWAY COMPANY

