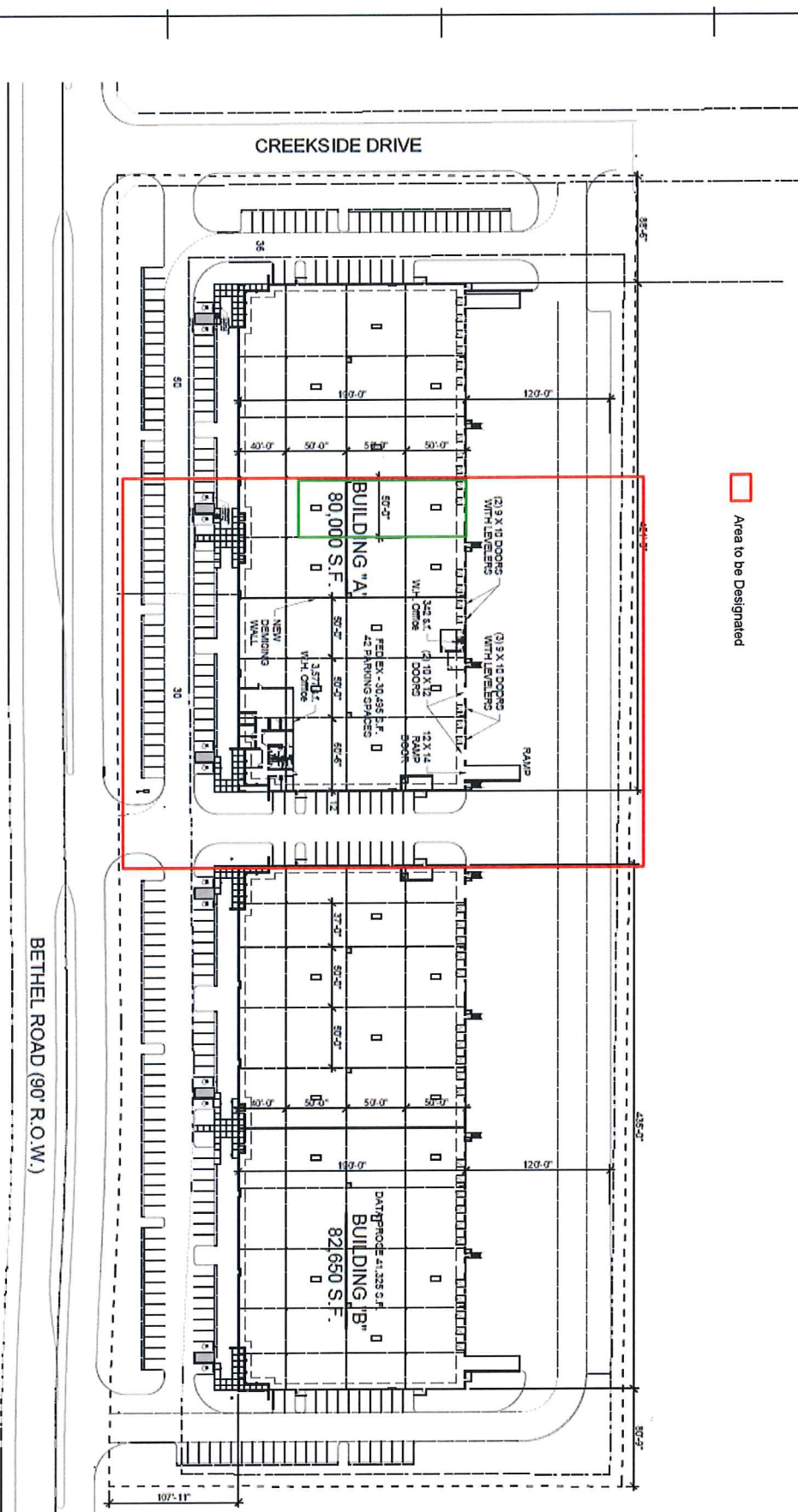


Area to be Designated



01 SITE PLAN
 SCALE: 1" = 20'-0"

FedEx Trade Networks Transport & Brokerage, Inc.
 +/- 3.33 Acres for Designation
 (includes 49,505 square foot building area)

Fed Ex Trade Networks
DFW Gateway
 @ Bethel Business Center Bldg. A
 1144 Bethel Road, Ste. 100 Coppel, Texas 75019

JOB #: 15009 CLIENT:

1. 10/15/13 DO NOT REUSE
 2. 10/20/13 CD REVIEW SET
 3. 12/01/13 CONSTRUCTION DOCUMENTS

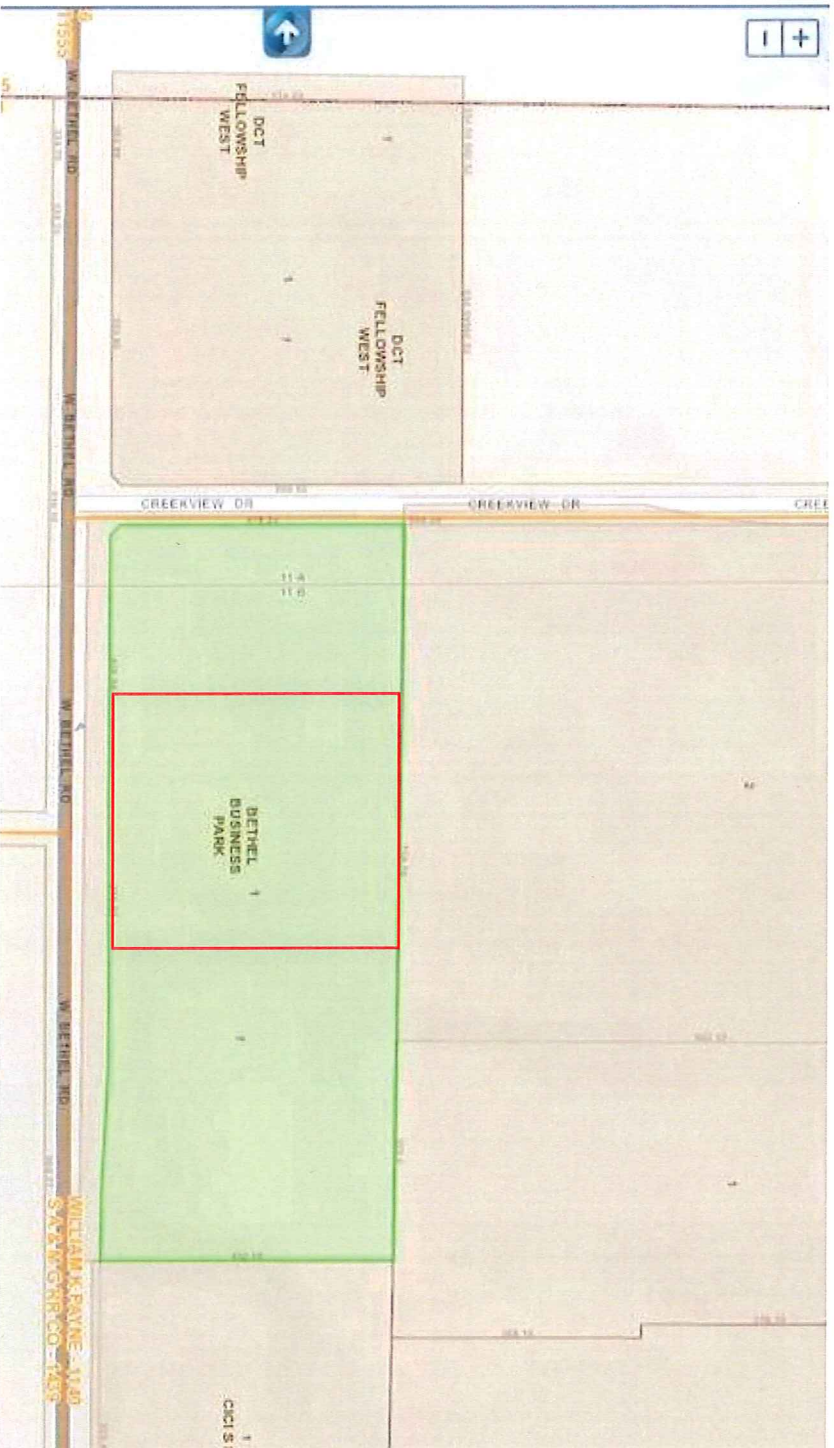
DATE: December 1, 2013
 SHEET: A01.10

SEAL: [Professional Engineer Seal]

SHEET CONTENTS:
 SITE PLAN

Site Plan

Dallas County Appraisal District Map View



FedEx Trade Networks Transport & Brokerage, Inc.
+/- 3.33 Acres for Designation
(includes 49,505 square foot building area)