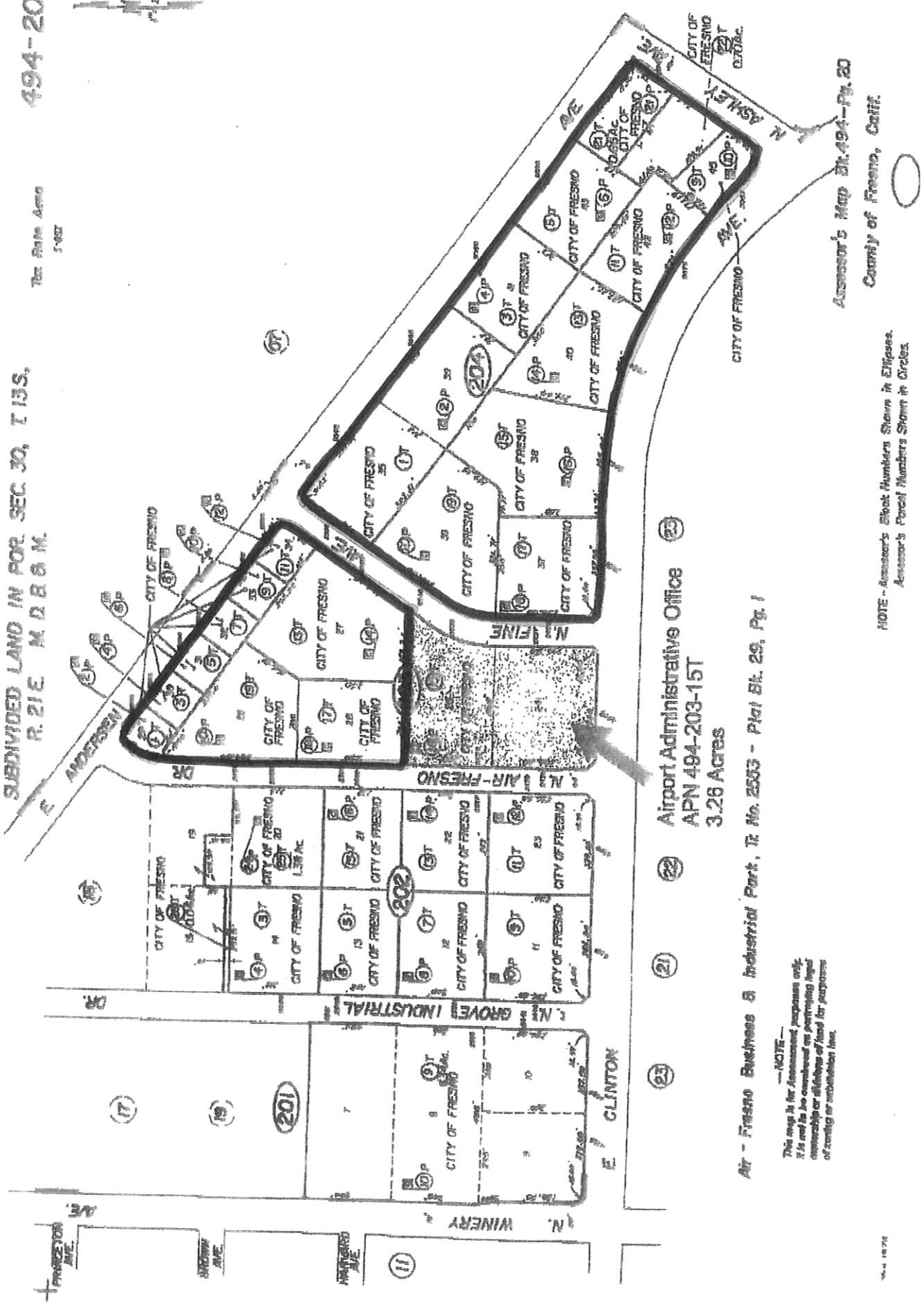


SUBDIVIDED LAND IN FOR SEC 30, T 13S,  
R. 21E. M. D. B. & M.

THE RATE AREA  
5-057

494-20



23 Airport Administrative Office  
22 APN 494-203-15T  
21 3.26 Acres

Air - Fresno Business & Industrial Part, Tr. No. 2553 - Plat Bl. 29, Pg. 1

NOTE - This map is for Assessment purposes only. It is not to be construed as providing legal ownership or interests of land for purposes of zoning or subdivision law.

NOTE - Assessor's Block Numbers Shown in Ellipses. Assessor's Parcel Numbers Shown in Circles.

Assessor's Map Bl. 494-Pg. 20  
County of Fresno, Calif.