


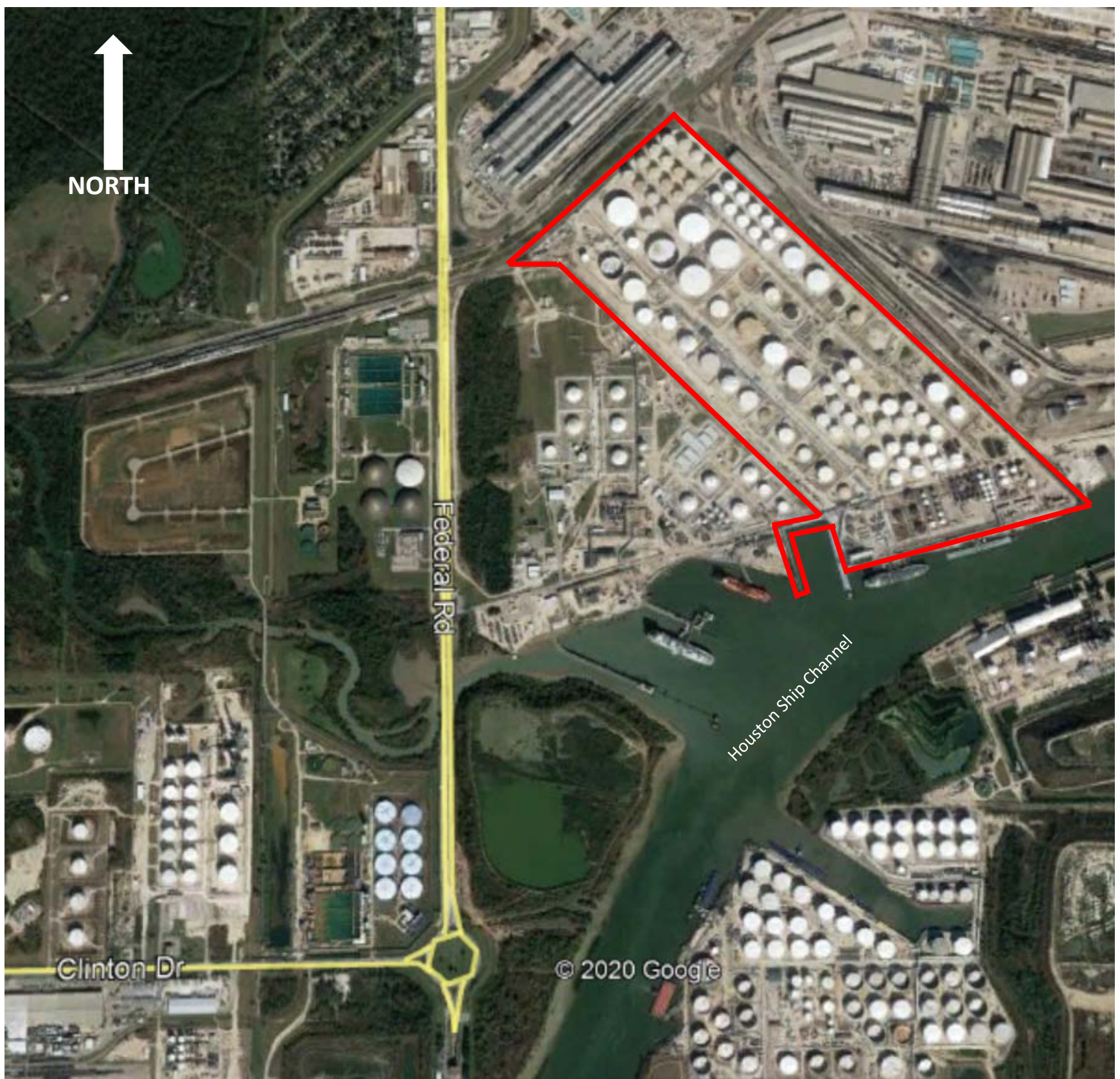


Approximately 195 acres
 Approximately 4,850 feet X 1,750 feet
 Twelve (12) Pipeline Connections
 - 6 Inbound, 5 Outbound, 1 Bidirectional
 136 Above Ground Petroleum Storage Tanks
 SD = Ship Dock
 BD = Barge DockVP

W/house = Warehouse
 Pipeline

Note: Landside access to the terminal is located off site approximately 0.5 miles west of the terminal at the entrance to American Petroleum Road. These security measures have been approved and are in accordance with US Coast Guard regulations.

Magellan Midstream Partners, L.P.
 12901 American Petroleum Road
 Galena Park, Texas 77547
 Harris County
 29° 45' 00" N / 95° 12' 15" W



NOTE: Site boundary is detailed in red

Magellan Midstream Partners, L.P.

12901 American Petroleum Road
Galena Park, Texas 77547
Harris County
29 ° 45 ' 00 " N / 95 ° 12 ' 15 " W