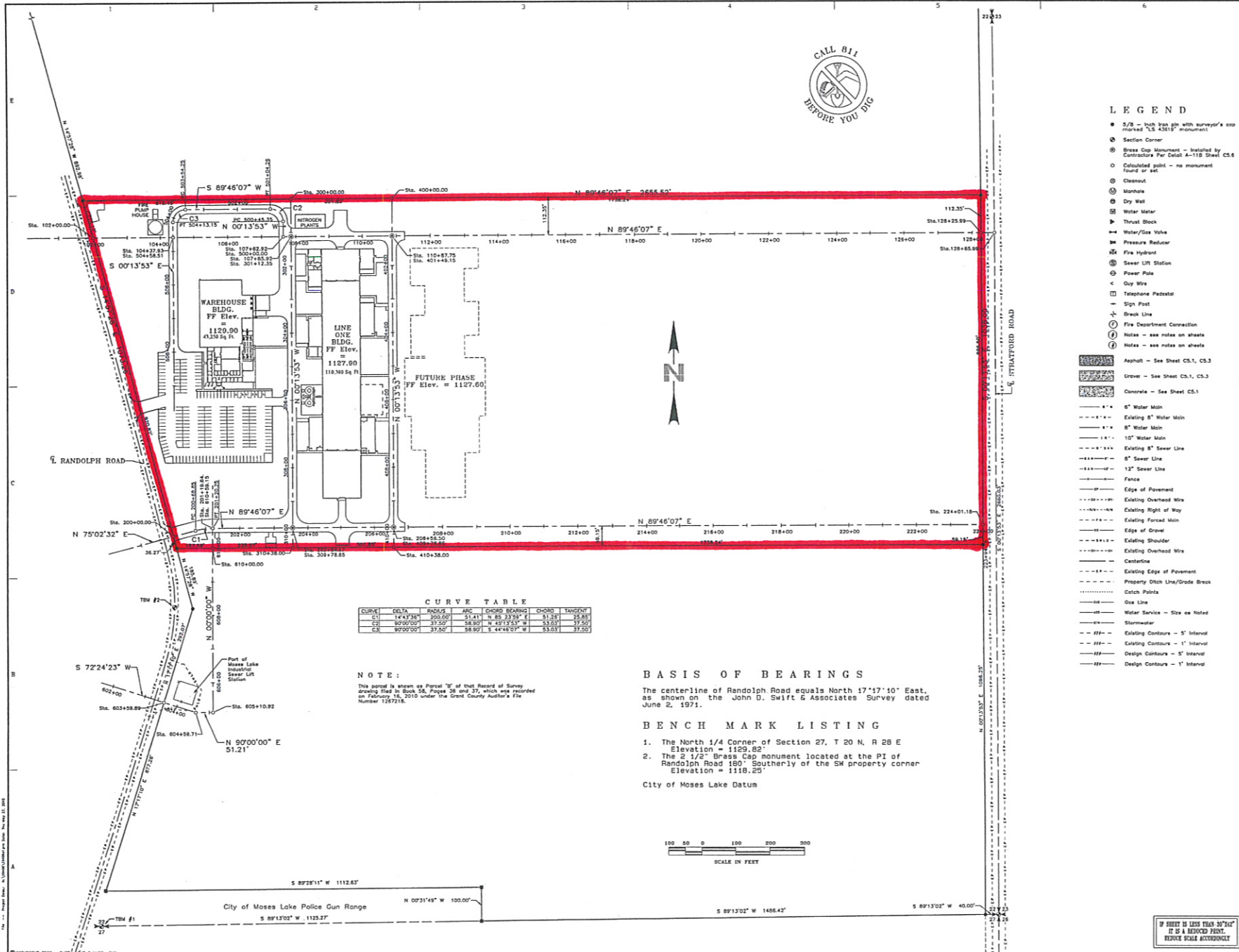


FTZ 203 Site 3 SGL Automotive Carbon Fibers LLC



CURVE TABLE

CURVE	DELTA	RADIUS	ARC	CHORD BEARING	CHORD	TANGENT
C1	144°34'	200.00	114.11	N 82°33'59" E	117.88	75.85
C2	90°00'00"	37.50	38.50	N 43°13'23" W	53.03	37.50
C3	90°00'00"	37.50	38.50	S 44°46'07" W	53.03	37.50

NOTE:
This parcel is shown as Parcel 37 of that Record of Survey approved and filed in Book 58, Pages 25 and 27, which was recorded on February 18, 2010 under the Grant County Auditor's File Number 126721.

BASIS OF BEARINGS
The centerline of Randolph Road equals North 17°17'10" East, as shown on the John D. Swift & Associates Survey dated June 2, 1971.

BENCH MARK LISTING

- The North 1/4 Corner of Section 27, T 20 N, R 28 E Elevation = 1193.62
- The 2 1/2" Brass Cap monument located at the PI of Randolph Road 160' Southerly of the SW property corner Elevation = 1118.25

City of Moses Lake Datum



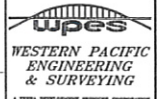
LEGEND

- 5/8" - 1/2" brass pin with surveyor's cap marked 'LS 4311' monument
 - ⊙ Section Corner
 - ⊙ Brass Cap Monument - Installed by Contractors Per Detail A-118 Sheet C5.6
 - Calculated point - no monument found or set
 - ⊙ Cleanout
 - ⊙ Manhole
 - ⊙ Dry Well
 - ⊙ Water Meter
 - ⊙ Thrust Block
 - ⊙ Water/Gas Valve
 - ⊙ Pressure Reducer
 - ⊙ Fire Hydrant
 - ⊙ Sewer Lift Station
 - ⊙ Power Pole
 - ⊙ Guy Wire
 - ⊙ Telephone Pedestal
 - ⊙ Sign Post
 - ⊙ Break Line
 - ⊙ Fire Department Connection
 - ⊙ Notes - see notes on sheets
 - ⊙ Notes - see notes on sheets
- ▨ Asphalt - See Sheet C5.1, C5.3
 - ▨ Gravel - See Sheet C5.1, C5.3
 - ▨ Concrete - See Sheet C5.1
- 8" Water Main
 - Existing 8" Water Main
 - 12" Water Main
 - Existing 12" Water Main
 - 8" Sewer Line
 - Existing 8" Sewer Line
 - 12" Sewer Line
 - Existing 12" Sewer Line
 - Edge of Pavement
 - Existing Right of Way
 - Existing Forced Main
 - Edge of Gravel
 - Existing Shoulder
 - Existing Overhead Wire
 - Contour
 - Existing Edge of Pavement
 - Property Chk Line/Grade Break
 - Catch Points
 - Gas Line
 - Water Service - Size as Noted
 - Stormwater
 - Existing Contours - 5' Interval
 - Existing Contours - 1' Interval
 - Design Contours - 5' Interval
 - Design Contours - 1' Interval



Con. Lee & Bart, Inc. - 2040 Robinson Blvd.
Suite 500 - Olyun, Wash 98513
80.3523 - Fax 80.3523 - www.clh.com

CONSULTANTS



1325 Hunter Place
Moses Lake, WA 98837
(509) 765-1023

STAMP



SGL
AUTOMOTIVE CARBON FIBERS
CHINOOK-SITE
8781 RANDOLPH RD NE, MOSES LAKE, WASHINGTON

MARK	DATE	DESCRIPTION

ISSUE:
PROJECT NO: 10406
CAD DWG FILE:
DRAWN BY: CAW
CHK'D BY: NDN

BD & PERMIT SET
JUNE 04, 2010

SHEET TITLE

MASTER PLAN & SITE LAYOUT

C1.1

IF SHEET IS LESS THAN 30" X 42"
IT IS A REDUCED PRINT.
REDUCE SCALE ACCORDINGLY