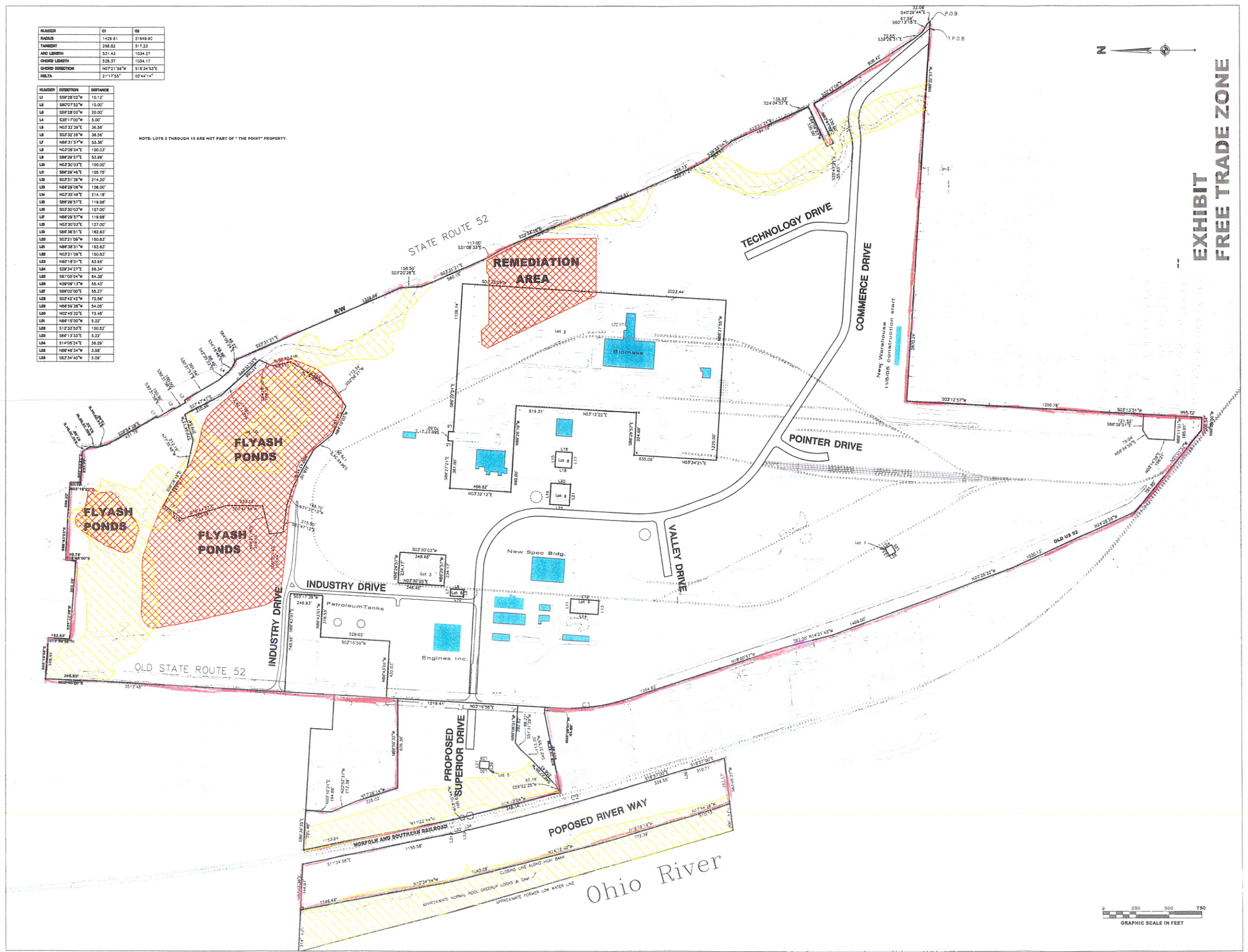


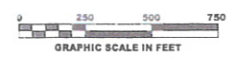
BLISSON	CR	CB
RADIUS	1429.81	21649.90
PERIMETER	258.82	517.23
ARC LENGTH	531.43	1034.37
CHORD LENGTH	538.37	1034.17
CHORD BEARING	N07°1'59"W	S19°34'53"E
DELTA	2°11'35"	02°44'14"

BLISSON	DIRECTION	DISTANCE
L1	S50°28'02"W	10.12'
L2	S80°07'52"W	10.00'
L3	S07°28'02"W	20.00'
L4	S30°17'00"W	5.00'
L5	N02°32'26"E	36.56'
L6	S02°32'28"W	36.56'
L7	N86°31'57"W	53.38'
L8	N03°09'04"E	100.03'
L9	S86°29'53"E	53.99'
L10	N03°30'03"E	100.00'
L11	S86°29'48"E	105.73'
L12	S03°31'38"W	214.20'
L13	N86°29'06"W	106.00'
L14	N02°35'49"E	214.18'
L15	S86°29'53"E	118.88'
L16	S02°30'03"E	127.00'
L17	N86°29'57"W	118.88'
L18	N03°30'03"E	127.00'
L19	S86°38'51"E	182.83'
L20	S03°21'08"W	150.83'
L21	N86°38'51"W	182.83'
L22	N03°21'08"E	150.83'
L23	N07°18'01"E	83.99'
L24	S29°24'27"E	84.34'
L25	S61°05'04"W	84.36'
L26	N29°08'13"W	85.43'
L27	S86°02'00"E	85.27'
L28	S02°42'42"W	73.58'
L29	N06°59'38"W	84.00'
L30	N02°45'32"E	73.48'
L31	N86°15'00"W	5.22'
L32	S12°33'53"E	100.52'
L33	S86°13'53"E	5.22'
L34	S14°05'24"E	36.20'
L35	N86°48'24"W	3.58'
L36	S83°54'40"W	5.00'

NOTE: LOTS 2 THROUGH 10 ARE NOT PART OF "THE POINT" PROPERTY.



**EXHIBIT
FREE TRADE ZONE**



PROJECT No.	DATE	REVISION
DATE 9/06/05		
DESL	DRP	
DR	LRP	
CRD.	LRP	

WOOLPERT LLP
1200 Corporate Court
Ashland, Kentucky 41101
806.329.1948
WOOLPERT FAX: 806.314.0147

THE POINT SOUTHERN OHIO'S PREMIER INDUSTRIAL PARK
LAWRENCE ECONOMIC DEVELOPMENT CORPORATION
SOUTH POINT, OHIO

SHEET NO.