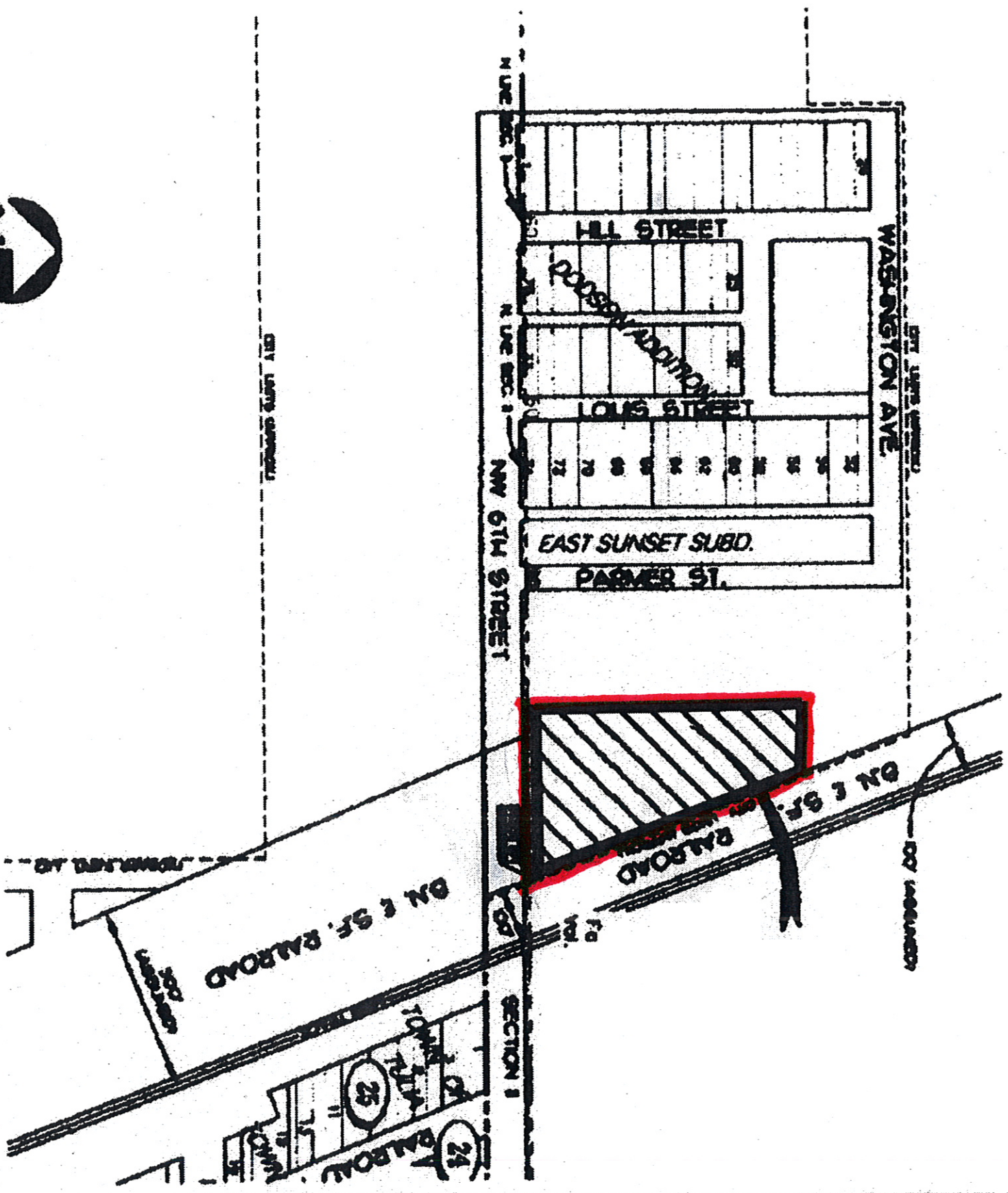


An approximate 4.1 Acre Tract of Land out of Section 12,
Block W-1, Swisher County, Texas



1"=250'

LEGEND

- SECTION LINE
 - - - CITY LIMITS
 - PROPERTY LINE
 - THE REFERENCE
- Site 8 RCD

NOTE: THIS PLAT IS NOT A LAND
BOUNDARY SURVEY.
MEASUREMENTS & SEASONS
TAKEN FROM RECORDED
DEEDS PROVIDED BY THE CITY
OF TULSA.

ONLY THOSE RECORDED
DOCUMENTS PROVIDED ARE
SHOWN HEREON.