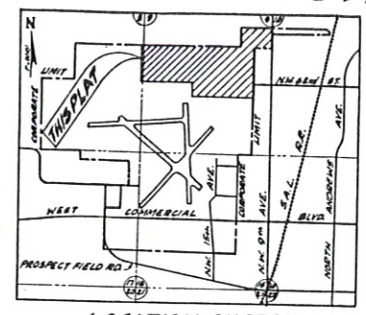
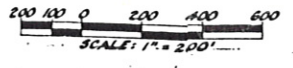


'FORT LAUDERDALE INDUSTRIAL AIRPARK - SECTION 2'

SECTIONS 8 & 9, TOWNSHIP 49 SOUTH, RANGE 42 EAST
CITY OF FORT LAUDERDALE, BROWARD COUNTY, FLORIDA

OFFICE OF THE CITY ENGINEER
NOVEMBER, 1966



DEDICATION

STATE OF FLORIDA KNOW ALL MEN BY THESE PRESENTS: That the City of Fort Lauderdale, County of Broward, a municipal corporation of the State of Florida, owner of the lands described and shown as indicated in this plat, has caused said lands to be subdivided in the manner shown, said subdivision to be known as "FORT LAUDERDALE INDUSTRIAL AIRPARK - SECTION 2". All Throughways are dedicated to the perpetual use of the public in the simple. All easements are dedicated to the perpetual use of the public, for purposes as indicated.

IN WITNESS WHEREOF, said City of Fort Lauderdale has caused this dedication to be signed by its Mayor-Commissioner and City Manager, and attested by its City Clerk, and the Corporate Seal to be affixed this 15th day of November, 1966.

Witness: Clayton A. Mitchell Mayor-Commissioner
Ronald D. Fowl City Manager
Edmund E. Berry City Clerk

ACKNOWLEDGMENT

STATE OF FLORIDA I HEREBY CERTIFY: That on this day personally appeared before me an officer duly authorized by law to administer oaths and take acknowledgments, Edmund E. Berry, Edmund E. Berry, Edmund E. Berry, known to me to be respectively the Mayor-Commissioner, City Manager, and City Clerk of the City of Fort Lauderdale, and they acknowledged before me that they executed the foregoing dedication as said officers of the City of Fort Lauderdale.

IN WITNESS my hand and seal at Fort Lauderdale, County of Broward, State of Florida, this 15th day of Nov., 1966.

Notary Public - State of Florida

DESCRIPTION

The East 40 feet of the South one-half (1/2) of the Northeast one-quarter (1/4) of Section 8 Township 49 South, Range 42 East; and the East 40 feet of the North 50 feet of the Southeast one-quarter (1/4) of Section 9 Township 49 South, Range 42 East;

TOGETHER WITH the South one-half (1/2) of the Northwest one-quarter (1/4) (N.W. 1/4) and the West three-quarters (3/4) of the South one-half (1/2) of the Northeast one-quarter (1/4) of the Northeast one-quarter (1/4) (N.E. 1/4) of the Northeast one-quarter (1/4) (N.E. 1/4) and the North 550 feet of the West 349 feet of the South 500 feet of the North 550 feet of the Southwest one-quarter (1/4) of Section 9, Township 49 South, Range 42 East.

ALL OF SAID LANDS lying in the City of Fort Lauderdale, Broward County, Florida.

CIRCUIT COURT CLERK'S CERTIFICATE

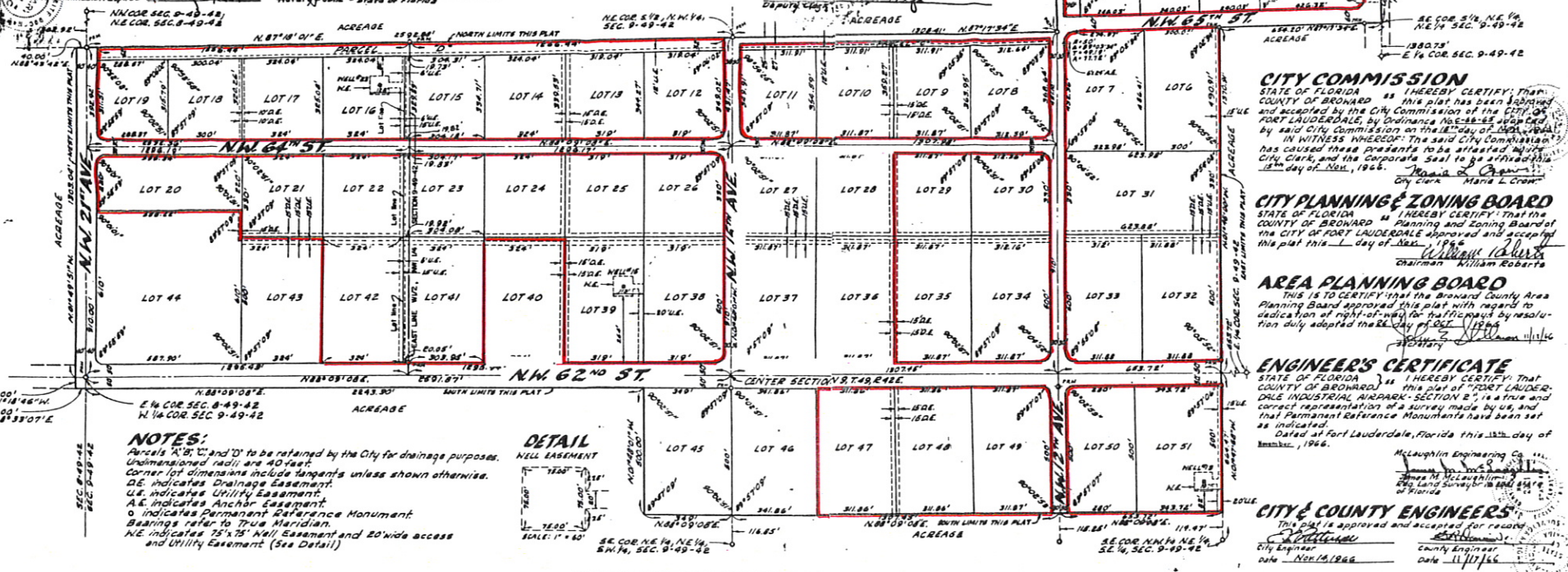
STATE OF FLORIDA I HEREBY CERTIFY: That this plat complies with the provisions of an Act to Regulate the Making of Surveys and Plats for Record of Maps and Plats in the State of Florida, approved by the Governor, June 11, 1925.

This plat was accepted for record by the Board of Commissioners of Broward County, Florida, this 15th day of Nov., 1966.

Jack Wheeler, Clerk of the Circuit Court

This instrument filed for record this 15th day of Nov., 1966, and recorded in Book 63 of Plats, at Page 8.

Jack Wheeler, Clerk of the Circuit Court



CITY COMMISSION

STATE OF FLORIDA I HEREBY CERTIFY: That this plat has been approved and accepted by the City Commission of the City of Fort Lauderdale, by Ordinance No. 48-66-SE adopted by said City Commission on the 15th day of Nov., 1966.

IN WITNESS WHEREOF: The said City Commission has caused these presents to be attested by its City Clerk, and the Corporate Seal to be affixed this 15th day of Nov., 1966.

Chairman: William Roberts
 City Clerk: Marie L. Cron

CITY PLANNING & ZONING BOARD

STATE OF FLORIDA I HEREBY CERTIFY: That this plat has been approved and accepted by the City Planning and Zoning Board of the City of Fort Lauderdale on this 15th day of Nov., 1966.

Chairman: William Roberts

AREA PLANNING BOARD

THIS IS TO CERTIFY that the Broward County Area Planning Board approved this plat with regard to dedication of right-of-way for traffic project by resolution duly adopted on the 15th day of Nov., 1966.

Chairman: William Roberts

ENGINEER'S CERTIFICATE

STATE OF FLORIDA I HEREBY CERTIFY: That this plat of FORT LAUDERDALE INDUSTRIAL AIRPARK - SECTION 2, is a true and correct representation of a survey made by me, and that Permanent Reference Monuments have been set as indicated.

Dated at Fort Lauderdale, Florida this 15th day of November, 1966.

McLaughlin Engineering Co., Inc.
 James M. McLaughlin, Professional Engineer
 676 Land Surveyors' Bldg. State of Florida

CITY & COUNTY ENGINEERS

This plat is approved and accepted for record by the City and County Engineers.

City Engineer: Clayton A. Mitchell Date: 11/17/66
 County Engineer: Edmund E. Berry Date: 11/17/66

NOTES:

- Parcels "A", "B", "C" and "D" to be retained by the City for drainage purposes. Undimensioned radii are 40 feet.
- Corner lot dimensions include tangents unless shown otherwise.
- DE indicates Drainage Easement.
- UE indicates Utility Easement.
- A.E. indicates Anchor Easement.
- O indicates Permanent Reference Monument.
- Bearings refer to True Meridian.
- NE indicates 75' x 75' Well Easement and 20' wide access and Utility Easement (See Detail)

DETAIL

