

Site 32 - Customs Air Warehouse



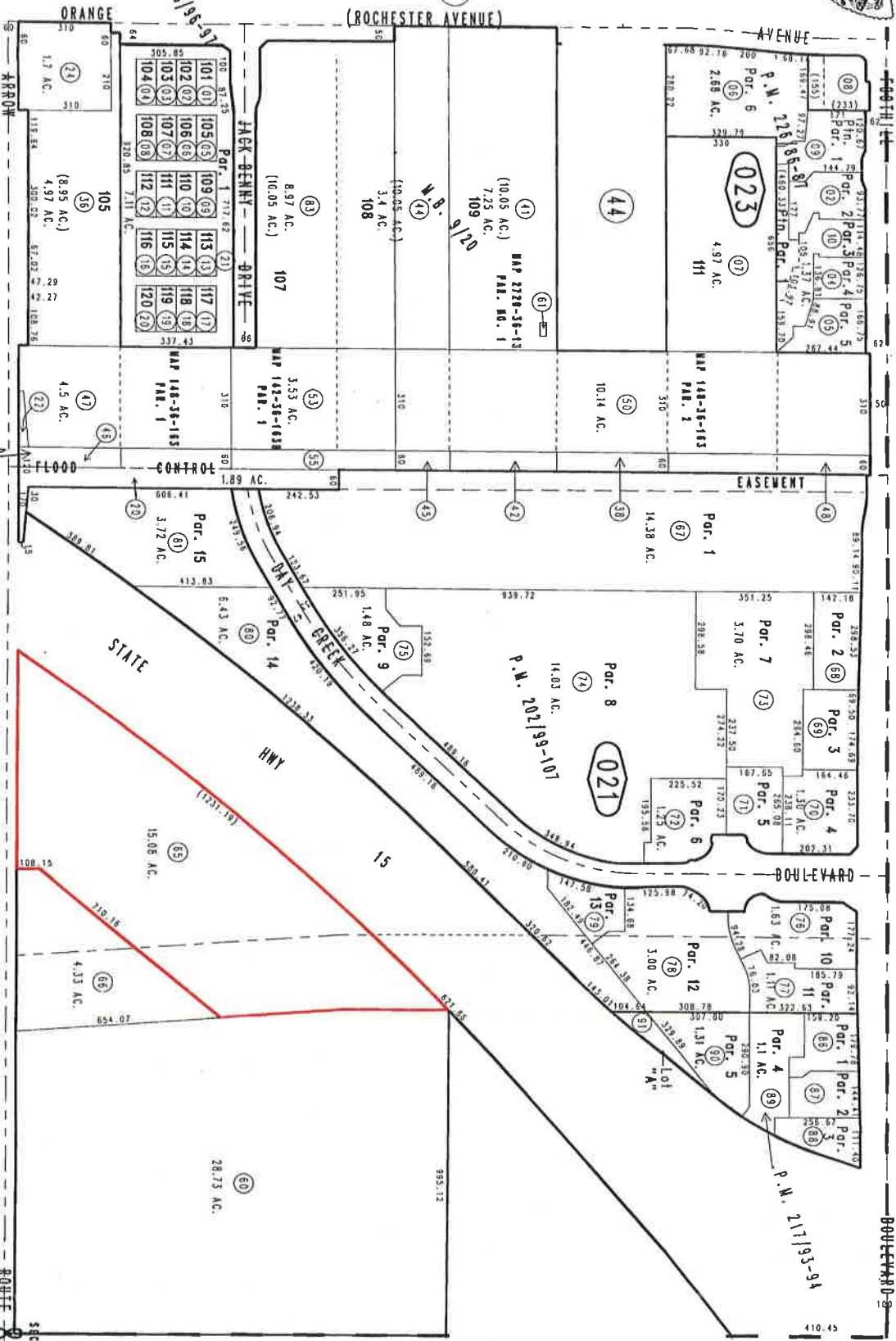
THIS MAP IS FOR THE PURPOSE  
OF AD VALOREM TAXATION ONLY.

0227  
15

N.W.1/4 Sec.8, T.1S.,R.6W., S.B.B.&M.

0227  
20

City of Rancho Cucamonga 0229-02  
Tax Rate Area  
15016



February 2004

Parcel Map No. 17229, P.M. 206/96-97, Cont'd  
Parcel Map No. 16033, P.M. 202/99-107  
Pln. Rochester, M.B. 9/20

Parcel Map No. 148-36-183C  
MAP 148-36-183C  
PAR. NO. 1

Parcel Map No. 17818, P.M. 226/86-87  
Parcel Map No. 17077, P.M. 217/93-94

Assessor's Map  
Book 0229 Page 02  
San Bernardino County

REVISED  
07/27/11 LH