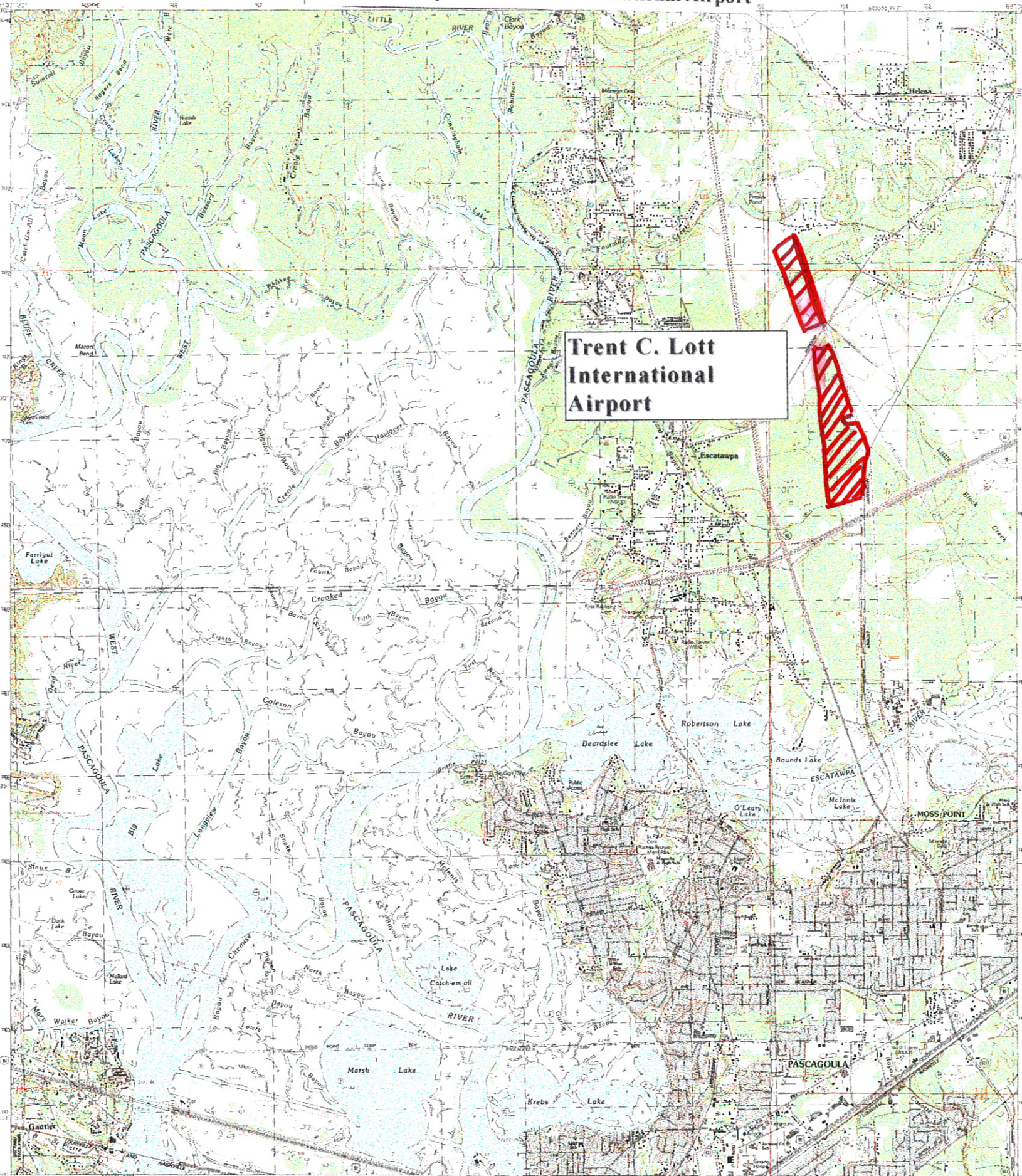


Jackson County Trent C. Lott International Airport



**Trent C. Lott
International
Airport**



PRODUCED BY THE UNITED STATES GEOLOGICAL SURVEY
CONTINGENT #1 - LANE, MISSISSIPPI STATE HIGHWAY DEPARTMENT
COMPILED FROM AERIAL PHOTOGRAPHS TAKEN IN 1954
FIELD CHECKED - 1959 300 BOTTLED - 1962
PROJECTION - UTM ZONE 18N TRANSVERSE MERCATOR
COORDINATE SYSTEM - UTM ZONE 18N TRANSVERSE MERCATOR
EARTH-SURFACE STATION GRID TICS - MISSISSIPPI EAST ZONE
UTM GRID ORIGIN - 180° 00' 00" WEST 30° 00' 00" NORTH
1983 DATUM - NORTH AMERICAN DATUM 1983
HORIZONTAL DATUM - 1983 NORTH AMERICAN DATUM
VERTICAL DATUM - 1983 NORTH AMERICAN DATUM
To place on the projected North American Datum of 1983
show the projection lines as shown by dotted contour lines
(18 meters north and 3 meters east)
There may be private buildings within the boundaries of map

PROVISIONAL MAP
Produced from original
manuscript drawings. Info.

SCALE 1:24,000



CONTOUR INTERVAL 5 FEET

For features see the contour interval by 100%

ROAD LEGEND

- Impaved Road
- Unimproved Road
- Trail
- Interstate Route
- U. S. Route
- State Route

1	2	3	4	5	6	7	8	9	10
1	2	3	4	5	6	7	8	9	10

PASCAGOULA NORTH MISSISSIPPI