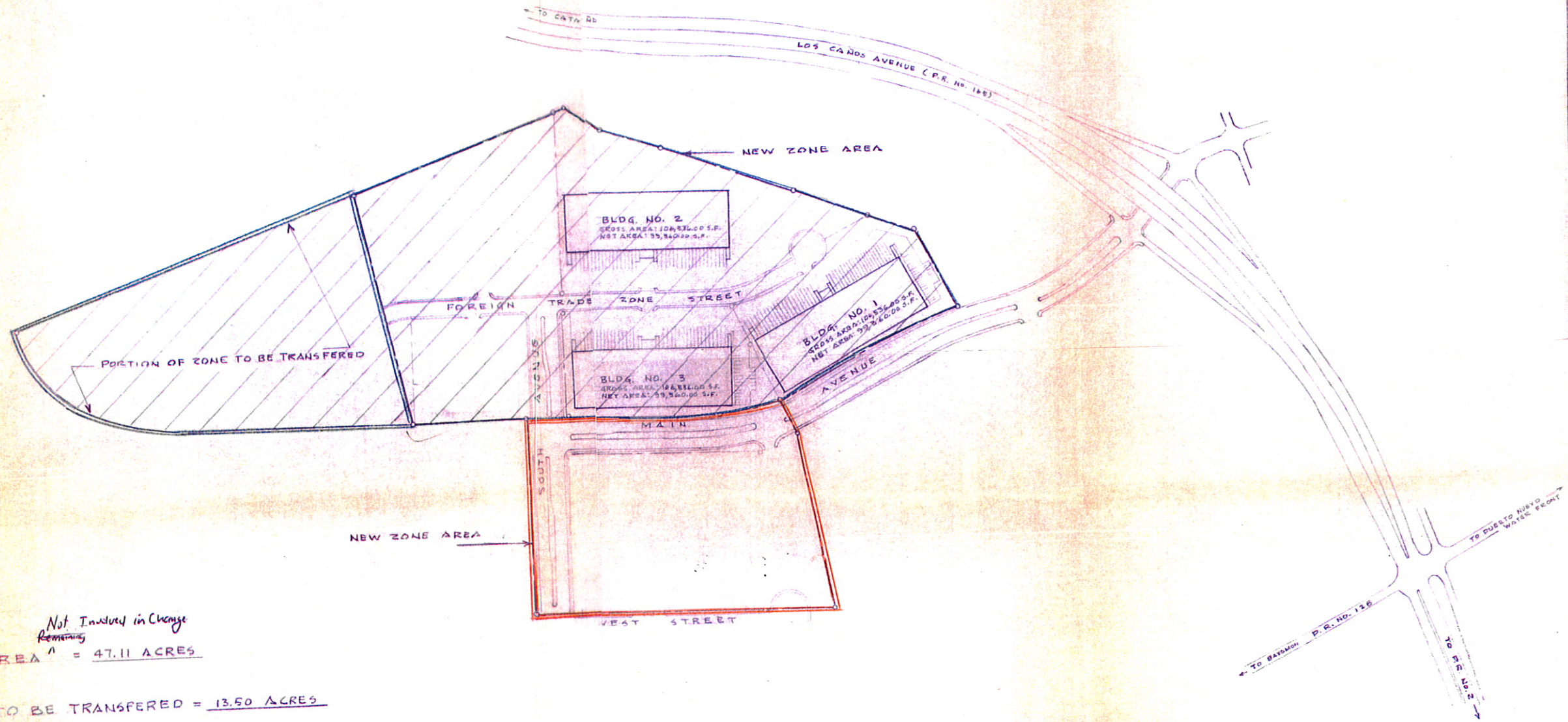
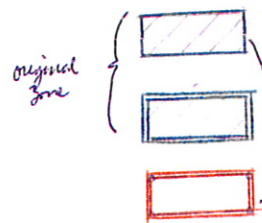


SCALE 1: 2,500



LEGEND



ORIGINAL ZONE AREA ^{Not Included in Change Remaining} = 47.11 ACRES

PORTION OF ZONE TO BE TRANSFERRED ^{original} = 13.50 ACRES

NEW ZONE AREA ^{ADDED} = $\frac{15.44}{13.50}$ ACRES

TOTAL ZONE AFTER CHANGE = 61 ACRES

SAN JUAN FOREIGN TRADE ZONE - G1
GENERAL LEGAL PLAN

