



**THE PORT AUTHORITY
OF NY & NJ**



No.	Date	Revision	Approved

Engineering Department
Design Divisions

**John F.
Kennedy
International
Airport**

**HYDRANT FUEL SYSTEM
EXTENSION FROM
SATELLITE FARM TO
BUILDING NO.14**

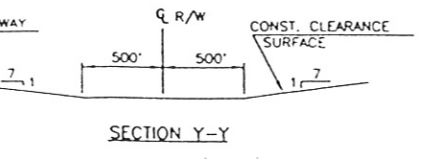
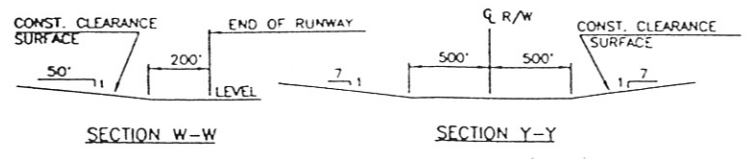
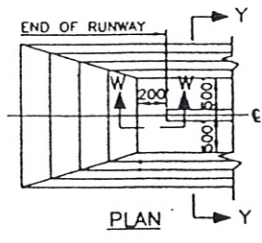
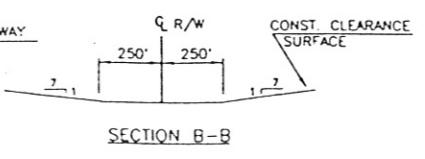
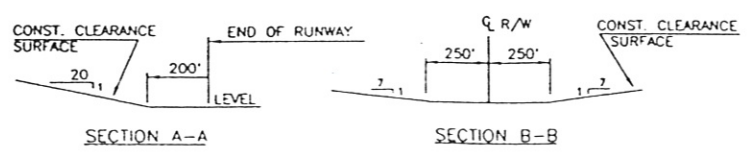
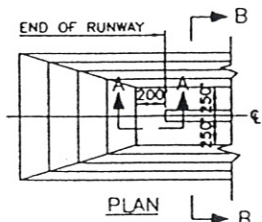
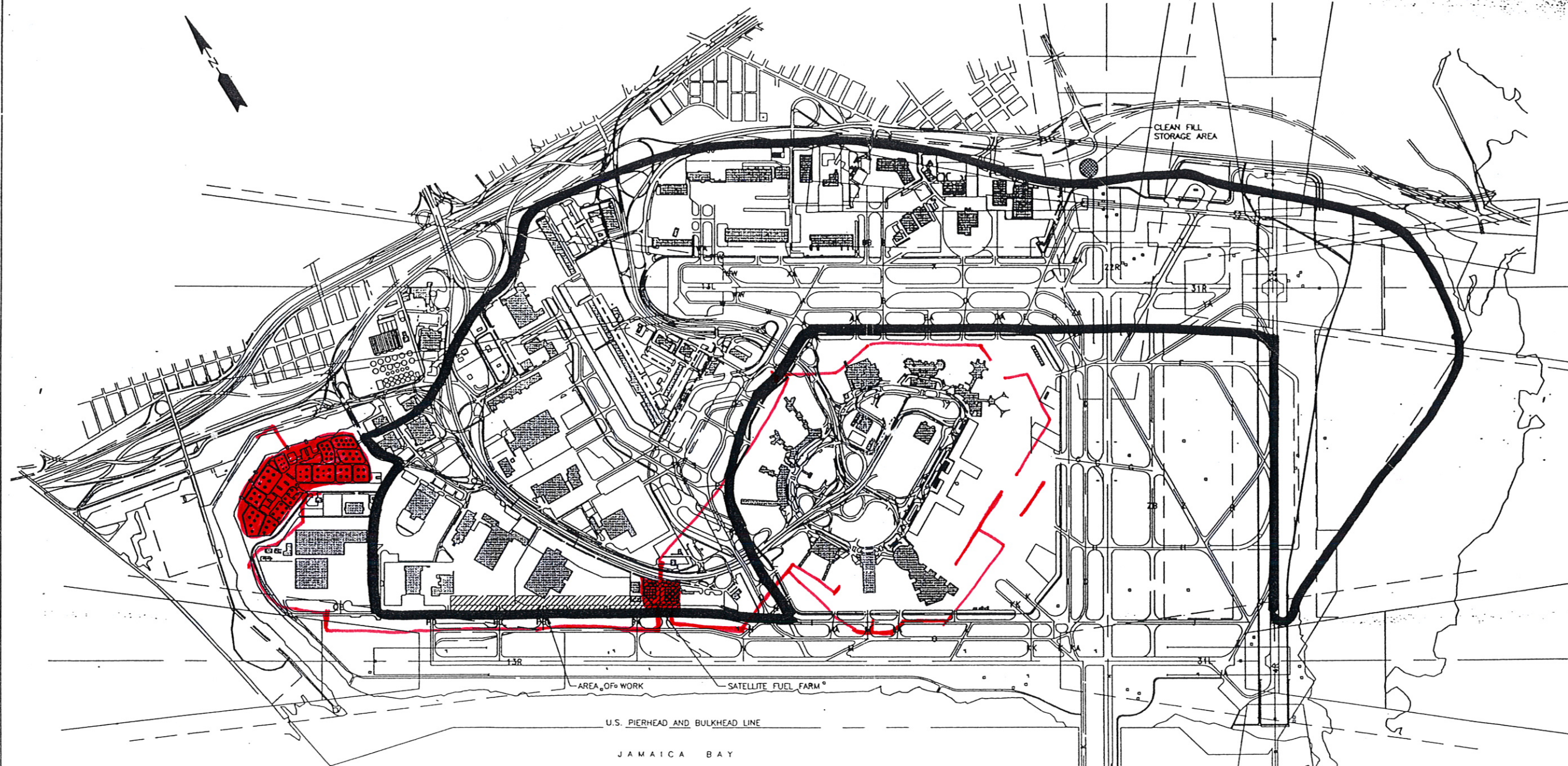
Title
**GENERAL
LOCATION PLAN**

This drawing subject to conditions in contract
All inventions, ideas, designs and methods
herein are reserved to Port Authority and
may not be used without its written consent.

Designed by _____ Drawn by _____ Checked by _____

Date: 6/24/94 Scale: AS SHOWN

Contract Number: JFK-110.142A Drawing Number: G-3



V.F.R. CONSTRUCTION CLEARANCE SURFACES R/W 4L-22R AND R/W 4R-22L

I.F.R. CONSTRUCTION CLEARANCE SURFACES R/W 4L-22R AND 4R-22L

JOHN F. KENNEDY INTERNATIONAL AIRPORT

HORIZONTAL CONTROL

COORDINATES ARE BASED ON A RECTANGULAR SYSTEM HAVING AS AN ORIGIN, THE EAST LINE OF 10TH AVENUE PROJECTED 18,568.333 FEET NORTH OF THE SOUTH LINE OF WEST 155TH STREET, APPROXIMATELY THE NORTH EAST CORNER OF WEST 225TH STREET AND 10TH AVENUE.

THIS LATITUDE 40°-52'-33.479" NORTH AND LONGITUDE 73°-54'-39.028" WEST LINE OF 10TH AVENUE HELD AS GRID NORTH WHICH IS 28°-59'-13.5" EAST OF TRUE NORTH.

VERTICAL CONTROL

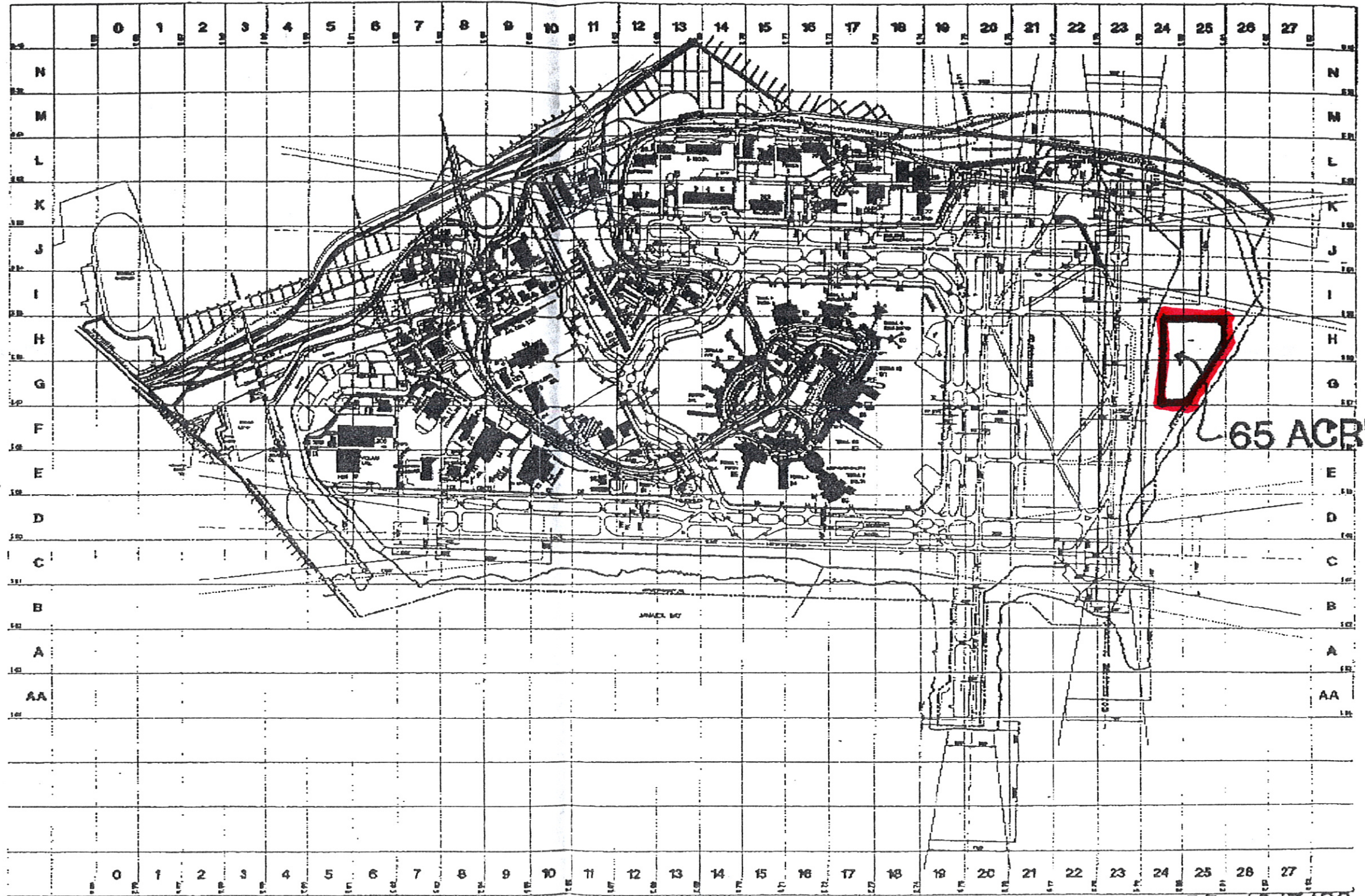
ELEVATION 0.00' IS MEAN LOW WATER AT JAMAICA BAY WHICH IS 2.233 FEET ABOVE MEAN SEA LEVEL AT SANDY HOOK AS ESTABLISHED BY THE NATIONAL OCEAN SURVEY.



FILE NAME: JFK-110/142A-300

P.02/02

DEC-07-1998 12:16



TOTAL P.02

65 ACRES ±

APD 12/7/98

JFK INTERNATIONAL AIRPORT