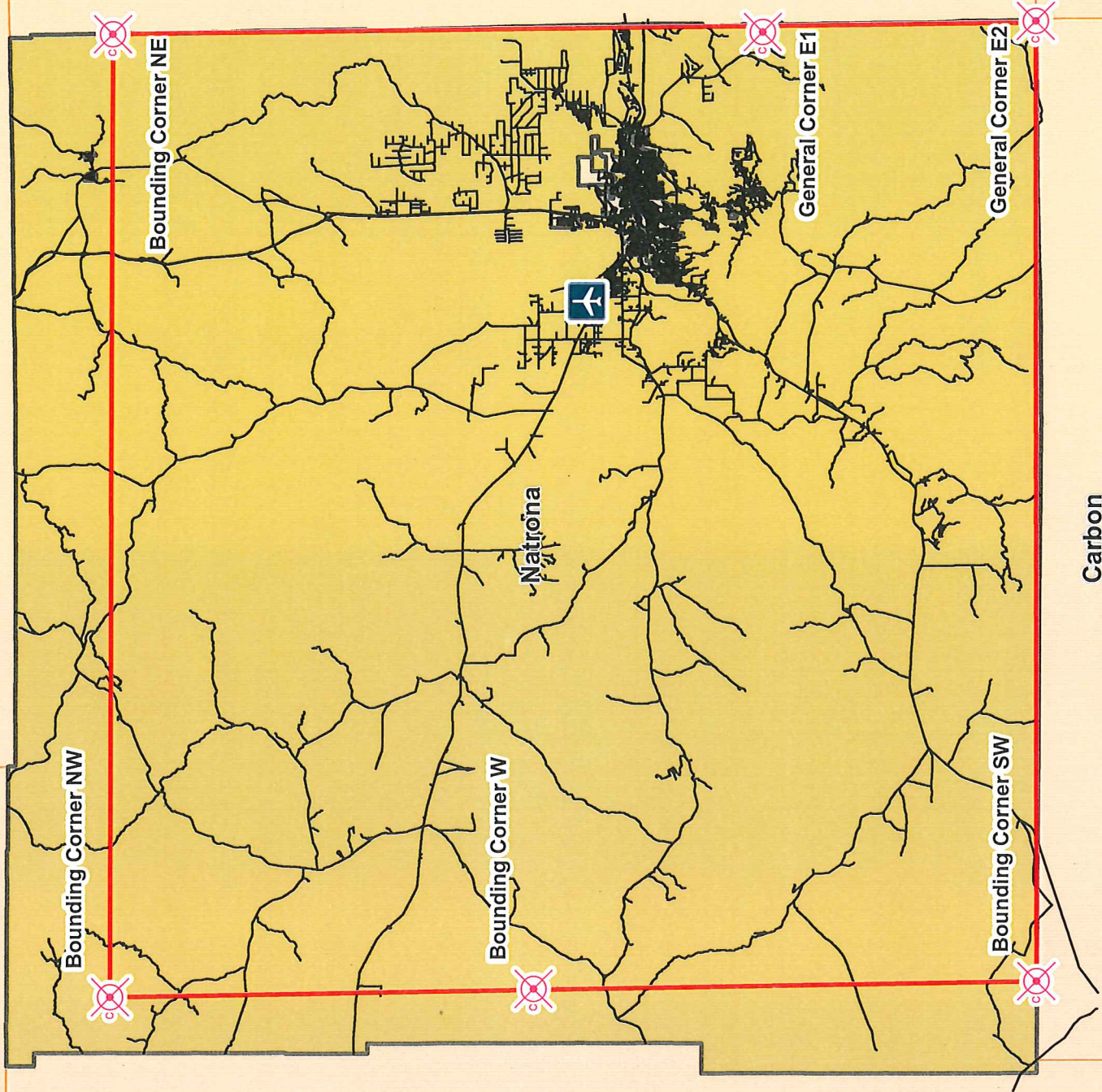


Washakie

Johnson

NRGC Geosmart



Legend

Corner Coordinates

- Bounding Corner NE -106.0741888 43.38728905
- Bounding Corner NW -107.4364927 43.39393786
- Bounding Corner SW -107.4132526 42.43439364
- Bounding Corner W -107.4243137 42.95511506
- General Corner E1 -106.0855986 42.71556213
- General Corner E2 -106.0758832 42.43313181
- Natrona County Airport

Name

NC Airport Bounding Box: 4522 sq mi

Streets

Administrative Boundary

Natrona County

Natrona Regional Geospatial Cooperative
 City of Casper
 200 N DAVID ST
 CASPER WY 82601

All data, information, and maps are provided without warranty or any representation of accuracy, timeliness or completeness even though the Natrona Regional Geospatial Cooperative (NRGC) has used reasonable efforts to make its data as accurate as possible. Maps and data are to be used for reference purpose only and the NRGC shall assume no liability for the use, misuse, accuracy or completeness of this information.

