

Duluth Service Area for ASF (proposed):

Itasca County:

The service area for Itasca County includes the portion of the county with lies to the south of the following line. Beginning at the intersection of US 169 and the southern border of Itasca County, proceed northward along US 169 to the intersection of US 169 and the city limits of Grand Rapids [Fig. I-1]. Then proceed westward, northward, and eastward (respectively) along the city limits of Grand Rapids to the point at which the city limits of Grand Rapids intersect with US 169 [Fig. I-2]. Proceed north along US 169 to the point at which US 169 intersects with the city limits of Coleraine [Fig. I-3]. Proceed northward and eastward, respectively, to the point at which the city limits of Coleraine intersect with the city limits of Iron Range [Fig. I-4]. Then proceed northward and eastward, respectively, to the point at which the city limits of Iron Range intersect with the city limits of Calumet [Fig. I-4]. Then proceed northward, eastward, and southward (respectively) to the point at which the city limits of Calumet intersect with US 169 [Fig. I-4]. Then proceed northeasterly along US 169 to the point at which it intersects the city limits of Nashwauk [Fig. I-5]. Then proceed northward, eastward, and southward (respectively) to the point at which the city limits of Nashwauk intersect US 169. Proceed eastward along US 169 to the point at which it intersects the Itasca/St. Louis County border [Fig. I-6], which is the point of ending.

St. Louis County:

The service area for St. Louis County includes the portion of the county with lies to the south of the following line. Beginning at the intersection of US 169 and the western border of St. Louis County, proceed eastward along US 169 [Fig. S-1] to the intersection of US 169 and the city limits of Hibbing [Fig. S-2]. Then proceed northward and eastward, respectively, along the city limits of Hibbing to the point at which it intersects with US 169. Then proceed northeasterly along US 169 to the point at which it intersects the city limits of Chisolm. Proceed northward, eastward, and southward (respectively) along the city limits of Chisolm to the point at which it intersects US 169. Proceed northeasterly along US 169 to the point at which it intersects with the Balkan/Great Scott township border [Fig. S-2]. Proceed northward along the Balkan/Great Scott township border [Fig. S-2] to the point at which it meets the Great Scott/Leander Lake township border [Fig. S-3]. Then proceed easterly along the Great Scott/Leander Lake township border to the point at which it intersects the Great Scott/Sand Lake township border. Proceed southward along the Great Scott/Sand Lake township border to the point at which it intersects the Camp A Lake/Sand Lake township border [Fig. S-3]. Then proceed eastward along the Camp A Lake/Sand Lake township border to the point at which it intersects CR 21 [Fig. S-4]. Proceed northeasterly along CR 21 to the point at which it intersects SR 135 [Fig. S-4]. Proceed southward along SR 135 to the point at which it meets the city limits of Aurora. Proceed eastward and southward, respectively, to the point at which the city limits of Aurora meet CR 110 [Fig. S-4]. Then proceed eastward along CR 110 [Fig S-4 & S-5]. Continue along CR 110 to the point at which it intersects CR16 [Fig. S-6]. Then continue eastward along CR 16 to the point at which it intersects with the St. Louis/Lake County border [Fig. S-6], which is the point of ending.

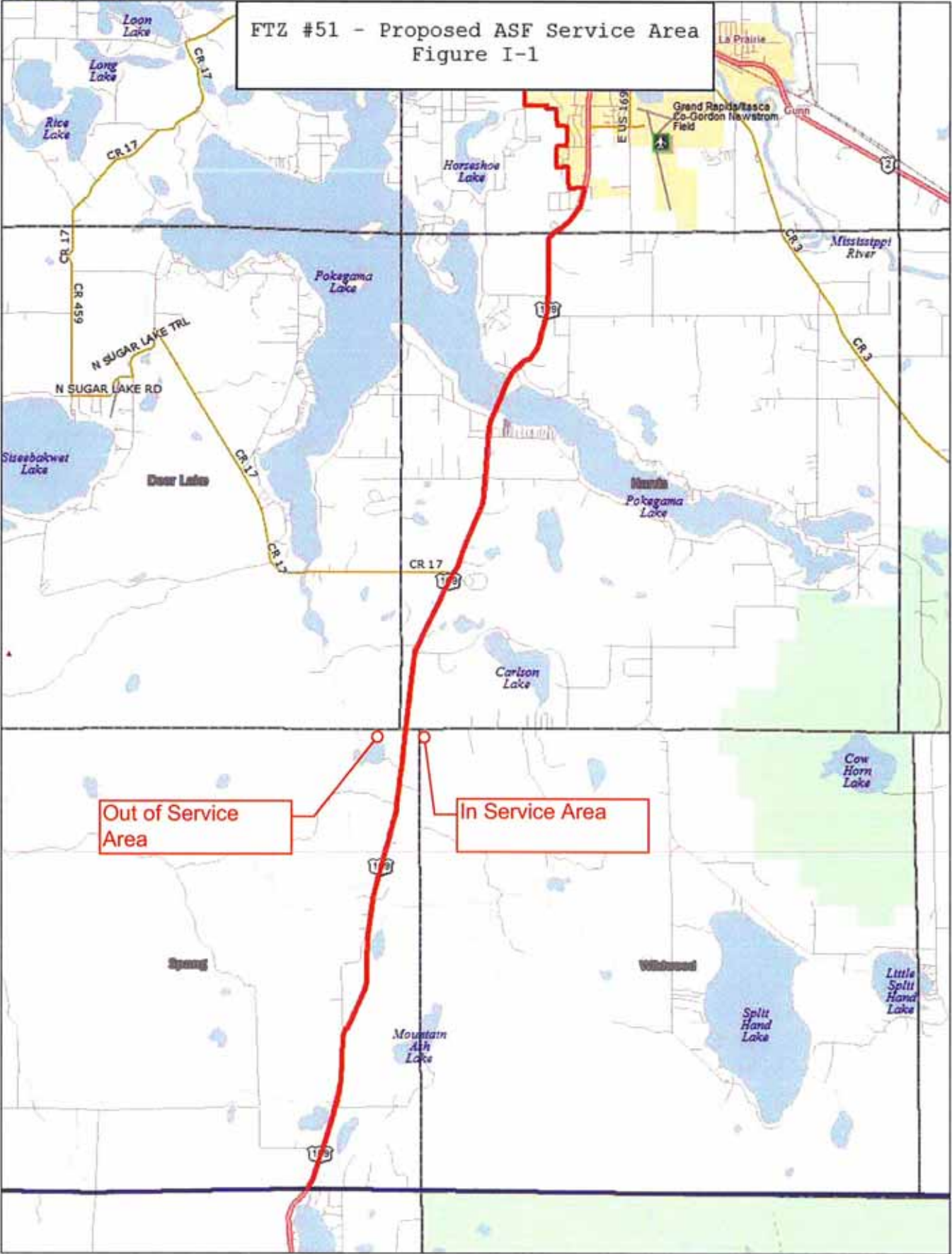
Lake County:

The service area for Lake County includes the portion of the county which lies to the south of the following line. Beginning at the intersection of the St. Louis/Lake County border and CR15, proceed eastward along CR15 to the point at which it intersects Highway 2 [Fig. L-1]. Proceed northward along Highway 2 to the point at which it meets RT 104 (White Road) and proceed northeasterly along RT 104 [Fig. L-1]. Continue along RT 104 to the point at which it intersects SR1 [Fig. L-2]. Proceed southward along SR 1 to the point at which it terminates at Lake Superior, which is the point of ending [Fig. L-3].

Adjacency Requirement:

The Service Area complies with the FTZ Board's adjacency requirement. Potential sites within the proposed Service Area are located within the Duluth Customs port of entry or within less than 60 miles or less than 90 minutes drive time from the outer limits of the Duluth Customs port of entry. The area determined by the adjacency requirement allows the adjacency distance to be measured from the outer limits of the port of entry. The Service Area Map located under General Maps, indicates measurements for 60 miles in distance or the estimated 90 minutes drive time from the address of the U.S. Customs and Border Protection office in Duluth, MN (which is less than the FTZ Board's adjacency requirement). Potential new Magnet and Usage-Driven sites within the proposed service area will require additional concurrence from U.S. Customs and Border Protection, on a case by case basis, as part of the ASF Minor Boundary Modification request made to the FTZ Board at such time as designation for the sites is requested.

FTZ #51 - Proposed ASF Service Area
Figure I-1



Data use subject to license.

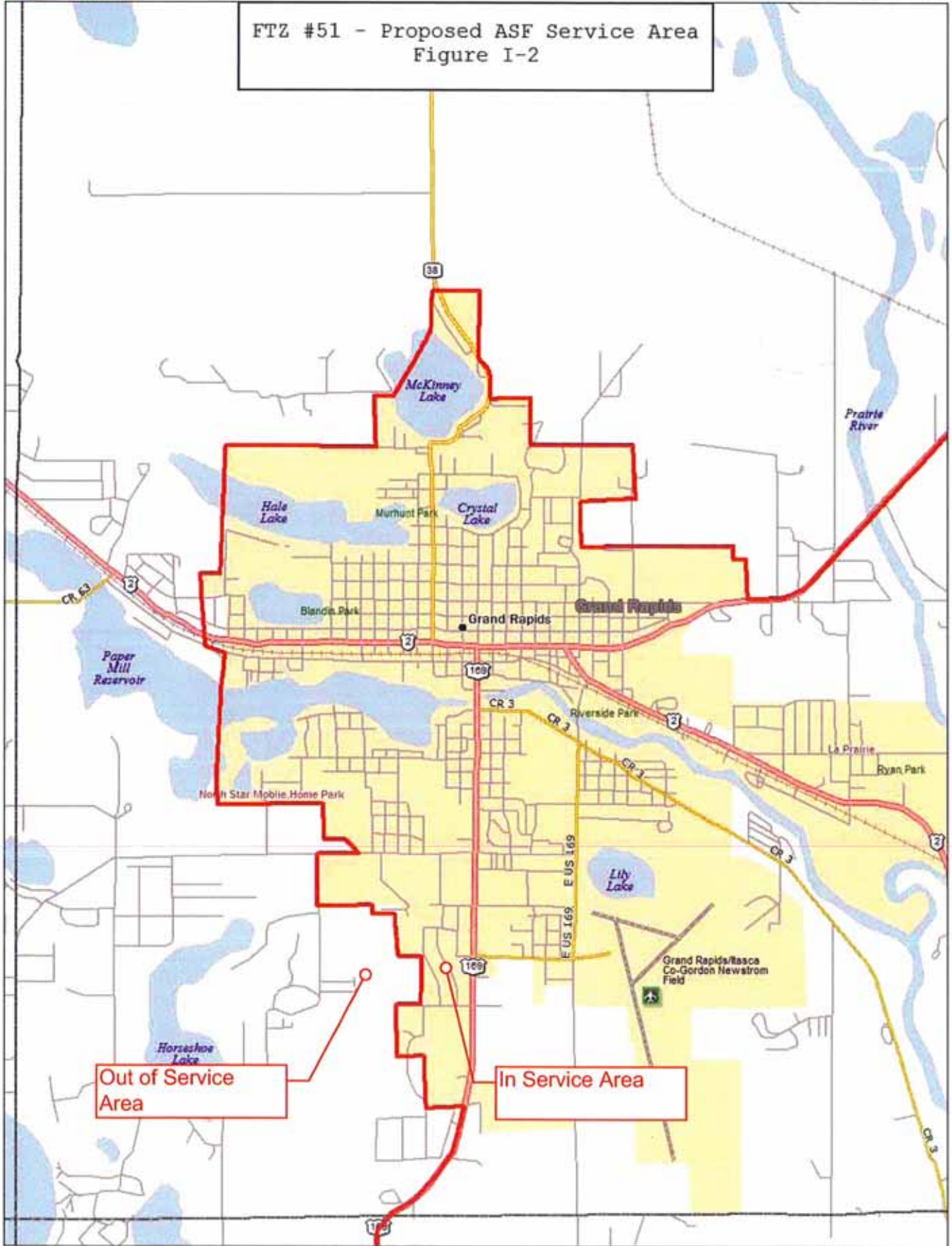
© DeLorme. DeLorme Street Atlas USA® 2009.

www.delorme.com



Data Zoom 11-0

FTZ #51 - Proposed ASF Service Area
Figure I-2



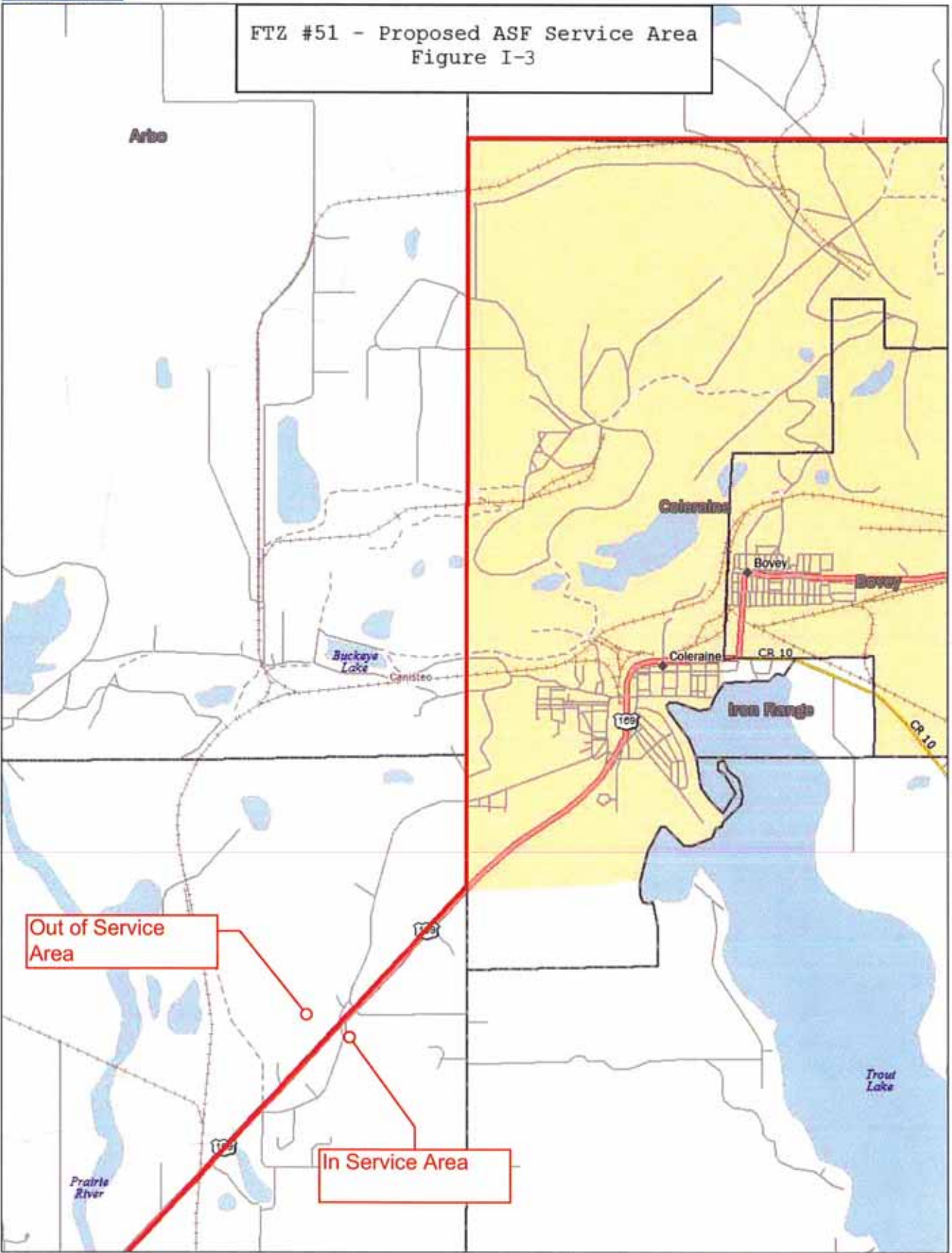
Data use subject to license.

© DeLorme. DeLorme Street Atlas USA® 2009.

www.delorme.com



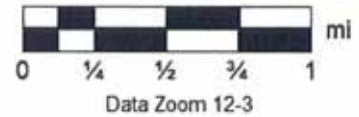
FTZ #51 - Proposed ASF Service Area
Figure I-3



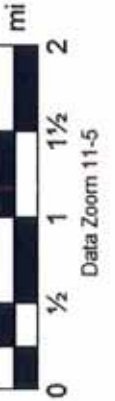
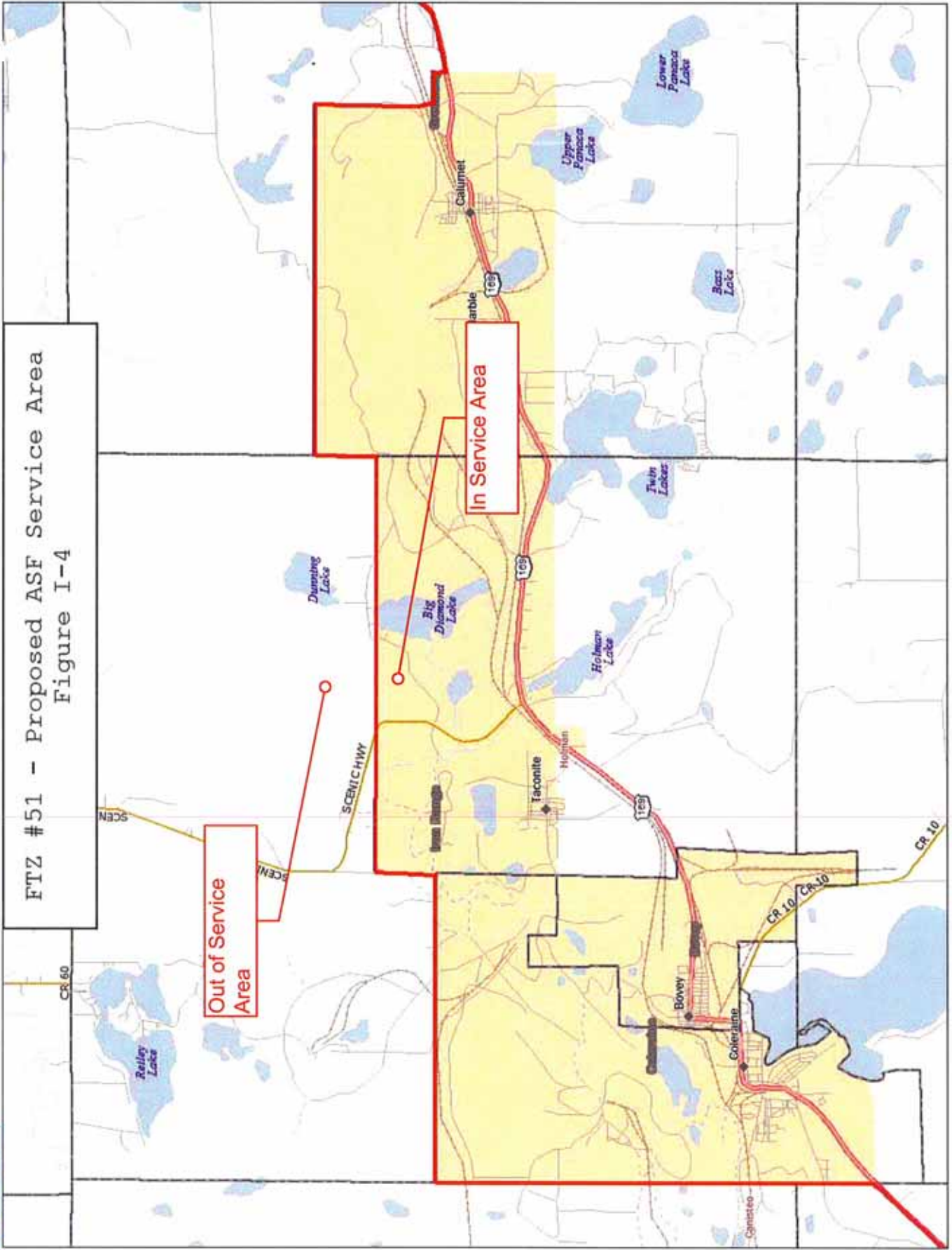
Data use subject to license.

© DeLorme. DeLorme Street Atlas USA® 2009.

www.delorme.com



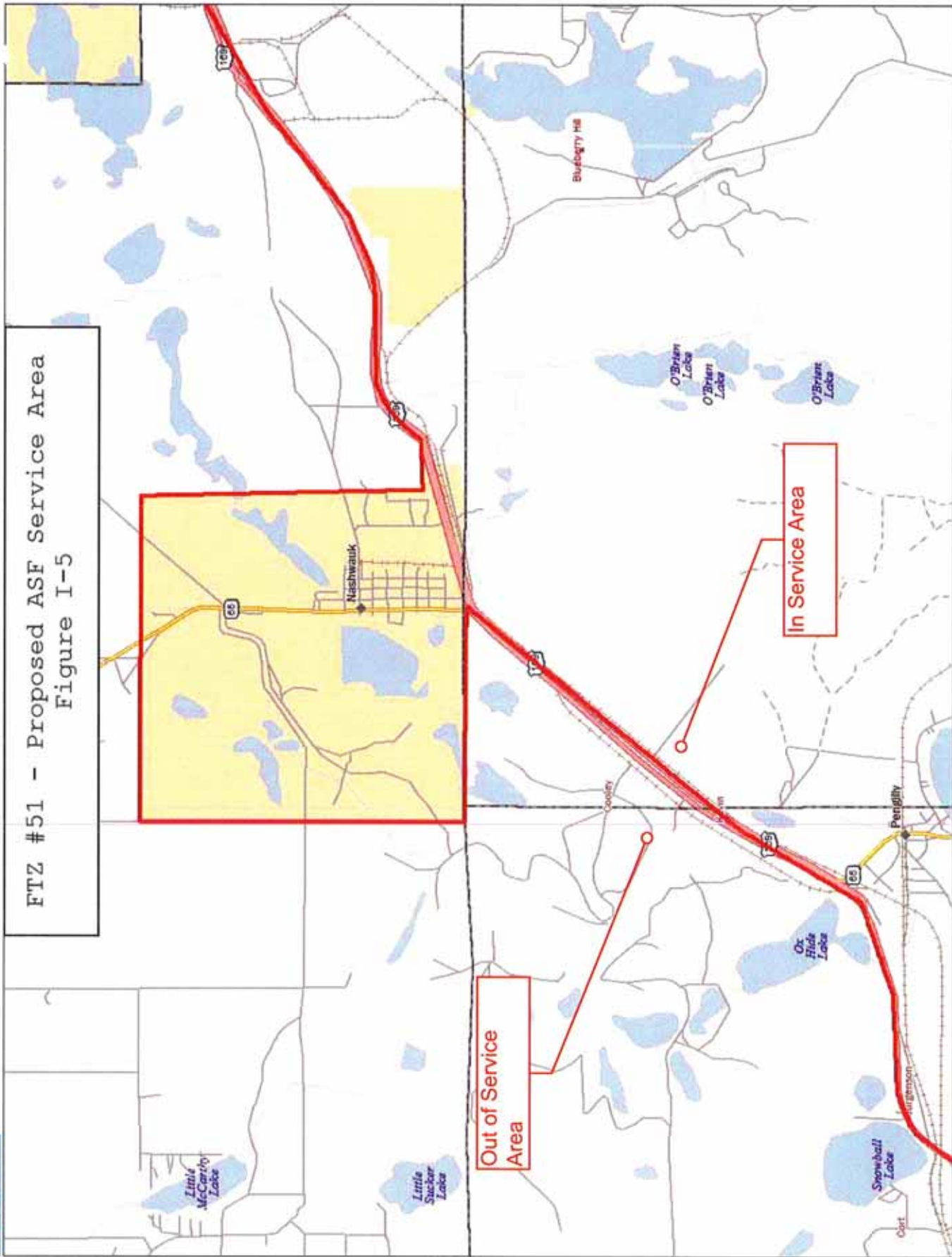
FTZ #51 - Proposed ASF Service Area Figure I-4



Data Zoom 11-5



MN (0.4° E)



FTZ #51 - Proposed ASF Service Area
Figure I-5

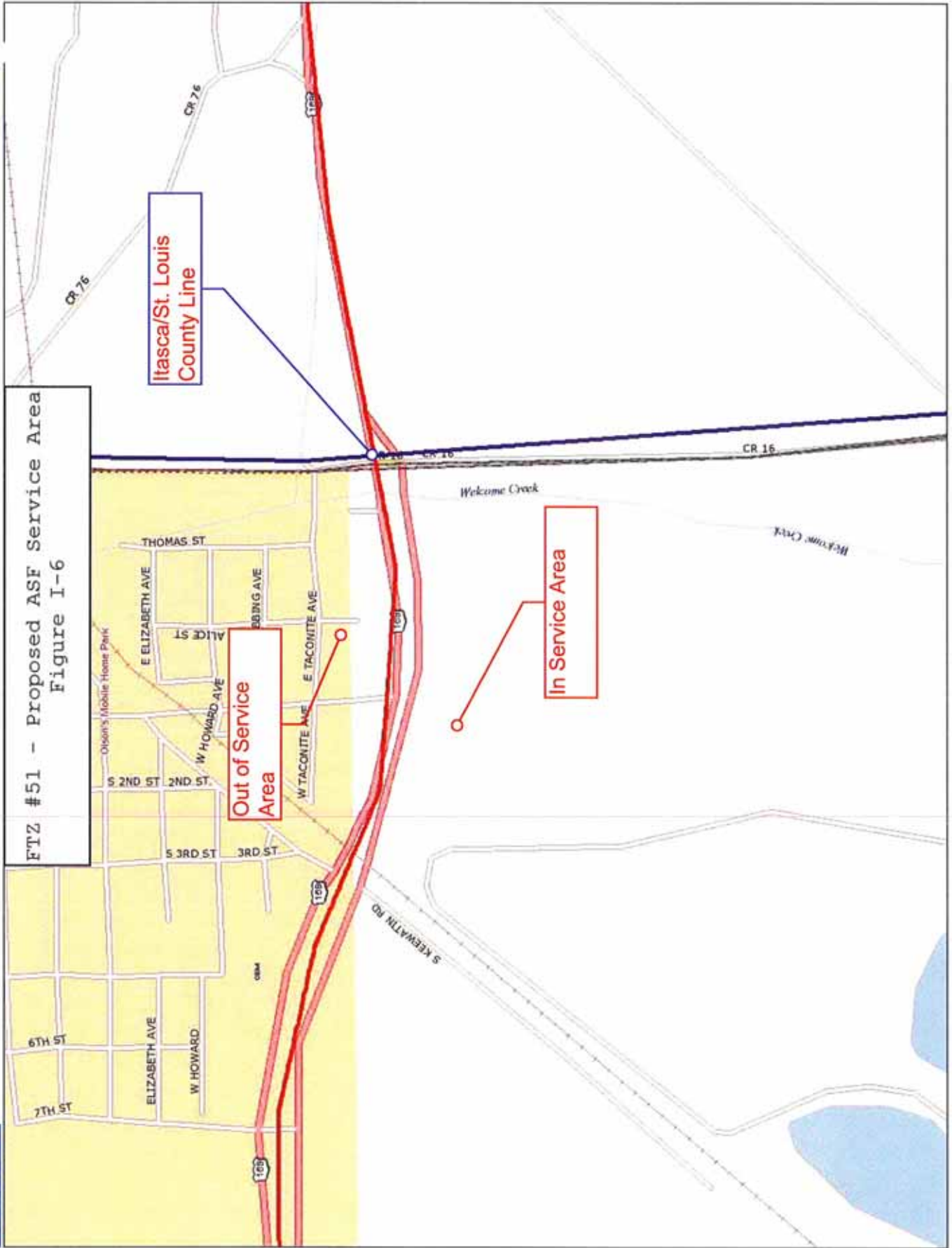
Data use subject to license.

© DeLorme, DeLorme Street Atlas USA® 2009.

www.delorme.com

North Arrow
MN (0.2° E)

Scale Bar
0 1/4 1/2 3/4 1 1 1/4 mi
Data Zoom 12-0



FTZ #51 - Proposed ASF Service Area
Figure I-6

Itasca/St. Louis
County Line

Out of Service
Area

In Service Area

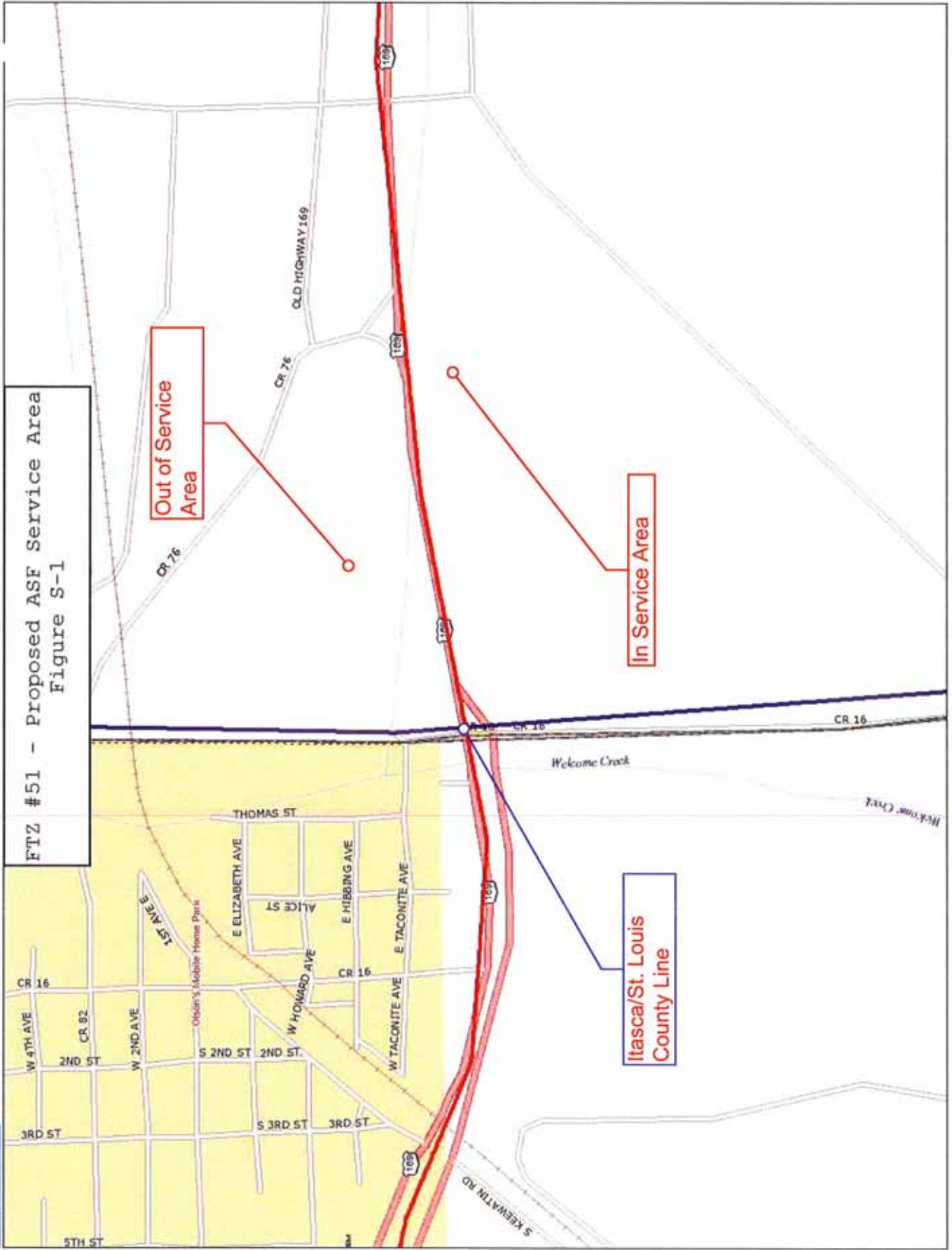
Data use subject to license.

© DeLorme, DeLorme Street Atlas USA © 2009.

www.delorme.com

MN (0.1° E)

Data Zoom 14-4



FTZ #51 - Proposed ASF Service Area
Figure S-1

Out of Service Area

In Service Area

Itasca/St. Louis County Line

Data use subject to license.

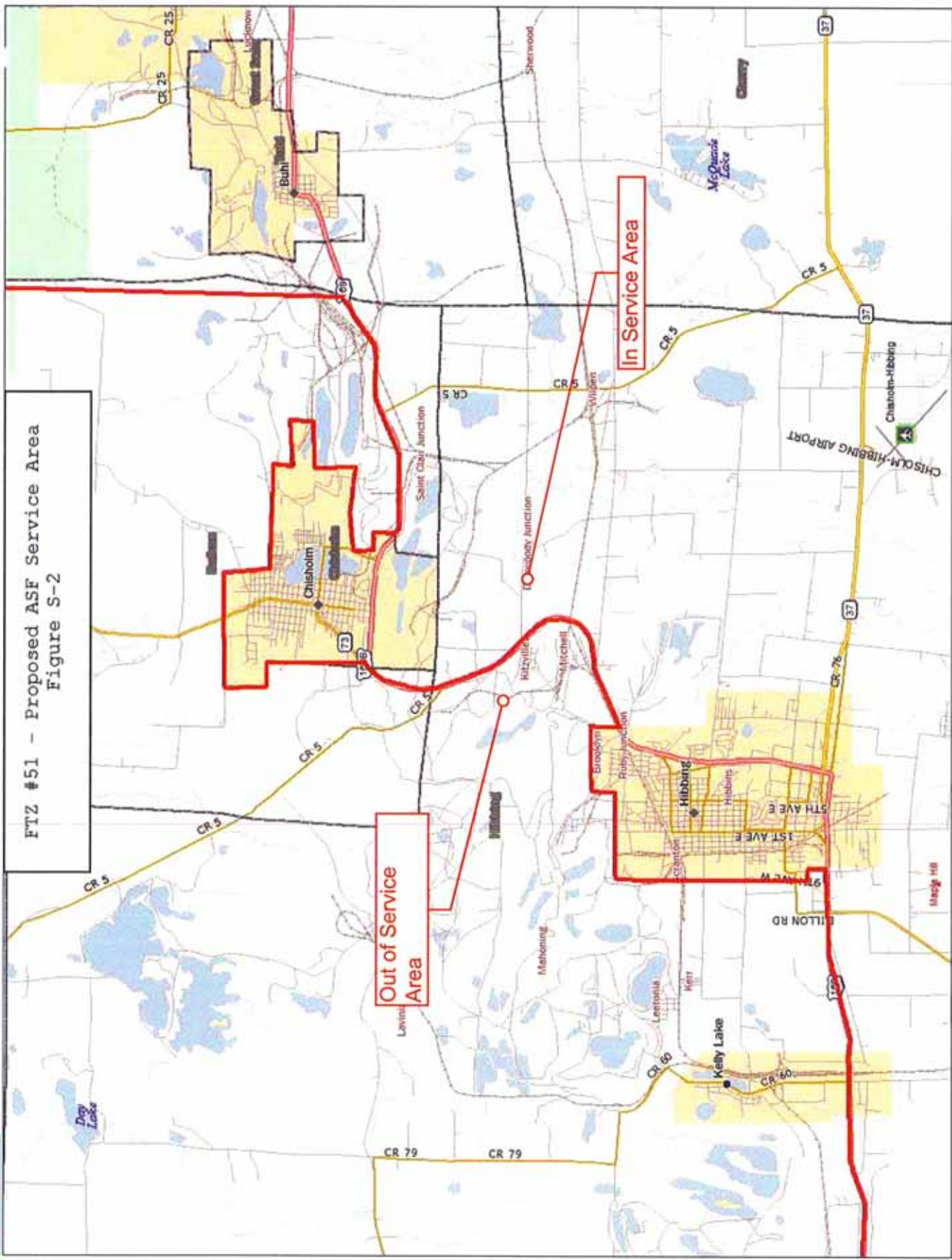
© DeLorme, DeLorme Street Atlas USA © 2009

www.delorme.com

North Arrow
MN (0.1° E)



Data Zoom 14-4

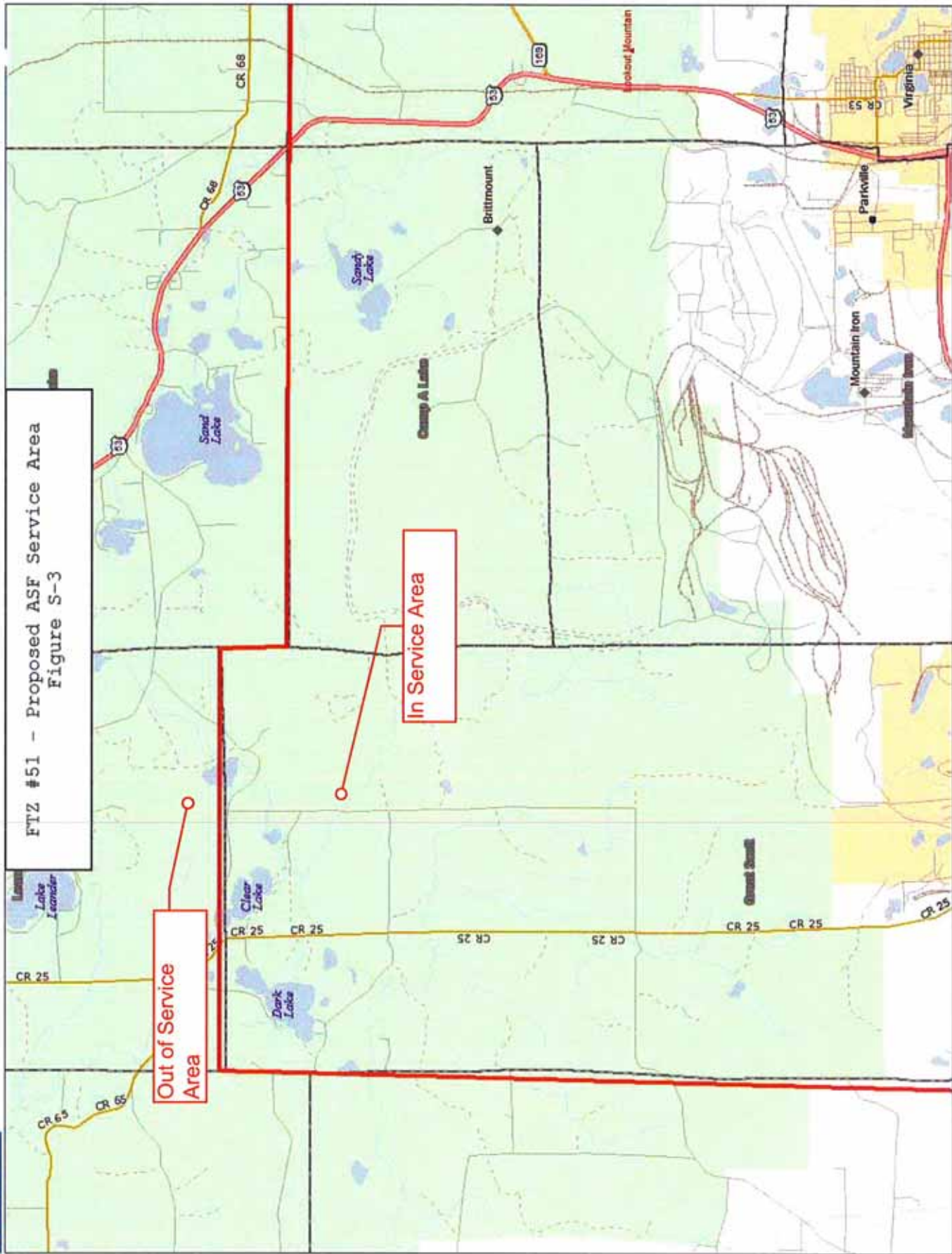


FTZ #51 - Proposed ASF Service Area
Figure S-2

Out of Service Area

In Service Area



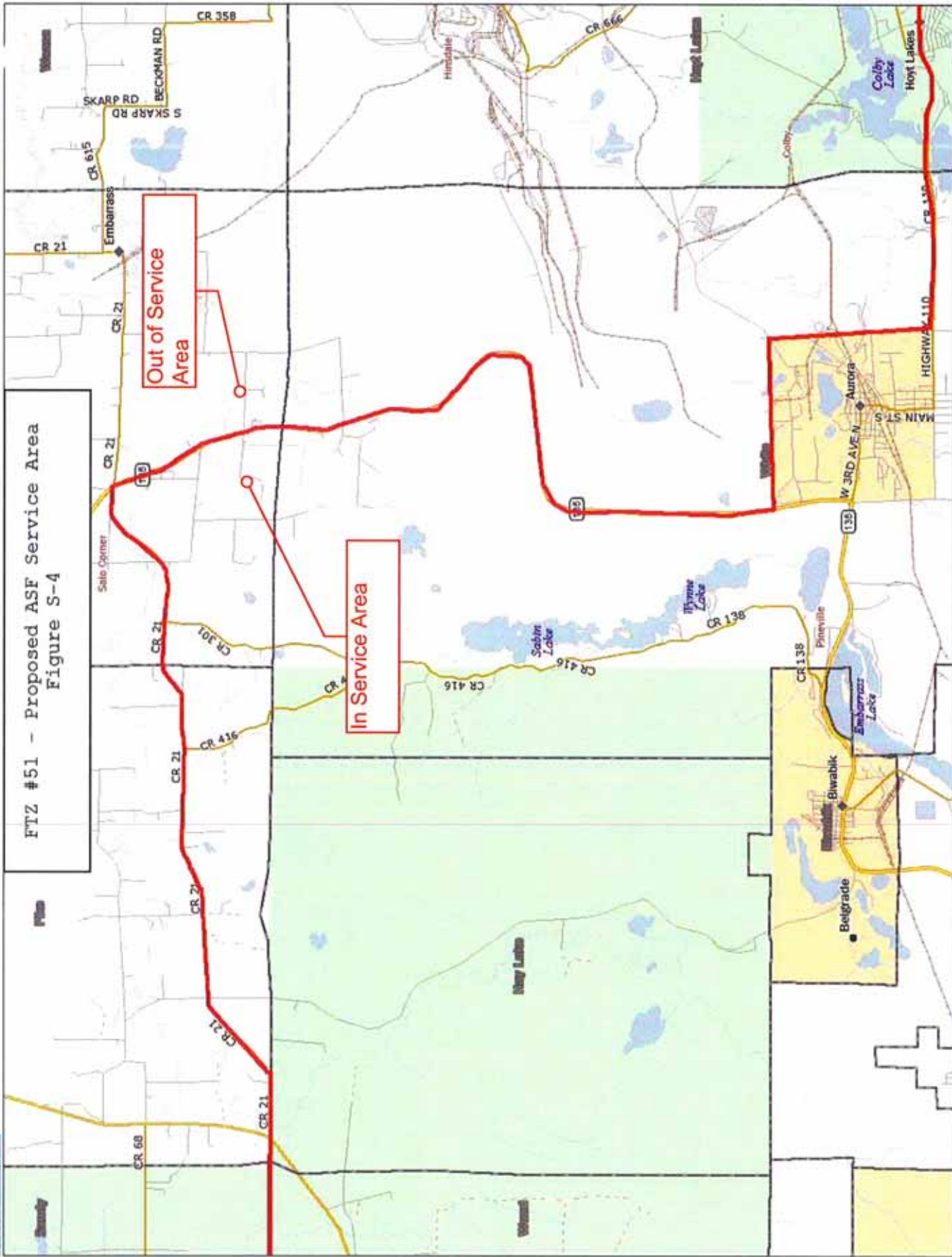


FTZ #51 - Proposed ASF Service Area
Figure S-3

Out of Service Area

In Service Area





FTZ #51 - Proposed ASF Service Area
Figure S-4

Out of Service Area

In Service Area

Data use subject to license.

© Delorme, DeLorme Street Atlas USA® 2009.

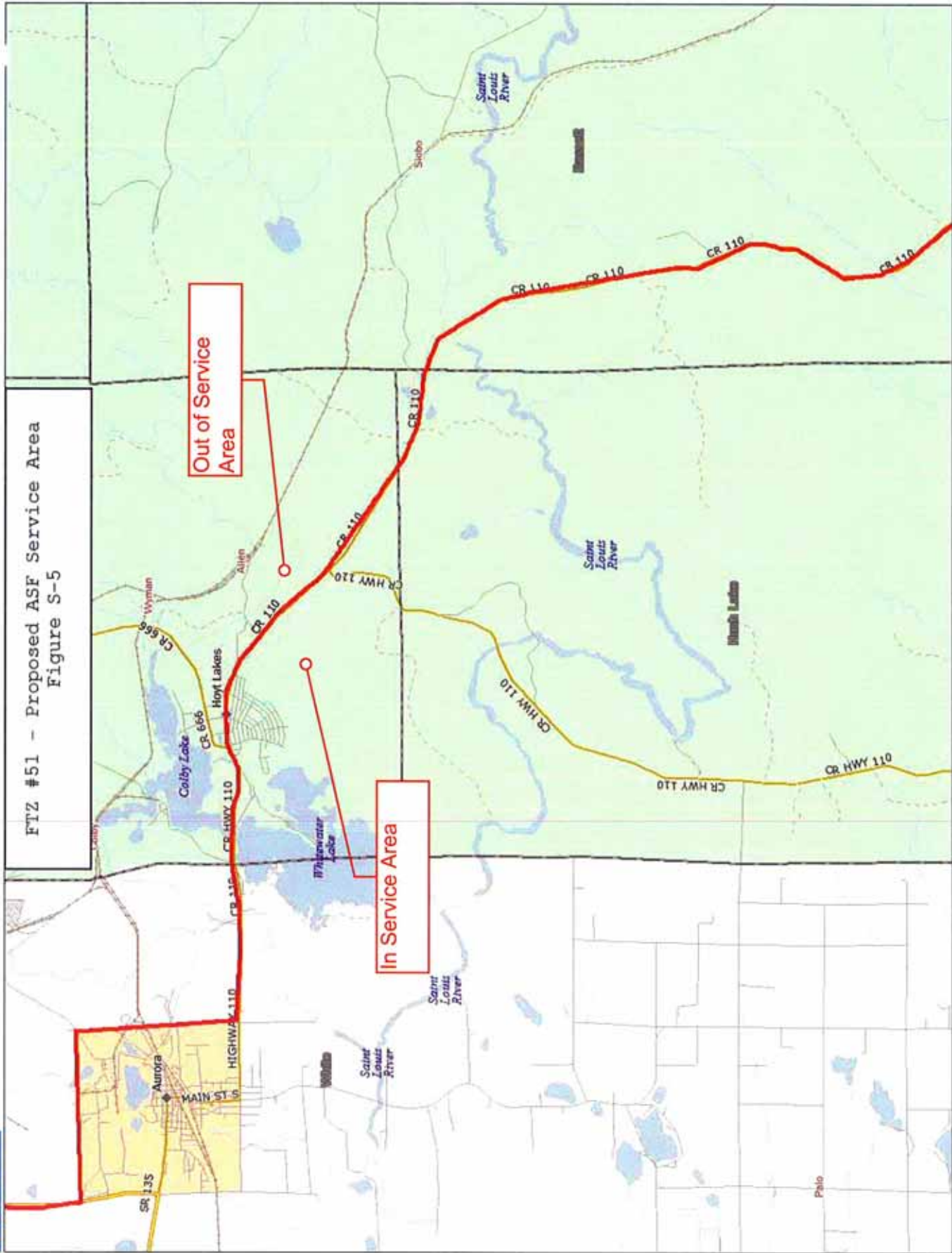
www.delorme.com

mi
0 1/2 1 1 1/2 2 2 1/2
Data Zoom 11-0



MN (0.7° W)

FTZ #51 - Proposed ASF Service Area
Figure S-5



Data use subject to license.

© Delorme, DeLorme Street Atlas USA® 2009.

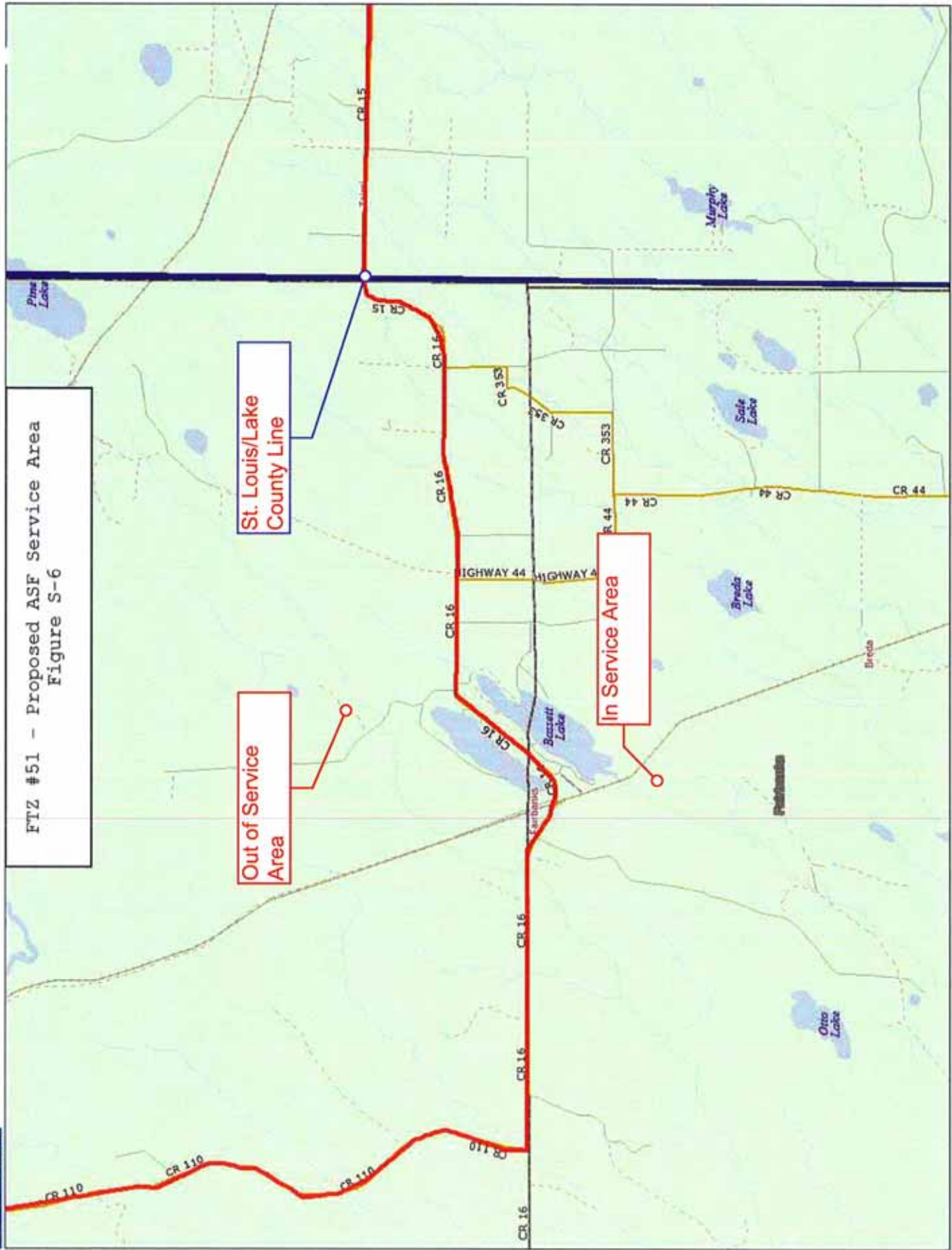
www.delorme.com



MN (0.8° W)



Data Zoom 11-0



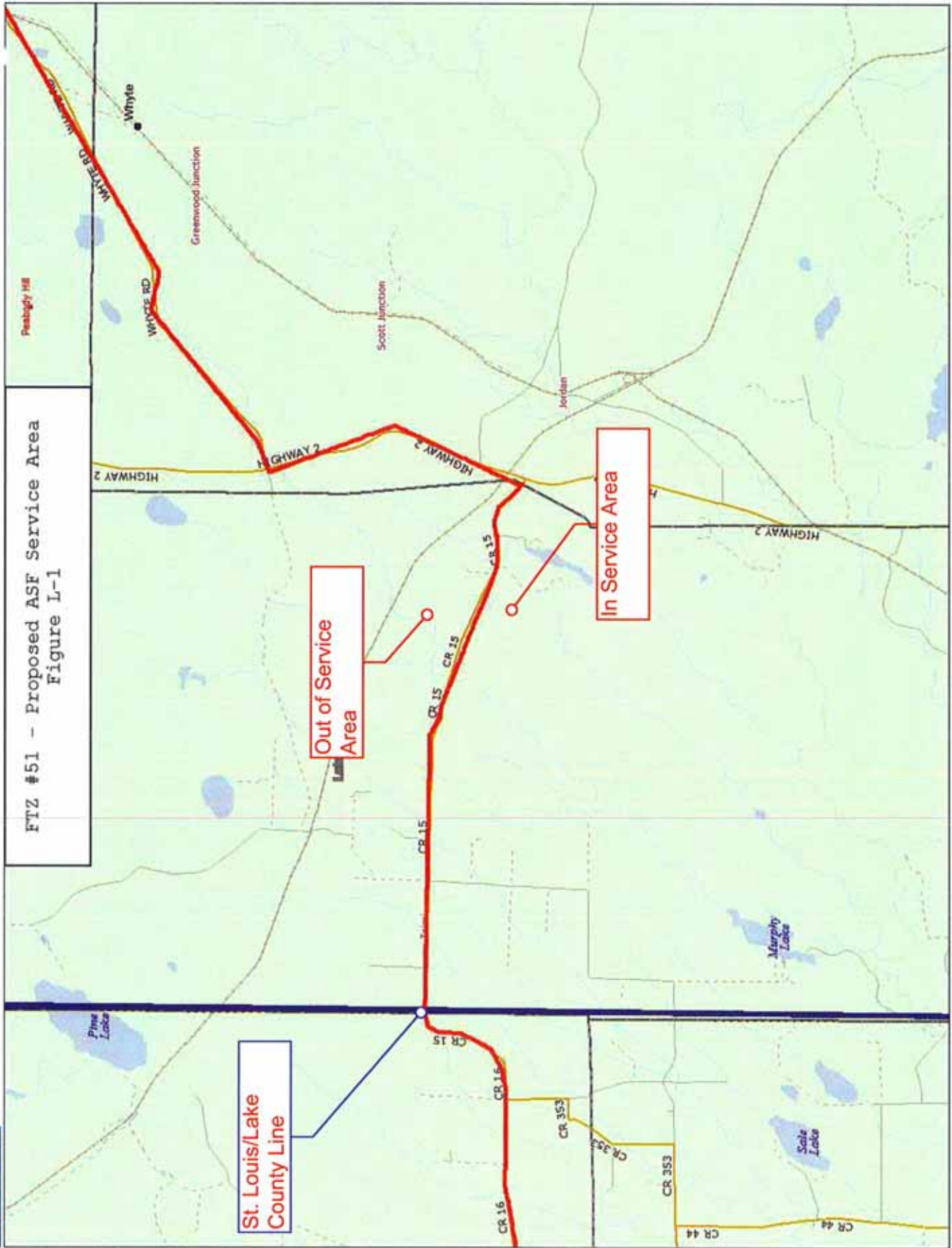
FTZ #51 - Proposed ASF Service Area
Figure S-6

St. Louis/Lake
County Line

Out of Service
Area

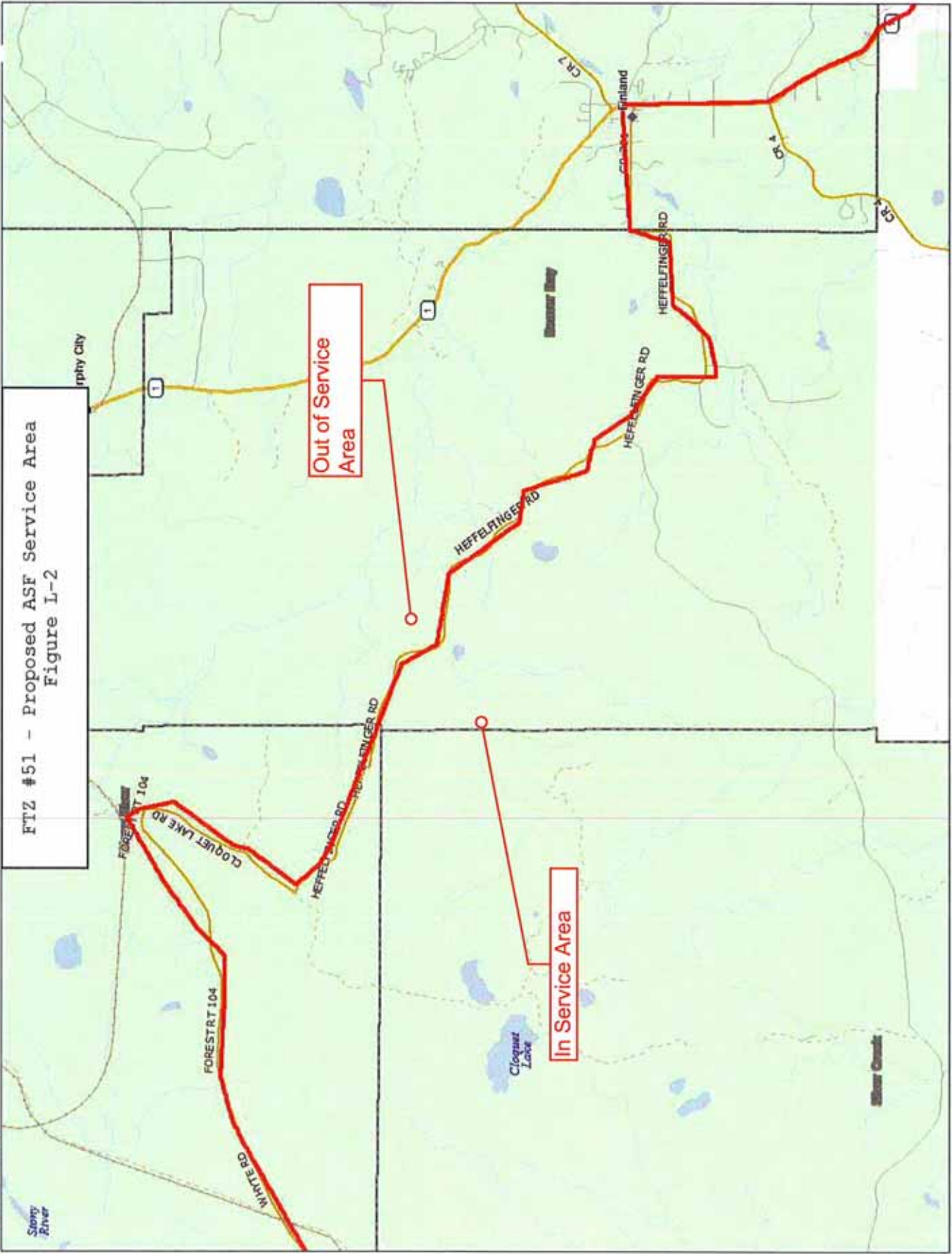
In Service Area





FTZ #51 - Proposed ASF Service Area
Figure L-1





FTZ #51 - Proposed ASF Service Area
Figure I-2

Data use subject to license.

© DeLorme. DeLorme Street Atlas USA® 2009.

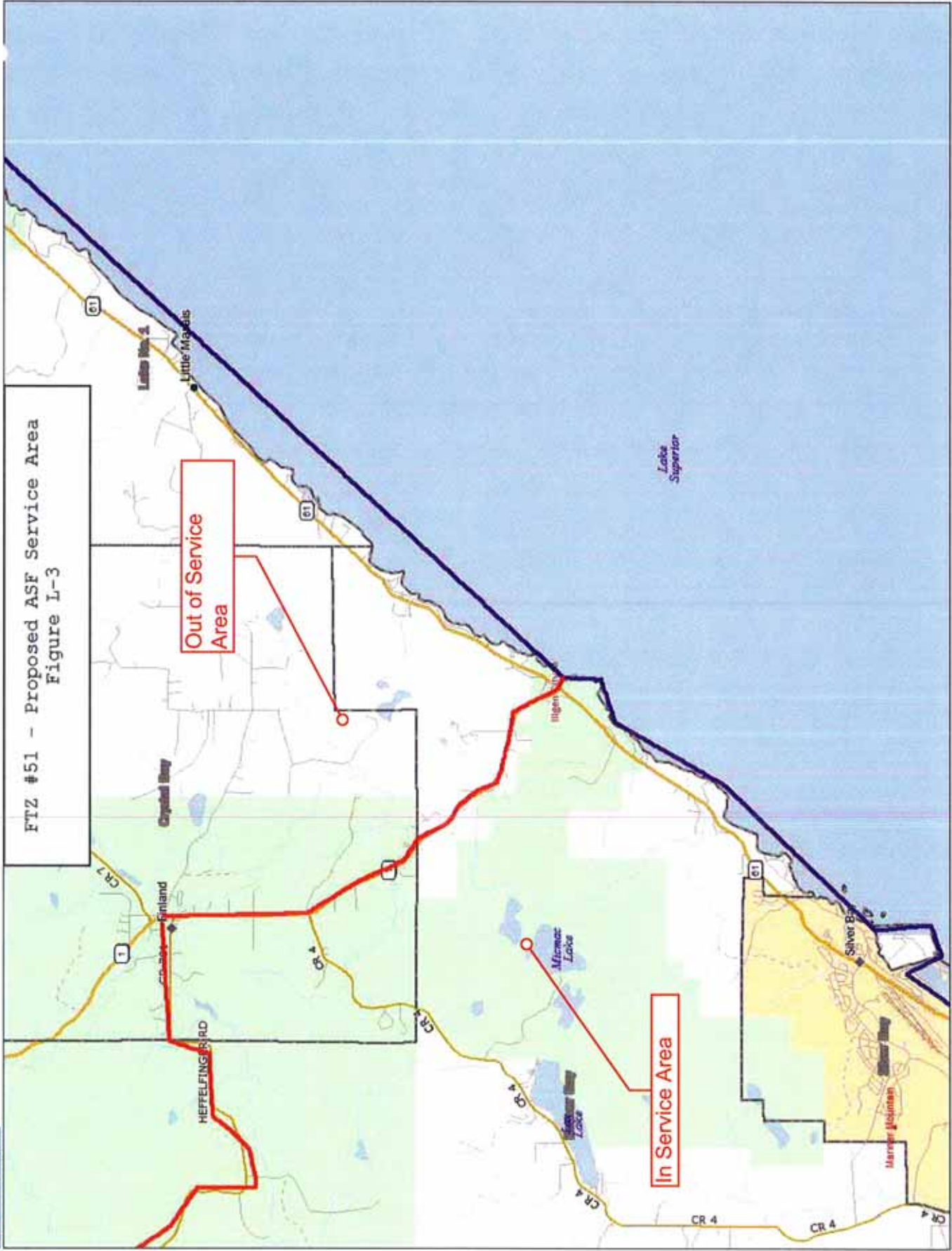
www.delorme.com



MN (1.5° W)



Data Zoom 11-0



FTZ #51 - Proposed ASF Service Area
Figure L-3

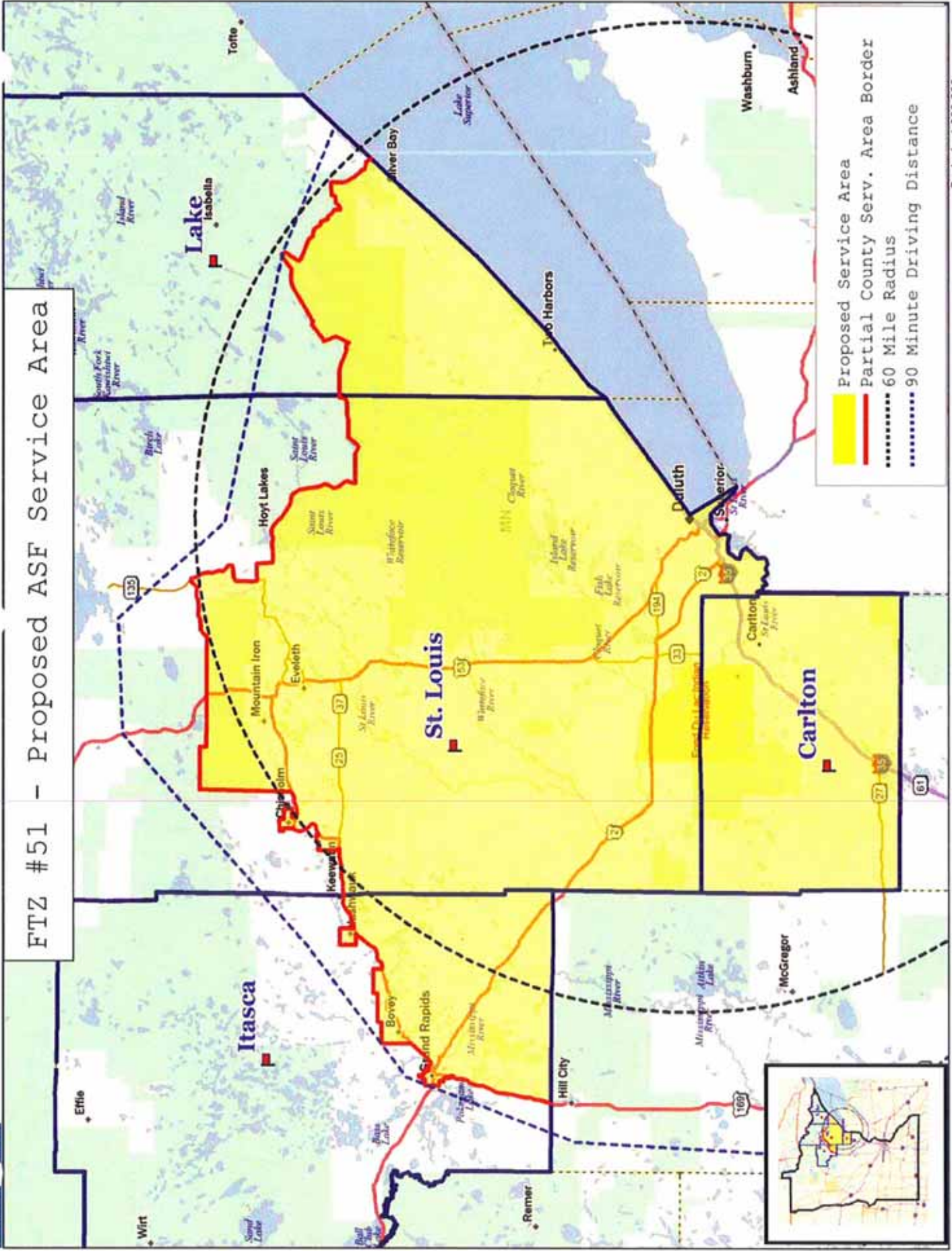
Out of Service Area

In Service Area



Data use subject to license.
© DeLorme, DeLorme Street Atlas USA® 2009.
www.delorme.com

FTZ #51 - Proposed ASF Service Area



- Proposed Service Area
- Partial County Serv. Area Border
- 60 Mile Radius
- 90 Minute Driving Distance

Scale 1 : 1,000,000



Data Zoom 7-6

TM

www.delorme.com

Data use subject to license.

© DeLorme, DeLorme Street Atlas USA® 2009.

www.delorme.com