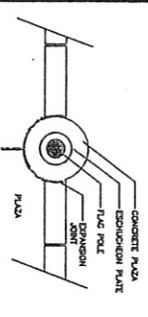
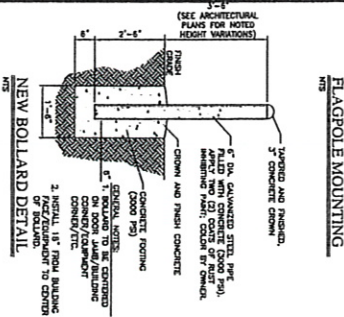
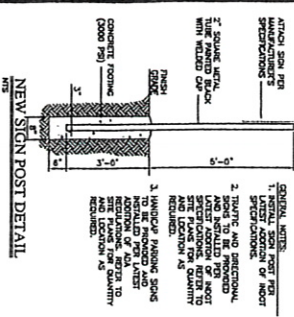
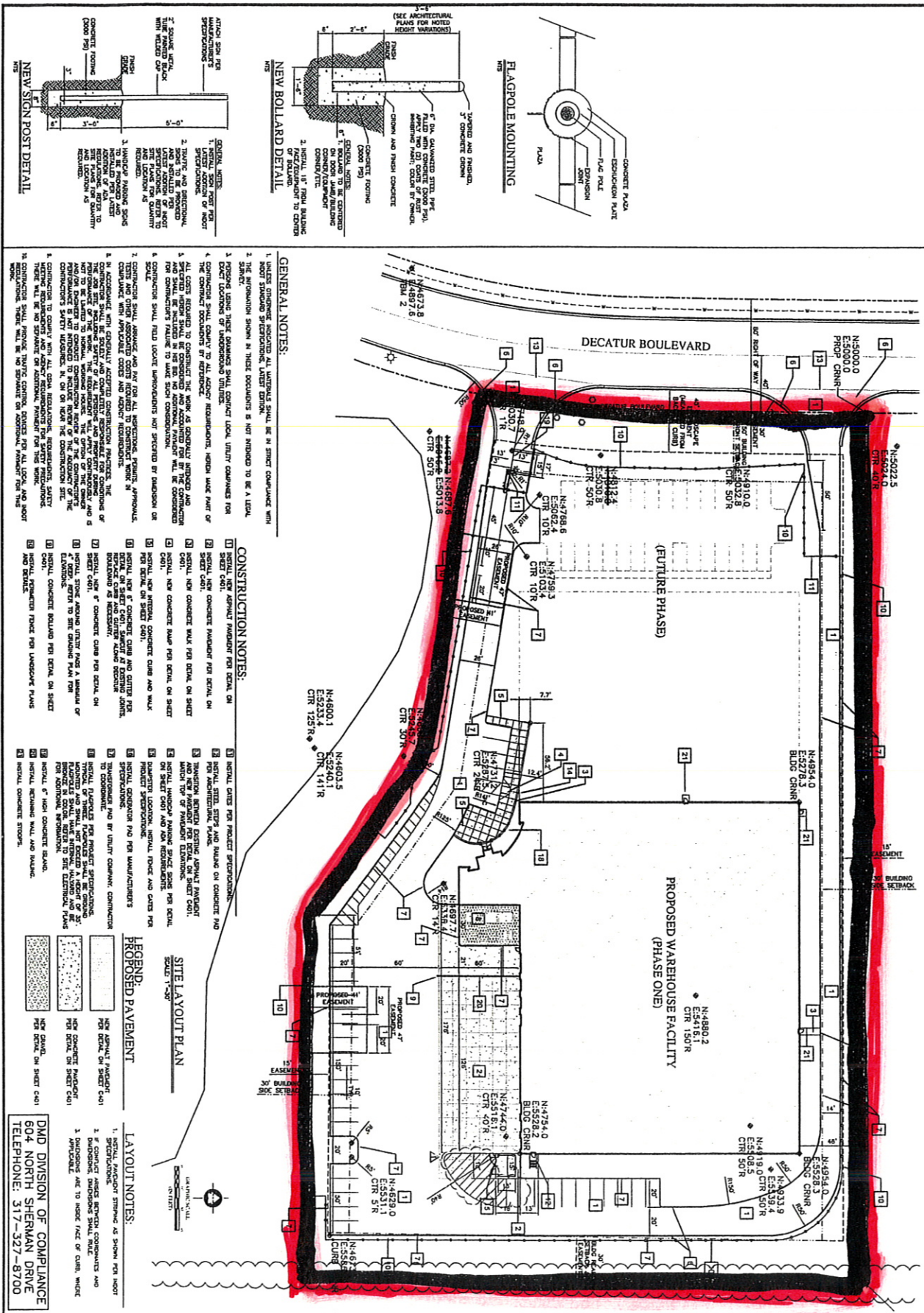


Exhibit B: Sentry FTZ Application-Site Plan



GENERAL NOTES:

1. UNLESS OTHERWISE INDICATED ALL MATERIALS SHALL BE IN STRICT COMPLIANCE WITH THE LATEST EDITION OF THE SPECIFICATIONS.
2. THE PREPARATION SHOWN IN THESE CONDITIONS IS NOT INTENDED TO BE A LEGAL DESCRIPTION OF THE PROPERTY.
3. PROPOSED LINES SHALL BE CONSIDERED AS NOT TO BE A LEGAL DESCRIPTION OF THE PROPERTY.
4. CONTRACTOR SHALL OBTAIN ALL NECESSARY PERMITS AND APPROVALS FROM ALL APPLICABLE AGENCIES AND AGENCIES.
5. ALL COSTS FOR CONSTRUCTION SHALL BE THE RESPONSIBILITY OF THE CONTRACTOR AND SHALL BE INCLUDED IN THE BID PRICE.
6. CONTRACTOR SHALL MAINTAIN ACCESS TO ALL ADJACENT PROPERTIES AT ALL TIMES.
7. CONTRACTOR SHALL MAINTAIN ACCESS TO ALL ADJACENT PROPERTIES AT ALL TIMES.
8. CONTRACTOR SHALL MAINTAIN ACCESS TO ALL ADJACENT PROPERTIES AT ALL TIMES.
9. CONTRACTOR SHALL MAINTAIN ACCESS TO ALL ADJACENT PROPERTIES AT ALL TIMES.
10. CONTRACTOR SHALL MAINTAIN ACCESS TO ALL ADJACENT PROPERTIES AT ALL TIMES.
11. CONTRACTOR SHALL MAINTAIN ACCESS TO ALL ADJACENT PROPERTIES AT ALL TIMES.
12. CONTRACTOR SHALL MAINTAIN ACCESS TO ALL ADJACENT PROPERTIES AT ALL TIMES.
13. CONTRACTOR SHALL MAINTAIN ACCESS TO ALL ADJACENT PROPERTIES AT ALL TIMES.
14. CONTRACTOR SHALL MAINTAIN ACCESS TO ALL ADJACENT PROPERTIES AT ALL TIMES.
15. CONTRACTOR SHALL MAINTAIN ACCESS TO ALL ADJACENT PROPERTIES AT ALL TIMES.
16. CONTRACTOR SHALL MAINTAIN ACCESS TO ALL ADJACENT PROPERTIES AT ALL TIMES.
17. CONTRACTOR SHALL MAINTAIN ACCESS TO ALL ADJACENT PROPERTIES AT ALL TIMES.
18. CONTRACTOR SHALL MAINTAIN ACCESS TO ALL ADJACENT PROPERTIES AT ALL TIMES.
19. CONTRACTOR SHALL MAINTAIN ACCESS TO ALL ADJACENT PROPERTIES AT ALL TIMES.
20. CONTRACTOR SHALL MAINTAIN ACCESS TO ALL ADJACENT PROPERTIES AT ALL TIMES.

CONSTRUCTION NOTES:

1. INITIAL NEW ASPHALT PAVEMENT PER DETAIL ON SHEET C-101.
2. INITIAL NEW CONCRETE PAVEMENT PER DETAIL ON SHEET C-101.
3. INITIAL NEW CONCRETE WALK PER DETAIL ON SHEET C-101.
4. INITIAL NEW CONCRETE WALK PER DETAIL ON SHEET C-101.
5. INITIAL NEW CONCRETE WALK PER DETAIL ON SHEET C-101.
6. INITIAL NEW CONCRETE WALK PER DETAIL ON SHEET C-101.
7. INITIAL NEW CONCRETE WALK PER DETAIL ON SHEET C-101.
8. INITIAL NEW CONCRETE WALK PER DETAIL ON SHEET C-101.
9. INITIAL NEW CONCRETE WALK PER DETAIL ON SHEET C-101.
10. INITIAL NEW CONCRETE WALK PER DETAIL ON SHEET C-101.
11. INITIAL NEW CONCRETE WALK PER DETAIL ON SHEET C-101.
12. INITIAL NEW CONCRETE WALK PER DETAIL ON SHEET C-101.
13. INITIAL NEW CONCRETE WALK PER DETAIL ON SHEET C-101.
14. INITIAL NEW CONCRETE WALK PER DETAIL ON SHEET C-101.
15. INITIAL NEW CONCRETE WALK PER DETAIL ON SHEET C-101.
16. INITIAL NEW CONCRETE WALK PER DETAIL ON SHEET C-101.
17. INITIAL NEW CONCRETE WALK PER DETAIL ON SHEET C-101.
18. INITIAL NEW CONCRETE WALK PER DETAIL ON SHEET C-101.
19. INITIAL NEW CONCRETE WALK PER DETAIL ON SHEET C-101.
20. INITIAL NEW CONCRETE WALK PER DETAIL ON SHEET C-101.

LEGEND:

PROPOSED PAVEMENT

NEW ASPHALT PER DETAIL ON SHEET C-101

NEW CONCRETE PER DETAIL ON SHEET C-101

NEW CONCRETE PER DETAIL ON SHEET C-101

NEW CONCRETE PER DETAIL ON SHEET C-101

NEW CONCRETE PER DETAIL ON SHEET C-101

LAYOUT NOTES:

1. INITIAL FACILITY STRIPING AS SHOWN PER DETAIL ON SHEET C-101.
2. INITIAL FACILITY STRIPING AS SHOWN PER DETAIL ON SHEET C-101.
3. INITIAL FACILITY STRIPING AS SHOWN PER DETAIL ON SHEET C-101.
4. INITIAL FACILITY STRIPING AS SHOWN PER DETAIL ON SHEET C-101.
5. INITIAL FACILITY STRIPING AS SHOWN PER DETAIL ON SHEET C-101.
6. INITIAL FACILITY STRIPING AS SHOWN PER DETAIL ON SHEET C-101.
7. INITIAL FACILITY STRIPING AS SHOWN PER DETAIL ON SHEET C-101.
8. INITIAL FACILITY STRIPING AS SHOWN PER DETAIL ON SHEET C-101.
9. INITIAL FACILITY STRIPING AS SHOWN PER DETAIL ON SHEET C-101.
10. INITIAL FACILITY STRIPING AS SHOWN PER DETAIL ON SHEET C-101.
11. INITIAL FACILITY STRIPING AS SHOWN PER DETAIL ON SHEET C-101.
12. INITIAL FACILITY STRIPING AS SHOWN PER DETAIL ON SHEET C-101.
13. INITIAL FACILITY STRIPING AS SHOWN PER DETAIL ON SHEET C-101.
14. INITIAL FACILITY STRIPING AS SHOWN PER DETAIL ON SHEET C-101.
15. INITIAL FACILITY STRIPING AS SHOWN PER DETAIL ON SHEET C-101.
16. INITIAL FACILITY STRIPING AS SHOWN PER DETAIL ON SHEET C-101.
17. INITIAL FACILITY STRIPING AS SHOWN PER DETAIL ON SHEET C-101.
18. INITIAL FACILITY STRIPING AS SHOWN PER DETAIL ON SHEET C-101.
19. INITIAL FACILITY STRIPING AS SHOWN PER DETAIL ON SHEET C-101.
20. INITIAL FACILITY STRIPING AS SHOWN PER DETAIL ON SHEET C-101.

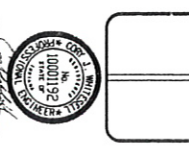
C-101

SITE LAYOUT PLAN

DMD DIVISION OF COMPLIANCE

604 NORTH SHERMAN DRIVE

TELEPHONE: 317-327-8700



Sentry Logistic Solutions

Proposed Warehouse

SITE LAYOUT PLAN



DATE	REVISION	BY
1/21/2020	ISSUE FOR PERMITS	MM
4/29/2020	ISSUE FOR PERMITS	MM
7/16/2020	ISSUE FOR PERMITS	MM
10/1/2020	ISSUE FOR PERMITS	MM
12/1/2020	ISSUE FOR PERMITS	MM
3/1/2021	ISSUE FOR PERMITS	MM