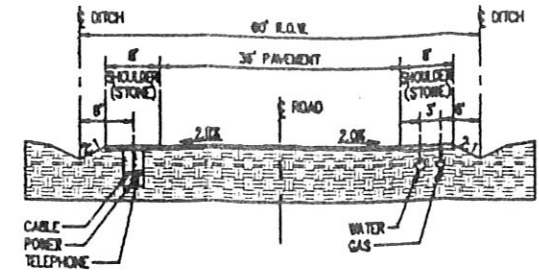
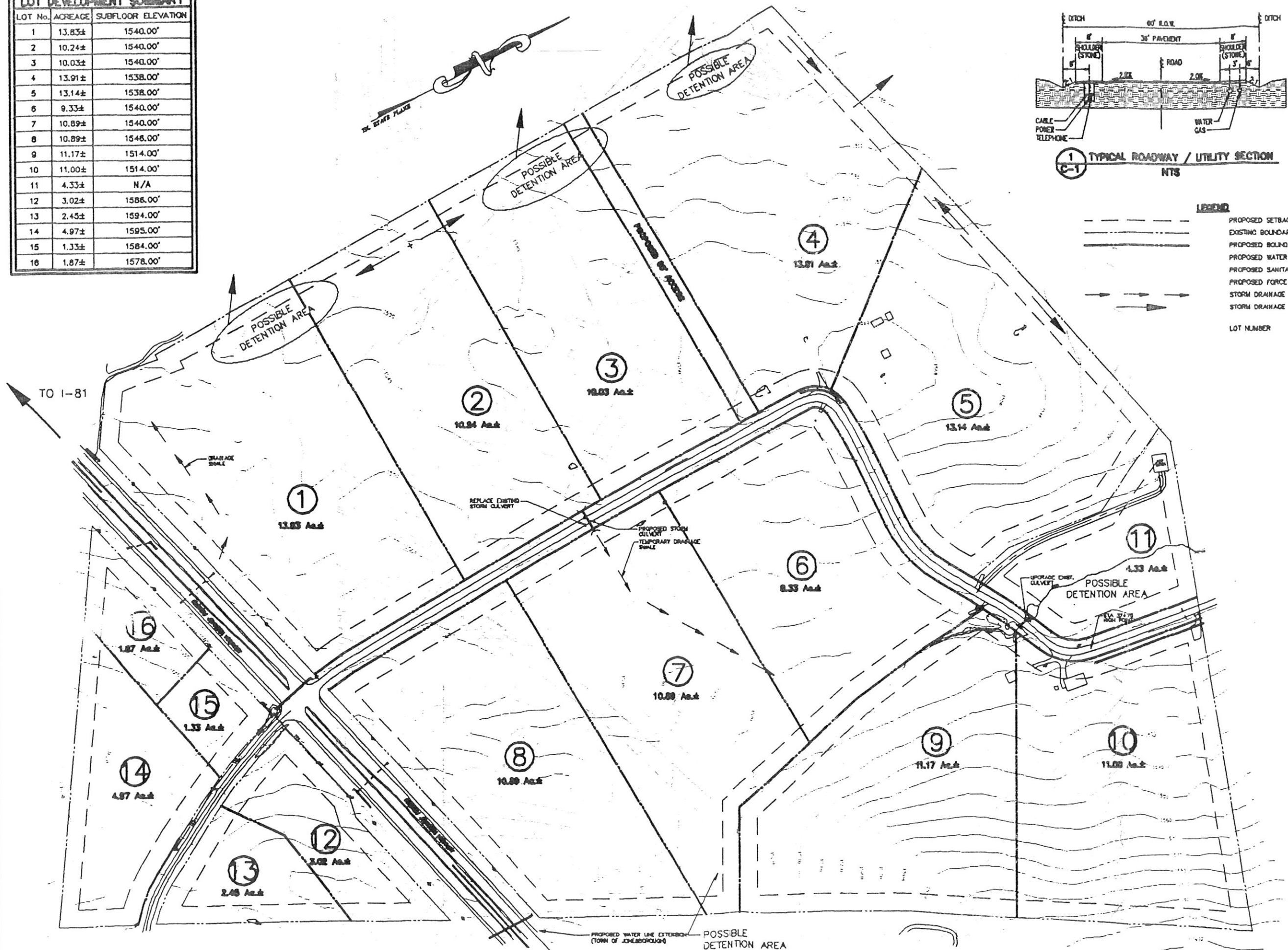


LOT DEVELOPMENT SUMMARY		
LOT No.	ACREAGE	SUBFLOOR ELEVATION
1	13.83±	1540.00'
2	10.24±	1540.00'
3	10.03±	1540.00'
4	13.91±	1538.00'
5	13.14±	1538.00'
6	9.33±	1540.00'
7	10.89±	1540.00'
8	10.89±	1546.00'
9	11.17±	1514.00'
10	11.00±	1514.00'
11	4.33±	N/A
12	3.02±	1586.00'
13	2.45±	1594.00'
14	4.97±	1595.00'
15	1.33±	1584.00'
16	1.87±	1578.00'



1 TYPICAL ROADWAY / UTILITY SECTION  
NTS

- LEGEND**
- PROPOSED SETBACKS (M1 ZONING)
  - EXISTING BOUNDARY / R.O.W.
  - PROPOSED BOUNDARY / R.O.W.
  - PROPOSED WATER LINE
  - PROPOSED SANITARY SEWER
  - PROPOSED FORCE MAIN
  - STORM DRAINAGE SWALE / DITCH
  - STORM DRAINAGE / RUNOFF DIRECTION
  - LOT NUMBER



**TH&P**  
 TYSINGER, HAMPTON & PARTNERS  
 ENGINEERS • SURVEYORS  
 ENVIRONMENTALISTS  
 3428 BRISTOL HWY.  
 JOHNSON CITY, TENNESSEE 37601  
 (423) 282-2687  
 (423) 282-1621 FAX  
 thp@tricon.net e-mail  
<http://www.tricon.net/com/thp/>

PROJECT  
**WASHINGTON COUNTY INDUSTRIAL PARK / GOINS PROPERTY**  
**135 ACRES±**

LOCATION:  
**WASHINGTON COUNTY / JONESBOROUGH**

DWG. TITLE  
**SITE DEVELOPMENT PLAN**

ISSUE DATE :	
CAD FILE: 9710900C.DWG	
SCALE : NTS	DWG. NO.
DRAWN : WWT	9710900C
CHECK : RSS	
DATE : 3/2/1999	

**NOTICE**  
 LOCATION OF ALL UTILITIES AND UNDERGROUND STRUCTURES SHOWN ARE APPROXIMATE AND ARE NOT GUARANTEED. ALL OF THE EXISTING UTILITIES AND STRUCTURES, IF IN THE CONTIGUOUS ADJACENT LOTS TO BE DETERMINED BY THE OWNER AND