

29.22 ACRES +/-

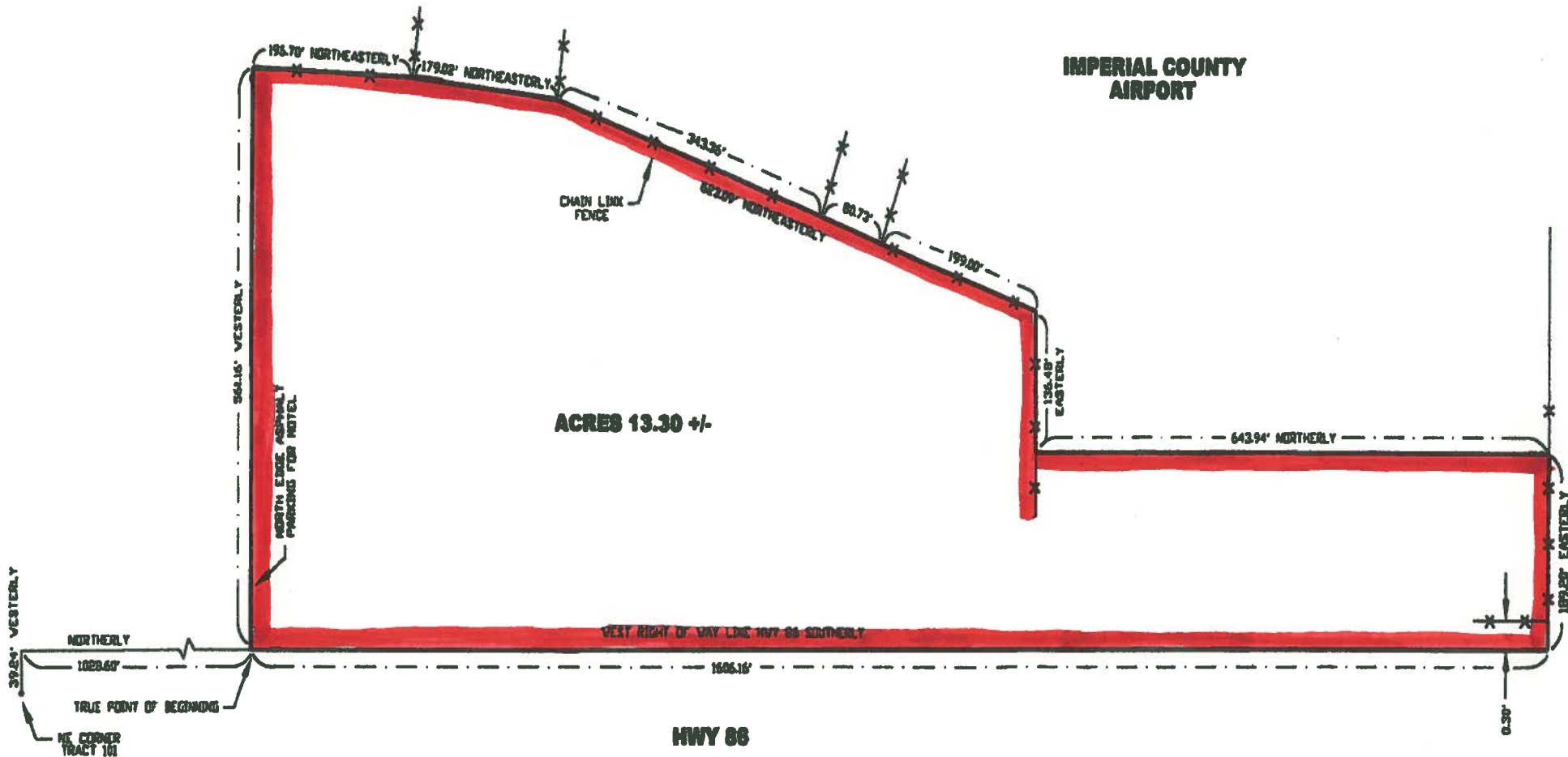
IMPERIAL COUNTY AIRPORT



NOT TO SCALE

NOTE: SEE LEGAL DESCRIPTION

PUBLIC WORKS DEPARTMENT IMPERIAL COUNTY EL CENTRO, CALIFORNIA	PROJECT: IMPERIAL COUNTY AIRPORT FREE TRADE ZONE-EXHIBIT 'A'	DATE: 04/25/01
	DWG No. M-847	DRAWN: H. VALDE
SCALE: NTS		DWG No. M-847 1



IMPERIAL COUNTY AIRPORT

ACRES 13.30 +/-

HWY 86

39.84' VESTERLY
 NORTHERLY
 1088.60'
 TRUE POINT OF BEGINNING
 NE CORNER TRACT 101



NOT TO SCALE

NOTE: SEE LEGAL DESCRIPTION

PUBLIC WORKS DEPARTMENT IMPERIAL COUNTY EL CENTRO, CALIFORNIA	PROJECT : IMPERIAL COUNTY AIRPORT FREE TRADE ZONE-EXHIBIT "B"	DATE: 04/25/01
	SCALE: NTS	DRAWN: H. VALDE
DWG No. M-847 2		DWG No. M-847 2