

BOOK 6

SE 1/4 SW 1/4 SEC 17 T36S R5W W.M.

JOSEPHINE COUNTY

1"=100'

36 5 17-34
GRANTS PASS

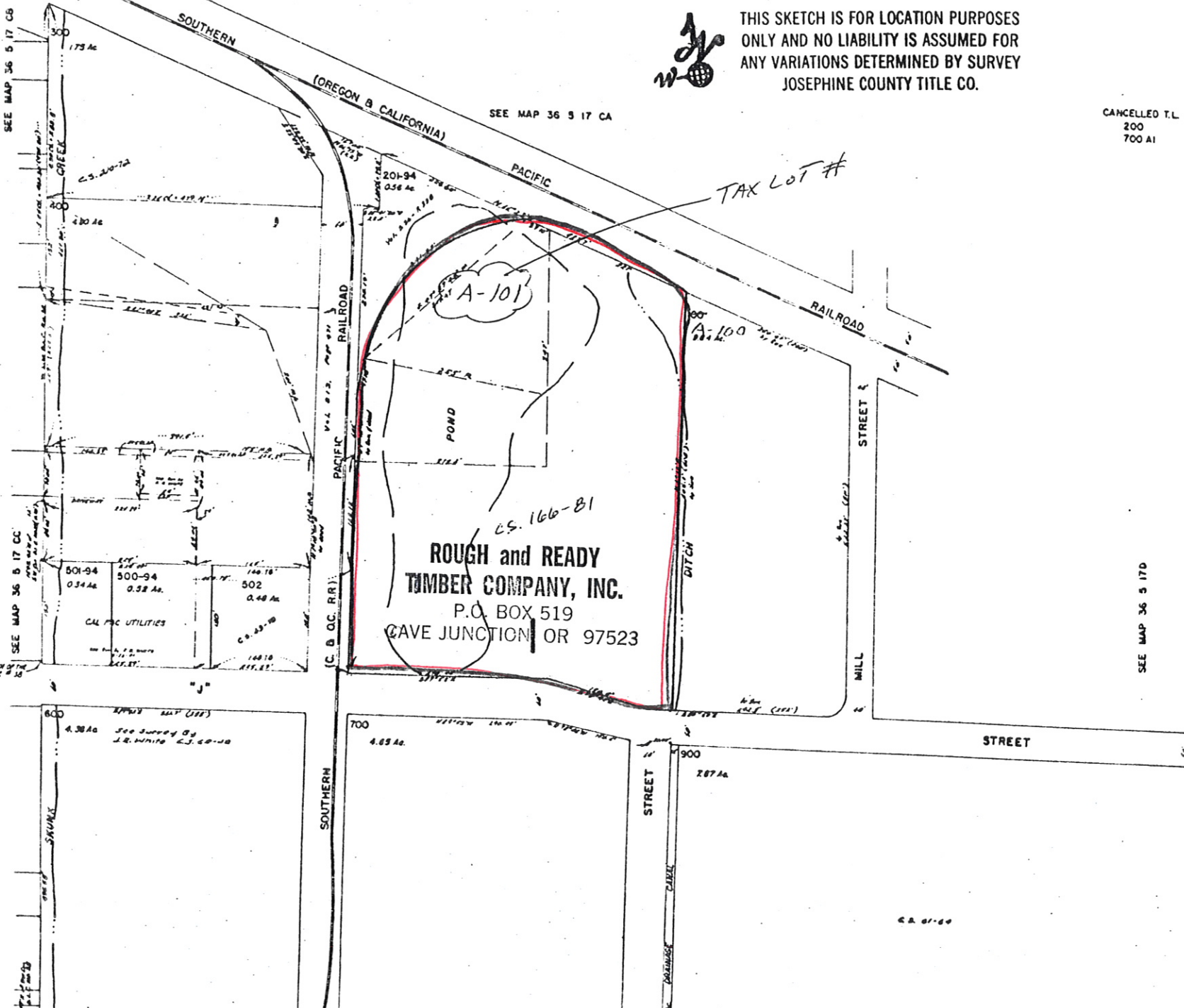


THIS SKETCH IS FOR LOCATION PURPOSES
ONLY AND NO LIABILITY IS ASSUMED FOR
ANY VARIATIONS DETERMINED BY SURVEY
JOSEPHINE COUNTY TITLE CO.

CANCELLED T.L.
200
700 A1

10-77 N.E.

SEE MAP 36 5 17 CB



ORIGIN

SEE MAP 36 B 17 CC

ELEVATIONS NORTH OF THE
S.R. CORNER 34 DICK 11 10

SEE MAP 36 5 17 CA

**ROUGH and READY
TIMBER COMPANY, INC.**
P.O. BOX 519
CAVE JUNCTION OR 97523

SEE MAP 36 5 17 D