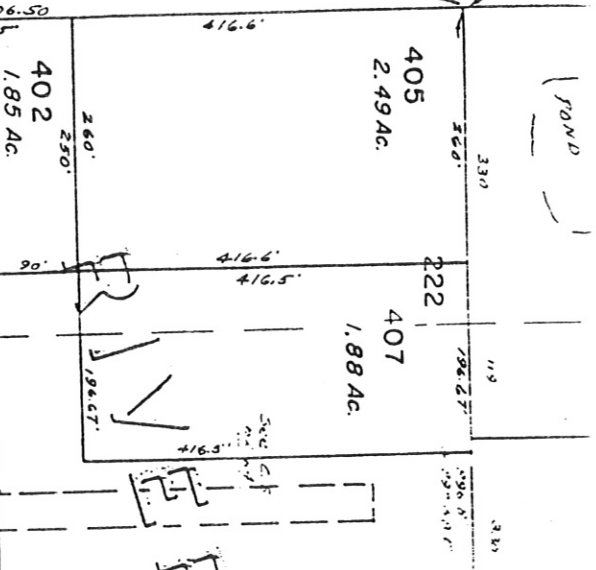
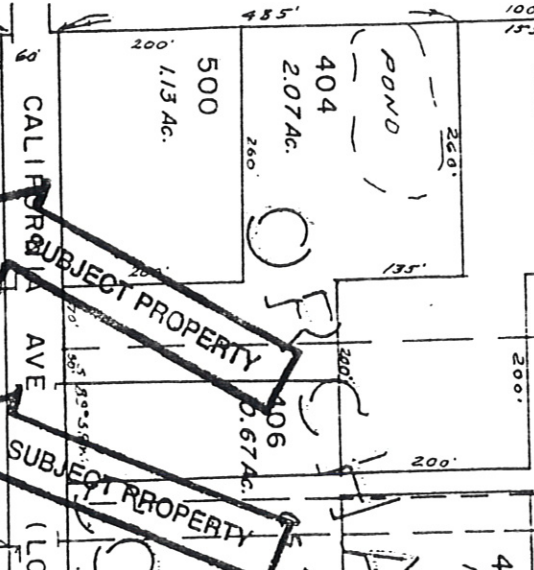
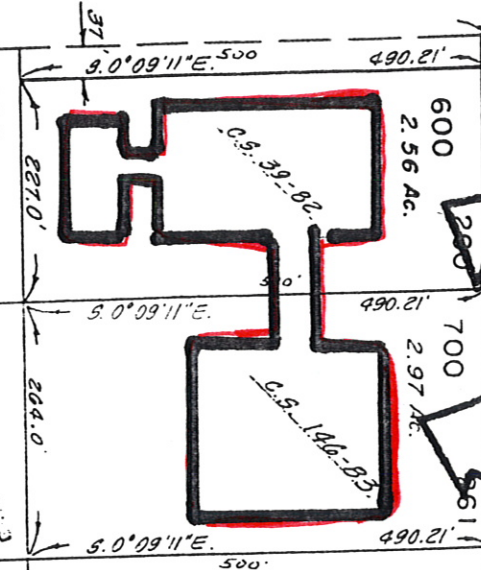


26.58' By Survey

C.S. 39-82

1184.04'
900
12.65 Ac.
1/4 Cor.



SUBJECT PROPERTY

SUBJECT PROPERTY

CALIFORNIA AVE
(LOS ANGELES ST)

WARD

COMPANY'S

THIS SKETCH IS FOR LOCATION PURPOSES ONLY AND NO LIABILITY IS ASSUMED FOR ANY VARIATIONS DETERMINED BY SURVEY JOSEPHINE COUNTY TITLE

35-6-25-2

INTERSTATE

HIGHWAY

FIRST

SUBD

EXHIBIT #1

50°06'46"E
518°32'52"E
316.23'

50°06'46"E
269.61'

5

1001-5
5.02

3

1.50'

271.8'

263'

262'

800
4.50 Ac.

490.21'

600
2.56 Ac.

490.21'

5.0°09'11"E

5.0°09'11"E

9.0°09'11"E

380'

173'

219'

220'

221'

222'

223'

3.83'

1.19'

3.30'

60'

665'

1006.50

WARD

33-82

401
0.67 Ac.

408
0.69 Ac.

403
1.93 Ac.

406
0.67 Ac.

404
2.07 Ac.

500
1.13 Ac.

263'

262'

800
4.50 Ac.

490.21'

600
2.56 Ac.

490.21'

5.0°09'11"E

5.0°09'11"E

9.0°09'11"E

380'

173'

219'

220'

221'

222'

223'

3.83'

1.19'

3.30'

60'

665'

1006.50

WARD

33-82

401
0.67 Ac.

408
0.69 Ac.

403
1.93 Ac.

406
0.67 Ac.

404
2.07 Ac.

500
1.13 Ac.

263'

262'

800
4.50 Ac.

490.21'

600
2.56 Ac.

490.21'

5.0°09'11"E

5.0°09'11"E

9.0°09'11"E

380'

173'

219'

220'

221'

222'

223'

3.83'

1.19'

3.30'

60'

665'

1006.50

WARD

33-82

401
0.67 Ac.

408
0.69 Ac.

403
1.93 Ac.

406
0.67 Ac.

404
2.07 Ac.

500
1.13 Ac.

263'

262'

800
4.50 Ac.

490.21'

600
2.56 Ac.

490.21'

5.0°09'11"E

5.0°09'11"E

9.0°09'11"E

380'

173'

219'

220'

221'

222'

223'

3.83'

1.19'

3.30'

60'

665'

1006.50

WARD

33-82

401
0.67 Ac.

408
0.69 Ac.

403
1.93 Ac.

406
0.67 Ac.

404
2.07 Ac.

500
1.13 Ac.

263'

262'

800
4.50 Ac.

490.21'

600
2.56 Ac.

490.21'

5.0°09'11"E

5.0°09'11"E

9.0°09'11"E

380'

173'

219'

220'

221'

222'

223'

3.83'

1.19'

3.30'

60'

665'

1006.50

WARD

33-82

401
0.67 Ac.

408
0.69 Ac.

403
1.93 Ac.

406
0.67 Ac.

404
2.07 Ac.

500
1.13 Ac.

263'

262'

800
4.50 Ac.

490.21'

600
2.56 Ac.

490.21'

5.0°09'11"E

5.0°09'11"E

9.0°09'11"E

380'

173'

219'

220'

221'

222'

223'

3.83'

1.19'

3.30'

60'

665'

1006.50

WARD

33-82

401
0.67 Ac.

408
0.69 Ac.

403
1.93 Ac.

406
0.67 Ac.

404
2.07 Ac.

500
1.13 Ac.

263'

262'

800
4.50 Ac.

490.21'

600
2.56 Ac.

490.21'

5.0°09'11"E

5.0°09'11"E

9.0°09'11"E

380'

173'

219'

220'

221'

222'

223'

3.83'

1.19'

3.30'

60'

665'

1006.50

WARD

33-82

401
0.67 Ac.

408
0.69 Ac.

403
1.93 Ac.

406
0.67 Ac.

404
2.07 Ac.

500
1.13 Ac.

263'

262'

800
4.50 Ac.

490.21'

600
2.56 Ac.

490.21'

5.0°09'11"E

5.0°09'11"E

9.0°09'11"E

380'

173'

219'

220'

221'

222'

223'

3.83'

1.19'

3.30'

60'

665'

1006.50

WARD

33-82

401
0.67 Ac.

408
0.69 Ac.

403
1.93 Ac.

406
0.67 Ac.

404
2.07 Ac.

500
1.13 Ac.

263'

262'

800
4.50 Ac.

490.21'

600
2.56 Ac.

490.21'

5.0°09'11"E

5.0°09'11"E

9.0°09'11"E

380'

173'

219'

220'

221'

222'

223'

3.83'