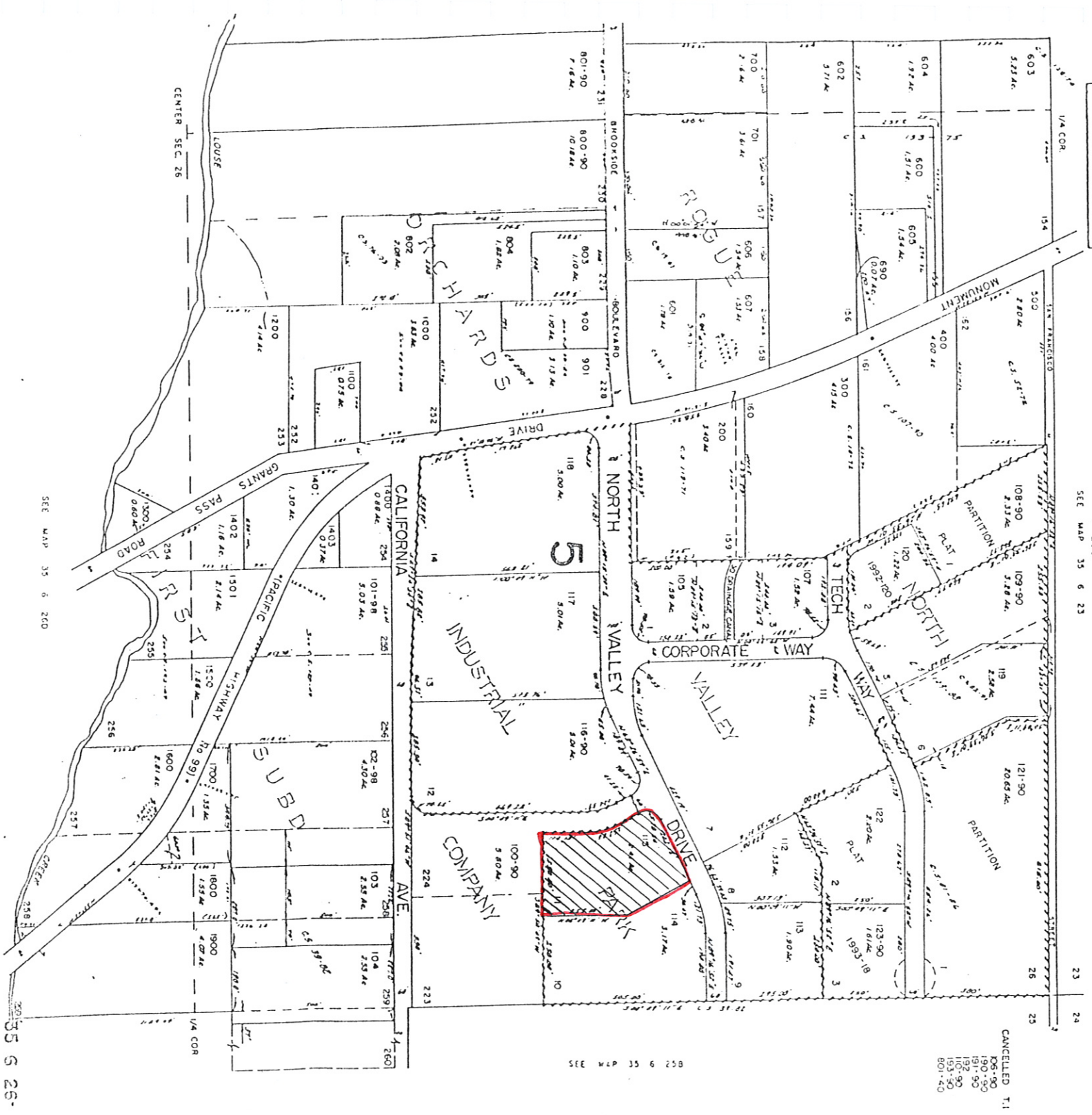


This map was prepared for  
 assessment purposes only.

NE/4 SEC. 26 T.35S. R.6W. W.M.  
 JOSEPHINE COUNTY

SEE MAP 35 6 23

35 6 26-1



SEE MAP 35 6 200

35 6 26-

CANCELLED T.1  
 108-90  
 110-90  
 191-90  
 192-90  
 193-90  
 601-20

SEE MAP 35 6 258