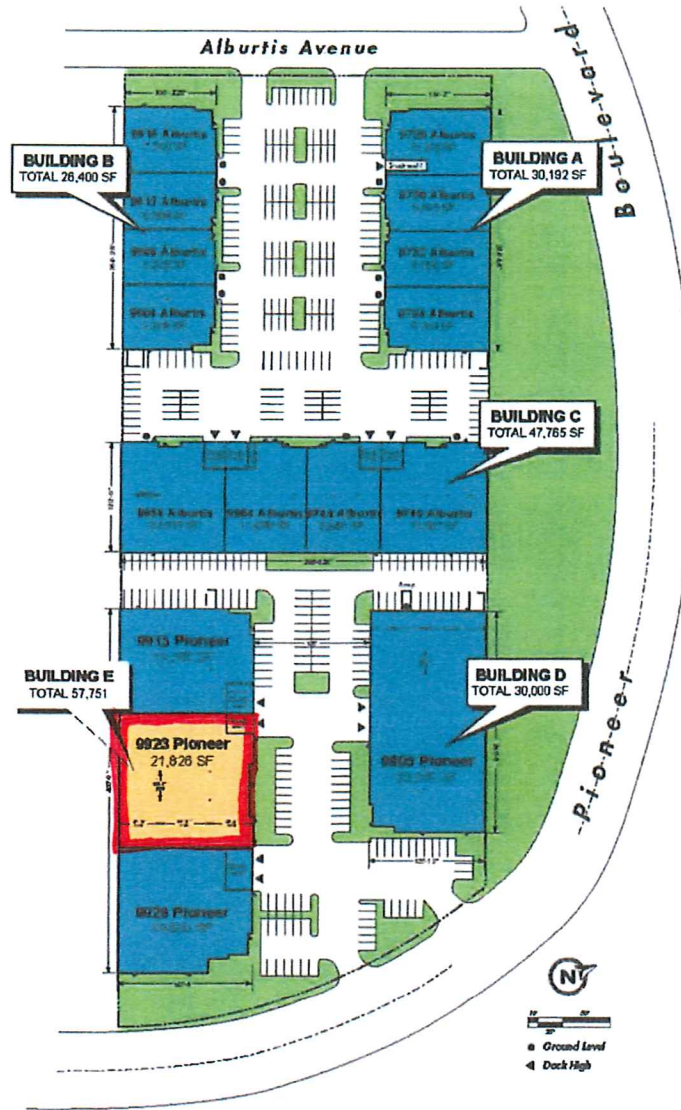


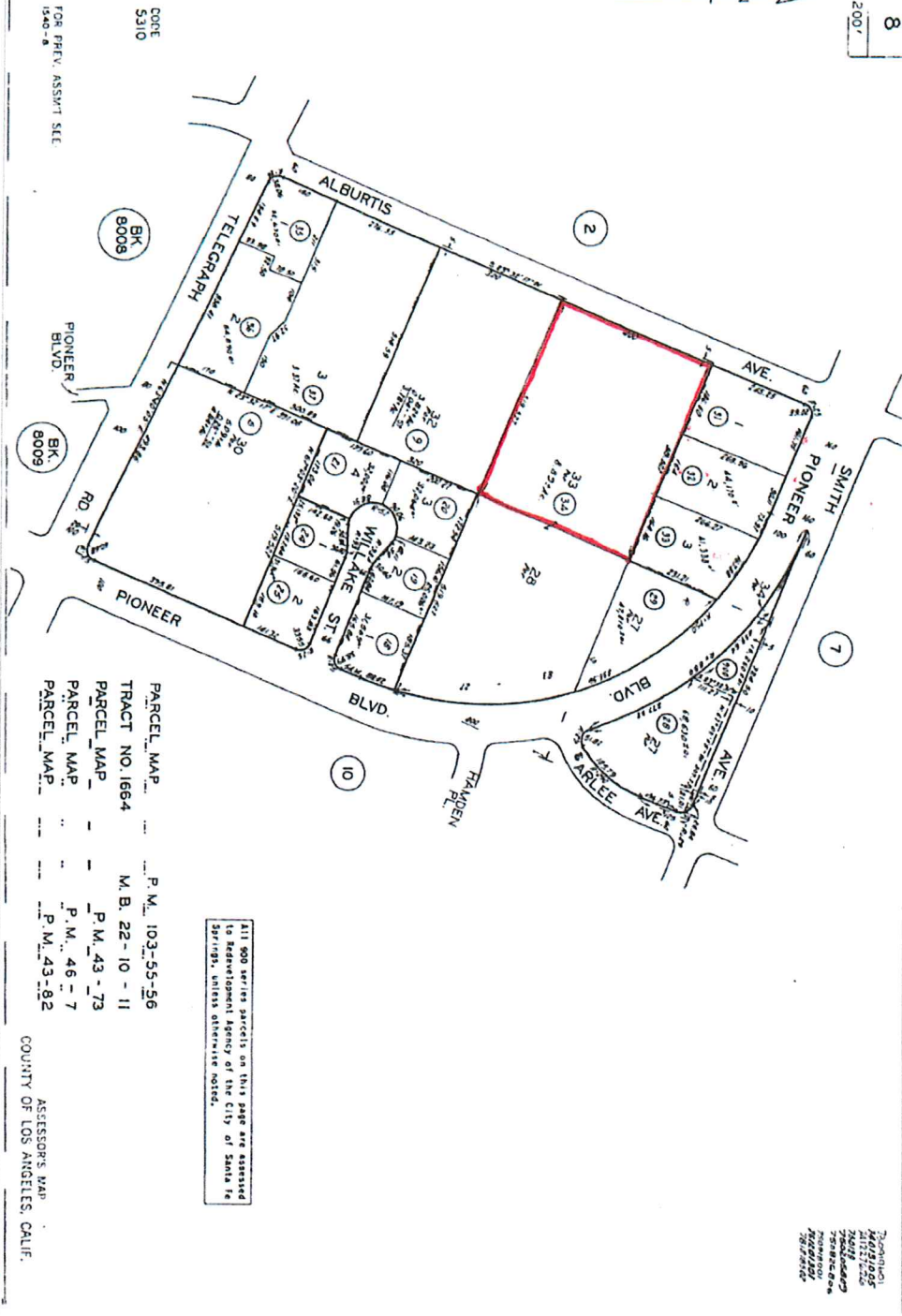
EXHIBIT A

SITE PLAN

ATTACHED TO AND A PART OF THE LEASE AGREEMENT
DATED MARCH 21, 2017, BETWEEN

PROLOGIS TARGETED U.S. LOGISTICS FUND, L.P.
and
TRI-LINK, INC.





All 800 series parcels on this page are assessed to Redevelopment Agency of the City of Santa Fe Springs, unless otherwise noted.

PARCEL MAP ... P.M. 103-55-56
 TRACT NO. 1664 M.B. 22-10-11
 PARCEL MAP ... P.M. 43-73
 PARCEL MAP ... P.M. 46-7
 PARCEL MAP ... P.M. 43-92

ASSESSOR'S MAP
 COUNTY OF LOS ANGELES, CALIF.

CONF 5310
 FOR PREV. ASSWT SEE 1540-8

7/20/2011
 10:21:05
 7/20/2011
 10:21:05
 7/20/2011
 10:21:05

8005 008 034 parcel #