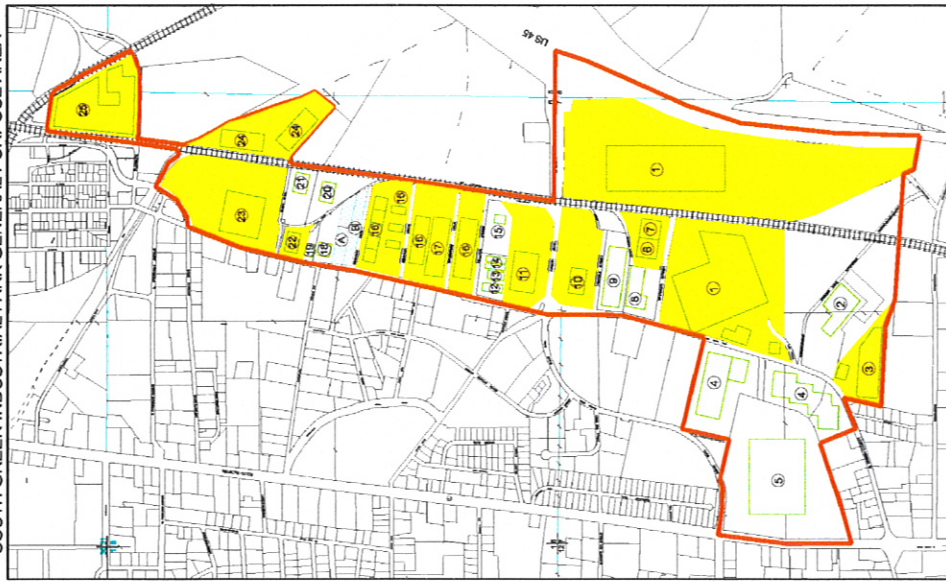


SOUTH GREEN INDUSTRIAL PARK GENERAL PURPOSE AREA

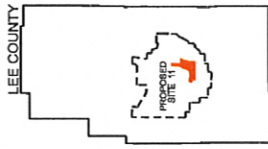


GENERAL PURPOSE ZONE BOUNDARY

EXISTING FACILITIES/ ACREAGE

1. COOPER TIRE/ 147.3 ACRES
2. KRUEGER INTERNATIONAL/ 21.2 ACRES
3. CATALINA LIGHTING/ 4.9 ACRES
4. SUPER SAGLESS CORP./ 28.9 ACRES
5. DELTA INTERNATIONAL MACHINERY/ 40.2 ACRES
6. WAREHOUSE, JOURNAL ENTERPRISES/ 3.1 ACRES
7. GENPAC/ 3.1 ACRES
8. WAREHOUSE, PRESIDENT STREET ENTERPRISE/ 5.1 ACRES
9. MW WINDOWS/ 6.2 ACRES
10. STONE CONTAINER/ 12.6 ACRES
11. GUMTREE FABRICS/ 13.6 ACRES
12. SOUTHERN BATH & KITCHEN/ 1.2 ACRES
13. SOUTHERN PIPE SUPPLY/ 1.2 ACRES
14. ARMSTRONG HEATING PRODUCTS/ 1.2 ACRES
15. ILLINOIS CENTRAL GULF RAILROAD/ 4.1 ACRES
16. WAREHOUSE, JOURNAL ENTERPRISES/ 25.5 ACRES
17. DAILY JOURNAL/ 7.9 ACRES
18. PRECISION MACHINE/ 2.9 ACRES
19. REYNOLD'S HARDWARE/ 1 ACRES
20. C & P WAREHOUSE/ 5.5 ACRES
21. MCH TRANSPORT/ 4.5 ACRES
22. DAYBRITE-CAPRI-OMEGA/ 2.4 ACRES
23. DAYBRITE-CAPRI-OMEGA/ 28.7 ACRES
24. WAREHOUSE, JOURNAL ENTERPRISES/ 14.6 ACRES
25. WAREHOUSE, MIDSOUTH PROPERTIES/ 15.3 ACRES

TOTAL INDUSTRIAL ACREAGE- 397.9 ACRES



LEE COUNTY

AVAILABLE SITES/ ACREAGE

- A. BROOKS PROPERTIES LLC/ 2.5 ACRES
- B. JOURNAL ENTERPRISES/ 2.3 ACRES

TOTAL AVAILABLE ACREAGE- 4.8 ACRES



COMMUNITY DEVELOPMENT FOUNDATION
 3400 N. UNIVERSITY BLVD.
 TULLELA, MISSISSIPPI 39062-1210
 TOLL FREE: 800.233.5463 PHONE: 662.842.4231
 FAX: 662.841.0595 WEBSITE: WWW.CDFMS.ORG



LEE COUNTY
 PROPOSED SITE 11

