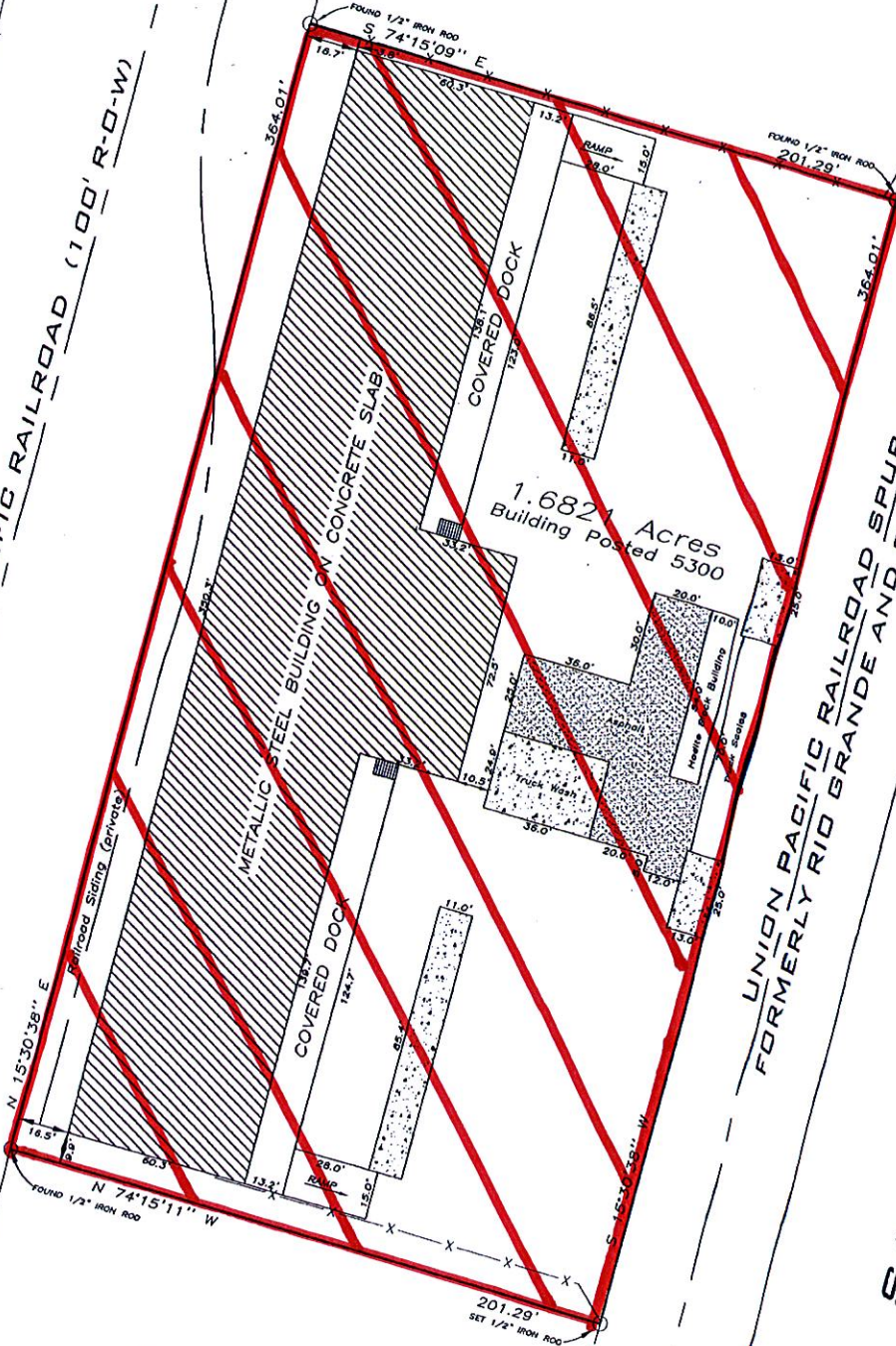


UNION PACIFIC RAILROAD (100' R-O-W)



3.4692 ACRES  
Zuco Minerals and Development  
Vol. 537, Page 165, OPRWCT

1.6821 Acres  
Building Posted 5300

2.00 ACRES  
Vol. 1517, Page 78, OPRWCT

UNION PACIFIC RAILROAD SPUR (50' R-O-W)  
FORMERLY RIO GRANDE AND EAGLE PASS RAILWAY

SANTA MARIA AVENUE

