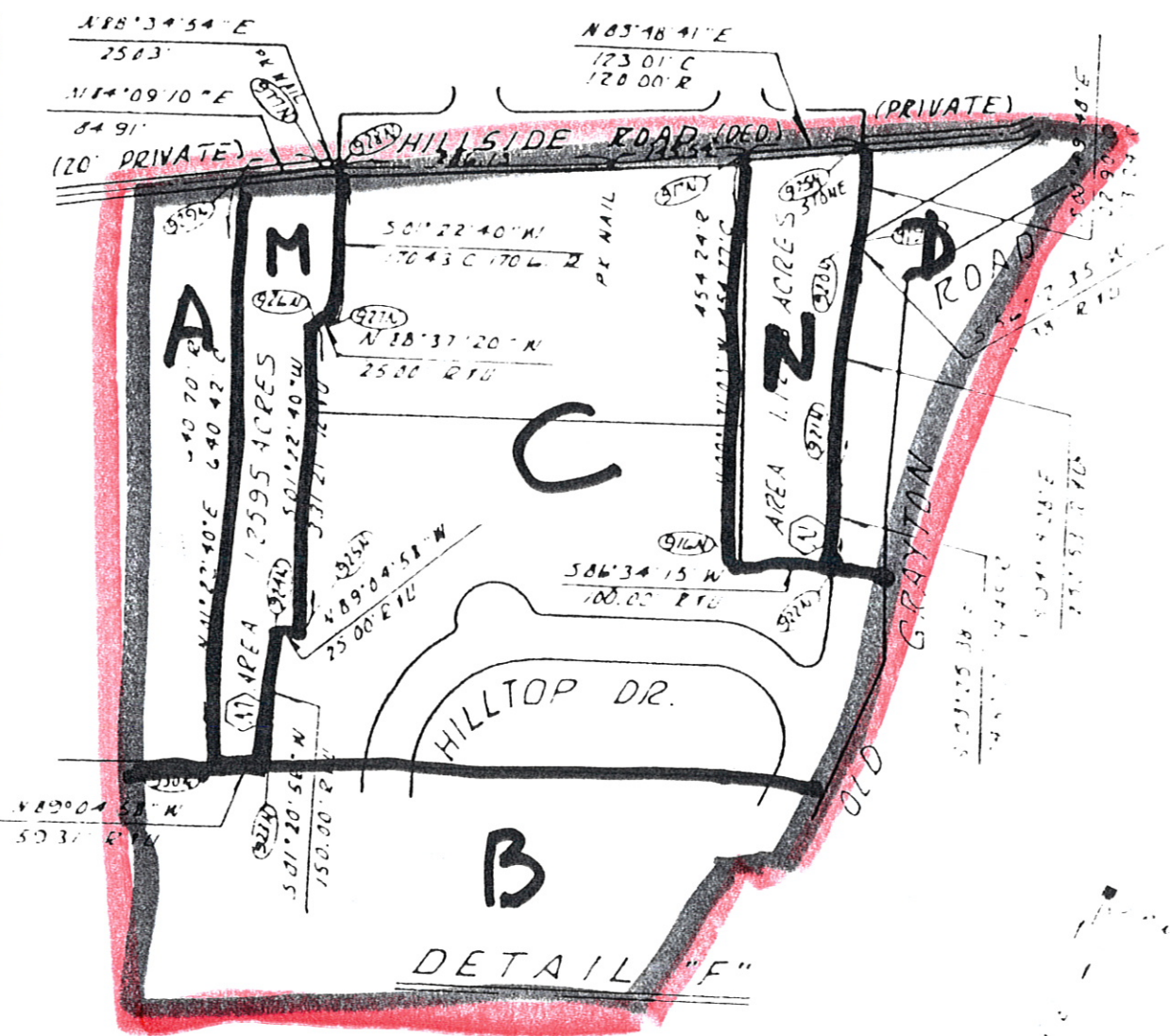


559°53
103 82° C 10°

DETAIL "C"



DETAIL "F"

- FTZ No. 40 SITE 3
DELETED PARCELS**
- A 1.12 acres
 - B 4.60 acres
 - C 9.65 acres
 - D 3.44 acres
 - M 1.26 acres
 - N 1.22 acres
 - TOTAL (21.29 acres)**

⊗ AREA