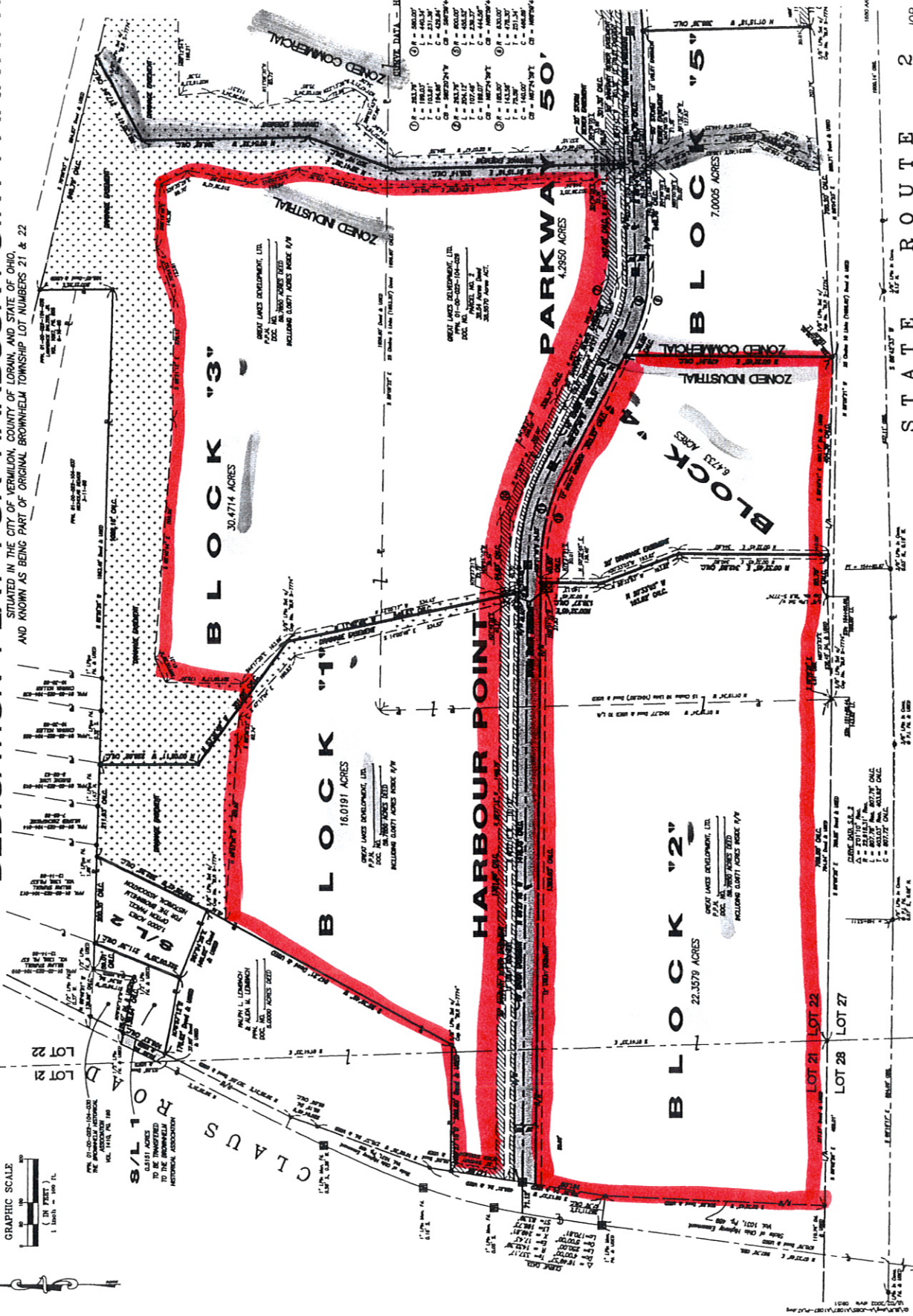


HARBOUR POINT BUSINESS PARK DEDICATION PLAN FOR HARBOUR POINT PARKWAY

SITUATED IN THE CITY OF VERMILION, COUNTY OF LORAIN, AND STATE OF OHIO,
AND KNOWN AS BEING PART OF ORIGINAL BROWNHELM TOWNSHIP LOT NUMBERS 21 & 22



SETBACK DATA - HARBOUR POINT PARKWAY

① R = 262.0'	① R = 262.0'	① R = 262.0'	① R = 262.0'
L = 143.7'	L = 143.7'	L = 143.7'	L = 143.7'
C = 143.7'	C = 143.7'	C = 143.7'	C = 143.7'
② R = 262.0'	② R = 262.0'	② R = 262.0'	② R = 262.0'
L = 143.7'	L = 143.7'	L = 143.7'	L = 143.7'
C = 143.7'	C = 143.7'	C = 143.7'	C = 143.7'
③ R = 262.0'	③ R = 262.0'	③ R = 262.0'	③ R = 262.0'
L = 143.7'	L = 143.7'	L = 143.7'	L = 143.7'
C = 143.7'	C = 143.7'	C = 143.7'	C = 143.7'
④ R = 262.0'	④ R = 262.0'	④ R = 262.0'	④ R = 262.0'
L = 143.7'	L = 143.7'	L = 143.7'	L = 143.7'
C = 143.7'	C = 143.7'	C = 143.7'	C = 143.7'
⑤ R = 262.0'	⑤ R = 262.0'	⑤ R = 262.0'	⑤ R = 262.0'
L = 143.7'	L = 143.7'	L = 143.7'	L = 143.7'
C = 143.7'	C = 143.7'	C = 143.7'	C = 143.7'
⑥ R = 262.0'	⑥ R = 262.0'	⑥ R = 262.0'	⑥ R = 262.0'
L = 143.7'	L = 143.7'	L = 143.7'	L = 143.7'
C = 143.7'	C = 143.7'	C = 143.7'	C = 143.7'
⑦ R = 262.0'	⑦ R = 262.0'	⑦ R = 262.0'	⑦ R = 262.0'
L = 143.7'	L = 143.7'	L = 143.7'	L = 143.7'
C = 143.7'	C = 143.7'	C = 143.7'	C = 143.7'
⑧ R = 262.0'	⑧ R = 262.0'	⑧ R = 262.0'	⑧ R = 262.0'
L = 143.7'	L = 143.7'	L = 143.7'	L = 143.7'
C = 143.7'	C = 143.7'	C = 143.7'	C = 143.7'
⑨ R = 262.0'	⑨ R = 262.0'	⑨ R = 262.0'	⑨ R = 262.0'
L = 143.7'	L = 143.7'	L = 143.7'	L = 143.7'
C = 143.7'	C = 143.7'	C = 143.7'	C = 143.7'
⑩ R = 262.0'	⑩ R = 262.0'	⑩ R = 262.0'	⑩ R = 262.0'
L = 143.7'	L = 143.7'	L = 143.7'	L = 143.7'
C = 143.7'	C = 143.7'	C = 143.7'	C = 143.7'



1000 AUSTIN ROAD, SUITE 100, VERMILION, OHIO 44133
OFFICE: (330) 920-1100 FAX: (330) 920-1101
E-MAIL: INFO@BRBINC.COM